



SPECIFICATION

Recessed Sanitary Napkin Disposal unit shall have a waste capacity of 7 litres for dry/solid waste. Cabinet shall be fabricated of alloy 18-8 stainless steel, grade 304, 18 gauge with a 25mm wide perimeter return to lay flat against wall. Full face door shall be 16 gauge with a 24mm square return to wall at top and bottom and 19mm radius returns to wall on vertical edges with no visible seams. Door shall be attached to the cabinet body with a 5mm diameter stainless steel multi-staked piano hinge and shall be held closed with a tumbler lock keyed alike to other ASI JD MacDonald washroom equipment. Push door shall be hung on a spring loaded solid stainless steel pivot rod and shall have the international graphic symbol for waste on face. Waste bin shall be fabricated of stainless steel and shall be provided with a finger pull for easy servicing and removal. All exposed surfaces of unit shall have a No. 4 satin finish.

INSTALLATION

Mount unit with No. 10 self-tapping screws (supplied by others) through concealed mounting holes provided. For mounting height standards refer to current Building Code of Australia for able bodied and/or disabled use. For general utility unit should be installed in a rough wall opening with its bottom edge 425mm above finished floor. Note that bottom edge of rough wall opening is 19mm above bottom of unit. Rough Wall Opening (RWO) required is 232mm x 460mm x 108mm.

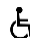
OPERATION

Users push door to deposit waste material. Door is self-closing. Maintenance schedule determines waste removal cycle. Unit is emptied by removing bottom waste bin and inverting over collection bag. Safety finger grip on waste bin provides convenient grip for service. Locked door prevents unauthorized access or removal.

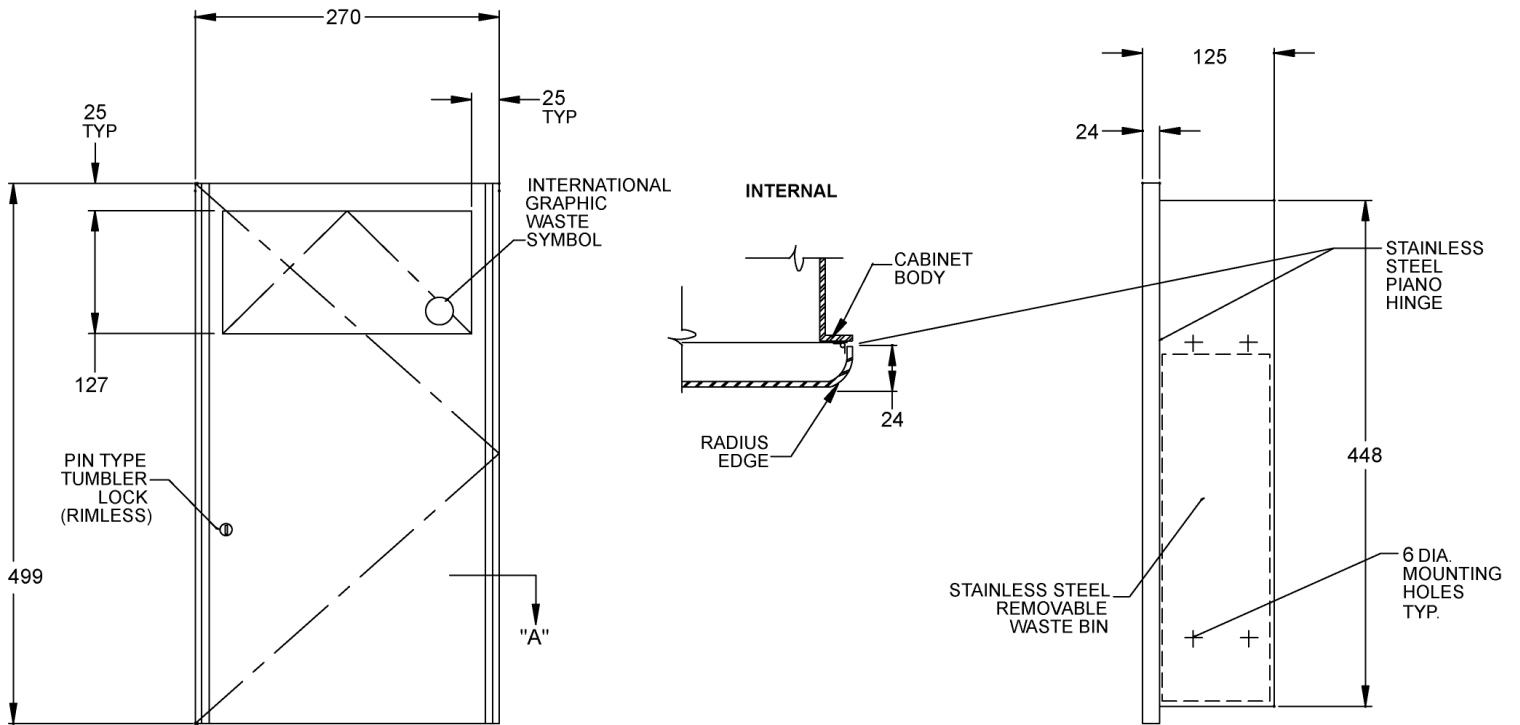
WARRANTY

One year.

Recessed Sanitary Napkin Disposal unit shall be Model No. 10-9471 as supplied by ASI JD MacDonald.

 All ASI JD MacDonald disabled compliant products when installed must be in accordance with AS1428 to ensure the specified product is complying with all washroom specification requirements.

**Recessed
Sanitary Napkin Disposal
Model No. 10-9471**



ASI JD MacDonald reserves the right to, and does from time to time, make changes and improvements in design and dimensions. The photographs and line drawings of the products in this flyer are representational only. All dimensions are in millimetres unless otherwise stated.