



**SPECIFICATION**

Chase Mounted Security Framed Mirror shall have frame of 14 gauge, type 304, alloy 18-8 stainless steel. Structural assembly of frame components shall be of welded construction with six (6) welded on internally threaded posts. All exposed surfaces shall be satin finish. Unit shall be provided with fiberboard backing. Glazing shall be as described in the Glazing Options chart. Mounting hardware shall be sized and supplied as indicated in the installation wall thickness chart.

**INSTALLATION**

Unit is anchored through wall or partition using six (6) ¼-20 threaded rods, washers & nuts (supplied). For proper installation hardware selection specify the wall thickness on which the unit is to be mounted (indicate thickness of wall with check mark ✓ and specify length if over 203mm).

**GLAZING OPTION**

Specify glazing option from chart below by adding code suffix to model number (i.e. 101-14).

| Suffix | Material                          | Finish             | Image Quality |
|--------|-----------------------------------|--------------------|---------------|
| 14     | 20 gauge type 304 stainless steel | No 8 mirror polish | Excellent     |
| 13     | ¼" (6mm)thick tempered glass      | Polished mirror    | Good          |
| 17     | ¼" (6mm) thick Plexiglas          | Polished mirror    | Excellent     |

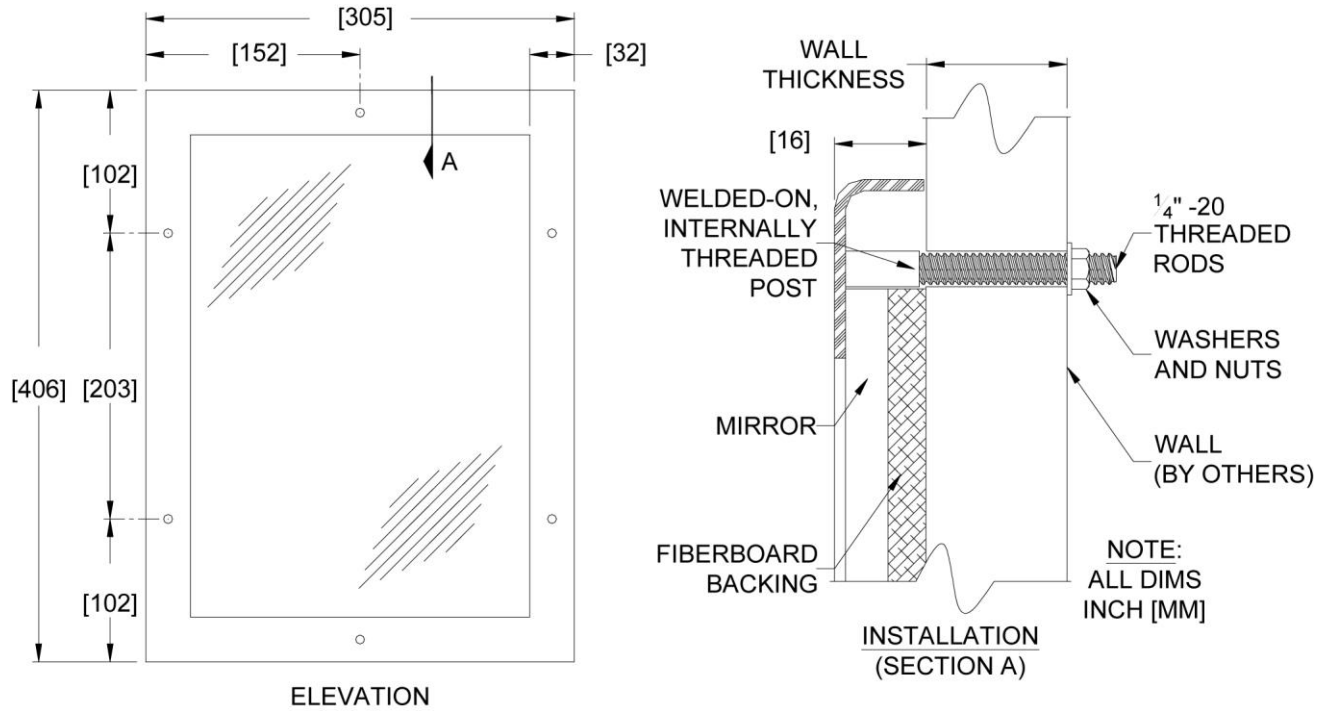
**WARRANTY**

One year.

**Surface Mounted Security Framed Mirror** shall be Model No 10-101-XX as supplied by ASI JD MacDonald.

♿ All ASI JD MacDonald disabled compliant products when installed must be in accordance with AS1428 to ensure the specified product is complying with all washroom specification requirements.

**Surface Mounted Security  
Framed Mirror  
Model No. 10-101**



ASI JD MacDonald reserves the right to, and does from time to time, make changes and improvements in design and dimensions. The photographs and line drawings of the products in this flyer are representational only. All dimensions are in millimetres unless otherwise stated.