

## SPECIFICATION

EZ Fill™ Stand Alone Liquid Soap Dispenser shall hold and dispense 1 L of liquid soap with pH in range  $7 \pm 1.5$  and viscosity in range 100–3800 cP (mPa·s) and shall dispense in stream cycles with volumes of approximately 0.2ml to 2.3ml in four (4) steps programmable by owner with remote control programming unit (optional, Model № 0390-R; supplied one (1) per six (6) pack) with factory pre-set at approximately 0.8ml). Operation is initiated by hands-free sensor controlled by microprocessor digital circuitry and peristaltic pump is powered by an AC Adapter (IP67 rated, provided) plugged into outlet (by others). Unit shall have chrome plated spout and sensor housing with a highly polished finish over all exposed surfaces. Unit shall have LED in sensor to indicate function. A self-adhesive label shall be supplied for use at owner's option to indicate dispenser function. Tank shall be translucent to show quantity of soap remaining at any time. Tank shall be disengaged and engaged into pump/control housing under counter by manually unscrewing to allow refilling and threading back up into pump/control housing to retain for operation. Unit shall mount on vanity top up to 51mm thick through 25 Dia hole min to 32mm Dia max and shall resist forced rotation up to 177 in-lbf (20 Nm) with 0390-ARK properly installed (provided). Owner's Manual and Installation Guide (OM & IG) shall be provided with unit in carton.

## INSTALLATION

Install spout and sensor housing to vanity deck with anti-rotation kit escutcheon flange, rubber washers and basin nut (supplied) through 28.5mm Dia mounting hole and 4mm Dia adjacent hole for anti-rotation pin of escutcheon flange. Mount pump/control housing with bottle support bracket to convenient structure under vanity within 610mm of shank bottom with two (2) screws and wall anchors (supplied). Connect flex tubing from dispenser shank to fitting on top of pump/control module. Connect spout control cable plug into control unit inline cable connector. Mount battery compartment in convenient location under vanity deck with two (2) screws and wall anchors (supplied) within easy reach of extension cable length and plug connector into mating inline power connector. Plug AC Adapter into power outlet located under vanity within 412cm of pump/control housing and plug connector into mating inline power connector. See OM & IG provided in box with unit for complete installation details.

## SOAP REQUIREMENTS

Proper usage of this dispenser requires, that only soap within the following range for viscosity and pH may be used:

- Viscosity Range (mPa·s or cP): 100 – 3800
- pH Range: 5.5 – 8.5

## OPERATION

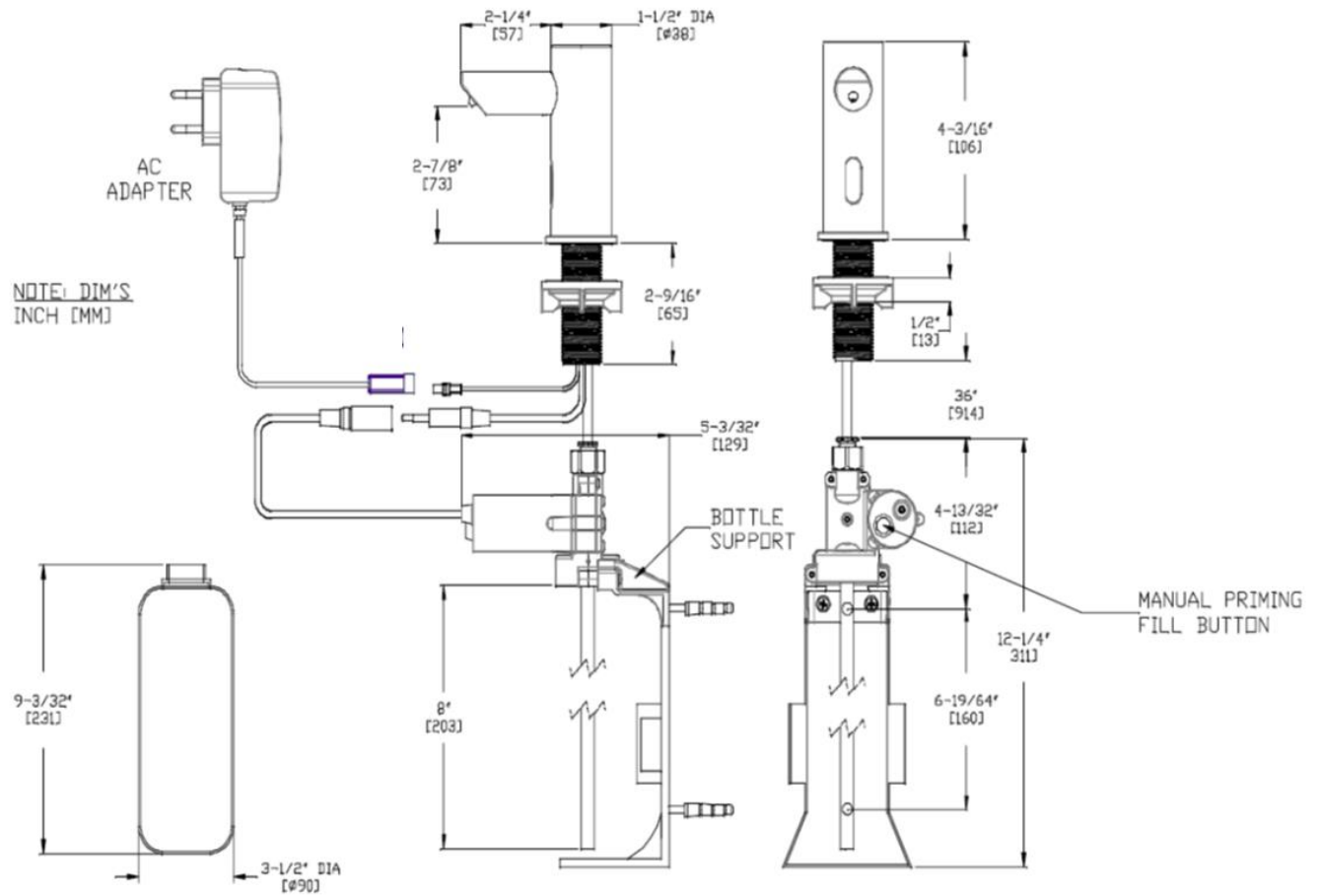
System shall operate each time an object is positioned within the sensing range of 30mm to 100mm  $\pm$  10mm directly in front of the spout of the dispenser. A stream of appropriate viscosity non-abrasive liquid soap drops with total dispense amount of 0.8ml will be pumped from the nozzle during each activation. Optional remote control unit Model № 0390-R (supplied {one (1) per six (6) pack} or order separately) will allow owner programming of alternate dispense amounts and simplify priming when refilling soap container for initial setup and soap-out conditions. See Model № 0390-R Spec Sheet and Owner's Manual for complete description of functions. Unit will dispense soap while AC adapter is connected and correct viscosity soap is present in the tank and system is correctly maintained to enable dispensing (LED is not flashing continuously or does not remain dark when trigger attempt is made). LED will display flash for sensing. Manual priming fill button on pump runs motor (or use 0390-R) for easy soap priming. Soap is manually replenished on service interval determined by maintenance schedule. See OM & IG for complete description of Features and Operations.

## WARRANTY

2 years.

**EZ Fill™ Stand Alone Liquid Soap Dispenser** shall be Model No. 10-0391-3AC as manufactured by ASI JD MacDonald.

# EZ Fill™ Stand Alone Liquid Soap Dispenser Model No. 10-0391-3AC



ASI JD MacDonald reserves the right to, and does from time to time, make changes and improvements in design and dimensions. The photographs and line drawings of the products in this flyer are representational only. All dimensions are in millimetres.