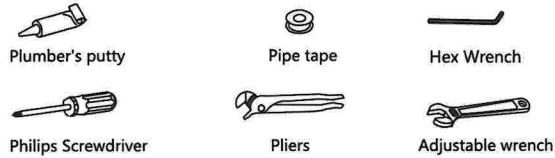


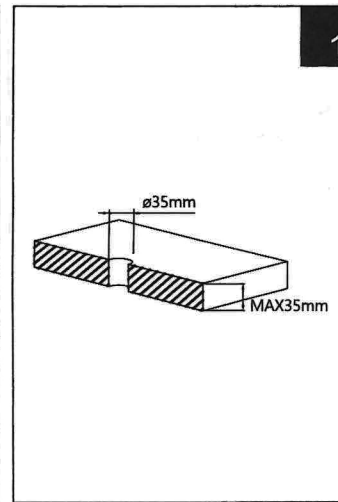
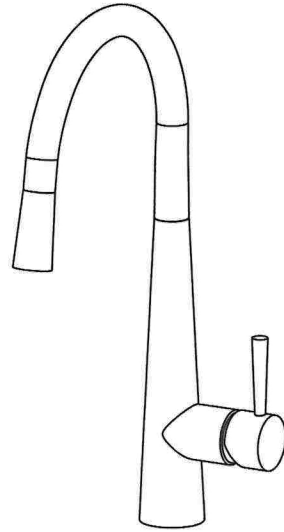
Installation Instructions

Tools Needed:

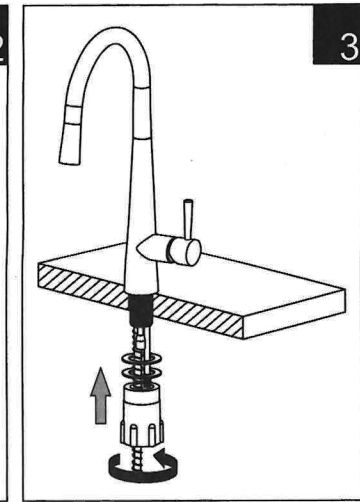
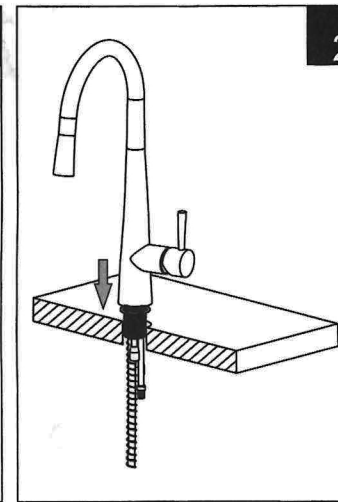


Installation should comply with relevant local authority requirements.

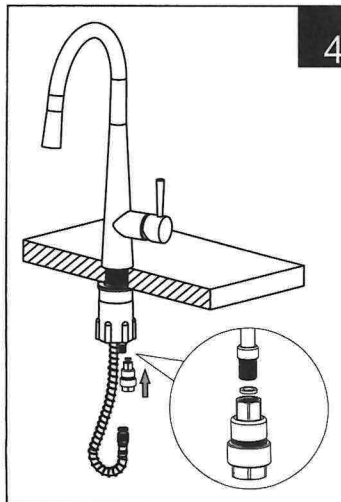
- Maximum hot water temperature 75°C.
- Recommended minimum working pressure 150kpa
- Recommended maximum working pressure 500kpa



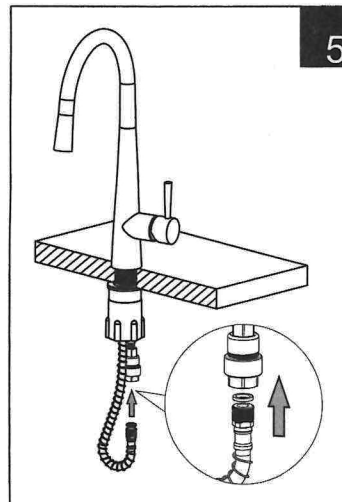
* Make the hole dimension as 35mm.



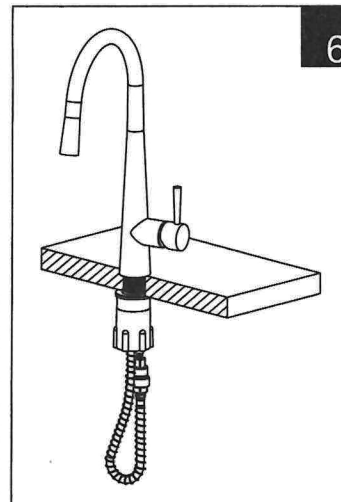
* Place rubber washer and metal fixing, against fixing bolt.
 * Tighten fixing nut.



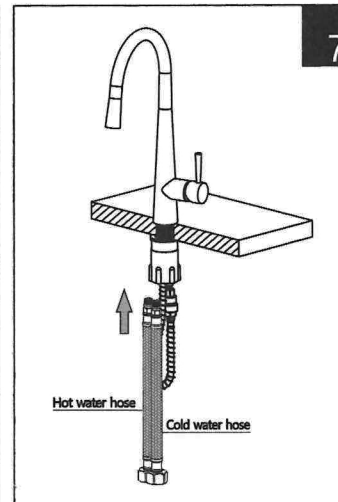
* Put the paper gasket in the check valve on connector. Then screw with fixing bolt.



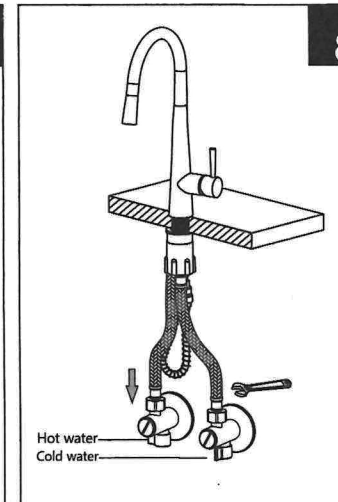
* Put the rubber washer, Screw the extractable hose with the connector.



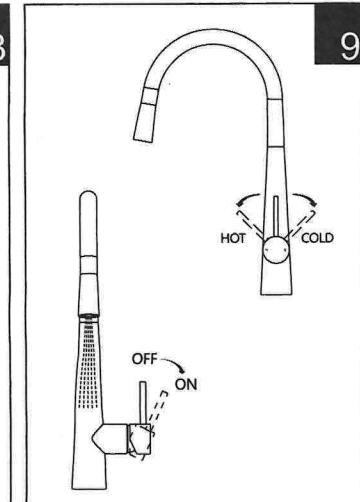
* Pull out the spray head to check the flexible hose can work properly or not.



* Connect hoses to water inlets to Hot & Cold indicators as shown in the figure.



* Attach two flexible hose to water supply.



* Only be cleaned with warm soapy water.
 * cream or acid based cleaning agents be used as these types of cleaners will damage the chrome finish, seals and aerators.