

VERONA Back-to-Wall Freestanding Bath 1500x750x580mm

SPECIFICATIONS

Product Code IVBT-BW-1500MW

Features:

- Designed to be Next to a Wall
- 5mm Sanitary Grade Acrylic
- Matte White Finish with Good Heat Retention
- No Overflow; 40mm Pop-up Waste Included
- Self-supporting Frame and Adjustable Legs

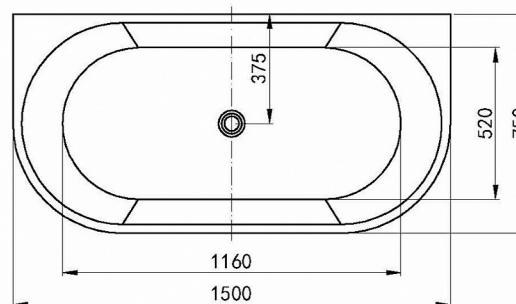
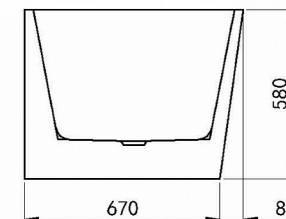
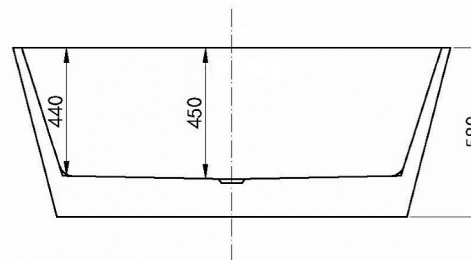
Recommended Part: Bath Flex Hose Connector Flexible Tube (11736)
40x40x88mm

Size: 1500x750x580



While we aim to ensure specifications are correct at the time of publication, Inspirebathware reserves the right to make modifications without prior notice.

All measurements are shown in millimetres. Always use physical product measurements for mark-ups and roughing-in as the technical drawing may differ from actual product received.



SPECIFICATIONS

Bathtub must be installed by licensed plumber in accordance with local regulations and standards.

PACKAGE INFO

Package Size mm			Gross Weight kg
1540	770	630	44