



R&T Alpha Wall Hung Inwall Cistern

Product Code IS21

Dimensions

1140x590x 90-110mm

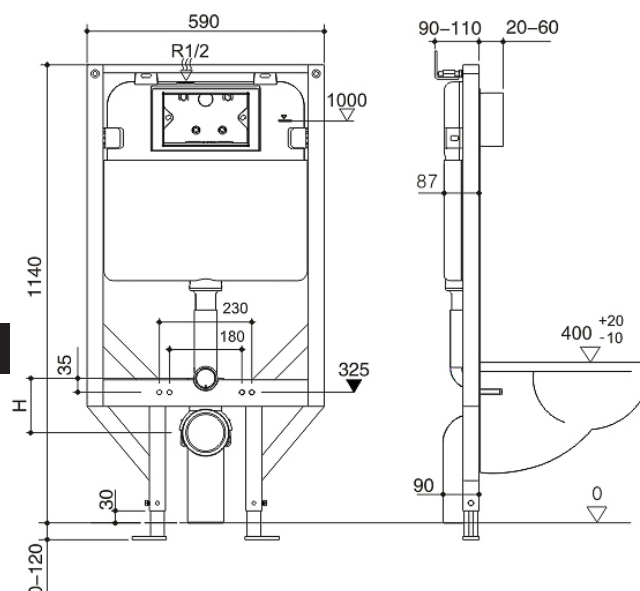
Features

- Suitable for Wall Hung Pan
Includes:- InWall Cistern with Frame
- Push Plate Buttons - Works with Alpha Button selection
- Operating pressure 10-1000kpa
- Fits 90mm stud wall

WELS 4 Star rated
4.7L/3.2L (3.5L average flush)

Warranty

- Domestic -
3 Years Replacement Parts
1 Year Labour for Manufacturing Faults
1 Year Replacement Buttons
Commercial -
1 Years Replacement Parts
1 Year Labour for Manufacturing Faults
1 Year Replacement Buttons



All installations should be carried out by a qualified tradesman in compliance with the National Plumbing & Drainage Code and any State or Local Authority Regulations, in accordance with AS/NZS 3500 series of standards and AS/NZA 6400. All measurements are in millimetres and are subject to change without notice. For ceramic products, please allow +/- 5mm tolerance for manufacturing variance.