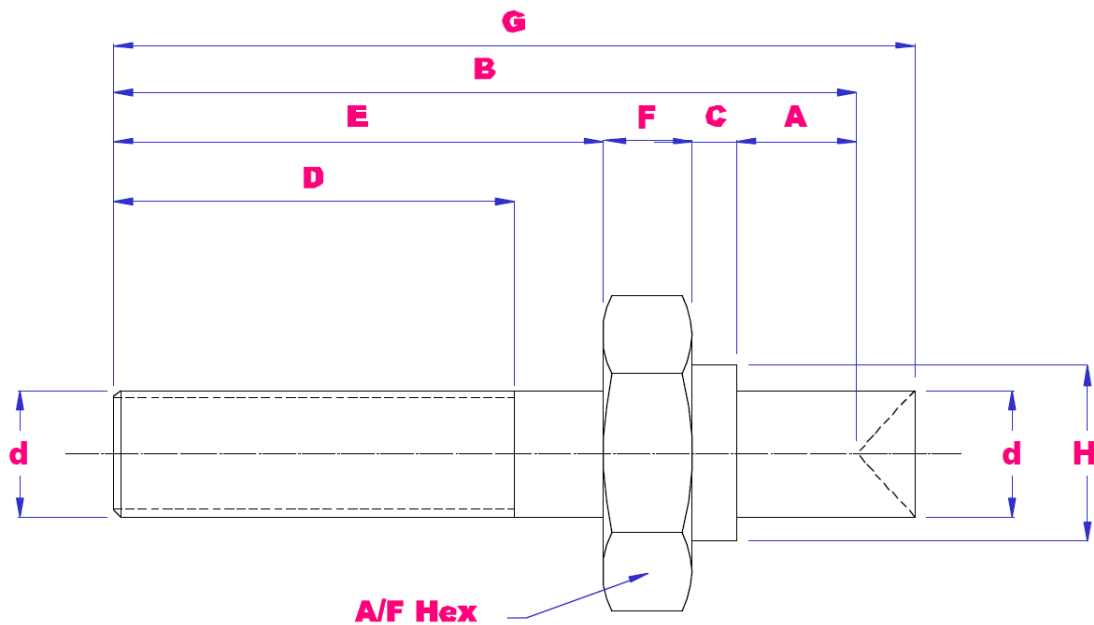
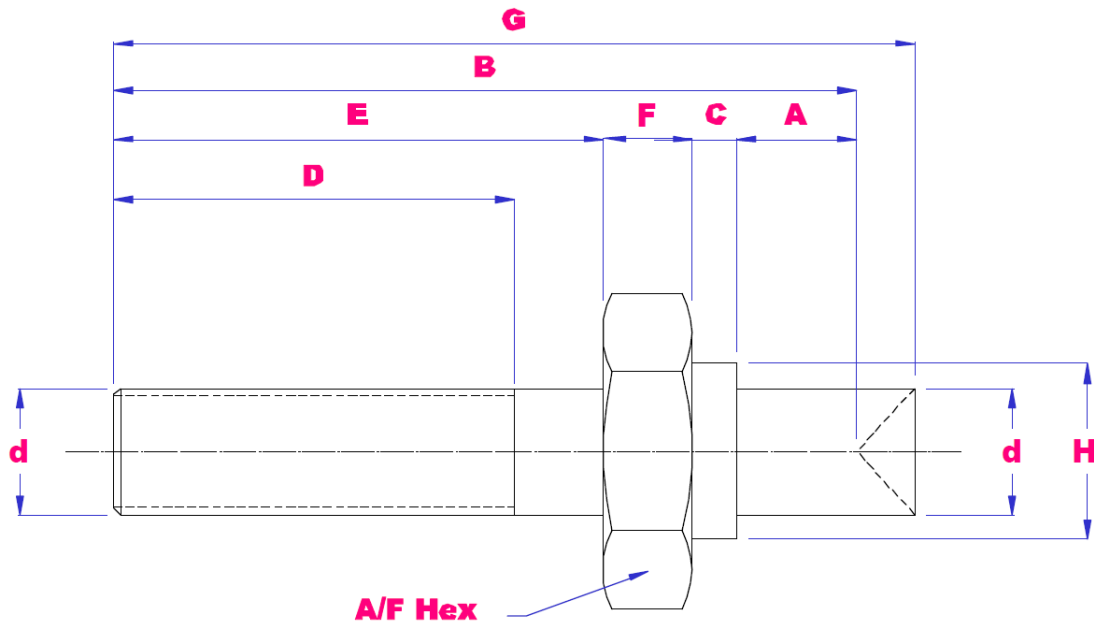


METRIC RODEND INSERTS



PART NO	d	THREAD	A	B	C	D	E	F	G	H	A/F	Wgt (g)
RESM-5	5	M5X0.8	8	30	4	12	13	5	31	8	8	5
RESM-6	6	M6X1	9	37	6	14	16	6	38	10	10	11
RESM-8	8	M8X1.25	12	42	6	16	18	6	44	12	12	18
RESM-10	10	M10X1.5	14	50	7	20	22	7	52	14	14	27
RESM-12	12	M12X1.75	16	61	9	25	28	8	61	16	16	39
RESM-14	14	M14X2	19	65	10	25	28	8	67	18	18	66
RESM-16	16	M16X2	21	81	11	35	40	9	83	20	18	110
RESM-18	18	M18X1.5	23	85	12	35	40	10	87	22	22	172
RESM-20	20	M20X1.5	25	93	12	40	46	10	95	24	24	222

IMPERIAL RODEND INSERTS



PART NO	d	THREAD	A	B	C	D	E	F	G	H	A/F	Wgt (g)
RESI-3/16	0.1875	10-32	0.312	30	4	12	13	5	31	8	8	5
RESI-1/4	0.25	1/8-28	0.375	37	6	14	16	6	38	10	10	11
RESI-5-16	0.3125	5/16-24	0.437	42	6	16	18	6	44	12	12	18
RESI-3/8	0.375	3/8-24	0.50	50	7	20	22	7	52	14	14	26
RESI-7/16	0.4375	7/16-20	0.562	61	9	25	28	8	61	16	16	41
RESI-1/2	0.50	1/2-20	0.625	61	9	25	28	8	61	16	16	50
RESI-5/8	0.625	5/8-18	0.75	81	11	35	40	9	83	20	18	113
RESI-3/4	0.75	3/4-16	0.875	93	12	40	46	10	95	24	24	208
RESI-1	1.00	1-1/2	1.375	125	16	50	60	14	128	30	30	336