

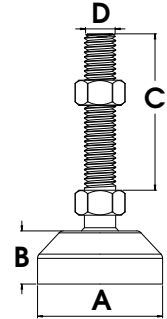
Levelling Feet

FIXED - RUBBER & STEEL BASE



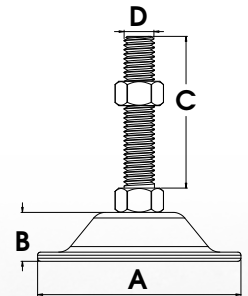
FIXED - RUBBER BASE

Part Number	Size	Base Diameter (A)	Base Height (B)	Thread Length (C)	Thread (D)	Load Capacity
LVR118	60 x M10	60mm	25mm	50mm	M10	500kg
LVR119	60 x M10	60mm	25mm	100mm	M10	500kg
LVR121	60 x M12	60mm	25mm	100mm	M12	500kg
LVR123	70 x M16	70mm	30mm	150mm	M16	500kg
LVR125	70 x M20	70mm	30mm	150mm	M20	500kg



FIXED - STEEL BASE

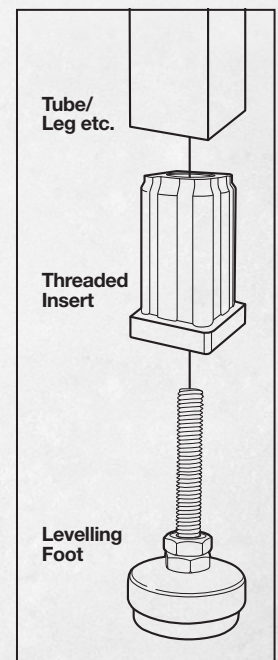
Part Number	Size	Base Diameter (A)	Base Height (B)	Thread Length (C)	Thread (D)	Load Capacity
LVR088	38 x M8	38mm	11mm	50mm	M8	150kg
LVR089	38 x M8	38mm	11mm	100mm	M8	150kg
LVR090	38 x M10	38mm	11mm	50mm	M10	150kg
LVR093	60 x M10	60mm	11mm	100mm	M10	300kg
LVR095	60 x M12	60mm	11mm	100mm	M12	300kg
LVR096	80 x M16	80mm	13mm	100mm	M16	500kg
LVR098	80 x M20	80mm	13mm	100mm	M20	500kg
LVR101	100 x M20	100mm	20mm	150mm	M20	700kg



**Fixed Foot
Rubber Base**
LVR118



**Fixed Foot
Steel Base**
LVR095



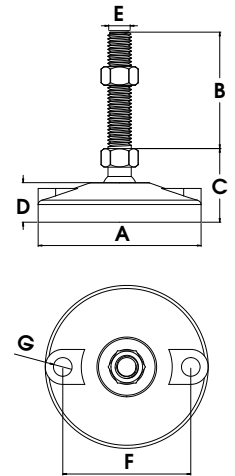
Levelling Feet

BOLT DOWN & FIXED - RUBBER BASE



BOLT DOWN

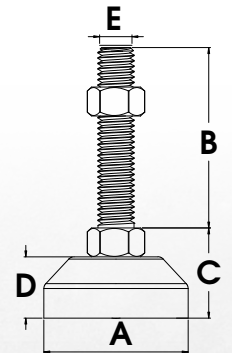
Part Number	Size	Base Diameter (A)	Thread Height (B)	Base Thread Height (C)	Base Height (D)	Thread (E)	Hole Centres (F)	Hole Diameter (G)	Load Capacity
LVR8008100B	80 x M8	80mm	100mm	35mm	18mm	M8	56mm	10mm	350kg
LVR8010100B	80 x M10	80mm	100mm	32mm	18mm	M10	56mm	10mm	500kg
LVR8012100B*	80 x M12	80mm	100mm	33mm	18mm	M12	56mm	10mm	800kg
LVR8012150B	80 x M12	80mm	150mm	35mm	18mm	M12	56mm	10mm	800kg
LVR10012100B	100 x M12	100mm	100mm	41mm	29mm	M12	73mm	13mm	800kg
LVR10012150B	100 x M12	100mm	150mm	44mm	29mm	M12	73mm	13mm	800kg
LVR10016150B	100 x M16	100mm	150mm	45mm	28mm	M16	73mm	13mm	1000kg
LVR12716150B	127 x M16	127mm	150mm	47mm	29mm	M16	102mm	13mm	1000kg
LVR12720150B	127 x M20	127mm	150mm	47mm	30mm	M20	102mm	13mm	1000kg



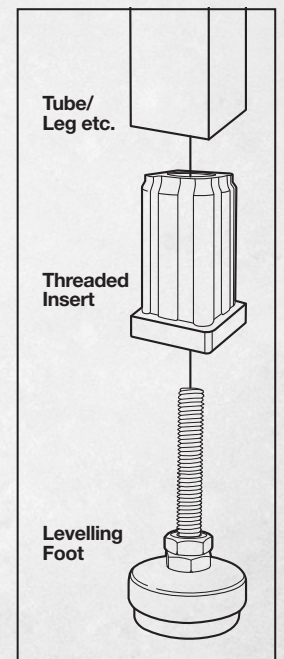
For stainless steel option add SS to the part number, eg. LVR8008100BSS. Models marked * not available in stainless steel

FIXED

Part Number	Size	Base Diameter (A)	Thread Height (B)	Base Thread Height (C)	Base Height (D)	Thread (E)	Load Capacity
LVR500850F	50 x M8	50mm	50mm	31mm	23mm	M8	350kg
LVR501050F	50 x M10	50mm	50mm	31mm	23mm	M10	500kg
LVR601250F	60 x M12	60mm	50mm	33mm	25mm	M12	800kg
LVR6012100F	60 x M12	60mm	100mm	33mm	25mm	M12	800kg
LVR6016150F	60 x M16	60mm	150mm	35mm	25mm	M16	1000kg
LVR6020150F	60 x M20	60mm	150mm	35mm	25mm	M20	1000kg
LVR8012100F*	80 x M12	80mm	100mm	40mm	30mm	M12	500kg
LVR8012150F	80 x M12	80mm	150mm	40mm	30mm	M12	500kg
LVR8016150F*	80 x M16	80mm	150mm	40mm	30mm	M16	800kg
LVR8020150F	80 x M20	80mm	150mm	40mm	30mm	M20	1000kg



For stainless steel option add SS to the part number, eg. LVR500850FSS. Models marked * not available in stainless steel



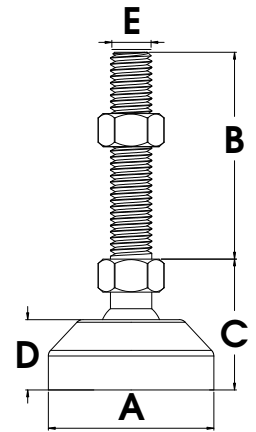
Levelling Feet

BALL JOINTED - RUBBER BASE



BALL JOINTED

Part Number	Size	Base Diameter (A)	Thread Height (B)	Base Thread Height (C)	Base Height (D)	Thread (E)	Load Capacity
LVR400850S	40 x M8	40mm	50mm	30mm	17mm	M8	350kg
LVR4008100S	40 x M8	40mm	100mm	33mm	17mm	M8	350kg
LVR401050S	40 x M10	40mm	50mm	30mm	16mm	M10	500kg
LVR4010100S	40 x M10	40mm	100mm	32mm	18mm	M10	500kg
LVR600850S	60 x M8	60mm	50mm	36mm	24mm	M8	350kg
LVR601050S	60 x M10	60mm	50mm	36mm	24mm	M10	500kg
LVR6010100S	60 x M10	60mm	100mm	38mm	24mm	M10	500kg
LVR601250S	60 x M12	60mm	50mm	36mm	24mm	M12	800kg
LVR6012100S	60 x M12	60mm	100mm	36mm	24mm	M12	800kg
LVR801250S	80 x M12	80mm	50mm	36mm	24mm	M12	800kg
LVR8012100S	80 x M12	80mm	100mm	36mm	24mm	M12	800kg
LVR8016100S	80 x M16	80mm	100mm	38mm	23mm	M16	1000kg
LVR8016150S	80 x M16	80mm	150mm	38mm	24mm	M16	1000kg
LVR8020100S	80 x M20	80mm	100mm	42mm	23mm	M20	1000kg
LVR8020150S	80 x M20	80mm	150mm	42mm	24mm	M20	1000kg



For stainless steel option add SS to the part number, eg. LVR400850SSS



Ball Jointed Foot

LVR400850S



Ball Jointed Foot

LVR6010100S



Ball Jointed Foot

LVR8020150S

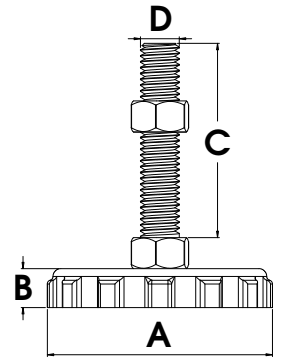
Levelling Feet

FIXED - NYLON & NYLON CONE



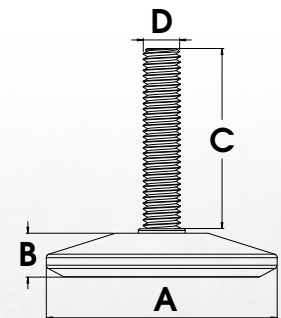
FIXED - NYLON KNOB

Part Number	Size	Base Diameter (A)	Base Height (B)	Thread Length (C)	Thread (D)	Load Capacity
LVR057	25 x M8	25mm	10mm	50mm	M8	100kg
LVR059	38 x M8	38mm	10mm	50mm	M8	200kg
LVR060	38 x M10	38mm	10mm	50mm	M10	200kg
LVR062	50 x M10	50mm	10mm	50mm	M10	300kg
LVR063	50 x M10	50mm	10mm	100mm	M10	300kg
LVR064	50 x M12	50mm	10mm	50mm	M12	300kg
LVR065	50 x M12	50mm	10mm	100mm	M12	300kg
LVR066	63 x M10	63mm	10mm	30mm	M10	500kg
LVR067	63 x M10	63mm	10mm	100mm	M10	500kg
LVR068	63 x M12	63mm	10mm	50mm	M12	500kg
LVR069	63 x M12	63mm	10mm	100mm	M12	500kg



FIXED - NYLON CONE

Part Number	Size	Base Diameter (A)	Base Height (B)	Thread Length (C)	Thread (D)	Load Capacity
LVR051	40 x M8	40mm	13mm	50mm	M8	100kg
LVR052	50 x M10	50mm	13mm	50mm	M10	150kg
LVR053	60 x M12	60mm	13mm	50mm	M12	200kg



Fixed Nylon Knob Foot
LVR057



Fixed Nylon Cone Foot
LVR051

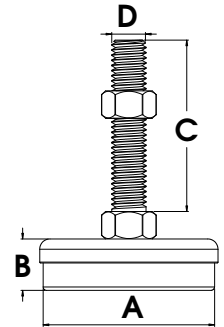
Levelling Feet

FIXED - STEEL/RUBBER & STEEL/NYLON



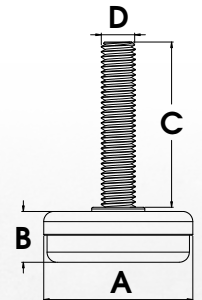
FIXED - STEEL/RUBBER

Part Number	Size	Base Diameter (A)	Base Height (B)	Thread Length (C)	Thread (D)	Load Capacity
LVR074	30 x M6	30mm	15mm	50mm	M6	200kg
LVR075	30 x M8	30mm	15mm	50mm	M8	200kg
LVR076	40 x M8	40mm	17mm	50mm	M8	300kg
LVR078	40 x M10	40mm	17mm	50mm	M10	300kg
LVR080	50 x M10	50mm	17mm	50mm	M10	450kg
LVR082	50 x M12	50mm	17mm	50mm	M12	450kg
LVR085	60 x M10	60mm	20mm	100mm	M10	600kg
LVR087	60 x M12	60mm	20mm	100mm	M12	600kg



FIXED- STEEL/NYLON

Part Number	Size	Base Diameter (A)	Base Height (B)	Thread Length (C)	Thread (D)	Load Capacity
LVR069A	25 x M6	25mm	10mm	25mm	M6	200kg
LVR070	25 x M8	25mm	10mm	25mm	M8	200kg
LVR071	35 x M8	35mm	12mm	25mm	M8	300kg
LVR072	35 x M10	35mm	12mm	45mm	M10	350kg
LVR073A	40 x M10	40mm	14mm	45mm	M10	500kg
LVR073	40 x M10	40mm	14mm	25mm	M10	500kg



**Fixed Steel/
Rubber Foot**
LVR082



**Fixed Steel/
Nylon Foot**
LVR070