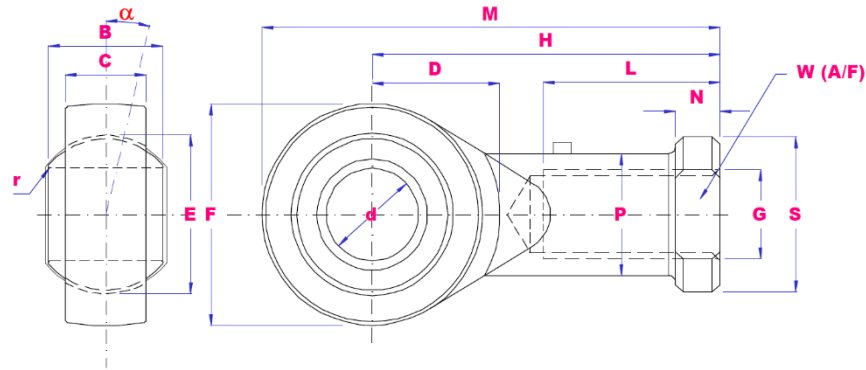


# FEMALE RODENDS

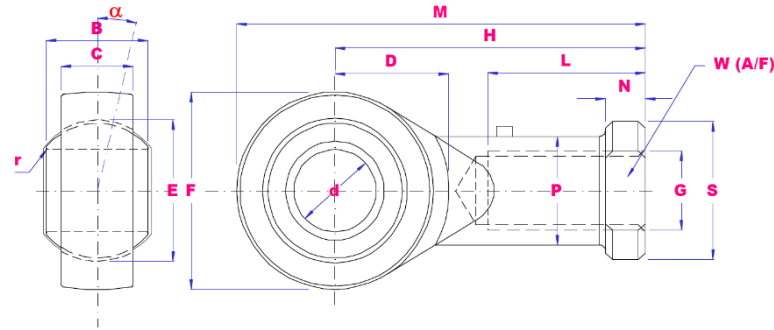


## METRIC RODENDS

PART NO	d	B	E	C	F	G	H	L	M	N	D	W	P	S	r	α deg	Load kN		Wgt (g)
																	Dyn	Stat	
KF5MM	5	8	11.1	6	16	M5X0.8	27	14	35	4	8	9	9	11	0.3	13	3.3	4.1	16
KF6MM	6	9	12.7	6.75	18	M6X1	30	14	39	5	9	11	10	13	0.3	13	4.3	5.3	26
KF8MM	8	12	15.9	9	22	M8X1.25	36	17	47	5	11	14	12.5	16	0.3	14	6.8	8.5	44
KF10MM	10	14	19	10.5	26	M10X1.5	43	21	56	6.5	13	17	15	19	0.3	14	10	11	72
KF10MM X1.25MM	10	14	19	10.5	26	M10X1.25	43	21	56	6.5	13	17	15	19	0.3	14	10	11	72
KF12MM	12	16	22.2	12	30	M12X1.75	50	24	65	6.5	15	19	17.5	22	0.3	13	13	14	108
KF12MM X1.25MM	12	16	22.2	12	30	M12X1.25	50	24	65	6.5	15	19	17.5	22	0.3	13	13	14	108
KF14MM	14	19	25.4	13.5	34	M14X2	57	27	74	8	16	22	20	25	0.3	16	17	20	161
KF14MM X1.5MM	14	19	25.4	13.5	34	M14X1.5	57	27	74	8	16	22	20	25	0.3	16	17	20	161
KF16MM	16	21	28.6	15	38	M16X2	64	33	83	8	17.5	22	22	27	0.3	15	21	25	225
KF16MM X1.5MM	16	21	28.6	15	38	M16X1.5	64	33	83	8	17.5	22	22	27	0.3	15	21	25	225
KF18MM	18	23	31.8	16.5	42	M18X1.5	71	36	92	10	19.5	27	25	31	0.6	15	26	30	295
KF20MM	20	25	34.9	18	46	M20X1.5	77	40	100	10	21.5	30	27.5	34	0.6	15	31	35	382
KF22MM	22	28	38.1	20	50	M22X1.5	84	43	109	12	23	32	30	37	0.6	15	38	43	488
KF25MM	25	31	42.8	22	60	M24X2	94	48	124	12	29.5	36	33.5	42	0.6	15	47	65	749
KF28MM	28	35	47.6	25	66	M27X2	103	53	136	12	32.5	41	37	46	0.6	15	59	77	949
KF30MM	30	37	50.8	25	70	M30X2	110	56	145	15	34	41	40	50	0.6	17	63	86	1130

FOR CORRESPONDING RODEND WITH LEFT HAND THREAD, USE PART NO KFLMM

## IMPERIAL RODENDS



PART NO	d	B	E	C	F	G	H	L	M	N	D	W	P	S	r	α deg	Load kN		Wgt (g)
																	Dyn	Stat	
VF3	4.83	7.92	11.1	6.35	15.9	10-32	26.97	14.27	34.93	4.75	9	7.92	7.54	10.31	0.3	10	3.4	4.6	15
	0.187	0.31	0.44	0.25	0.63		1.062	0.562	1.375	0.187	0.354	0.312	0.297	0.406	0.012				
VF4	6.35	9.53	12.7	7.14	19.1	1/4-28	33.32	19.05	42.85	4.75	10.5	9.53	9.15	11.91	0.3	13	4.5	7.7	25
	0.25	0.38	0.5	0.28	0.75		1.312	0.75	1.687	0.187	0.413	0.375	0.36	0.496	0.012				
VF5	7.94	11.1	15.9	8.74	22.2	5/16-24	34.93	19.05	46.02	4.75	11.7	11.11	10.72	12.7	0.3	10	6.9	8.4	36
	0.312	0.44	0.63	0.34	0.88		1.375	0.75	1.812	0.187	0.461	0.437	0.422	0.50	0.012				
VF6	9.53	12.7	18.3	10.3	25.4	3/8-24	41.28	23.80	53.98	6.35	12.3	14.27	13.89	17.45	0.6	9	9.4	10	61
	0.375	0.5	0.72	0.41	1		1.625	0.937	2.125	0.25	0.484	0.562	0.547	0.687	0.024				
VF7	11.11	14.3	20.6	11.1	28.6	7/16-20	46.02	26.97	60.33	6.35	14	15.88	15.49	19.05	0.6	11	11	13	81
	0.437	0.56	0.81	0.44	1.13		1.812	1.062	2.375	0.25	0.551	0.625	0.61	0.75	0.024				
VF8	12.7	15.9	23.8	12.7	33.3	1/2-20	53.98	30.15	70.64	6.35	16.2	19.05	18.67	22.23	0.6	9	15	19	133
	0.5	0.63	0.94	0.5	1.31		2.125	1.187	2.781	0.25	0.638	0.75	0.735	0.875	0.024				
VF10	15.88	19.1	28.6	14.3	38.1	5/8-18	63.5	38.10	82.55	7.92	18.2	22.23	21.84	25.4	0.6	11	20	21	190
	0.625	0.75	1.13	0.56	1.5		2.5	1.50	3.25	0.312	0.717	0.875	0.86	1.00	0.024				
VF12	19.05	22.2	33.3	17.5	44.5	3/4-16	73.03	44.45	95.25	7.92	20.9	25.4	25.05	28.58	0.6	10	29	29	285
	0.75	0.88	1.31	0.69	1.75		2.875	1.75	3.75	0.312	0.823	1.00	0.985	1.125	0.024				
VF16	25.4	34.9	47.6	25.4	69.9	1.1/4-12	104.8	53.98	139.7	11.11	33.1	38.1	37.72	44.45	0.6	14	60	101	1000
	1	1.38	1.88	1	2.75		4.125	2.125	5.50	0.437	1.303	1.50	1.485	1.75	0.024				

**FOR CORRESPONDING RODEND WITH LEFT HAND THREAD, USE PART NO VFL**