

FASTAID DEFIBRILLATOR CPR WALL CHART



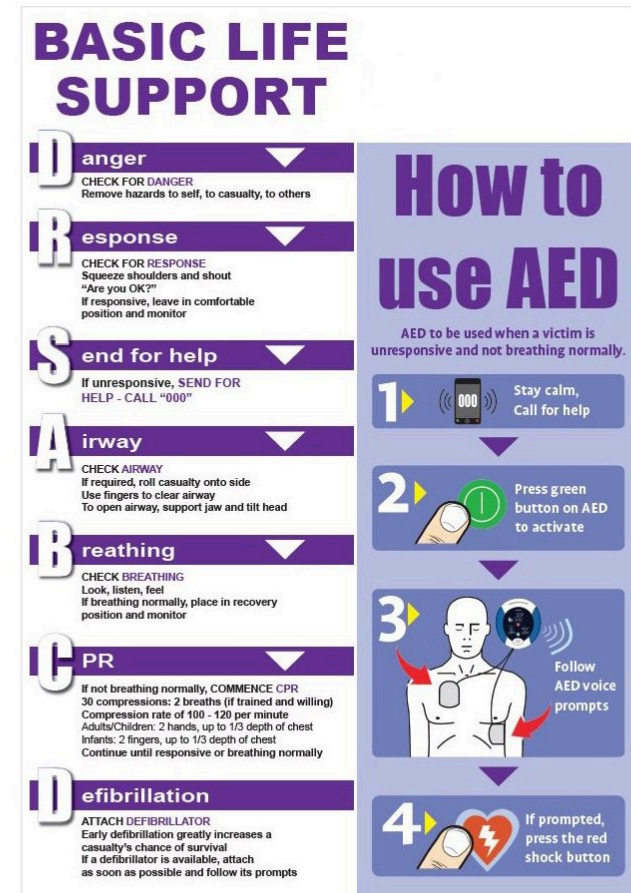
Description

- DRSABCD flow chart
- Generic defibrillator instructions
- ANZCOR approved
- Gloss card material
- Easily wall mountable

The FastAid Defibrillator CPR Wall Chart contains essential DRSABCD and defibrillator guidelines for installation beside a defibrillator.

Printed on a gloss A3 card material this signage is ANZCOR approved and is easily wall mountable.

Dimensions: 29.7 (W) x 42 (H) cm



Scan to view
product page
and downloads



FASTAID DEFIBRILLATOR CPR WALL CHART



Specifications

GENERAL	
Code	RD5300
Weblink	https://fastaid.com.au/products/rd5300
Colour	N/A
Minimum Order Quantity	
Warranty	
Attracts GST	Yes
Batch Tracked	No
Expiry Tracked	No
Serial Tracked	No
COMPLIANCE	
TGA Registered No.	
ISO9001 Certified	No
WHS Workplace Compliant	No
Main Material Product	
Timber or Pulp	No
Type of Wood	
Dangerous Goods	No
HS (Tariff) Code	
UNSPSC Code	
Country of Origin	
EACH (EA)	
Product Dimensions	29.7 (W) x 42 (H) x 0.1 (D) cm
Dimensions (w/ Packaging)	
Cubic	
Product Weight	
Weight (w/ Packaging)	
Packaging Weight	
Packaging Material	
Recycled Packaging Content %	
Barcode	

INNER (INR)	
Dimensions	
Cubic	
Weight (w/ Packaging)	
Packaging Weight	
Packaging Material	
Recycled Packaging Content %	
Barcode	
CARTON (CTN)	
Dimensions	
Cubic	
Weight (w/ Packaging)	
Packaging Weight	
Packaging Material	
Recycled Packaging Content %	
Barcode	
PALLET (PLT)	
Qty per Pallet	
Cartons per Layer	
Layers per Pallet	
Weight (w/ Packaging & Pallet)	