

#### Description

Model 680AN is a heavy duty air operated grease gun designed and engineered for 450gm grease cartridges or bulk grease. German made, the 680AN provides the user with the flexibility of a continuous flow of grease or one shot trigger action. The gun comes complete with separate filler nipple, a separate bleeder valve and a 50cm long high pressure flexible extension and hydraulic coupler. (480AN 400gm model also available).

#### Specifications

Uses	Air Operated Grease Gun - 450gm grease cartridge fill or bulk grease fill. Suitable for most greases up to NLGI2.
Discharge Quantity	Continuous Flow: 100gm per minute (without counter pressure)
Grease Pressure	40:1 ratio. Maximum operating pressure 3,920psi.
Air Pressure	Min: 40psi / Max: 100psi. Recommended operating pressure 85psi.
Air consumption	6 Litres per minute
Weight	1.65kg

#### Operating Instructions

1. Before connecting the gun to the compressed air, check if the barrel is filled with grease. There are two ways to fill the gun with grease:

##### A) 450gm Grease Cartridge:

Unscrew the grease barrel from the gun and insert the 450gm grease cartridge by holding the barrel assembly & pulling the rod back. Remove both caps from the cartridge, insert the cartridge into the barrel & then re screw the barrel assembly back onto the gun so that the cartridge sits well against the grease gun head. Once in position, press the clamp down & push the rod back into the barrel.

##### Important to Note

When using the gun with a cartridge, the follower cup must be folded backwards. The gun is supplied standard with the follower cup in this position.

##### B) Bulk Grease Loading:

Unscrew the grease barrel from the gun & insert the barrel into the bulk grease. Suck the grease up into the barrel by pulling the rod all the way back. When barrel is full with grease, re screw the barrel assembly back onto the gun so that the grease filter sits well against the grease. Press the clamp down & push the rod back into the barrel.

##### Important to note:

When using the gun with bulk grease, the follower cup must be folded forward. To do this you have to take the follower cup and rod assembly out of the barrel, fold the follower cup forward and reassemble the barrel assembly.

2. Connect the gun to the air compressor via the coupler below the handle.
3. Press the air release valve down until grease appears.
4. Pull the gun trigger until grease is forced out of the hydraulic coupler.

#### Maintenance

Cleaning: always keep your air supply clean and lubricated using a filter/lubricator (model 6604 is available). Your grease should be clear of any foreign particles, dirt etc and the gun should be checked and cleaned regularly.

#### Troubleshooting

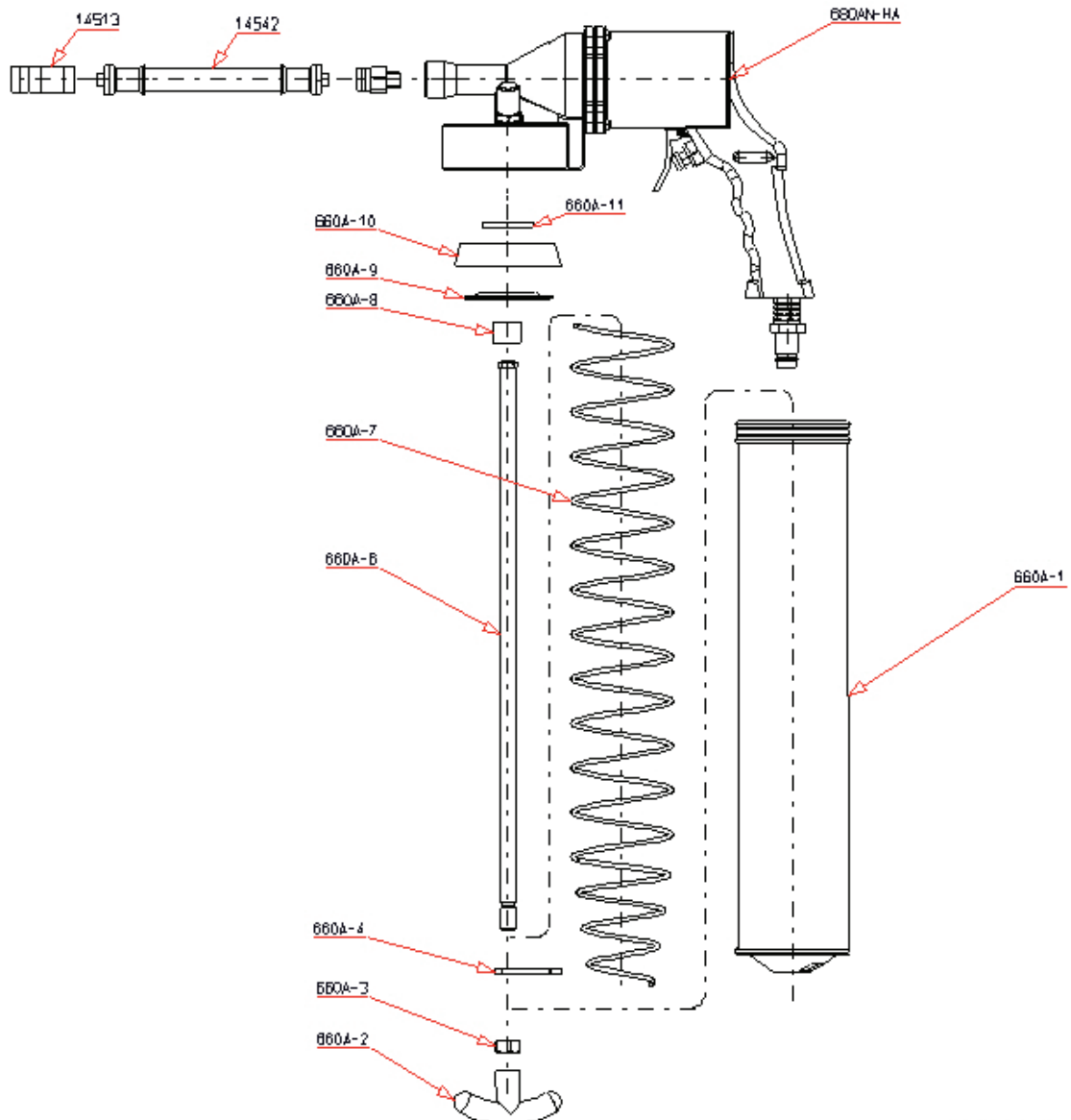
##### Air pockets in grease

If the gun is cycling but no grease is appearing from the coupler:

1. Depress the bleeder valve several times. If no change, unscrew the flexible extension from the gun head, activate gun and wait till grease splatters out. This is the air pocket being released.
2. Unscrew barrel 1-1/2 turns from head to allow air to release and activate gun.
3. Screw the flexible extension & barrel back on firmly and continue operating as normal.



# Parts And Drawing Breakdown For The 680AN



## Ordering Spare Parts

Parts List – Part No. 680AN Air Operated Grease Gun

Part No.	DESCRIPTION	QTY
680AN-HA	Complete Air Motor Head Assembly	1
660A-1	Barrel casing only	1
660A-2	T-grip handle	1
660A-3	Locking nut	1
660A-4	Arrester clamp	1
660A-6	Draw rod	1
660A-7	Spring	1
660A-8	Distance holder	1
660A-9	Forming disc	1
660A-10	Follower cup	1
660A-11	Washer	1
14542	50cm Flexible Hose Extension	1
14513	Grease Gun Coupler	1
600A-B	450gm Barrel Assembly Complete	1

NSW

TEL: (02) 9939 0711  
FAX: (02) 9939 0411

QLD/PNG

TEL: (07) 3889 8480  
FAX: (07) 3889 8490

VIC/TAS

TEL: (03) 8787 8288  
FAX: (03) 8787 8266

WA

TEL: (08) 9209 3066  
FAX: (08) 9209 3933

SA/NT

TEL: (08) 8241 7111  
FAX: (08) 8241 7011

NZ

TEL: (09) 447 1007  
FAX: (09) 447 1008