

SKF

**PROTECT
YOUR BEARINGS.
SEAL YOUR
HOUSINGS.**

TXL seals for SNL housings



Improve the service life of your SNL-mounted bearing solutions

In harsh environments, good seals make a significant difference. They keep contamination and water out, keep lubrication in, increase maintenance intervals and lower the risk of failure for the bearings they protect. That way, good seals can help reduce plant downtime and maintenance costs.

TXL contacting lip seals from SKF are made to work with SNL split plummer block housings in rough conditions. Designed for low friction and easy mounting, they can run at speeds of up to 11 m/s. They are made of SKF's proprietary polyurethane ECOPUR material with remarkable wear resistance. Testing confirms that they can withstand contamination better than comparable seals.



Demanding environments

Some bearings run in harsher conditions than others. SNL housings with TXL seals offer excellent protection against heavy contamination in industries like mining, metals and agriculture. They are ideal for applications like:

- Fans
- Material handling
- Conveyors
- Wood processing

Optimal performance design



Long service life

The design of the TXL seal is optimized for low friction and long service life in harsh environments. The ECOPUR material provides excellent mechanical properties, high wear resistance and chemical stability in a wide range of fluids at high operating temperatures.



Handles speed and misalignment

The TXL seal can accommodate a circumferential speed of up to 11 m/s. This makes the seal possible to use in almost every application where an SNL housing is used. The design can also handle misalignment up to 1° without a change in seal friction torque.



Energy efficient

The TXL seal offers low friction while maintaining superb sealing performance. In a test between comparable seals from different manufacturers, the TXL seal was shown to have the lowest friction, which translates into low energy consumption and CO₂ emissions (test available on page 4).

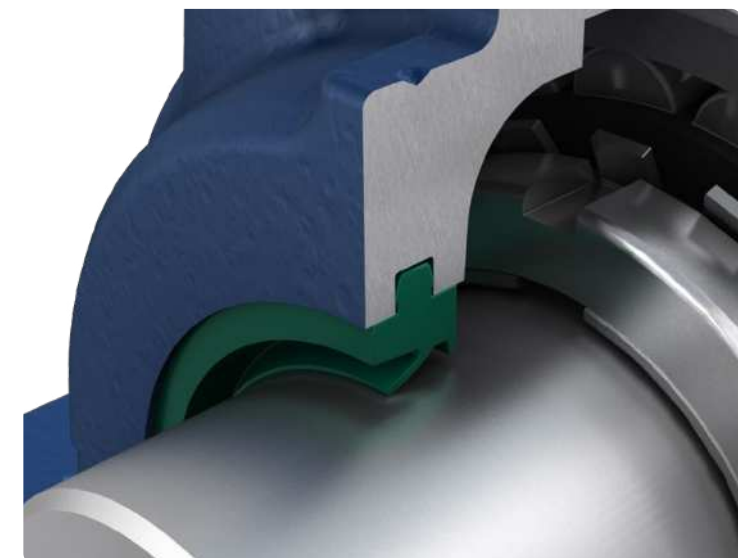
Snap-in design for good axial fit and easy installation of the seal

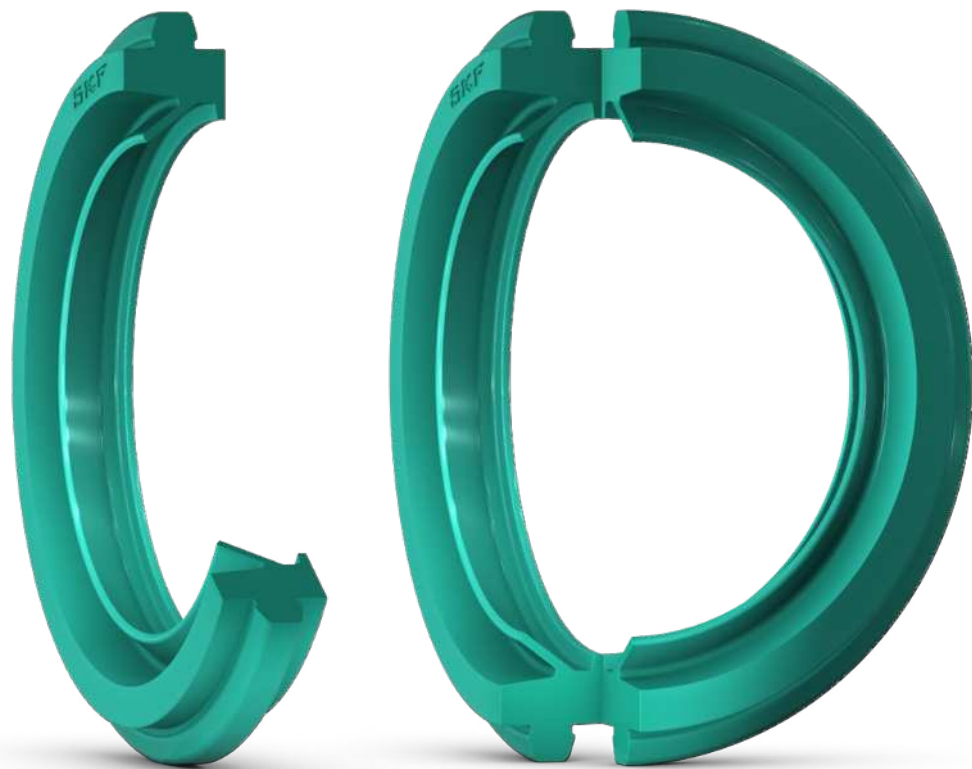
Very flexible dynamic excluder sealing lip offers good handling of misalignment and good grease flushing

Interference fit on the outer diameter provides proper static sealing and stable fit in the housing

A labyrinth lip creates a barrier for the grease to prevent grease exiting the bearing housing during operation

Groove creates a grease reservoir behind the sealing lip for good lubrication of the lip contact





Solid or split for easy mounting

Do you need a solid or a split seal? The TXL seal works as both. They are delivered as solid seals but pre-cut at two breaking points, so they can easily be turned into split seals by ripping them into two halves by hand. A flexible solution, perfect when you want to avoid dismounting the shaft.

Broad range, customizable options

You can choose from 36 standard catalogue sizes that are ready to order, with shaft diameters ranging from 30 to 150 mm. If you want a size outside our standard assortment, we offer the TXL-P version, machined with the SKF SEAL JET machining system to match your demands. This is especially helpful for maintenance and repair purposes. For even more demanding sealing needs, as in vertical arrangements of housings, we can also provide machined designs (TY and TZ versions).

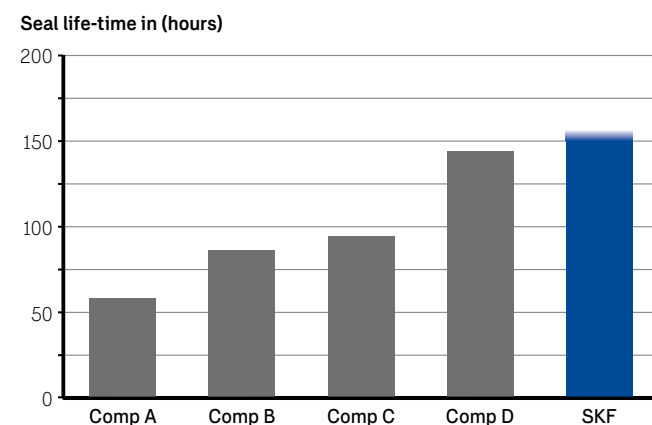
Optimized protection for SNL housings

- Designed for SNL housings
- High protection and low friction
- Solid or split for easy interchange
- Standard size range off the shelf: 30–150 mm shaft diameter
- Suited to speeds up to 11 m/s
- Made of high-performing ECOPUR sealing material
- Available in larger sizes as machined seals: TXL-P



Scan this QR code to see the [product tables](#)

Endurance in harsh conditions

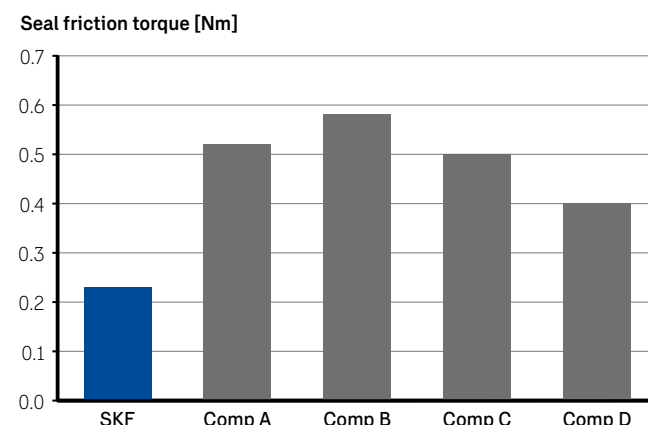


After more than 150 hours in an extreme mud and slurry test, the TXL seal had no leakage.

Mud and slurry test conditions

Internal test done by SKF. Seals partially submerged in fine Arizona test dust, salt and water.

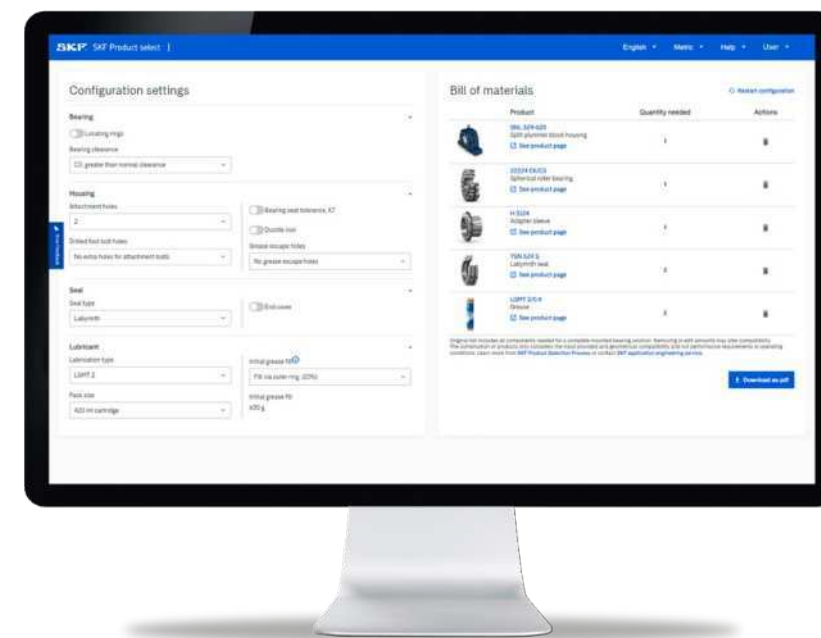
Very low friction



The TXL seal showed the lowest friction torque when tested against competitors.

Friction torque test conditions

Internal test done by SKF. Seals mounted on a 50 mm shaft running at 1500 r/min.



Configure a complete mounted bearing solution in a few easy steps with SKF Product select

This intuitive tool allows you to quickly configure a complete mounted bearing solution based on geometrical constraints and combine a housing, bearing, seals, and other associated products. As you input dimensions and desired product features, the tool dynamically updates compatible components. The bill of materials is automatically generated, updated and can be downloaded as a PDF. Try it now:



skf.com/product-select/housings



skf.com

* SKF, ECOPUR and SEAL JET are registered trademarks of AB SKF (publ).

©SKF Group 2025. All rights reserved. Please note that this publication may not be copied or distributed, in whole or in part, unless prior written permission is granted.

Every care has been taken to ensure the accuracy of the information contained in this publication, but no liability can be accepted for any loss or damage whether direct, indirect or consequential arising out of the use of the information contained herein.

PUB BU/P2 19827/1 EN · March 2025

Certain image(s) used under license from shutterstock.com