

RAIL TUG

WELDING AND CUTTING CARRIAGE

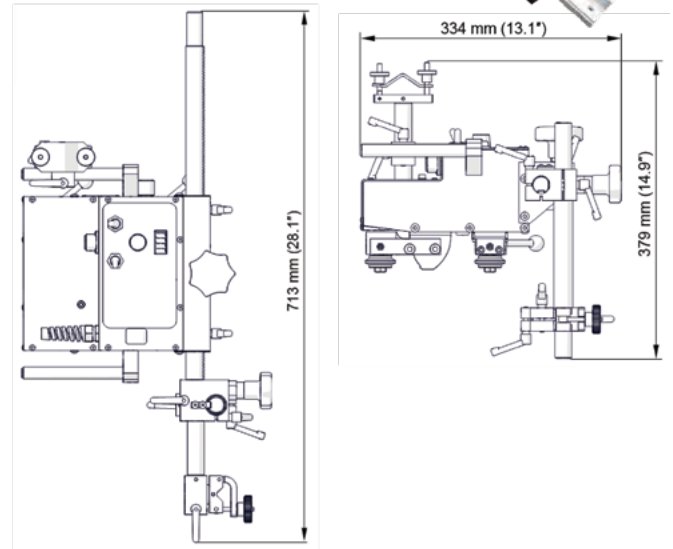
Overview

The Rail Tug is a digitally controlled travel tractor designed for the mechanization of welding and thermal cutting processes. The Rail Tug can be used with semi-flexible track for plate and tank work with a minimum radius of 5m (16 ft) or adapted to bent ring rail for pipe and tube applications.

Using a vacuum system allows the track to be clamped to non-ferrous surfaces (stainless steel, aluminium etc.)

The Rail Tug economically meets a broad array of welding and cutting applications on flat or curved plate, tube and pipe.

Part No.		RAIL TUG
Voltage		1~115-230 V, 50/60 Hz
Power		66w
Welding position		PA / 1F / 1G PB / 2F PC / 2G PD / 4F PE / 4G PG / 3F (Please contact your dealer)
Fixing on pipes and around work pieces	Ring tracks	from 200mm OD up to 3m OD
	Custom rolled tracks	from 3m OD up to 10m OD
	Semi-flexible track	Minimum curvature radius of 5m
Torch type		MIG/MAG, SAW, Plasma, Oxy-fuel
Torch diameter	MIG/MAG	16-22mm up to 35mm (option)
	SAW, Plasma	
	Oxy-fuel	
Horizontal pulling force		300N
Vertical pulling force		200N
Horizontal speed		10-200cm/min
Vertical speed		10-200cm/min
Weight		10kg



Features

- Compact, lightweight design
- Closed-loop position control system based on electric motor with encoder - ensures increased accuracy of speed and position
- Rack and pinion drive
- Consistent heat input reduces distortion
- Reduces wasted filler metal - eliminates over welding
- Digital LED display for presetting of travel speed
- Automatic arc on/off initiates welding and travel simultaneously
- Oxy-fuel and plasma cutting possible with optional accessories
- Suitable for variety of circumferential and irregular surface applications down to minimum radius of 10mm (4")
 - Ring tracks on diameters from 200mm (8") OD up to 3m (10ft) OD
 - Custom rolled tracks on diameters from 3m (10ft) OD up to 10m (32ft) OD
 - Semi-flexible tracks can be flexed to minimum radius of 5m (16ft) without permanent deformation
- Quick-clamping torch holder mechanism for different types of torches with diameters of 16-22mm (0.63-0.87"); up to 35mm (1.38") option
- Precise torch adjustment with screw drive cross slide
- Convenient external 230V, 115V power supply
- Improves working environment - removes operator from heat and fumes
- High speed up to 3m/min makes plasma cutting available



Track Systems

Trademaster offers lightweight and portable track system for a variety of circumferential and straight line applications. The rigid and semi-flexible tracks are joinable for unlimited run length and can be mounted to work surface with several types of magnetic units or vacuum units for non-ferrous applications to allow travel in any plane or position. Choose the appropriate track system and auxiliary accessories for your own application.

Ring Tracks

For circumferential applications from 200mm OD up to 3000mm OD.

Ring tracks can be equipped with various supports depending on the customer's needs.



Support with bolts
WAP-RB2210



Support with magnets
WAP-RB2208



Support with plastic feet
WAP-RB2209

Custom Rolled Tracks

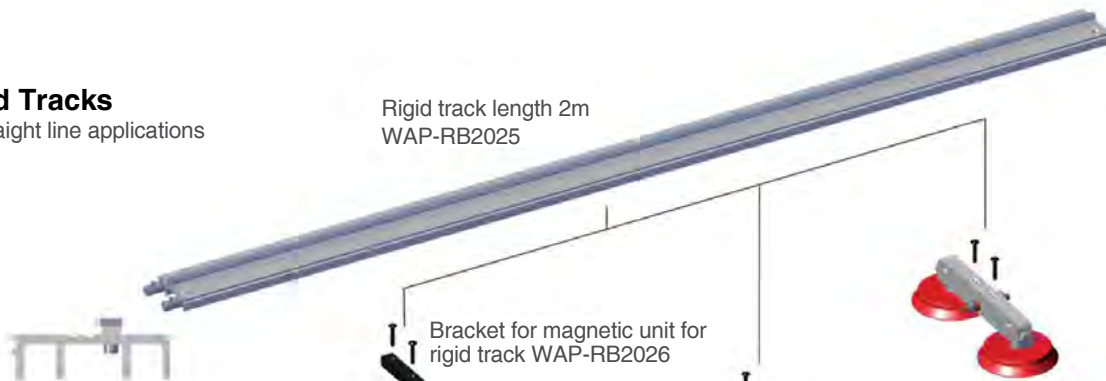
for circumferential applications from 3m OD up to 10m OD



Rigid Tracks

for straight line applications

Rigid track length 2m
WAP-RB2025



Bracket for magnetic unit for
rigid track WAP-RB2026



Vacuum modular unit
WAP-RB3010

Magnetic narrow
unit with hexagon
WAP-RB2015

Magnetic spacing adjustable unit

Magnetic pivoting unit

Heat resistant magnetic unit

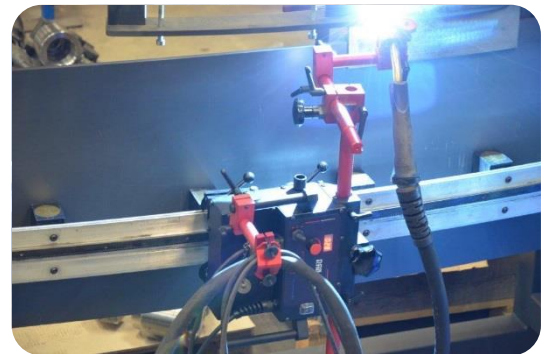
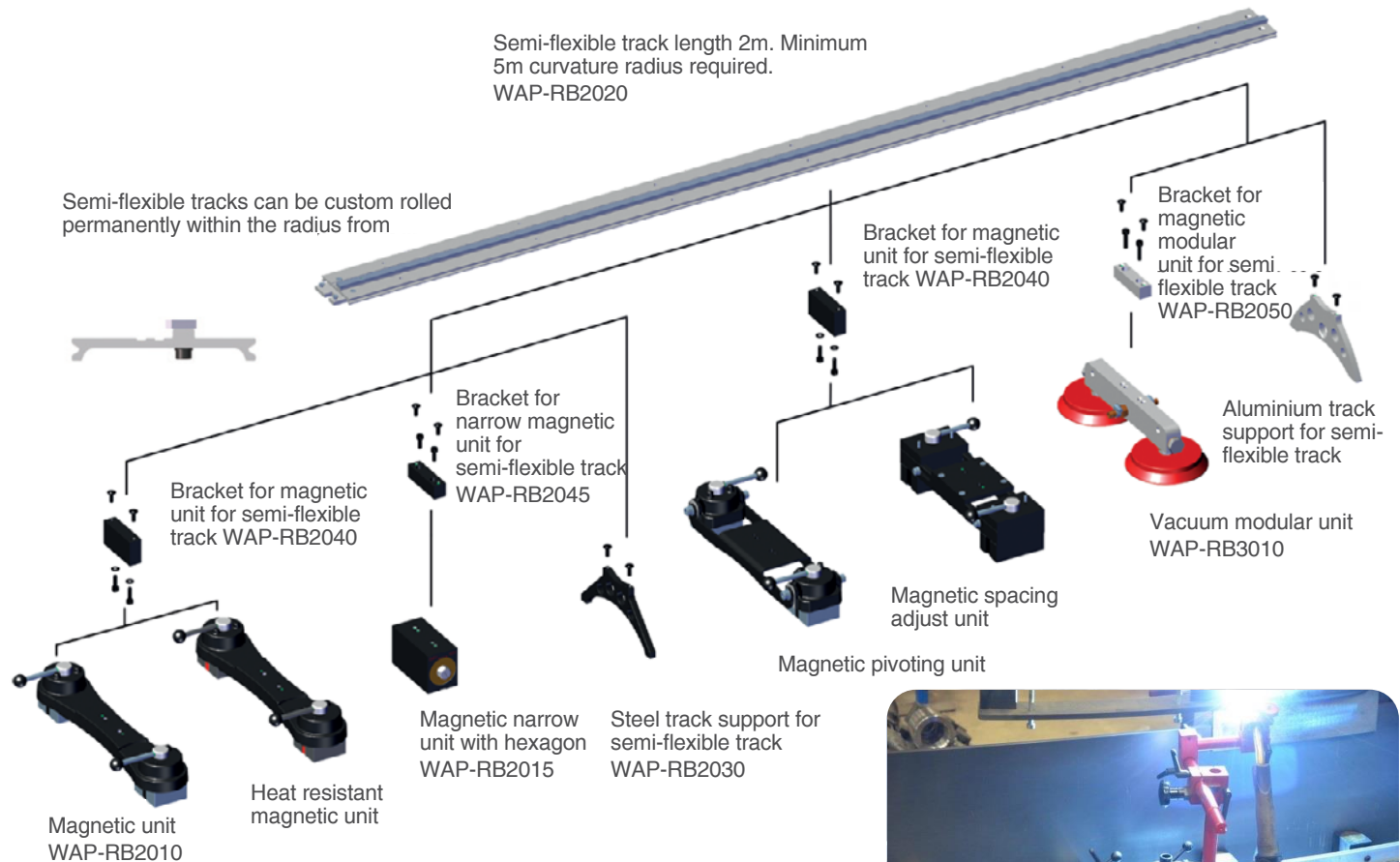
Magnetic unit
WAP-RB2010



Semi-Flexible Tracks

For circumferential and straight line applications

They can be flexed inside or outside to a minimum radius of 5.0m or 10.0m diameter without permanent deformation. Semi-flexible tracks can be flexed also permanently within the radius range from 1.5m up to 5m. They are available as CUSTOM ROLLED TRACKS.



Vacuum Track System

for non-ferrous applications

Trademaster's vacuum fixing system provides firm grip of rail tracks on both ferromagnetic and nonferromagnetic materials (aluminum or stainless steel constructions). Portable vacuum pump with safety reservoir generates vacuum and supports up to 21 vacuum units. System can be configured as serial or parallel connection.

