

PRO 40 PBS

PIPE BEVELLING MACHINE

Overview

The PRO 40 PBS is designed for bevelling and facing pipes, tanks and tubes in a range of diameters from 200mm to 1000mm. A high-speed rotary milling head with replaceable inserts enables effective and efficient machining with bevel widths up to 45mm and angles between 0° and 60°. Internal bevelling and J-groove end preparation is an available option.

The use of a heavy duty milling head in the PRO 40 PBS offers accurate bevels in a fraction of the time compared to traditional single point machining. This feature saves time and money as well as improving accuracy.



Maximum OD bevel width up to 45mm within a range of angles from 0° - 60°



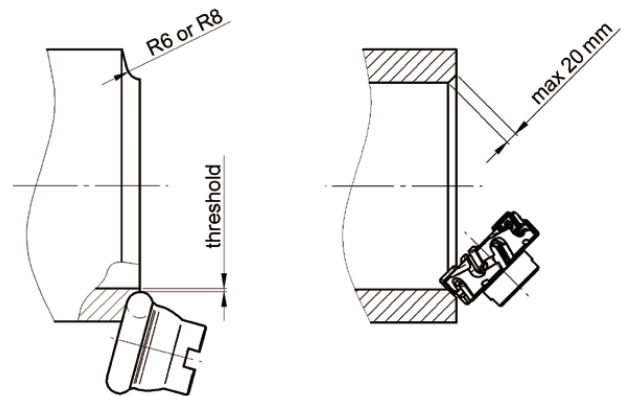
Optional ID beveling max width up to 20mm (13/16") within a range of angles from 0° - 60°



Optional J groove beveling attachment available with either 6 or 8 mm radius

Part No.	PRO40PBS
Power supply	1 Phase 208 - 230V, 50/60 Hz
External pipe diameter range	200 - 1000mm pipes longer than 830mm; 200 - 600 mm pipes of 400-830mm length
Maximum allowed pipe weight	10 000kg, if active support equipped with optional steel rollers
Min. pipe thickness	5mm
Pipe fixing	Mechanical with chain
Feed rate	100-1100 mm/min
Bevelling angle range	0-60° with continuous angle adjustment
Max OD bevel width	45mm
Max ID bevel width	5mm standard, up to 20mm - Optional
Bevelling type "J"	YES - Optional
"J" type bevelling radius	6mm or 8mm

Operations with optional heads

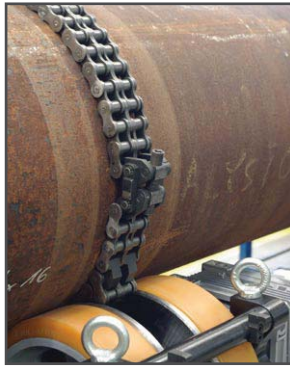


* 6000 kg for plastic rollers of active support (standard)

Features



Clamping device for short pipes \varnothing 400 – 830mm



Adjustable chain (\varnothing 200 – 1000mm) ensures positive axial rotation



User-friendly control panel



Heavy-duty adjustable pipe support (\varnothing 200–1000mm)



Shields and internal lighting increase safety and comfort of the operator

Optional Accessories & Consumables

- Standard Milling head (7 inserts required), Part# WAP-B40/8010
- Cutting inserts for bevelling (10 pack), Part# WAP-B2010
- J-groove R6 milling head (6 inserts R6 required), Part# WAP-B40/8020
- Cutting insert for J groove R6 end preparation, Part# WAP-B40/8040
- J-groove R8 milling head (5 inserts R8 required), Part# WAP-B40/8030
- Cutting insert for J groove R8 end preparation, Part# WAP-B50/8050