

GECKO STANDARD

GECKO HS HIGH SPEED

GECKO BATTERY BATTERY POWERED FILLET WELDING CARRIAGE



Battery Powered Model
WA-GECKO-18V

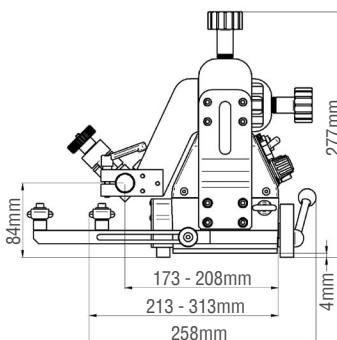
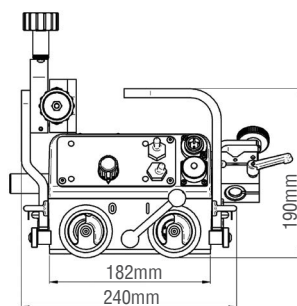
- Portable fillet welding carriage designed to produce consistent high-quality welds
- 4-Wheel drive system with magnetic base traction and a control loop feedback mechanism, does not require track to operate.
- Constant, continuous and repeatable travel speed enables weld bead geometry that is exact to the required specifications, thus substantially reducing costly over welding and decreasing filler metal usage.
- **GECKO-HS** is suitable for both speed welding and plasma cutting
- Compact & lightweight design with durable aluminium housing
- Permanent magnet clamping system with on/off lever ensures positive magnetic traction
- Maintenance free 4-wheel drive with worm gear reduction
- Quick clamping torch holder mechanism for different types of MIG/MAG torches with diameters of 16 - 22mm (5/8" - 7/8"). Optional 35mm torch holder available
- Precise torch adjustment with screw drive cross slide
- Multi-functional L.E.D. display - pre-setting of travel speed, metric & imperial units, error codes information
- Closed loop speed control system stabilises travel speed to reduce weld defects and costly rework
- Consistent heat input reduces distortion
- Automatic arc ON / OFF system initiates welding and travel, simultaneously
- Self-guiding roller arms eliminate the need for track
- Improves working environment - removes operator from heat and fumes

High-Speed Model Features

- Increased horizontal maximum speed from 1100mm/min to 2200mm/min making it suitable for both speed welding and plasma cutting

Battery Powered Model Features

- Supplied with 18V DC 5.2 Ah battery providing 6 hours average operation time (Charger sold separately WAP-G3510)
- Gecko Battery can also be connected to 240V AC mains by means of power supply (Sold separately WAP-G3520)



Suitable for vertical welding operations



Package Includes

- Welding carriage
- Power lead
- Arc ignition cable
- Torch holder
- Guide arms
- 4mm Allen key
- Operator's manual

Standard Part No.	WA-GECKO
High-Speed Part No.	WA-GECKO-HS
Battery Model Part No.	WA-GECKO-18V
Power supply	115-230VAC / 50-60Hz
Welding positions	Vertical / Horizontal
Chassis to material clearance	4mm
Travel mechanism	Friction Drive With Worm Gear Reduction, 4 Wheel Drive, Heat Resistant Silicone Wheels
Tracking method	2-Guide Rollers
Torch adjustment	Up-Down 35mm, Left-Right 35mm
Gear roller adjustment	100mm
Horizontal speed (GECKO)	0-1100mm/min
Horizontal speed (GECKO - HS)	0-2200mm/min
Vertical speed	0-1000mm/min
Dimensions	240mm (L) x 258mm (W) x 253mm (H)
Weight	8kg (8.6kg Battery Model)

GECKO & LIZARD ACCESSORIES



DUAL TORCH MOUNT

Part No.	Description
WAP-G2010	Dual Torch Mount - Enables Mounting Of A Second Torch For Dual Sided Fillet Welding



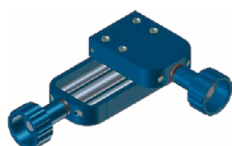
TORCH EXTENSION ARM

Part No.	Description
WAP-G2020	Torch Extension Arm To Suit Gecko & Lizard



CABLE ANCHOR

Part No.	Description
WAP-G2095	Cable Anchor



EXTENDED CROSS SLIDE

Part No.	Description
WAP-G8015	Extended Cross Slide, To Suit Gecko & Lizard, 76mm Up And Down, 35mm Left And Right



MAGNETIC BLOCKS

Part No.	Description
WAP-G2130	Magnetic Block Front, To Suit Gecko - Additional Magnetic Adhesion
WAP-G2140	Magnetic Block Rear, To Suit Gecko - Additional Magnetic Adhesion



FLEXIBLE TRACK SETUP TOOL

Part No.	Description
WAP-G2110	Guide Adjustment Tool, For Setting Up Flexible Track



EDGE GUIDE ARMS

Part No.	Description
WAP-G2030	Edge Guide Arms To Suit Gecko - Enables Guiding Off An Outside Edge
WAP-L4010	Edge Guide Arms To Suit Lizard - Enables Guiding Off An Outside Edge



STANDARD GUIDE ARMS

Part No.	Description
WAP-G2005	Standard Guide Arm Set To Suit Gecko, As Supplied With Machine
WAP-L4005	Standard Guide Arm Set To Suit Lizard, As Supplied With Machine



MAGNETIC GUIDE ARMS

Part No.	Description
WAP-G2120	Magnetic Guide Arm Set, To Suit Gecko
WAP-L4060	Magnetic Guide Arm Set, To Suit Lizard



ADJUSTABLE GUIDE ARMS

Part No.	Description
WAP-G2040	Adjustable Guide Arms To Suit Gecko - Enables Guiding On Lap Joints And Templates
WAP-L4020	Adjustable Guide Arms To Suit Lizard - Enables Guiding On Lap Joints And Templates



WIDE ROLLER GUIDE ARM SET

Part No.	Description
WAP-G2150	Wide Roller Guide Arm Set, To Suit Gecko
WAP-L4080	Wide Roller Guide Arm Set, To Suit Lizard



KNURLED LOCKING NUTS

Part No.	Description
WAP-L4070	Knurled Locking Nuts For Guide Arms, To Suit Lizard

GECKO & LIZARD ACCESSORIES



LARGE TORCH CLAMP

Part No.	Description
WAP-L4040	Large Torch Clamp For Holding Torches Diameter 22 - 35mm To Suit Lizard



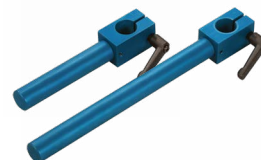
TORCH HOLDER CLAMP

Part No.	Description
WAP-G2160	Torch Holder Clamp, 16 - 22mm Dia, To Suit Welding Carriages



STANDARD TORCH CLAMP

Part No.	Description
WAP-G2090	Torch Clamp Assembly To Suit Gecko



TORCH ARMS

Part No.	Description
WAP-G2050	110mm Length Torch Arms To Suit Gecko & Lizard
WAP-L4030	230mm Length Torch Arms To Suit Gecko & Lizard

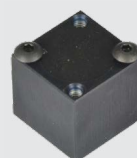
GECKO & LIZARD OPTIONAL TRACK SYSTEMS

Flexible Guidance Track To Suit Gecko & Lizard

- Cost effective and simple flexible track guidance system for the Gecko and Lizard welding and bevelling carriages



WAP-G2060



WAP-G2070



WAP-G2080
WAP-L4050

Part No.	Description
WAP-G2080	Follower Guide Arms For Flexible Track To Suit Gecko
WAP-L4050	Follower Guide Arms For Flexible Track To Suit Lizard
WAP-G2060	1825mm Flexible Track To Suit Gecko & Lizard
WAP-G2070	Magnetic Block To Suit Flexible Track

Flexible Trackway To Suit Gecko & Lizard

- Carriage runs on top of the track, reducing the footprint of the setup compared to track shown above.
- Flexible trackway min curvature 1.25m

