



TRADE SERIES

PETROL GENERATOR

OPERATOR'S MANUAL



GT SERIES

Models: GT2800, GT3500, GT4000, GT6800, GT8100, GT10000

! TO PREVENT SERIOUS INJURY OR DAMAGE TO YOUR GENERATOR, READ AND UNDERSTAND ALL WARNINGS AND INSTRUCTIONS BEFORE USE **!**

Ver: 1.8

www.itmtools.com.au

TABLE OF CONTENTS

Warranty	2
Product Specifications	3
Safety Instructions	4
Unpacking	6
Assembly	7
Operation	9
Maintenance	20
Trouble Shooting	26
Parts Lists & Breakdowns	27
Wiring Diagram	39

LIMITED WARRANTY

Industrial Tool & Machinery Sales (hereinafter referred to as ITMS) will, within twelve (12) months from the original date of purchase, repair or replace any goods found to be defective in materials or workmanship.

This warranty is void if the item has been damaged by accident, neglect, improper service or other causes not arising out of defects in materials or workmanship. This warranty does not apply to machines and/or components which have been altered, changed, or modified in any way, or subjected to overloading or use beyond recommended capacities and specifications. Worn componentry due to normal wear and tear is not a warranty claim. Goods returned defective shall be returned prepaid freight to ITMS or agreed repair agent, which shall be the buyer's sole and exclusive remedy for defective goods. ITMS accepts no additional liability pursuant to this guarantee for the costs of travelling or transportation of the product or parts to and from ITMS or the service agent or dealer, such costs are not included in this warranty.

Our goods come with guarantees which cannot be excluded under the Australian Consumer Law. You are entitled to replacement or refund for a major failure and to compensation for other reasonably foreseeable loss or damage. You are also entitled to have the goods repaired or replaced if the goods fail to be of acceptable quality and the failure does not amount to a major failure.

**THE MANUFACTURER RESERVES THE RIGHT TO MAKE IMPROVEMENTS AND
MODIFICATIONS TO DESIGN WITHOUT PRIOR NOTICE.**

PRODUCTS IMPORTED AND DISTRIBUTED NATIONALLY BY:



INDUSTRIAL TOOL & MACHINERY SALES
18 BUSINESS ST, YATALA QLD 4207
T: 07 3287 1114 E: sales@industrialtool.com.au
F: 07 3287 1115 W: www.itmtools.com.au

PRODUCT SPECIFICATIONS

Thank you for purchasing this ITM GT SERIES Generator. This generator is suitable for various trade worksites, recreational uses and backup power. With built-in Pure Sine Wave technology (THD<5%), it's also ideal for powering tools, domestic appliances and sensitive electronics.

MODEL	GT2800	GT3500	GT4000	GT6800	GT8100	GT10000
Part Number	TM510-2300	TM510-2800	TM510-3400	TM510-5500	TM510-6500	TM510-8000
Voltage	240V ~ 50Hz	240V ~ 50Hz	240V ~ 50Hz	240V ~ 50Hz	240V ~ 50Hz	240V ~ 50Hz
KvA	2.8	3.5	4	6.8	8.1	10
Max Power	2300W	2800W	3400W	5500W	6500W	8000W
Rated Power	2000W	2500W	3200W	5000W	6000W	7500W
Amps	8.3	10.4	14	20.8	25	31.25
Horse Power	7HP	7HP	8HP	13HP	15HP	17HP
Engine Type	4 Stroke	4 Stroke	4 Stroke	4 Stroke	4 Stroke	4 Stroke
Fuel Tank (L)	15	15	15	25	25	25
Fuel Type	Ron 91	Ron 91	Ron 91	Ron 91	Ron 91	Ron 91
Engine Power cc	212	212	224	420	420	457
Noise @ 7Mtr (full load)	75dB(A)	75dB(A)	76dB(A)	78dB(A)	79dB(A)	80dB(A)
Running Time 50% Load	19 Hours	16 Hours	14 Hours	13 Hours	12 Hours	10 Hours
DC Power	12V 8.3A	12V 8.3A	12V 8.3A	12V 8.3A	12V 8.3A	12V 8.3A
AC outlets	2 x 15A	2 x 15A	2 x 15A	2 x 15A	2 x 15A	2 x 15A
Start System	Recoil	Recoil	Electric	Electric	Electric	Electric
Pure Sine Wave	THD<5%	THD<5%	THD<5%	THD<5%	THD<5%	THD<5%
Alternator	AVR*	AVR*	AVR*	AVR*	AVR*	AVR*
Circuit Breaker	Yes	Yes	Yes	Yes	Yes	Yes
Residual Current Device "RCD"	No	No	No	No	No	No
Oil Capacity	0.6L	0.6L	0.6L	1.1L	1.1L	1.1L
Recommended Oil	10W 30	10W 30	10W 30	10W 30	10W 30	10W 30
Low Oil Sensor	Yes	Yes	Yes	Yes	Yes	Yes
Wheel & Handle Kit	No	No	No	Yes	Yes	Yes
Weight	41Kg	44Kg	52Kg	82Kg	85Kg	95Kg

* (Automatic voltage regulator)

GENERAL SAFETY RULES FOR OPERATION**DANGER**

Never use the generator in a location that is wet or damp. Never expose the generator to rain, snow, water spray or standing water while in use. Protect the generator from all hazardous weather conditions. Moisture or ice can cause a short circuit or other malfunction in the electrical circuit.

Never operate the generator in an enclosed area. Engine exhaust contains carbon monoxide. Only operate the generator outside and away from windows, doors and vents.

WARNING

Voltage produced by the generator could result in death or serious injury.

- Never operate the generator in rain or a flood plain unless proper precautions are taken to avoid being subject to rain or a flood.
- Never use worn or damaged extension cords.
- Always have a licensed electrician connect the generator to the utility circuit.
- Never touch an operating generator if the generator is wet or if you have wet hands.
- Never operate the generator in highly conductive areas such as around metal decking or steel works.
- Always use grounded extension cords. Always use three-wire or double-insulated power tools.
- Never touch live terminals or bare wires while the generator is operating.
- Be sure the generator is properly grounded before operating.

WARNING

Petrol and petrol vapors are extremely flammable and explosive under certain conditions.

- Always refuel the generator outdoors, in a well-ventilated area.
- Never remove the fuel cap with the engine running.
- Never refuel the generator while the engine is running. Always turn engine off and allow the generator to cool before refueling.
- Only fill fuel tank with petrol.
- Keep sparks, open flames or other form of ignition (such as match, cigarette, static electric source away when refueling.
- Never overfill the fuel tank. Leave room for fuel to expand. Overfilling the fuel tank can result in a sudden overflow of petrol and result in spilled petrol coming in contact with HOT surfaces. Spilled fuel can ignite. If fuel is spilled on the generator, wipe up any spills immediately. Dispose of rag properly. Allow area of spilled fuel to dry before operating the generator.
- Wear eye protection while refueling.
- Never use petrol as a cleaning agent.
- Store any petrol containers in a well-ventilated area, away from any source of ignition.
- Check for fuel leaks after refueling. Never operate the engine if a fuel leak is discovered.

WARNING

Never operate the generator if powered items overheat, electrical output drops, there is sparking, flames or smoke coming from the generator, or if the receptacles are damaged.



Never use the generator to power medical support equipment.



Always remove any tools or other service equipment used during maintenance from the generator before operating.

NOTICE

Never modify the generator.

Never operate the generator if it vibrates at high levels, if engine speed changes greatly or if the engine misfires often.

Always disconnect tools or appliances from the generator before starting.

ADDITIONAL SAFETY RULES FOR GENERATORS

Do not force the generator. Use the correct generator for your application. The correct generator will do the job better and safer at the rate for which it was designed.

Do not use the generator if the engine switch does not turn it on and off. Any generator that cannot be controlled with the switch is dangerous and must be repaired.

Know exactly how to use the generator correctly. Be thoroughly familiar with proper use of the equipment and all engine controls, output receptacles, and connections. Know how to stop the engine quickly (see "Stopping the Generator").

Instruct operators. The engine owner must instruct all operators in safe engine set-up and operation. Only trained adults should set up and operate the engine – Do not let children operate.

Intended use. Carefully read about and understand the intended use of this engine. Do not use for other purposes, as unforeseen hazards or equipment damage may result.

Never operate, or let anyone else operate the generator while under the influence of alcohol, drugs, or medication.

Do not operate the generator with damaged, missing, or broken parts.

Do not modify the generator in any way. Modifications can create serious safety hazards and will also void the warranty.

Never attempt to modify the generator speed setting. The generator speed is preset for safe and optimal performance of the generator. If speed needs adjusting, it must be done by factory authorised personnel.

Never attempt to connect external fuel sources in order to increase generator run time. Larger tank at pressure or higher elevation will cause to leak from carburetor during operation. Fire or explosion could result.

Always turn off generator and remove spark plug(s) or spark plug wire(s) before working on the generator to prevent accidental starting. Always discharge the capacitor before working on the generator head to prevent electrical shock. (See Maintenance & Repair section of this manual for instructions on how to do this.)

The running of a generator gives off carbon monoxide, a poisonous gas that can kill you. You CANNOT smell it, see it, or taste it. Follow all instructions for site selection and positioning the generator, and avoid inhaling the exhaust. If you start to feel sick, dizzy, or weak while using the generator, shut off the generator and get to fresh air RIGHT AWAY. See a doctor. You may have carbon monoxide poisoning.

UNPACKING

⚠ CAUTION ⚠

Always have assistance when lifting the generator. The generator is heavy; lifting it could cause bodily harm.

Avoid cutting on or near staples to prevent personal injury.

Tools required - Box cutter or similar device.

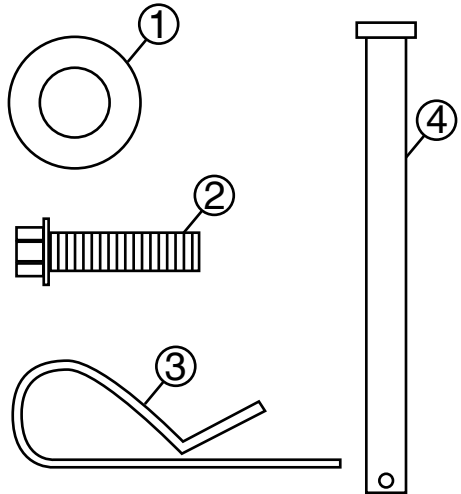
1. Carefully cut the packing tape on top of the carton.
2. Fold back top flaps to reveal the manual.
3. Remove the Wheel Kit Accessories cardboard box.
4. Carefully cut two sides of the carton to remove the generator.

WHAT COMES IN THE BOX

Manual (1)
Spark Plug Socket Wrench (1)
Wheel Kit Accessories Box (1) if any
Funnel (1)

WHEEL KIT ACCESSORIES BOX

Open the Wheel Kit Accessories box and verify the contents against the list right. If any parts are missing, please locate an authorised.



Wheel and Feet Kit Hardware

1. Washer (2 used)
2. Flange Bolt M8 x16mm (4 used)
3. Hairpin Cotter Pin (2 used)
4. Wheel Axle Pin (2)

ASSEMBLY

⚠ CAUTION ⚠

Never lift the generator without assistance. The generator is heavy and lifting without assistance could result in personal injury.

Never use the handles as a lifting point to support the entire weight of the generator. Only use the handles to move the generator by lifting the handles and using the wheels to move the generator.

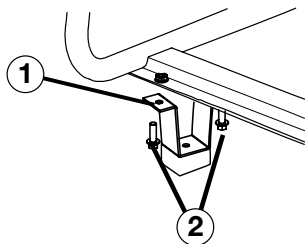
Use caution when collapsing the handles. Hands and fingers could get caught and pinched.

NOTICE

Assembling the generator will require lifting the unit on one side. Make sure all engine oil and fuel are drained from the unit prior to assembling. Once assembled, the wheel kit is not intended for on-road use. The wheel kit is designed for use on this generator only.

INSTALLING FEET TO FRAME

1. Place generator on a flat surface.
2. Place a piece of cardboard or other soft material to tip the generator onto, to protect the frame paint and prevent the generator from sliding. Tip the generator onto the side.
3. Install the mounting feet to the frame using the M8 flange bolts included.
 - 1 - Mounting Foot
 - 2 - Flange Bolts M8



INSTALLING WHEELS TO FRAME

1. Insert axle pin through washer and wheel.

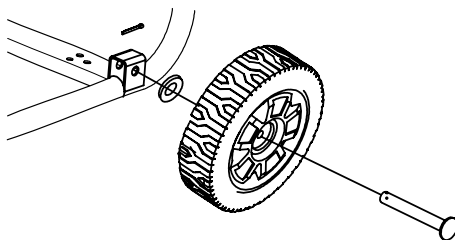
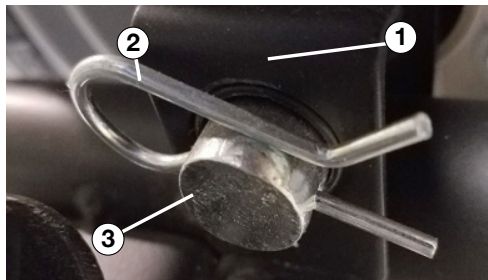


Figure 2 - Wheel Assembly

2. Install the wheel with axle pin through the axle bracket on the frame. The eye of the bolt should be facing toward the inside of the generator.



3. Install the hairpin cotter through the axle pin to lock it in place.
 - 1 - Axle Bracket
 - 2 - Hairpin Clip
 - 3 - Axle Pin
4. Repeat previous steps on other wheel.

ASSEMBLY**⚠ WARNING ⚠**

To avoid electric shock:

- ALWAYS connect the positive (+) battery cable (red boot) first when connecting battery cables.
- ALWAYS disconnect the negative (-) battery cable (black boot) first when disconnecting battery cables.
- NEVER connect the negative (-) battery cable (black boot) to the positive (+) post on the battery.
- NEVER connect the positive (+) battery cable (red boot) to the negative (-) post on the battery.
- NEVER touch both battery posts simultaneously.
- NEVER place a metal tool across both battery posts.
- ALWAYS use insulated or nonconducting tools when installing the battery.

3. Install the hair pin cotter through the axle pin to lock it in place.
 - 1 - Axle Bracket
 - 2 - Hairpin Clip
 - 3 - Axle Pin
4. Repeat previous steps on other wheel.
5. Pull back the black boot and securely attach



Figure 5 - Locating Negative (-) Cable

the negative (-) battery cable (black boot) to the negative (-) battery post as shown in Figure 4. Replace the black boot so it protects the cable lug and battery post.

1. Always make sure to attach the positive (+) battery cable first (1) and then the negative (-) cable second (2) (see Figure 4).



Figure 4 - Battery Connection Order

- 1 - Positive (+) Battery Cable (Red)
- 2 - Negative (-) Battery Cable (Black)

2. Securely tighten the positive (+) battery cable (red boot) to the positive (+) battery post. Make sure boot is over battery post.

NOTICE

The electric start generator is equipped with a battery charging feature. Once the engine is running, a small charge is supplied to the battery via the battery cables and will slowly recharge the battery.

⚠ WARNING ⚠

When you have finished using your generator, ensure you disconnect the positive cable from the battery prior to storage. Failure to do so can cause the battery to discharge resulting in sulfation of battery plates which is not covered under warranty.

OPERATION

LOCATION SELECTION

Before starting the generator, avoid exhaust and location hazards by verifying:

- You have selected a location to operate the generator that is outdoors and well ventilated.
- You have selected a location with a level and solid surface on which to place the generator.
- You have selected a location that is at least 15 feet (4.5 m) away from any building, other equipment or combustible material.
- If the generator is located close to a building, make sure it is not located near any windows, doors and/or vents.

⚠ DANGER ⚠

Using a generator indoors
CAN KILL YOU IN MINUTES.

Generator exhaust contains carbon monoxide.
This is a poison you cannot see or smell.



NEVER use inside a home or garage, **EVEN IF** doors and windows are open.



Only use **OUTSIDE** and far away from windows, doors, and vents.

Avoid other generator hazards.
READ MANUAL BEFORE USE.

⚠ WARNING ⚠

Always operate the generator on a level surface. Placing the generator on non level surfaces can cause the generator to tip over, causing fuel and oil to spill. Spilled fuel can ignite if it comes in contact with an ignition source such as a very hot surface.

HIGH ALTITUDE OPERATION

Engine power is reduced the higher you operate above sea level. Output will be reduced approximately 3.5% for every 1000ft of increased altitude from sea level. This is a natural occurrence and cannot be adjusted by engine. Increased exhaust emissions can also result due to increased fuel mixture. Other issues include hard starting, increased fuel consumption and spark plug fouling.

NOTICE

Only operate the generator on a solid, level surface. Operating the generator on a surface with loose material such as sand or grass clippings can cause debris to be ingested by the generator that could:

- Block cooling vents
- Block air intake system

WEATHER

Never operate your generator outdoors during rain, snow or any combination of weather conditions that could lead to moisture collecting on, in or around the generator.

DRY SURFACE

Always operate the generator on a dry surface free of any moisture.

NO CONNECTED LOADS

Make sure the generator has no connected loads before starting it. To ensure there are no connected loads, unplug any electrical extension cords that are plugged into the control panel receptacles.

NOTICE

Starting the generator with loads already applied to it could result in damage to any appliance being powered off the generator during the brief start-up period.

⚠ WARNING ⚠

Be sure the generator is properly connected to earth ground before operating. The generator must be grounded to prevent electrical shock due to faulty appliances.

OPERATION

CONNECTING THE GENERATOR TO A BUILDING ELECTRICAL SYSTEM

It is recommended to use a manual transfer switch when connecting directly to a buildings electrical system. Connecting a portable generator to a buildings electrical system must be made in strict compliance with all national and local electrical codes and laws, and be completed by a qualified electrician.doors and/or vents.

ADDING / CHECKING ENGINE FLUIDS AND FUEL

⚠ DANGER ⚠



Filling the fuel tank with petrol while the generator is running can cause petrol to leak and come in contact with hot surfaces that can ignite the petrol.

Before starting the generator, always check the level of:

- Engine oil
- Petrol in the fuel tank

Once the generator is started and the engine gets warm, it is not safe to add petrol to the fuel tank or engine oil to the engine while the engine is running or the engine and muffler are hot.

CHECKING AND / OR ADDING ENGINE OIL

⚠ WARNING ⚠

Internal pressure can build in the engine crankcase while the engine is running. Removing the oil fill plug/ dipstick while the engine is hot can cause extremely hot oil to spray out of the crankcase and can severely burn skin. Allow engine oil to cool for several minutes before removing the oil fill plug/ dipstick.

The unit as shipped does not contain oil in the engine. You must add engine oil before starting the generator for the first time.

OPERATION

ADDING PETROL TO THE FUEL TANK

⚠ WARNING ⚠

Never refuel the generator while the engine is running.

Always turn the engine off and allow the generator to cool before refueling.

Required Petrol

Only use petrol that meets the following requirements:

- Unleaded petrol only
- Petrol with maximum 10% ethanol added
- Petrol with an 87 octane rating or higher

Filling the Fuel Tank

Follow the steps below to fill the fuel tank:

1. Shut off the generator.
2. Allow the generator to cool down so all surface areas of the muffler and engine are cool to the touch.
3. Move the generator to a flat surface.
4. Clean area around the fuel cap.
5. Remove the fuel cap by rotating counterclockwise.
6. Slowly add petrol into the fuel tank. Be very careful not to overfill the tank. The petrol level should NOT be higher than the filler neck (see Figure 7).
7. Install the fuel cap by rotating clockwise until you hear a click, indicating the cap is completely installed.

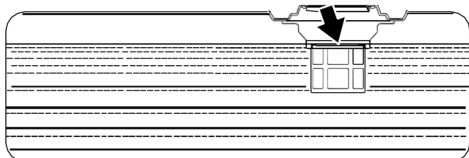


Figure 7 - Maximum Gasoline Fill Level

⚠ CAUTION ⚠

Avoid prolonged skin contact with petrol. Avoid prolonged breathing of petrol vapors.

Before attempting to start the generator, verify the following:

- The engine is filled with engine oil.
- The generator is situated in a proper location.
- The generator is on a dry surface.
- All loads are disconnected from the generator.
- The generator is properly grounded.

⚠ DANGER ⚠

Never use the generator in a location that is wet or damp. Never expose the generator to rain, snow, water spray or standing water while in use. Protect the generator from all hazardous weather conditions. Moisture or ice can cause a short circuit or other malfunction in the electrical circuit.

Never operate the generator in an enclosed area. Engine exhaust contains carbon monoxide. Only operate the generator outside and away from windows, doors and vents.

NOTICE

The engine is equipped with a low oil shutdown switch. If the oil level becomes low, the engine may shut down and not start until the oil is filled to the proper level. Poor oil quality may interfere with the operation of the low oil shutdown switch.

The owner of the generator is responsible to ensure the proper oil level is maintained during the operation of the generator. Failure to maintain the proper oil level can result in engine damage.

Let engine stabilize and warm up for a few minutes before adding load.

OPERATION

GENERATOR SET UP

PLANNING THE POWER LOAD

Plan your power load so that you do not exceed the generator's rated capacity. To calculate the running and starting wattage requirements for the devices you will be powering.

SET UP AS A PORTABLE POWER SOURCE

This generator is designed to provide up to its max power (in watts) of electrical power. When using the generator as a portable power source, you can plug electric devices and appliances directly into the generator's electrical outlets.

Make sure you plug each electrical device/appliance into the correct generator outlet based on the device's plug configuration and voltage/amperage rating. Never exceed the amperage rating of an outlet. Note: You must not overload the generator. Overloading may cause serious damage to the generator and attached electrical devices.

SET UP AS A BUILDING BACKUP

For this application, you must arrange for a licensed electrician to connect the generator to your buildings electrical system via the installation of an approved transfer switch. The transfer switch must be installed in accordance with building electrical code and guidelines supplied by your power company.

A transfer switch does the following:

- Safely connects the generator to your building's electrical system by isolating your generator from your utility company's power lines.
- Connects your generator to a critical subset of your building's circuits that are needed for emergency power needs.

DANGER

A transfer switch must be installed in order to isolate your generator from the utility power grid. If your generator is NOT properly isolated from the utility system, serious hazards will arise.

When your generator is running, its output will back feed into the utility power line and transformer that are normally used to provide you with power. The transformer will step up the current to the normal line voltage. An unsuspecting utility line worker working on what he thinks is a deactivated line could be electrocuted.

If your generator is connected (running or not) when utility power is restored, your generator will be destroyed. It could also explode or cause fire.

NOTICE

Regardless of whether you use your generator as a back-up power source connected to a building or as a portable power source, you must not overload the generator. Overloading may cause serious damage to the generator and attached electrical devices.

If your generator will be connected to your building's electrical system, it **MUST ALWAYS** be isolated from the utility power grid with a approved transfer switch installed by a licensed electrician in compliance with all applicable building and electrical codes and in accordance with guidelines supplied by your power company. *continued over page*

OPERATION

NOTICE

There may be Federal or State Occupational Safety and Health Administration (OSHA) regulations, local codes, or ordinances that apply to the intended use of the generator. Please consult a qualified electrician, electrical inspector, or the local agency having jurisdiction.

- In some areas, generators are required to be registered with local utility companies.
- If the generator is used at a construction site, there may be additional regulations that must be observed.

GROUNDING THE GENERATOR

⚠ WARNING ⚠

In order to avoid electrical accidents, all connections to the distribution panel must be carried out by qualified technicians. Incorrect connections can harm people and damage the generator.

Operating the generator when it's not properly grounded can result in electrical shock.

Standard generators are protected by electrical separators. This equipment has a thermic protection device and/or a magne to thermic device to protect against a surge of current, overloading and short-circuiting. In these cases the Generator should under no circumstances be earthed using the terminal "PE" or with any other part of the generator.

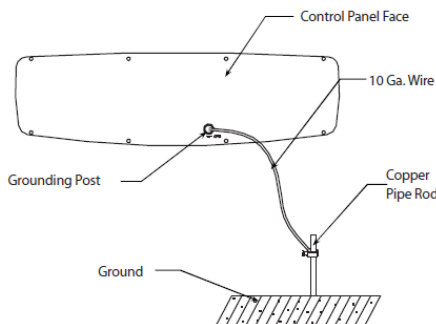
If a licensed electrician installs the generator with a connection to your building's electrical circuit for use as a back-up power system, grounding may alternatively be completed through the building's grounding system. Ask your electrician.

⚠ WARNING ⚠

Grounding is not required when the generator is used as a portable power source. Below grounding method is only needed by a qualified electrician if not connecting through your building's electrical system.

If the generator is not grounded through your building's electrical system, follow the procedure below. This procedure can only be carried out by a licensed electrician.

1. Drive a 3/4" or 1" copper pipe or rod into the ground close to the generator. The pipe/rod must penetrate moist earth - the depth required will be dictated by local soil conditions.
2. Connect an approved ground clamp to the pipe.
3. Run a 10 gauge wire from the clamp to the generator grounding post located on the rear of the generator head.
4. Do not connect the generator grounding post to a water pipe or a ground used by a radio system.



OPERATION

⚠ IMPORTANT ⚠

This generator is fitted with a MEN link cable, the neutral is internally bonded to the generator earth. When a licensed electrician is installing the generator to a building to be used as backup power the MEN must be removed. The MEN link is located is underneath the alternator end cap which is labeled to indicate its location. The MEN link cable clearly labeled as "MEN Link".

EXTENSION CORDS

Extension cords may be used to power devices that are located at a distance from the generator. However, use only Australian approved outdoor - rated, grounded extension cords. Locate the generator in a convenient place and where possible avoid long extension leads and possible damage to leads by pedestrian or vehicular traffic.

Extension leads should be heavy duty with at least 1mm, of appropriate current rating and in any case not less than 1mm cross-section of conductor and must incorporate an earthing conductor to ensure that there is no voltage difference between the generator set and any equipment powered by the generator.

The electrical continuity of the 'earthing' core should be checked periodically from pin to socket to ensure continued electrical safety. Some electrical appliances, e.g. portable drills, are marked or 'double insulated', in which case there should not be an earthing conductor in its mains lead (even though it may have a three-pin plug).

⚠ WARNING ⚠

Use of under sized extension cords can cause electric shock, fire, or damage to connected devices. All extension and appliance cords must be in good condition and not worn, bare, frayed, or otherwise damaged.

Use of damaged electric cords can cause electric shock or fire. Note: If an extension cord becomes hot to the touch, it is overloaded or damaged and must be replaced. ITM is NOT responsible for damage or injury resulting from customer use of inadequate extension cords.

OPERATION

ENGINE SPEED

Engine speed has been factory set to provide safe operation. Tampering with the engine speed adjustment could result in overheating of attachments and could cause a fire.

⚠ WARNING ⚠

The generator must be run at the correct speed in order to produce the proper electrical voltage and frequency. Failure to do so could result in damage to equipment powered by the generator and possible injury to the individual.

CONNECTING LOADS

You will want to be careful when connecting loads so as not to overload the generator, especially if you are powering devices with motors that require a higher starting power load. Instructions are provided below for connecting loads when you are using the generator as a portable power source.

⚠ WARNING ⚠

Do not overload generator. Make sure that combined starting and running loads do not exceed rated capacity of generator. Overloading the generator can cause damage to the generator and attached electrical devices and may result in fire.

240V AC CONNECTION

Connect electrical loads one at a time according to the following instructions:

1. Allow engine to reach operating speed by allowing it to warm up for approximately 5 minutes before connecting electrical devices.
2. Check the devices to be connected is turned "OFF" before connecting them to the AC outlets.
3. After engine is warmed up, begin by connecting the items that require the highest wattage first.

The recommended sequence is as follows:

1. Connect items with motors such as refrigerators, freezers, air conditioners, or small hand tools, one at a time.
2. Let each motor stabilize before connecting the next device.
3. Connect any lights you are planning on powering.
4. Connect voltage sensitive equipment such as electronics via surge protectors. Plug devices such as TV's, computers and microwaves into a voltage surge protector, then plug the surge protector into the generator.

12V DC CONNECTION

The generator is fitted with a socket outlet specifically for connection to a lead acid battery for charging. The output voltage is 12V with maximum output current of 8.3A. The generator will charge lead acid batteries of various sizes from small to large.

DO NOT attempt to charge Nicad, Nickel Metal hybrid, or lithium type batteries. ONLY use provided charger cable.

OPERATION

CHARGING A BATTERY

⚠ WARNING ⚠

It's suggested to wear protective clothing, gloves and eye protection when handling and working with lead acid batteries. For operators with pacemakers or similar medical devices and conditions, it is recommended not to attempt the following procedure.

DO NOT attempt to charge a lead acid battery in confined areas. Ensure the charging process takes place in an area where there is fresh air circulating.

Remove the battery from the car, boat or any other device. The battery **MUST** be totally isolated from any other circuitry. After connection to the battery, **RECHECK** to ensure the connections are as below.

- Insert the T-shaped plug to the generator with the opposite end of the cable connected to the battery.
- Connect the positive (+) alligator clip (red) to the positive (+) terminal on the battery.
- Connect the negative (-) alligator clip (black) to the negative (-) terminal on the battery.
- Start the generator and allow the generator to warm up.
- Check the DC reset button is pressed inward (ON position).

The battery charging process is now underway. To disconnect the battery on charge, **STOP THE ENGINE** and remove the plug from the generator socket and disconnect the cable clamps from the battery, in that order.

Note: The battery charging socket should only be used while the 240V AC outlets are **NOT** being used. If the battery was originally in a low level of charge, the battery will take many hours to recharge fully. The time frame will depend on the size of the battery.

⚠ WARNING ⚠

DO NOT leave battery charging unattended. Charging battery for a long period of time can damage the battery once the battery is full.

Over-charging or over-heating can damage the battery, the water and acid solution can boil and leak out of the battery.

OPERATION

⚠ WARNING ⚠

NEVER exceed the rated wattage capacity of your generator. OVERLOADING may cause SERIOUS DAMAGE to the generator and attached electrical devices and may result in fire.

Your generator MUST BE SIZED PROPERLY to provide both the running and starting (surge) wattage of the devices you will be powering. Before using your generator, determine the running and starting wattage requirements of all the electrical devices you will be powering simultaneously. Following below 4 simple steps and example on the right:

- Step 1. Determine the tools and appliances you want to power at the same time
- Step 2. List the start up and running power usage (Watts) for each product
- Step 3. Add the total power usage and add 10% as a safety net
- Step 4. Choose a generator with a rated and maximum power that equals or exceeds your totals. In this case a generator with a rated power of at least 3108W and a maximum power output greater than 7233W would be required.

PRODUCT	RUNNING	START UP
1HP Water Pump	750W	4500W
Lights	75W	75W
Table saw	2000W	2000W
Total	2825W	6575W
→10%	3108W	7233W

STARTING POWER CONSUMPTION

Electronic appliances and brushed motors generally will not draw more than running Watts at start up. Induction motors in equipment like air conditioners, welders, water pumps and compressors can draw 2 to 5 times their running power to start. Please consult your equipment's rating label, manual or the manufacturer to confirm specific requirement. If only the running wattage is given on the nameplate for a device with an electric motor, the starting wattage can be approximated to be three to five times the running wattage. Estimates for the running wattage requirements for common devices are listed in the table below. Guidance for starting wattages is provided in the table's footnotes. To size your generator correctly you need to use Watts - here are some useful calculations:

Watts = Volts x Amps Example 240 Volts x 5 Amps = 1200 Watts

DEVICE	RUNNING WATTS	DEVICE	RUNNING WATTS	DEVICE	RUNNING WATTS
Air conditioner (12,000 BTU)	1700 (a,b)	Freezer	800 (b)	Oven	4500
Battery charger (20 Amp)	500	Hair dryer	1200	Paint sprayer, Airless (1/3 HP)	600 (a)
Belt sander (3")	1000	Hand drill (1")	1100	Paint sprayer, Airless (handheld)	150
Chain saw	1200	Hand drill (3/8")	500	Radio	200
Circular saw(6½")	2000 (a,b)	Hedge trimmer	450	Refrigerator	600 (b)
Coffee maker	1800 (a,b)	Home computer	150	Slow cooker	200
Compressor (1 HP)	1400 (a,b)	Kettle	2400	Submersible pump (1-1/2 HP)	2800 (a)
Compressor (3/4 HP)	1800 (a)	Jet pump	800 (a)	Submersible pump (1 HP)	2000 (a)
Compressor (1/2 HP)	1400 (a)	Lawn mower	1200	Submersible pump (1/2 HP)	1500 (a)
Curling iron	700	Light bulb (100 Watt)	100	Sump pump	600 (a)
Dishwasher	1200	Microwave oven	700	Television	500
Edge trimmer	500	Milk cooler	1100 (a)	Toaster	1000
Electric nail gun	1200	Oil burner on furnace	300	Vacuum cleaner	250
Electric range (1 element)	1500	Oil-red space heater (140,000 Btu)	400	Water heater	3000
Electric skillet	1250	Oil-red space heater (85,000 Btu)	225		
Furnace fan (1/3 HP)	1200 (a)	Oil-red space heater (30,000 Btu)	150		

(a) Hard-starting motors require 3-5 times the rated running watts (b) For extremely hard to start loads such as air conditioners and air compressors, consult the equipment dealer to determine max wattage.

OPERATION

STARTING THE ENGINE

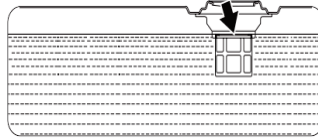
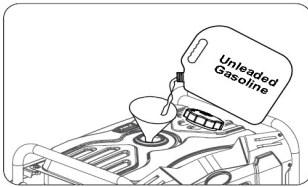
PRE-OPERATION CHECK

1. Check that all shields and covers are in place, and all nuts, bolts, and screws are tightened.
2. Check the engine oil level. Add oil if low. Do not overfill. Running the engine without sufficient oil can cause unreparable damage.



Fill oil to the bottom lip of the dipstick

3. Check fuel level. Add fuel if low (fresh unleaded RON 91 recommended). Starting with a full tank will help to eliminate or reduce operating interruptions for refuelling. Check fuel system components and lines for signs of leak.

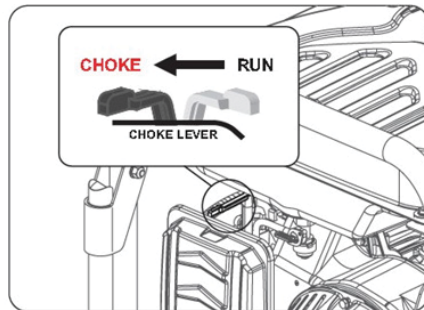
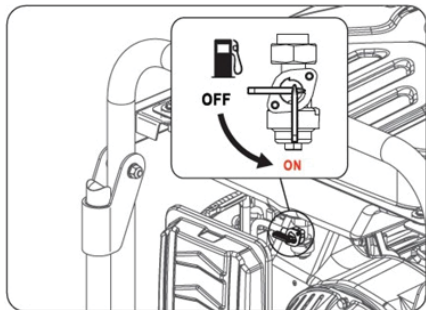


4. Check battery level. If the battery level is unable to start the engine, charge it with the 12V charger included in the package.

OPERATION

TO START THE ENGINE

1. Disconnect all loads to the generator. Turn off the master switch to ensure that no electrical current is connected to the generator.
2. Turn the fuel valve lever to the ON position. Wait for a minute for the fuel to enter to the carburettor (for first time use).
3. For cold engine, move choke lever to full choke position. To restart a warm engine, move choke lever to half choke or to RUN position.



USING KEY START TO START THE ENGINE

1. Turn the engine switch to the START position and hold it there until the engine starts. Note that when the motor is started for the very first time, it may require a number of attempts to start until the fuel has travelled from the tank to the motor.
2. Once you hear the engine operating, release the key to allow the position to move from START to ON position.
3. Move the choke lever back to RUN position.

USING RECOIL START

1. Using recoil start to start the engine- Turn the engine switch to the ON position. Pull the starter grip lightly until you feel the resistance, then pull the starter cord out briskly and rapidly. Allow starter cord to return slowly.
2. When engine starts, move choke lever slowly to the RUN position.
3. Under long, continuous-run operating conditions, be prepared to check the fuel level through the fuel gauge on the top. Never refuel when the generator is in operation.

⚠ WARNING ⚠

A running engine is hot enough to ignite fuel. Never add fuel or remove gas cap if engine is running or still hot. Let cool at least 2 minutes. Check engine oil level each time you refuel. Change oil after the first 20 operating hours and at least every 50 operating hours thereafter.

Never open fuel cap while engine is running. Hot fuel can spray over face and body. Hearing can be damaged from prolonged, close-range exposure to the type of noise produced by this generator. The use of ear plugs or other hearing protection device is recommended for a person working within 4-6 metres of the running generator.

Loose or dangling apparel can become entangled in moving parts. Metal jewellery can conduct electricity. Never wear jewellery or loose-fitting clothing when operating the generator.

MAINTENANCE

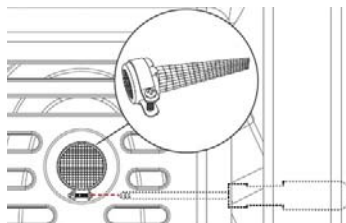
MAINTENANCE SCHEDULE - AUTHORISED ITM SERVICE DEALER PERFORMED

Maintenance Item	After 100 Hour of Use or Every 6 Months	After 300 Hours of Use or Every Year
Valve Clearance	-	Check/Adjust
Fuel Filter	Check/Adjust	-
Idle Speed	-	Check/Adjust

CLEAN & INSPECT SPARK ARRESTOR

Depending on the fuel used, the type and the amount of lubricant used, and/or your operating conditions, the exhaust part and muffler may become blocked with carbon deposits. If you notice power loss, you may need to remove these deposits to restore performance.

- Allow the engine to cool complete before servicing the spark arrestor.
- Remove the spark arrestor, check and clean with a wire brush.
- Replace spark arrestor if it's damaged.



1. Once the cover is removed, locate the screw on the tip of the muffler and remove. Pull the spark arrestor out of the muffler. (see Figure 15).

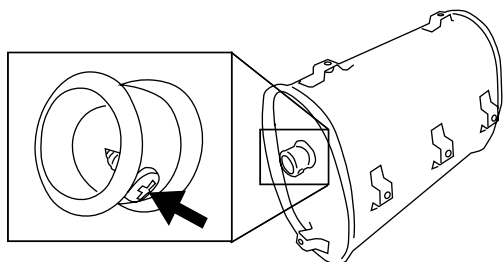


Figure 15: Remove spark arrestor

2. If the spark arrestor screen shows signs of wear (rips, tears or large openings in the screen), replace the spark arrestor screen.
3. If screen is not torn then clean using a wire brush, commercial solvent, or compressed air. Remove any dirt and debris that may have collected on the spark arrestor screen (see Figure 16).

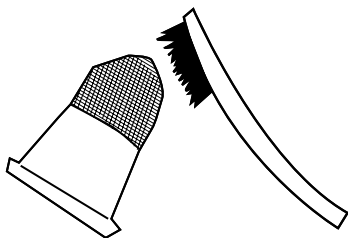
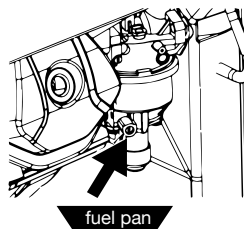


Figure 16: Clean spark arrestor

4. Install the spark arrestor back into the muffler. Make sure to fully push it in so that it is tight on the tip of the muffler.
5. Replace the muffler cover and tighten all 6 screws.

DRAINING CARBURETOR FLOAT BOWL

1. Make sure the generator is off and you are away from any open flames.
2. Place pan (or suitable container) under the carburetor assembly.
3. Loosen screw at bottom of the bowl and allow gas to drain out.
4. After all the gas has drained out, tighten the screw.



fuel pan

MAINTENANCE

ENGINE OIL MAINTENANCE

Engine Oil Specification

1. Only use the engine oil specified in Figure 17.
2. Only use 4-stroke/cycle engine oil. NEVER USE 2-STROKE/CYCLE OIL. Synthetic oil is an acceptable substitute for conventional oil.

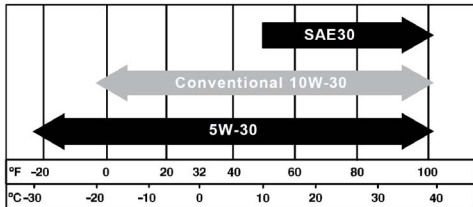


Figure 17 - Recommended Oil

NOTICE

Always maintain proper engine oil level. Failure to maintain proper engine oil level could result in severe damage to the engine and/or shorten the life of the engine. Always use the specified engine oil. Failure to use the specified engine oil can cause accelerated wear and/or shorten the life of the engine.

Engine oil level should be checked before every use.

1. Always operate or maintain the generator on a flat surface.
2. Stop engine if running.
3. Let engine sit and cool for several minutes (allow crankcase pressure to equalise).
4. With a damp rag, clean around the oil fill plug/dipstick.
5. Remove oil fill plug/dipstick (see Figure 18 below).

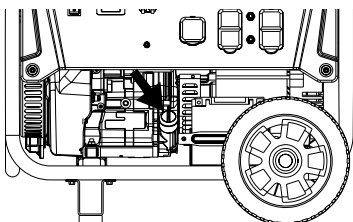


Figure 18 - Oil Fill Plug/Dipstick

6. Check oil level: When checking the engine oil, remove the oil fill plug/dipstick and wipe it clean. Thread the oil fill plug/dipstick all the way back in and then remove and check the oil level on the oil fill plug/dipstick.
7. **Acceptable Oil Level** - Oil is visible on the crosshatches between the H and L lines on the oil fill plug/dipstick (see Figure 19).
8. **Low Oil** - Oil is below the L line on the oil fill plug/dipstick.

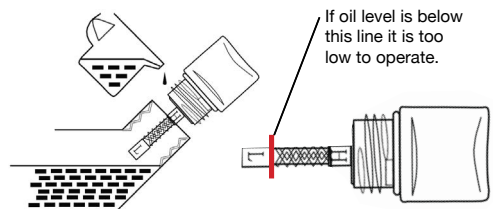


Figure 19 - Checking Oil Level

ADDING ENGINE OIL

1. Always operate or maintain the generator on a flat surface.
2. Stop engine if running.
3. Let engine sit and cool for several minutes (allow crankcase pressure to equalise).
4. Thoroughly clean around the oil fill plug/dipstick.
5. Remove oil fill plug/dipstick and wipe clean.
6. Select the proper engine oil as specified in Figure 17.
7. Using the supplied funnel, slowly add engine oil to the engine. Stop frequently to check the level to avoid overfilling.
8. Continue to add oil until the oil is at the correct level. See Figure 19.
9. Replace the oil fill plug/dipstick.

MAINTENANCE

CHANGING ENGINE OIL

1. Always operate or maintain the generator on a flat surface.
2. Stop the engine.
3. Let engine sit and cool for several minutes (allow crankcase pressure to equalise).
4. Place oil pan (or suitable container) under the oil drain plug (see Figure 20).
5. With a damp rag, thoroughly clean around the oil drain plug.
6. Remove the oil drain plug (see Figure 20). Once removed, place the oil drain plug on a clean surface.

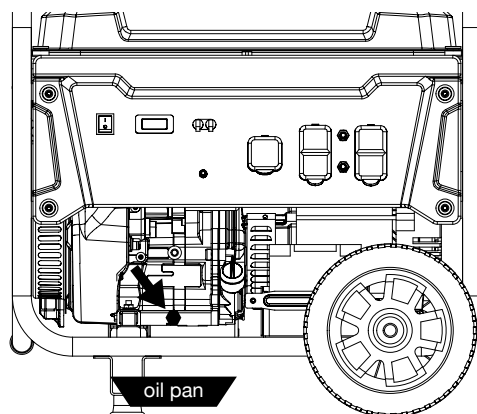


Figure 20 - Oil Drain Plug

7. Allow oil to completely drain.
8. Replace oil drain plug.
9. Fill crankcase with oil following the steps outlined in Adding Engine Oil on page 21.

NOTICE

Never dispose of used engine oil by dumping the oil into a sewer, on the ground, or into ground water or waterways. Always be environmentally responsible. Follow the guidelines of the EPA or other governmental agencies for proper disposal of hazardous materials. Consult local authorities or reclamation facility.

⚠ WARNING ⚠

Never use petrol or other flammable solvents to clean the air filter. Use only household detergent soap to clean the air filter.

Cleaning the Air Filter

The air filter must be cleaned after every 50 hours of use or 3 months (frequency should be increased if generator is operated in a dusty environment).

1. Turn off the generator and let it cool for several minutes if running.
2. Move the generator to a flat, level surface.
3. Unclip the clips on the top and bottom of the air filter cover (Figure 21).

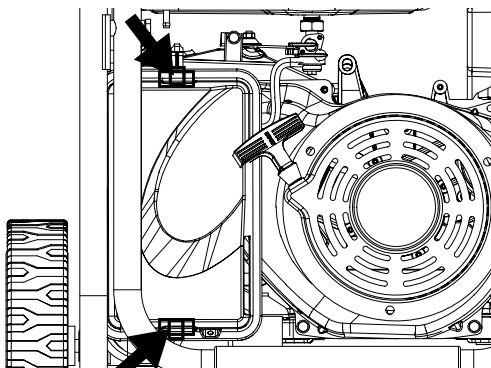


Figure 21 - Unclip air filter

4. Remove the black coarse air filters.
5. Wash the foam air filter elements by submerging the elements in a solution of household detergent soap and warm water. Slowly squeeze the foam to thoroughly clean.

NOTICE

NEVER twist or tear the foam air filter element during cleaning or drying. Only apply slow but firm squeezing action.

6. Rinse in clean water by submerging the air filter elements in fresh water and applying a slow squeezing action.

MAINTENANCE**NOTICE**

Never dispose of soap cleaning solution used to clean the air filter by dumping the solution into a sewer, on the ground, or into ground water or waterways. Always be environmentally responsible. Follow the guidelines of the EPA or other governmental agencies for proper disposal of hazardous materials. Consult local authorities or reclamation facility.

7. Dispose of used soap cleaning solution properly.
8. Dry the air filter elements by again applying a slow firm squeezing action.
9. Once the air filters are dry, coat the air filters with clean engine oil (see Figure 22).

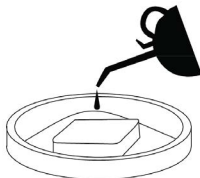


Figure 22

10. Squeeze the filters to remove any excess oil.
11. Install the filters back into the unit. Make sure the gray (fine) air filter goes in first followed by the black (coarse) air filter on the outside.
12. Install the air filter cover and secure the air filter assembly.

SPARK PLUG MAINTENANCE

The spark plug must be checked and cleaned after every 100 hours of use or 6 months and must be replaced after 300 hours of use or every year.

1. Stop the generator and let it cool for several minutes if running.
2. Move the generator to a flat, level surface.
3. Remove the spark plug boot by firmly pulling the plastic spark plug boot handle directly away from the engine (see Figure 23).

NOTICE

Never apply any side load or move the spark plug laterally when removing the spark plug. Applying a side load or moving the spark plug laterally may crack and damage the spark plug boot.

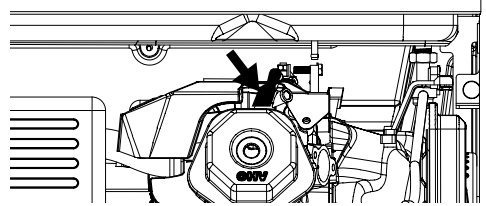
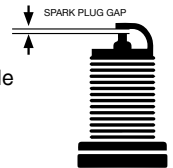


Figure 23 - Remove Spark Plug Boot

4. Clean area around the spark plug.
5. Using the 13/16" spark plug socket wrench provided, remove the spark plug from the cylinder head.
6. Place a clean rag over the opening created by the removal of the spark plug to make sure no dirt can get into the combustion chamber. Inspect the spark plug for:
 - Cracked or chipped insulator
 - Excessive wear
 - Spark plug gap (the acceptable limit of 0.027–0.032 in. [0.70 – 0.80 mm]).

**NOTICE**

Use only recommended spark plugs when servicing. The manufacturer is not responsible for engine damage when using spark plugs not recommended by the manufacturer.

7. Install the spark plug by carefully following the steps outlined below:
 - a. Carefully insert the spark plug back into the cylinder head. Hand-thread the spark plug until it bottoms out.
 - b. Using the 13/16" spark plug socket wrench provided, turn the spark plug to ensure it is fully seated.
 - c. Replace the spark plug boot, making sure the boot fully engages the spark plug's tip.

Recommended Spark Plug Replacement:
 NGK: (1034) BP7ES (Replacement)
 Torch: F7TC (OE Spark Plug)

MAINTENANCE

CHECKING AND ADJUSTING VALVE LASH

⚠ CAUTION ⚠

Checking and adjusting valve lash must be done when the engine is cold.

1. Remove the rocker arm cover and carefully remove the gasket. If the gasket is torn or damaged, it must be replaced.
2. Remove the spark plug so the engine can be rotated more easily.
3. Rotate the engine to top dead centre (TDC) of the compression stroke. Looking through the spark plug hole, the piston should be at the top.
4. Both the rocker arms should be loose at TDC on the compression stroke. If they are not, rotate the engine 360°.
5. Insert a feeler gauge between the rocker arm and the push rod and check for clearance (see Figure 24). See Table 3 for valve lash specifications.

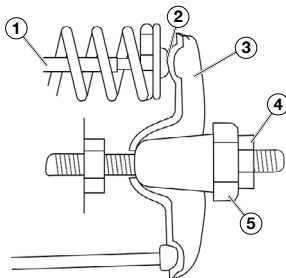


Figure 24
(1) Push Rod, (2) Feeler Gauge Area
(3) Rocker Arm, (4) Jam Nut, (5) Adjusting Nut

	Intake Valve	Exhaust Valve
Valve Lash	0.0035 ± 0.0043 in (0.09 ± 0.11 mm)	0.0043 ± 0.0051 in (0.11 ± 0.13 mm)
Bolt Torque	8-12 Nm	8-12 Nm

6. If an adjustment is required, hold the adjusting nut and loosen the jam nut.
7. Turn the adjusting nut to obtain the correct valve lash. When the valve lash is correct, hold the adjusting nut and tighten the jam nut to 106 in-lb (12 Nm).
8. Recheck the valve lash after tightening the jam nut.
9. Perform this procedure for both the intake and exhaust valves.
10. Install the rocker arm cover, gasket and spark plug.

BATTERY SERVICE

⚠ WARNING ⚠

Do not charge for over 8 hours. Leaving the charger plugged in indefinitely could overcharge the battery and lead to battery failure.

To ensure the battery remains charged, the generator should be started every 2 to 3 months and run for a minimum of 15 minutes or a charger should be plugged into the generator and the generator should be charged overnight. Make sure the positive and negative leads are disconnected from the battery. Connect the lead from the charger to the corresponding terminals on the battery and plug the charger into a 240V power outlet.

⚠ WARNING ⚠

When storing the generator for extended periods, to reduce the chance of completely draining the battery power ensure the leads are disconnected from the battery.

MAINTENANCE

BATTERY REPLACEMENT

1. Remove the spark plug wire from spark plug.
2. Loosen and remove the bolt on the battery hold down plate and swing the plate out.
3. Tip the battery forward slightly to access battery cables.
4. Disconnect the black negative (-) battery cable from the battery first.
5. Disconnect the red positive (+) battery cable second and remove the battery.

NOTICE

Never apply any side load or move the spark plug laterally when removing the spark plug. Applying a side load or moving the spark plug laterally may crack and damage the spark plug boot.

6. Install the new battery into the generator frame. Battery must meet specifications in table below to work properly.
7. Connect the red positive (+) battery cable to the battery first.
8. Connect the black negative (-) battery cable to the battery second.
9. Install the battery hold-down plate using the nuts removed in step 2.
10. Install the spark plug wire onto spark plug.

CLEANING THE GENERATOR

It is important to inspect and clean the generator after every use.

Clean All Engine Air Inlet and Outlet Ports

Make sure all engine air inlet and outlet ports are clean of any dirt and debris to ensure the engine does not run hot.

Clean All Engine Cooling Fins

Use a damp rag and a brush to loosen and remove all dirt on or around the engine's cooling fins.

Clean All Alternator Cooling Air Inlets and Exhaust Ports

Make sure the cooling air inlets and exhaust ports of the alternator are free of any debris and obstructions. Use a vacuum cleaner to remove dirt and debris stuck in the cooling air inlets and exhaust ports.

General Cleaning of the Generator

Use a damp rag to clean all remaining surfaces.

STORING THE GENERATOR

⚠ WARNING ⚠

Never store a generator with fuel in the tank indoors or in a poorly ventilated area where the fumes can come in contact with an ignition source. Always disconnect the positive cable from the battery prior to storage.

NOTICE

Petrol stored for as little as 60 days can go bad, causing gum, varnish and corrosive buildup in fuel lines, fuel passages and the engine. This corrosive buildup restricts the flow of fuel, preventing an engine from starting after a prolonged storage period.

Proper care should be taken to prepare the generator for any storage.

1. Make sure the Engine Switch is switched to STOP so the generator does not draw power from battery.
2. Clean the generator as outlined in Cleaning the Generator.
3. Drain all petrol from the fuel tank as best as possible.
4. With the fuel shut off valve open, start the engine and allow the generator to run until all the remaining petrol in the fuel lines and carburetor is consumed and the engine shuts off.
5. Close the fuel shut off valve.
6. Drain the remaining gas in the carburetor float bowl outlined in Draining Carburetor Float Bowl on page 20.
7. Change the oil (see Changing Engine Oil on page 22).
8. Remove the spark plug (see Spark Plug Maintenance on page 23) and place about 1 tablespoon of oil in the spark plug opening. While placing a clean rag over the spark plug opening, slowly pull there coil handle to allow the engine to turn over several times. This will distribute the oil and protect the cylinder wall from corroding during storage.
9. Replace the spark plug (see Spark Plug Maintenance on page 23).
10. Move the generator to a clean, dry place for storage.

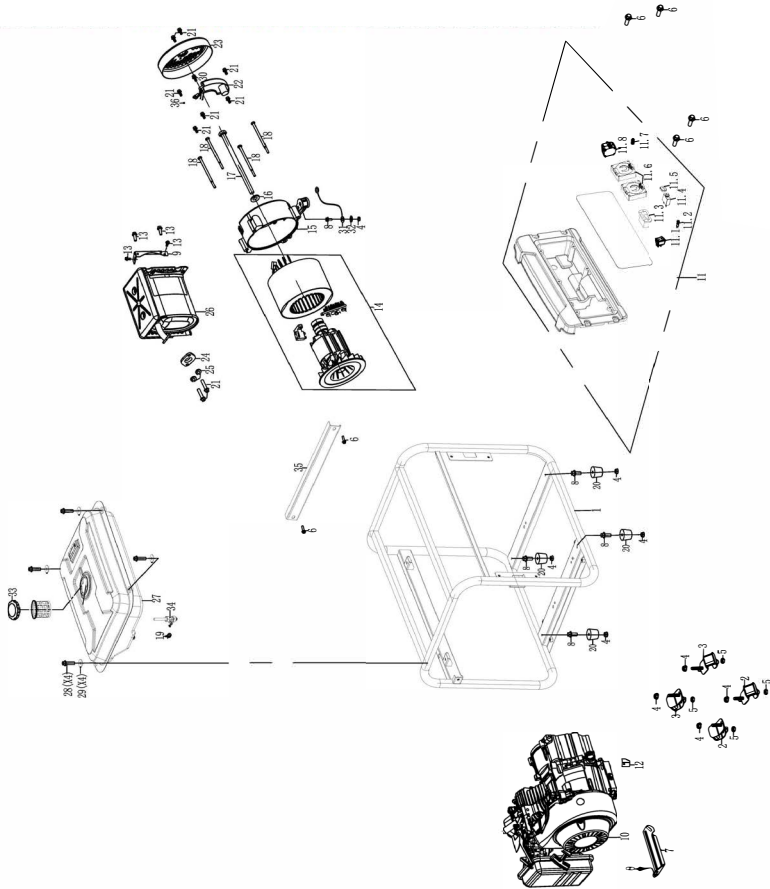
TROUBLE SHOOTING

⚠ WARNING ⚠

Before attempting to service or troubleshoot the generator, the owner or service technician must first read the owner's manual and understand and follow all safety instructions. Failure to follow all instructions may result in conditions that can lead to voiding of the EPA certification or product warranty, serious personal injury, property damage or even death.

PROBLEM	POTENTIAL CAUSE	SOLUTION
Engine is running, but no electrical output	1. Circuit breakers are tripped.	1. Reset the circuit breakers and check for overload condition.
	2. The power cord's plug connector is not fully engaged in the generator's outlet.	2. Verify plug connector is firmly engaged in the generator's outlet. If using the 240V outlet, make sure plug connector is rotated 1/4 turn in the clockwise direction.
	3. Faulty or defective power cord	3. Replace power cord.
	4. Faulty or defective electrical appliance	4. Try connecting a known good appliance to verify the generator is producing electrical power.
	5. GFCI outlet is tripped	5. Press the reset button on the GFCI outlet.
	6. If trying 1-5 above does not solve the problem, the cause might be the generator has a fault.	6. Take the generator to your nearest authorised service dealer.
Engine will not start or remain running while trying to start.	1. Fuel shutoff valve is in the OFF position.	1. Move the fuel shut off valve to the ON position.
	2. Generator is out of petrol.	2. Add petrol to the generator.
	3. Fuel flow is obstructed.	3. Inspect and clean fuel delivery passages.
	4. Starting battery may have insufficient charge	4. On electric start models only. Check battery output and charge battery as necessary.
	5. Dirty air filter	5. Check and clean the air filter.
	6. Low oil level shut down switch is preventing the unit from starting.	6. Check oil level and add oil if necessary.
	7. Spark plug boot is not fully engaged with the spark plug tip.	7. Firmly push down on the spark plug boot to ensure the boot is fully engaged
	8. Spark plug is faulty.	8. Remove and check the spark plug. Replace if faulty.
	9. Dirty/plugged spark arrester	9. Check and clean the spark arrester.
	10. Stale fuel	10. Drain fuel and replace with fresh fuel.
	11. If trying 1-11 above does not solve the problem, the cause might be the generator has a fault.	11. Take the generator to your nearest authorised service dealer.
Generator suddenly stops running.	1. Generator is out of fuel.	1. Check fuel level. Add fuel if necessary.
	2. The low oil shut down switch has stopped the engine.	2. Check oil level and add oil if necessary.
	3. Too much load	3. Restart the generator and reduce the load.
	4. If trying 1-3 above does not solve the problem, the cause might be a fault in the generator.	4. Take the generator to your nearest authorised service dealer.
Engine runs erratic; does not hold a steady RPM.	1. Dirty air filter	1. Clean the air filter.
	2. Applied loads maybe cycling on and off	2. As applied loads cycle, changes in engine speed may occur; this is a normal condition.
	3. If trying 1-3 above does not solve the problem, the cause might be a fault in the generator	3. Take the generator to your nearest authorised service dealer.

NO.	Code	Part name	quantity
1	774405-205	FRAME	1
2	537204	ISOLATOR B	2
3	537201	ISOLATOR A	2
4	50018	NUT M8	6
5	50011	NUT M6	4
6	51386	BELT M8X6	4
7	51387	BELT M6X4	4
8	51327	BOLT M8X2	7
9	520302	MUFFLER BRACKET	1
10	10026210102	ENGINE ASSY DH212	1
11	715311	PANEL COMP	1
11.1	65070H408	FLAME ROLLOUT SWITCH	1
11.2	6227	ENGINE OIL ALARM LAMP	1
11.3	5333	THIEF ACCUMULATOR	1
11.4	504604	STARTER MOTOR	1
11.5	5205	DC SOCKET	1
11.6	5079	AUSTRALIAN SOCKET	1
11.7	6386	GROUND BOLT ASSEMBLY	2
11.8	6504-106605	THE LEADAGE OPEN	1
12	549201	DUSTPROOF SHEET	1
13	61543	BOLT M8X8	4
14	752017	STARTING MOTOR ASSEMBLY	1
15	537205	ISOLATOR	1
16	5881	GASKET BOLT Ø6 5x22x3	1
17	61706	BOLT M6x16S	1
18	61606	BOLT M6x16S	4
19	64403	CLIP FUEL LINE Ø 7.5	1
20	53112	Roll rubber cushion	4
21	61322	BOLT M5X2	7
22	53491	AUTOMATIC VOLTAGE REGULATOR	1
23	53306	END COVER GENERATOR	1
24	53307	STARTER PIPE	1
25	50206	SPRING WASHER Ø6	2
26	705375	MUFFLER COMP	1
27	700270448	FUEL TANK ASSEMBLY	1
28	61307	BOLT M6X25	4
29	98501	WASHER FUEL TANK	4
30	61323	BOLT M5X6	1
31	544501	GROUNDING WIRE	1
32	61002	TOOTH TYPE GASKET 166	1
33	530301	STARTER CAP COMP	1
34	618201	FUEL COCK	1
35	530319-205	BEAM	1
36	64204	SPRING WASHER Ø 5	1

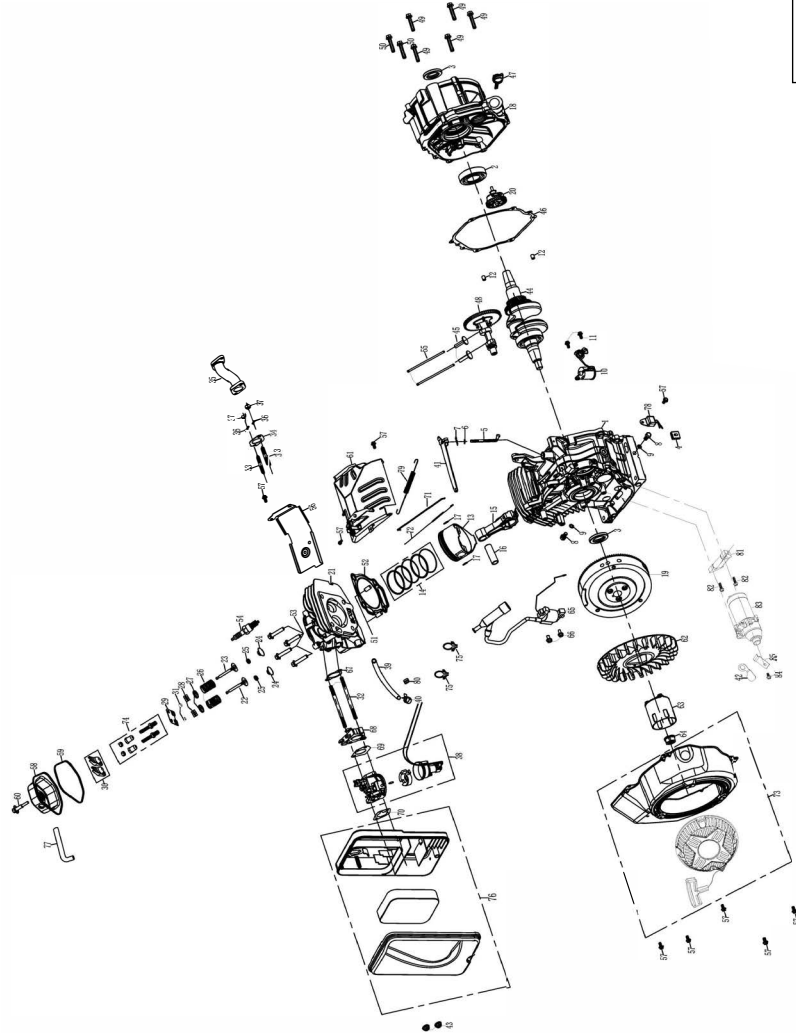


Generator Parts List

Part No.
TM510-2300



NO.	CODE	DESCRIPTION	QTY
1	100000	GENERATOR	1
2	100001	COVER	1
3	100002	WHEEL	2
4	100003	WHEEL NUT	4
5	100004	WHEEL WASH BRUSH	2
6	100005	SMART COUPLER ASSEMBLY	1
7	100006	WHEEL WASH BRUSH	2
8	100007	SMART COUPLER ASSEMBLY	1
9	100008	WHEEL WASH BRUSH	2
10	100009	SMART COUPLER ASSEMBLY	1
11	100010	WHEEL WASH BRUSH	2
12	100011	SMART COUPLER ASSEMBLY	1
13	100012	WHEEL WASH BRUSH	2
14	100013	SMART COUPLER ASSEMBLY	1
15	100014	WHEEL WASH BRUSH	2
16	100015	SMART COUPLER ASSEMBLY	1
17	100016	WHEEL WASH BRUSH	2
18	100017	SMART COUPLER ASSEMBLY	1
19	100018	WHEEL WASH BRUSH	2
20	100019	SMART COUPLER ASSEMBLY	1
21	100020	WHEEL WASH BRUSH	2
22	100021	SMART COUPLER ASSEMBLY	1
23	100022	WHEEL WASH BRUSH	2
24	100023	SMART COUPLER ASSEMBLY	1
25	100024	WHEEL WASH BRUSH	2
26	100025	SMART COUPLER ASSEMBLY	1
27	100026	WHEEL WASH BRUSH	2
28	100027	SMART COUPLER ASSEMBLY	1
29	100028	WHEEL WASH BRUSH	2
30	100029	SMART COUPLER ASSEMBLY	1
31	100030	WHEEL WASH BRUSH	2
32	100031	SMART COUPLER ASSEMBLY	1
33	100032	WHEEL WASH BRUSH	2
34	100033	SMART COUPLER ASSEMBLY	1
35	100034	WHEEL WASH BRUSH	2
36	100035	SMART COUPLER ASSEMBLY	1
37	100036	WHEEL WASH BRUSH	2
38	100037	SMART COUPLER ASSEMBLY	1
39	100038	WHEEL WASH BRUSH	2
40	100039	SMART COUPLER ASSEMBLY	1
41	100040	WHEEL WASH BRUSH	2
42	100041	SMART COUPLER ASSEMBLY	1
43	100042	WHEEL WASH BRUSH	2
44	100043	SMART COUPLER ASSEMBLY	1
45	100044	WHEEL WASH BRUSH	2
46	100045	SMART COUPLER ASSEMBLY	1
47	100046	WHEEL WASH BRUSH	2
48	100047	SMART COUPLER ASSEMBLY	1
49	100048	WHEEL WASH BRUSH	2
50	100049	SMART COUPLER ASSEMBLY	1
51	100050	WHEEL WASH BRUSH	2
52	100051	SMART COUPLER ASSEMBLY	1
53	100052	WHEEL WASH BRUSH	2
54	100053	SMART COUPLER ASSEMBLY	1
55	100054	WHEEL WASH BRUSH	2
56	100055	SMART COUPLER ASSEMBLY	1
57	100056	WHEEL WASH BRUSH	2
58	100057	SMART COUPLER ASSEMBLY	1
59	100058	WHEEL WASH BRUSH	2
60	100059	SMART COUPLER ASSEMBLY	1
61	100060	WHEEL WASH BRUSH	2
62	100061	SMART COUPLER ASSEMBLY	1
63	100062	WHEEL WASH BRUSH	2
64	100063	SMART COUPLER ASSEMBLY	1
65	100064	WHEEL WASH BRUSH	2
66	100065	SMART COUPLER ASSEMBLY	1
67	100066	WHEEL WASH BRUSH	2
68	100067	SMART COUPLER ASSEMBLY	1
69	100068	WHEEL WASH BRUSH	2
70	100069	SMART COUPLER ASSEMBLY	1
71	100070	WHEEL WASH BRUSH	2
72	100071	SMART COUPLER ASSEMBLY	1
73	100072	WHEEL WASH BRUSH	2
74	100073	SMART COUPLER ASSEMBLY	1
75	100074	WHEEL WASH BRUSH	2
76	100075	SMART COUPLER ASSEMBLY	1
77	100076	WHEEL WASH BRUSH	2
78	100077	SMART COUPLER ASSEMBLY	1
79	100078	WHEEL WASH BRUSH	2
80	100079	SMART COUPLER ASSEMBLY	1
81	100080	WHEEL WASH BRUSH	2
82	100081	SMART COUPLER ASSEMBLY	1
83	100082	WHEEL WASH BRUSH	2
84	100083	SMART COUPLER ASSEMBLY	1
85	100084	WHEEL WASH BRUSH	2
86	100085	SMART COUPLER ASSEMBLY	1
87	100086	WHEEL WASH BRUSH	2
88	100087	SMART COUPLER ASSEMBLY	1
89	100088	WHEEL WASH BRUSH	2
90	100089	SMART COUPLER ASSEMBLY	1
91	100090	WHEEL WASH BRUSH	2
92	100091	SMART COUPLER ASSEMBLY	1
93	100092	WHEEL WASH BRUSH	2
94	100093	SMART COUPLER ASSEMBLY	1
95	100094	WHEEL WASH BRUSH	2
96	100095	SMART COUPLER ASSEMBLY	1
97	100096	WHEEL WASH BRUSH	2
98	100097	SMART COUPLER ASSEMBLY	1
99	100098	WHEEL WASH BRUSH	2
100	100099	SMART COUPLER ASSEMBLY	1
101	100100	WHEEL WASH BRUSH	2

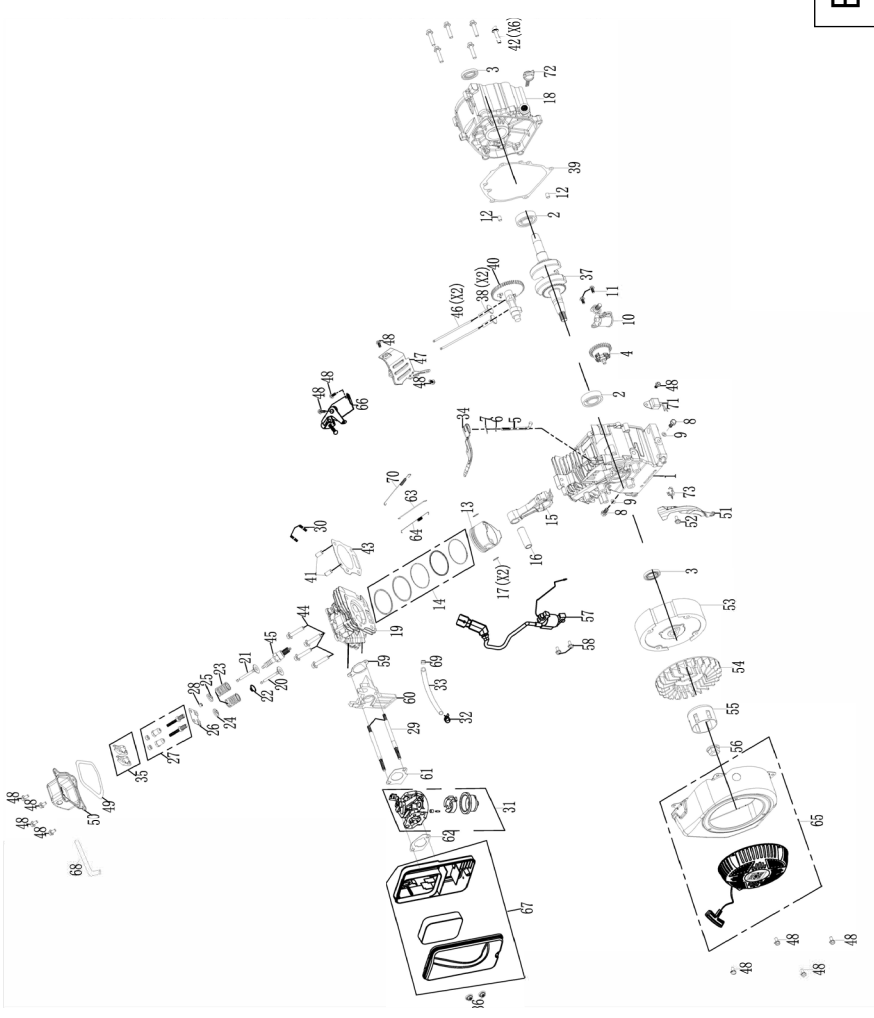


Engine Breakdown

Part No.
TM510-5500



NO.	CODE	PART NAME	QTY
1	24214	FRAMECASE	1
2	24215	FLY WHEEL	1
3	24207	DI. SEAL	2
4	24203	COVER/ASSEMBLY	1
5	24204	WASHER COVER/GRAMP SPRING	1
6	24205	WASHER COVER/GRAMP SPRING	1
7	24206	PULLER	1
8	24207	WASHER/DRAIN FLUID	2
9	24208	WASHER/DRAIN FLUID	2
10	24209	SWITCH/ASSEMBLY OR LEVEL	3
11	24210	SWITCH/ASSEMBLY OR LEVEL	3
12	24201	COVER/ENGINE COVER	2
13	24208	WASHER/DRAIN FLUID	2
14	24209	WASHER/DRAIN FLUID	2
15	24205	WASHER COVER/GRAMP SPRING	1
16	24206	PULLER	1
17	24207	WASHER/DRAIN FLUID	2
18	24208	WASHER/DRAIN FLUID	2
19	24209	WASHER/DRAIN FLUID	2
20	24210	SWITCH/ASSEMBLY OR LEVEL	3
21	24201	COVER/ENGINE COVER	2
22	24202	COVER/ENGINE COVER	1
23	24203	COVER/ASSEMBLY	1
24	24204	WASHER COVER/GRAMP SPRING	1
25	24205	WASHER COVER/GRAMP SPRING	1
26	24206	PULLER	1
27	24207	WASHER/DRAIN FLUID	2
28	24208	WASHER/DRAIN FLUID	2
29	24209	WASHER/DRAIN FLUID	2
30	24210	SWITCH/ASSEMBLY OR LEVEL	3
31	24211	COVER/ENGINE COVER	2
32	24212	COVER/ENGINE COVER	1
33	24213	COVER/ENGINE COVER	1
34	24214	COVER/ENGINE COVER	1
35	24215	FLY WHEEL	1
36	24216	FLY WHEEL	1
37	24217	FLY WHEEL	1
38	24218	FLY WHEEL	1
39	24219	FLY WHEEL	1
40	24220	FLY WHEEL	1
41	24221	FLY WHEEL	1
42	24222	FLY WHEEL	1
43	24223	FLY WHEEL	1
44	24224	FLY WHEEL	1
45	24225	FLY WHEEL	1
46	24226	FLY WHEEL	1
47	24227	FLY WHEEL	1
48	24228	FLY WHEEL	1
49	24229	FLY WHEEL	1
50	24230	FLY WHEEL	1
51	24231	FLY WHEEL	1
52	24232	FLY WHEEL	1
53	24233	FLY WHEEL	1
54	24234	FLY WHEEL	1
55	24235	FLY WHEEL	1
56	24236	FLY WHEEL	1
57	24237	FLY WHEEL	1
58	24238	FLY WHEEL	1
59	24239	FLY WHEEL	1
60	24240	FLY WHEEL	1
61	24241	FLY WHEEL	1
62	24242	FLY WHEEL	1
63	24243	FLY WHEEL	1
64	24244	FLY WHEEL	1
65	24245	FLY WHEEL	1
66	24246	FLY WHEEL	1
67	24247	FLY WHEEL	1
68	24248	FLY WHEEL	1
69	24249	FLY WHEEL	1
70	24250	FLY WHEEL	1
71	24251	FLY WHEEL	1
72	24252	FLY WHEEL	1
73	24253	FLY WHEEL	1
74	24254	FLY WHEEL	1
75	24255	FLY WHEEL	1
76	24256	FLY WHEEL	1
77	24257	FLY WHEEL	1
78	24258	FLY WHEEL	1
79	24259	FLY WHEEL	1
80	24260	FLY WHEEL	1
81	24261	FLY WHEEL	1
82	24262	FLY WHEEL	1
83	24263	FLY WHEEL	1
84	24264	FLY WHEEL	1
85	24265	FLY WHEEL	1
86	24266	FLY WHEEL	1
87	24267	FLY WHEEL	1
88	24268	FLY WHEEL	1
89	24269	FLY WHEEL	1
90	24270	FLY WHEEL	1
91	24271	FLY WHEEL	1
92	24272	FLY WHEEL	1
93	24273	FLY WHEEL	1
94	24274	FLY WHEEL	1
95	24275	FLY WHEEL	1
96	24276	FLY WHEEL	1
97	24277	FLY WHEEL	1
98	24278	FLY WHEEL	1
99	24279	FLY WHEEL	1
100	24280	FLY WHEEL	1



Engine Breakdown

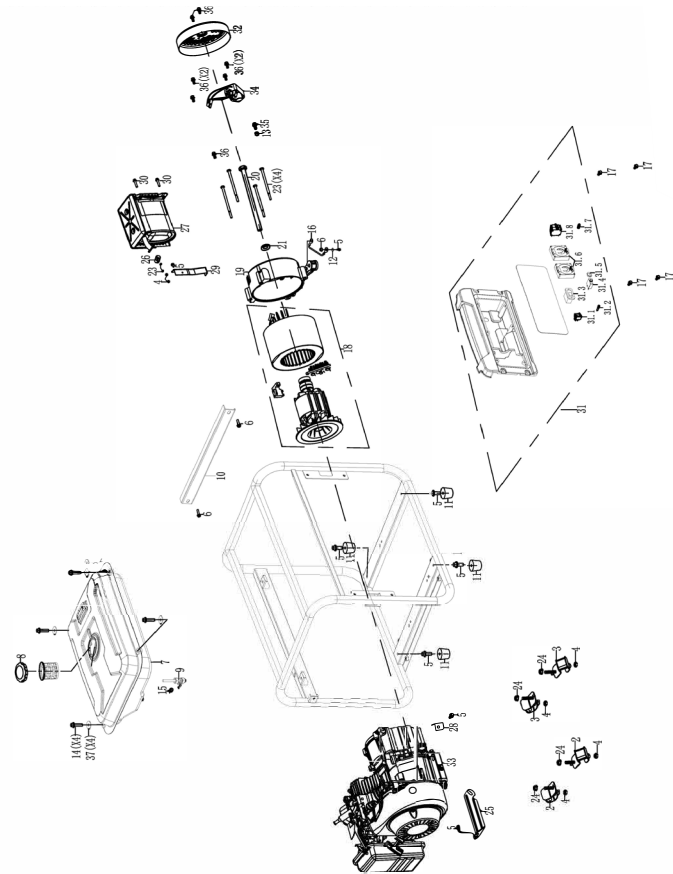
Part No.
TM510-2800



NO	Code	Part name	Quantity
1	774489208	FRAME	1
2	851201	ISOLATOR A	2
3	851204	ISOLATOR B	2
4	80011	NUT M8	6
5	81388	BOLT M8X6	8
6	81390	BOLT M8X6	1
7	700270048	FUEL TANK ASSEMBLY	1
8	819407	FUEL TANK CAP COMP	1
9	818201	FUEL LOCK	1
10	850619-206	ACTIVE TORQUE TULE	1
11	851127	RUBBER DAMPING BRACKET	4
12	851128	COOPER GASKET 06	4
13	85204	SPRING WASHER 05	1
14	81307	BOLT M8X25	4
15	84403	CLIP FUEL LINE Ø7.5	1
16	844301	FRAME WIRE	1
17	81327	BOLT M8X12	4
18	792518	STARTING MOTOR ASSEMBLY	1
19	852103	MOTOR STRAP	1
20	852104	STARTER MOTOR	1
21	86812	GASKET ROTOR BOLT Ø8.5X20.5X3	1
22	842306	SPRING WASHER 0.8	2
23	81688	BOLT M8X155	4
24	80018	NUT M8	4
25	840011	BRACKET AIR CLEANER	1
26	86055	PACKING EXHAUST	1
27	705324	MUFFLER COMP	1
28	85205	WASHER	1
29	83602	MUFFLER BRACKET	1
30	81343	BOLT M8X6	2
31	713311	PANEL COMP	1
31.1	86018408	FLAME ROLL OUT SWITCH	1
31.2	8237	ENGINE OIL ALARM LAMP	1
31.3	8333	TIME ACCUMULATOR	1
31.4	8394604	OVER PROTECTOR	1
31.5	8603	DC SOCKET	1
31.6	8479	AUSTRALIAN SOCKET	2
31.7	8386	GROUND BOLT ASSEMBLY	1
31.8	8604-106605	THE LEAKAGE OPEN	1
32	83106	END COVER GENERATOR	1
33	11002721002	ENGINE ASSY DHT612	1
34	834701	AUTOMATIC VOLTAGE REGULATOR	1
35	81322	BOLT M8X16	2
36	81322	BOLT M8X16	7
37	86801	WASHER, FUEL TANK	4

Generator Parts List

Part No. TM510-2800



QTY	QTY	Part No.	DESCRIPTION
1	1	381026	DIAPHRAGM
1	1	381027	COIL SPARK
1	1	381028	VALVE INTAKE
1	1	381029	VALVE EXHAUST
1	1	381030	VALVE SPRING
1	1	381031	VALVE SPRING RETAINER
1	1	381032	VALVE SPRING PLATE
1	1	381033	VALVE SPRING PLATE WASHER
1	1	381034	VALVE SPRING PLATE WASHER
1	1	381035	VALVE SPRING PLATE WASHER
1	1	381036	VALVE SPRING PLATE WASHER
1	1	381037	VALVE SPRING PLATE WASHER
1	1	381038	VALVE SPRING PLATE WASHER
1	1	381039	VALVE SPRING PLATE WASHER
1	1	381040	VALVE SPRING PLATE WASHER
1	1	381041	VALVE SPRING PLATE WASHER
1	1	381042	VALVE SPRING PLATE WASHER
1	1	381043	VALVE SPRING PLATE WASHER
1	1	381044	VALVE SPRING PLATE WASHER
1	1	381045	VALVE SPRING PLATE WASHER
1	1	381046	VALVE SPRING PLATE WASHER
1	1	381047	VALVE SPRING PLATE WASHER
1	1	381048	VALVE SPRING PLATE WASHER
1	1	381049	VALVE SPRING PLATE WASHER
1	1	381050	VALVE SPRING PLATE WASHER
1	1	381051	VALVE SPRING PLATE WASHER
1	1	381052	VALVE SPRING PLATE WASHER
1	1	381053	VALVE SPRING PLATE WASHER
1	1	381054	VALVE SPRING PLATE WASHER
1	1	381055	VALVE SPRING PLATE WASHER
1	1	381056	VALVE SPRING PLATE WASHER
1	1	381057	VALVE SPRING PLATE WASHER
1	1	381058	VALVE SPRING PLATE WASHER
1	1	381059	VALVE SPRING PLATE WASHER
1	1	381060	VALVE SPRING PLATE WASHER
1	1	381061	VALVE SPRING PLATE WASHER
1	1	381062	VALVE SPRING PLATE WASHER
1	1	381063	VALVE SPRING PLATE WASHER
1	1	381064	VALVE SPRING PLATE WASHER
1	1	381065	VALVE SPRING PLATE WASHER
1	1	381066	VALVE SPRING PLATE WASHER
1	1	381067	VALVE SPRING PLATE WASHER
1	1	381068	VALVE SPRING PLATE WASHER
1	1	381069	VALVE SPRING PLATE WASHER
1	1	381070	VALVE SPRING PLATE WASHER
1	1	381071	VALVE SPRING PLATE WASHER
1	1	381072	VALVE SPRING PLATE WASHER
1	1	381073	VALVE SPRING PLATE WASHER
1	1	381074	VALVE SPRING PLATE WASHER
1	1	381075	VALVE SPRING PLATE WASHER
1	1	381076	VALVE SPRING PLATE WASHER
1	1	381077	VALVE SPRING PLATE WASHER
1	1	381078	VALVE SPRING PLATE WASHER
1	1	381079	VALVE SPRING PLATE WASHER
1	1	381080	VALVE SPRING PLATE WASHER
1	1	381081	VALVE SPRING PLATE WASHER
1	1	381082	VALVE SPRING PLATE WASHER
1	1	381083	VALVE SPRING PLATE WASHER
1	1	381084	VALVE SPRING PLATE WASHER
1	1	381085	VALVE SPRING PLATE WASHER
1	1	381086	VALVE SPRING PLATE WASHER
1	1	381087	VALVE SPRING PLATE WASHER
1	1	381088	VALVE SPRING PLATE WASHER
1	1	381089	VALVE SPRING PLATE WASHER
1	1	381090	VALVE SPRING PLATE WASHER
1	1	381091	VALVE SPRING PLATE WASHER
1	1	381092	VALVE SPRING PLATE WASHER
1	1	381093	VALVE SPRING PLATE WASHER
1	1	381094	VALVE SPRING PLATE WASHER
1	1	381095	VALVE SPRING PLATE WASHER
1	1	381096	VALVE SPRING PLATE WASHER
1	1	381097	VALVE SPRING PLATE WASHER
1	1	381098	VALVE SPRING PLATE WASHER
1	1	381099	VALVE SPRING PLATE WASHER
1	1	381100	VALVE SPRING PLATE WASHER

Engine Breakdown

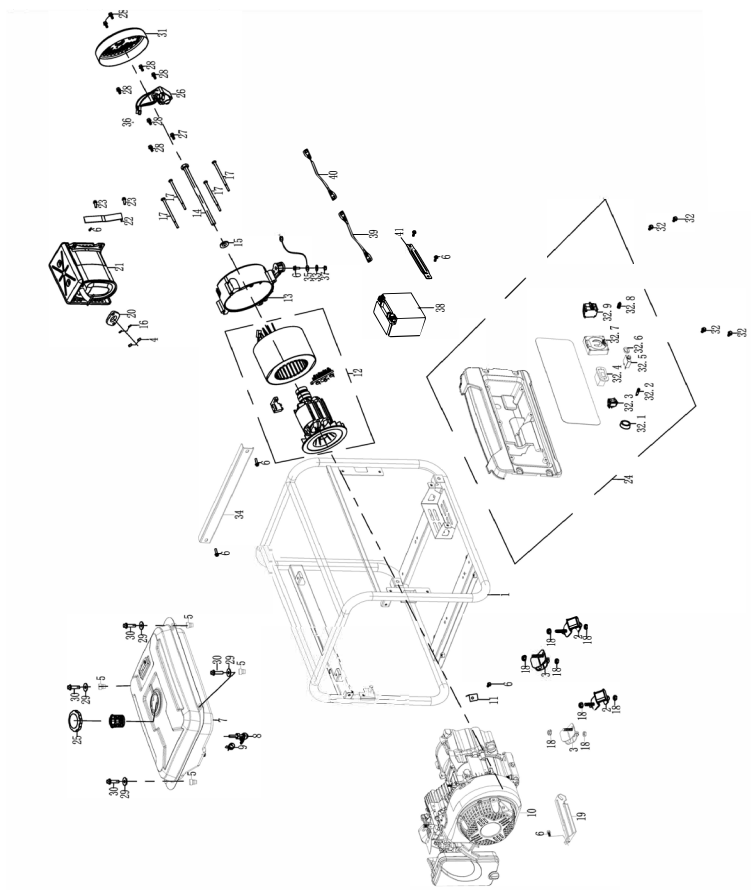
Part No.
TM510-3400



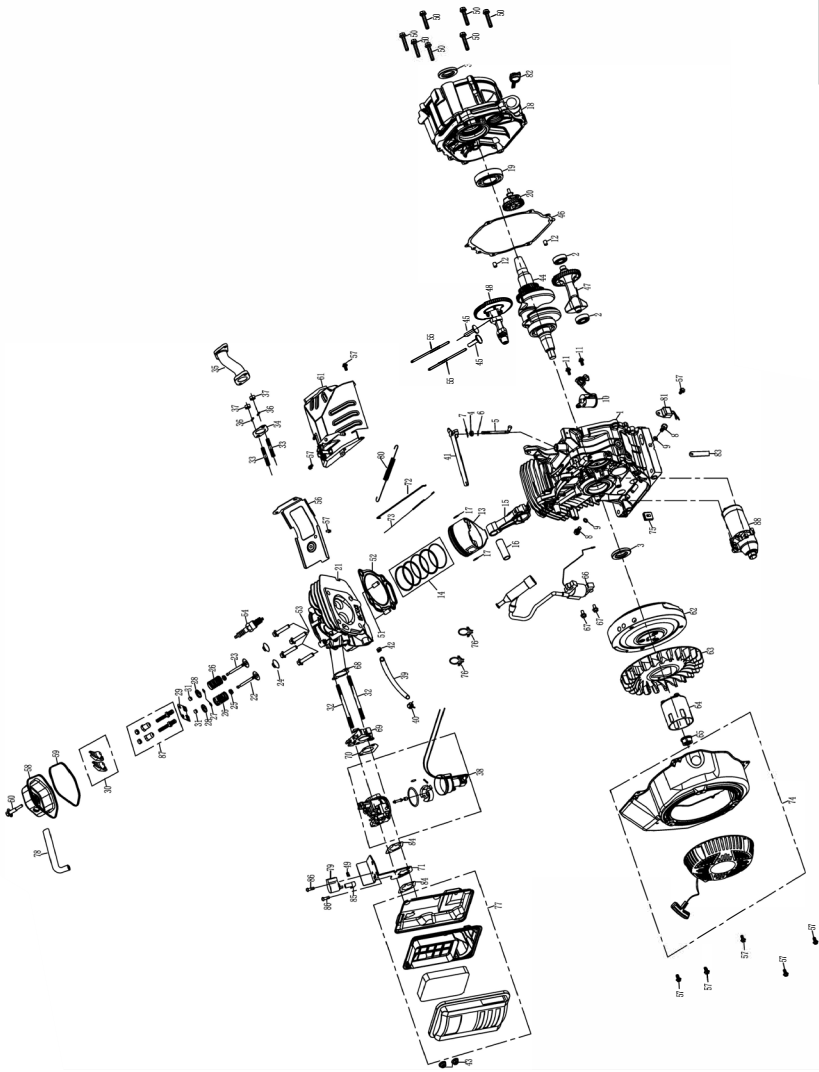
NO.	Code	Part name	QTY.
1	774410-208	FRAME	1
2	531201	SOLATOR A	2
3	531204	SOLATOR B	2
4	90011	NUT M8	2
5	531112	RUBBER DAMPING BRACKET	4
6	53127	BOLT M8X12	8
7	700270-048	FUEL TANK ASSEMBLY	1
8	518201	FUEL COCK	1
9	84003	CLIP FUEL LINE	1
10	70022520-049	ENGINE ASST DRIVE	1
11	531202	STARTER MOTOR	1
12	531209	STARTER MOTOR ASSEMBLY	1
13	532103	MOTOR STAND	1
14	917111	BOLT	1
15	94812	GASKET, ROTOR BOLT	1
16	54206	SPRING WASHER Ø8	2
17	91611	BOLT	4
18	90018	NUT M8	8
19	540201	BRACKET AIR CLEANER	1
20	90055	PACKING EXHAUST	1
21	705893	MUFFLER BRACKET	1
22	530302	MUFFLER COMP	1
23	91343	BOLT M8X16	2
24	735213	PANEL COVER	1
25	53026	SWITCH COGE OPEN	1
26	53027	ENGINE LABEL LAMP	1
27	960394-08	FLAME ROLL OUT SWITCH	1
28	63333	TIME ACCUMULATOR	1
29	92333/6404	THERMAL PROTECTOR	1
30	61205	DC SOCKET	1
31	61480	AUSTRALIAN SOCKET	1
32	93886	GROUND BOLT ASSEMBLY	1
33	93655-16/8605	THE LEAKAGE OPEN	1
34	519487	FUEL TANK CAP COMP	1
35	534101	AUTOMATIC VOLTAGE REGULATOR	1
36	91323	BOLT M8X16	7
37	91322	BOLT M8X12	1
38	90891	WASHER, FUEL TANK	4
39	91327	BOLT M8X25	4
40	533106	END COVER GENERATOR	1
41	91388	BOLT M8X16	4
42	94002	TOOTH TYPE GASKET Ø6	1
43	939-208	FRAME INSIDE TUBE	1
44	54224	FRAME UPPER	1
45	54234	FRAME LOWER	1
46	90016	SPRING WASHER	1
47	90018	NUT M8	1
48	511019	BATTERY	1
49	512010	NEGATIVE LEAD	1
50	512001	POSITIVE LEAD	1
51	542211-208	SHROULD, BATTERY	1

Generator Parts List

Part No.
TM510-3400



NO.	QTY.	DESC.	PART #
1	1	WHEEL ASSEMBLY	100000000
2	1	WHEEL	100000000
3	1	WHEEL	100000000
4	1	WHEEL	100000000
5	1	WHEEL	100000000
6	1	WHEEL	100000000
7	1	WHEEL	100000000
8	1	WHEEL	100000000
9	1	WHEEL	100000000
10	1	WHEEL	100000000
11	1	WHEEL	100000000
12	1	WHEEL	100000000
13	1	WHEEL	100000000
14	1	WHEEL	100000000
15	1	WHEEL	100000000
16	1	WHEEL	100000000
17	1	WHEEL	100000000
18	1	WHEEL	100000000
19	1	WHEEL	100000000
20	1	WHEEL	100000000
21	1	WHEEL	100000000
22	1	WHEEL	100000000
23	1	WHEEL	100000000
24	1	WHEEL	100000000
25	1	WHEEL	100000000
26	1	WHEEL	100000000
27	1	WHEEL	100000000
28	1	WHEEL	100000000
29	1	WHEEL	100000000
30	1	WHEEL	100000000
31	1	WHEEL	100000000
32	1	WHEEL	100000000
33	1	WHEEL	100000000
34	1	WHEEL	100000000
35	1	WHEEL	100000000
36	1	WHEEL	100000000
37	1	WHEEL	100000000
38	1	WHEEL	100000000
39	1	WHEEL	100000000
40	1	WHEEL	100000000
41	1	WHEEL	100000000
42	1	WHEEL	100000000
43	1	WHEEL	100000000
44	1	WHEEL	100000000
45	1	WHEEL	100000000
46	1	WHEEL	100000000
47	1	WHEEL	100000000
48	1	WHEEL	100000000
49	1	WHEEL	100000000
50	1	WHEEL	100000000
51	1	WHEEL	100000000
52	1	WHEEL	100000000
53	1	WHEEL	100000000
54	1	WHEEL	100000000
55	1	WHEEL	100000000
56	1	WHEEL	100000000
57	1	WHEEL	100000000
58	1	WHEEL	100000000
59	1	WHEEL	100000000
60	1	WHEEL	100000000
61	1	WHEEL	100000000
62	1	WHEEL	100000000
63	1	WHEEL	100000000
64	1	WHEEL	100000000
65	1	WHEEL	100000000
66	1	WHEEL	100000000
67	1	WHEEL	100000000
68	1	WHEEL	100000000
69	1	WHEEL	100000000
70	1	WHEEL	100000000
71	1	WHEEL	100000000
72	1	WHEEL	100000000
73	1	WHEEL	100000000
74	1	WHEEL	100000000
75	1	WHEEL	100000000
76	1	WHEEL	100000000
77	1	WHEEL	100000000
78	1	WHEEL	100000000
79	1	WHEEL	100000000
80	1	WHEEL	100000000
81	1	WHEEL	100000000
82	1	WHEEL	100000000
83	1	WHEEL	100000000
84	1	WHEEL	100000000
85	1	WHEEL	100000000
86	1	WHEEL	100000000
87	1	WHEEL	100000000
88	1	WHEEL	100000000
89	1	WHEEL	100000000
90	1	WHEEL	100000000
91	1	WHEEL	100000000
92	1	WHEEL	100000000
93	1	WHEEL	100000000
94	1	WHEEL	100000000
95	1	WHEEL	100000000
96	1	WHEEL	100000000
97	1	WHEEL	100000000
98	1	WHEEL	100000000
99	1	WHEEL	100000000
100	1	WHEEL	100000000

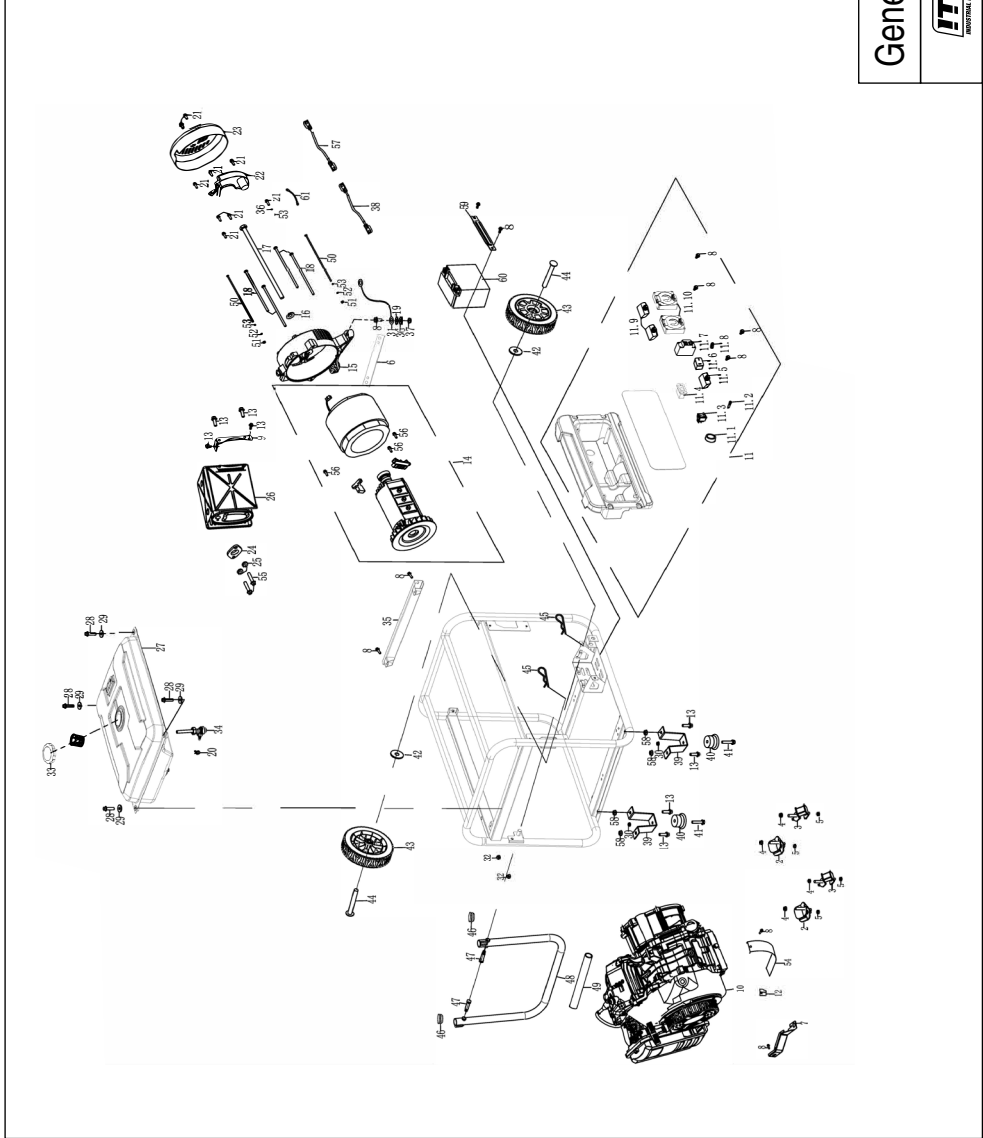


Engine Breakdown

Part No.
TM510-6500



10	1000000000	WATER PUMP
11	1000000000	WATER PUMP
12	1000000000	WATER PUMP
13	1000000000	WATER PUMP
14	1000000000	WATER PUMP
15	1000000000	WATER PUMP
16	1000000000	WATER PUMP
17	1000000000	WATER PUMP
18	1000000000	WATER PUMP
19	1000000000	WATER PUMP
20	1000000000	WATER PUMP
21	1000000000	WATER PUMP
22	1000000000	WATER PUMP
23	1000000000	WATER PUMP
24	1000000000	WATER PUMP
25	1000000000	WATER PUMP
26	1000000000	WATER PUMP
27	1000000000	WATER PUMP
28	1000000000	WATER PUMP
29	1000000000	WATER PUMP
30	1000000000	WATER PUMP
31	1000000000	WATER PUMP
32	1000000000	WATER PUMP
33	1000000000	WATER PUMP
34	1000000000	WATER PUMP
35	1000000000	WATER PUMP
36	1000000000	WATER PUMP
37	1000000000	WATER PUMP
38	1000000000	WATER PUMP
39	1000000000	WATER PUMP
40	1000000000	WATER PUMP
41	1000000000	WATER PUMP
42	1000000000	WATER PUMP
43	1000000000	WATER PUMP
44	1000000000	WATER PUMP
45	1000000000	WATER PUMP
46	1000000000	WATER PUMP
47	1000000000	WATER PUMP
48	1000000000	WATER PUMP
49	1000000000	WATER PUMP
50	1000000000	WATER PUMP
51	1000000000	WATER PUMP
52	1000000000	WATER PUMP
53	1000000000	WATER PUMP
54	1000000000	WATER PUMP
55	1000000000	WATER PUMP
56	1000000000	WATER PUMP
57	1000000000	WATER PUMP
58	1000000000	WATER PUMP
59	1000000000	WATER PUMP
60	1000000000	WATER PUMP
61	1000000000	WATER PUMP
62	1000000000	WATER PUMP
63	1000000000	WATER PUMP
64	1000000000	WATER PUMP
65	1000000000	WATER PUMP
66	1000000000	WATER PUMP
67	1000000000	WATER PUMP
68	1000000000	WATER PUMP
69	1000000000	WATER PUMP
70	1000000000	WATER PUMP
71	1000000000	WATER PUMP
72	1000000000	WATER PUMP
73	1000000000	WATER PUMP
74	1000000000	WATER PUMP
75	1000000000	WATER PUMP
76	1000000000	WATER PUMP
77	1000000000	WATER PUMP
78	1000000000	WATER PUMP
79	1000000000	WATER PUMP
80	1000000000	WATER PUMP
81	1000000000	WATER PUMP
82	1000000000	WATER PUMP
83	1000000000	WATER PUMP
84	1000000000	WATER PUMP
85	1000000000	WATER PUMP
86	1000000000	WATER PUMP
87	1000000000	WATER PUMP
88	1000000000	WATER PUMP
89	1000000000	WATER PUMP
90	1000000000	WATER PUMP
91	1000000000	WATER PUMP
92	1000000000	WATER PUMP
93	1000000000	WATER PUMP
94	1000000000	WATER PUMP
95	1000000000	WATER PUMP
96	1000000000	WATER PUMP
97	1000000000	WATER PUMP
98	1000000000	WATER PUMP
99	1000000000	WATER PUMP
100	1000000000	WATER PUMP

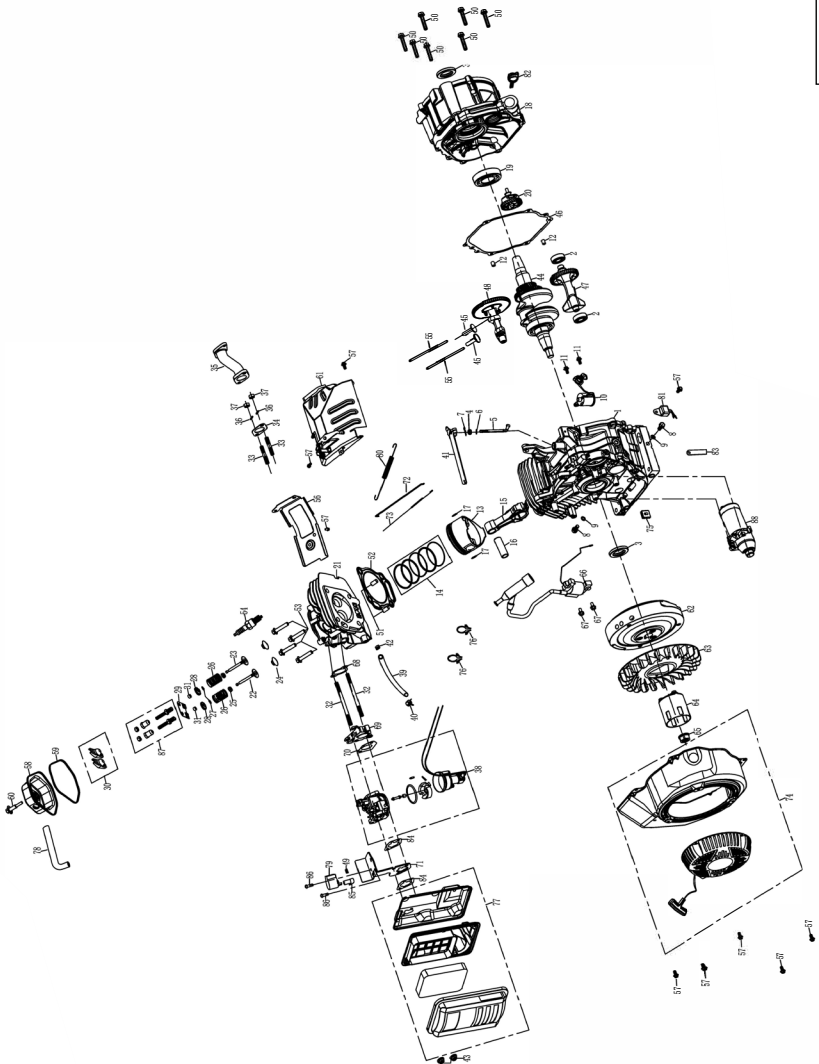


Generator Parts List

Part No.
TM510-6500

ITM
INDUSTRIAL TOOLS

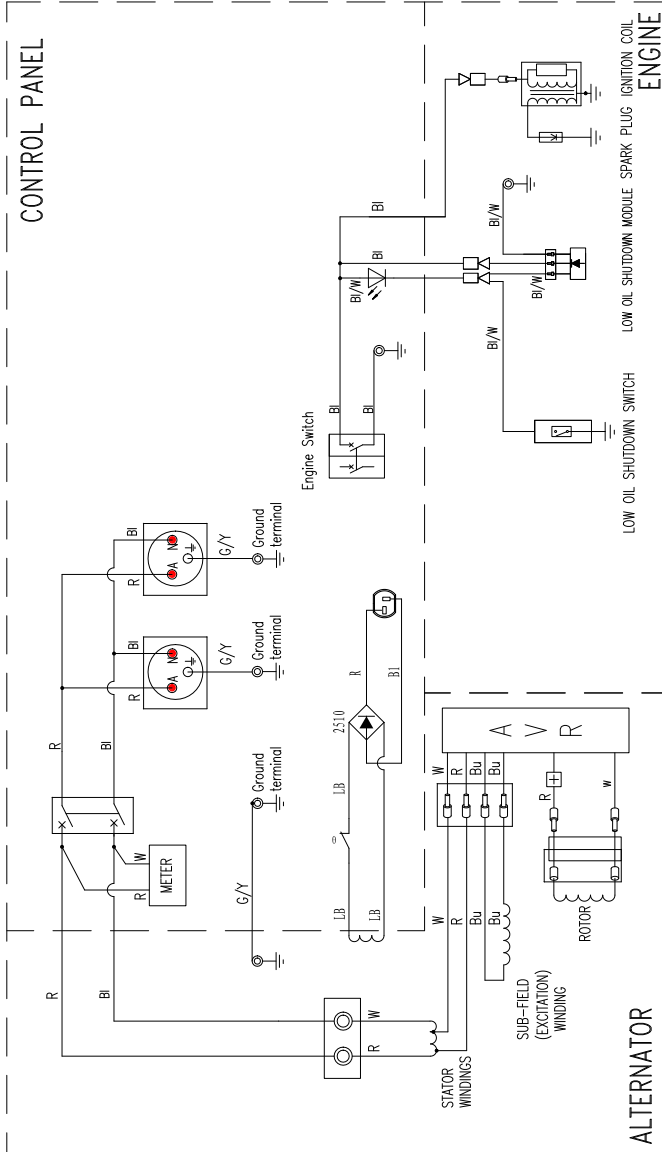
QTY	DESCRIPTION	UNIT
1	COVER	1
2	SCREW	2
3	WASHER	2
4	WASHER	2
5	WASHER	2
6	WASHER	2
7	WASHER	2
8	WASHER	2
9	WASHER	2
10	WASHER	2
11	WASHER	2
12	WASHER	2
13	WASHER	2
14	WASHER	2
15	WASHER	2
16	WASHER	2
17	WASHER	2
18	WASHER	2
19	WASHER	2
20	WASHER	2
21	WASHER	2
22	WASHER	2
23	WASHER	2
24	WASHER	2
25	WASHER	2
26	WASHER	2
27	WASHER	2
28	WASHER	2
29	WASHER	2
30	WASHER	2
31	WASHER	2
32	WASHER	2
33	WASHER	2
34	WASHER	2
35	WASHER	2
36	WASHER	2
37	WASHER	2
38	WASHER	2
39	WASHER	2
40	WASHER	2
41	WASHER	2
42	WASHER	2
43	WASHER	2
44	WASHER	2
45	WASHER	2
46	WASHER	2
47	WASHER	2
48	WASHER	2
49	WASHER	2
50	WASHER	2
51	WASHER	2
52	WASHER	2
53	WASHER	2
54	WASHER	2
55	WASHER	2
56	WASHER	2
57	WASHER	2
58	WASHER	2
59	WASHER	2
60	WASHER	2
61	WASHER	2
62	WASHER	2
63	WASHER	2
64	WASHER	2
65	WASHER	2
66	WASHER	2
67	WASHER	2
68	WASHER	2
69	WASHER	2
70	WASHER	2
71	WASHER	2
72	WASHER	2
73	WASHER	2
74	WASHER	2
75	WASHER	2
76	WASHER	2
77	WASHER	2
78	WASHER	2
79	WASHER	2
80	WASHER	2
81	WASHER	2
82	WASHER	2
83	WASHER	2
84	WASHER	2
85	WASHER	2
86	WASHER	2
87	WASHER	2
88	WASHER	2
89	WASHER	2
90	WASHER	2
91	WASHER	2
92	WASHER	2
93	WASHER	2
94	WASHER	2
95	WASHER	2
96	WASHER	2
97	WASHER	2
98	WASHER	2
99	WASHER	2
100	WASHER	2



Engine Breakdown

Part No. **TM510-8000**



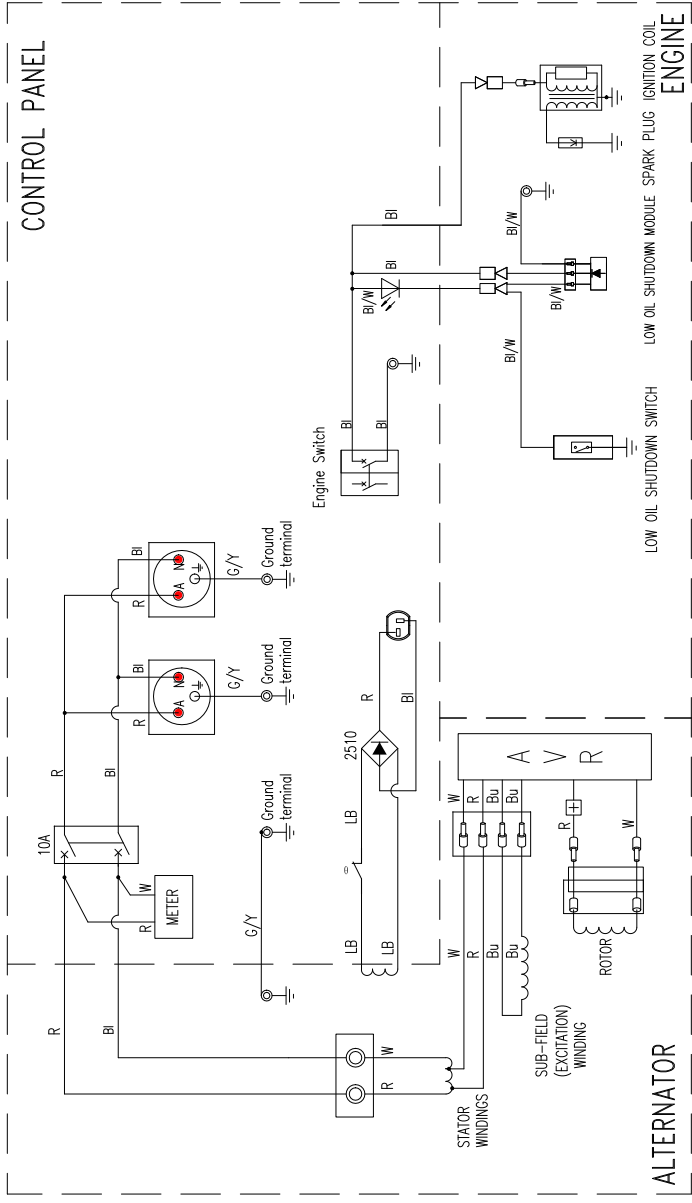


WIRING DIAGRAM OF TM510-2300 GENERATOR SET

Bl	Black	Br	Brown	G/Y	Green/Yellow
O	Orange	Br/R	Brown/Red	B/W	Black/White
Bu	Blue	LB	Light Blue	P	Pink
Cr	Grey	BI	Black	C	Green
R	Red	W	White	Y	Yellow

富士通公司

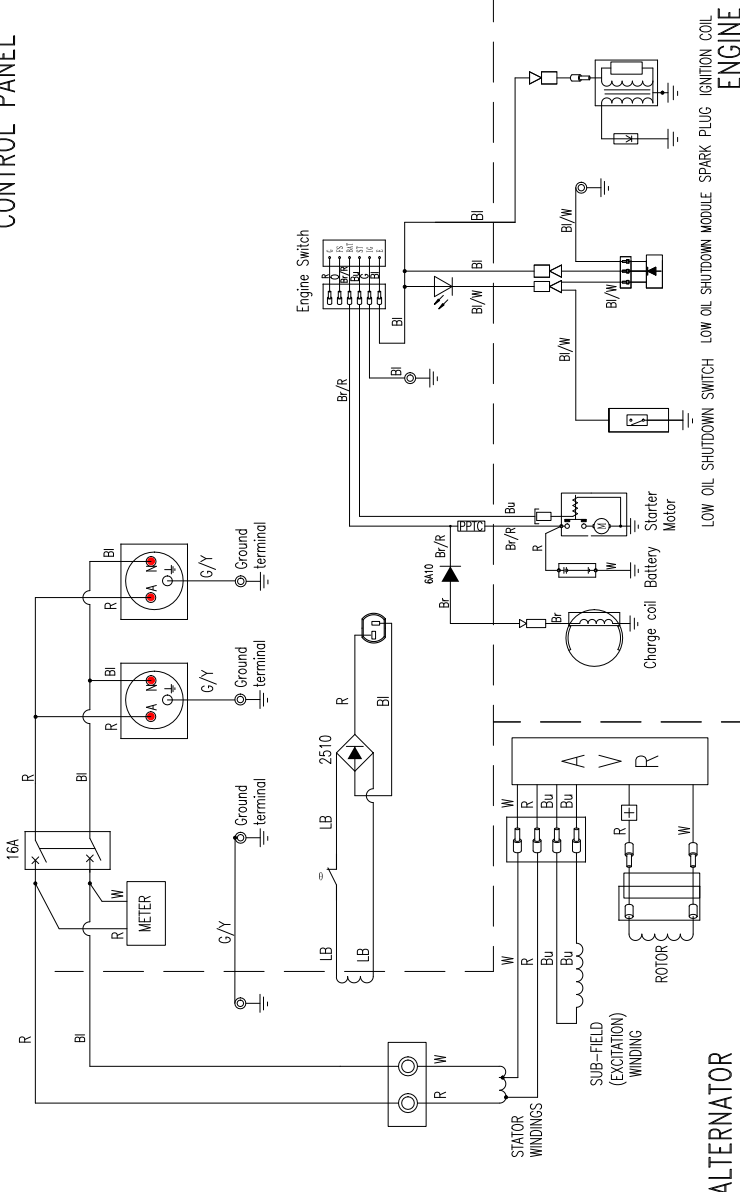
富士通公司



WIRING DIAGRAM OF TM510-2800 GENERATOR SET

Bl	Black	Br	Brown	G/Y	Green/Yellow
O	Orange	Br/R	Brown/Red	Bl/W	Black/White
Bu	Blue	LB	Light Blue	P	Pink
Gr	Grey	Bl	Black	G	Green
R	Red	W	White	Y	Yellow

CONTROL PANEL



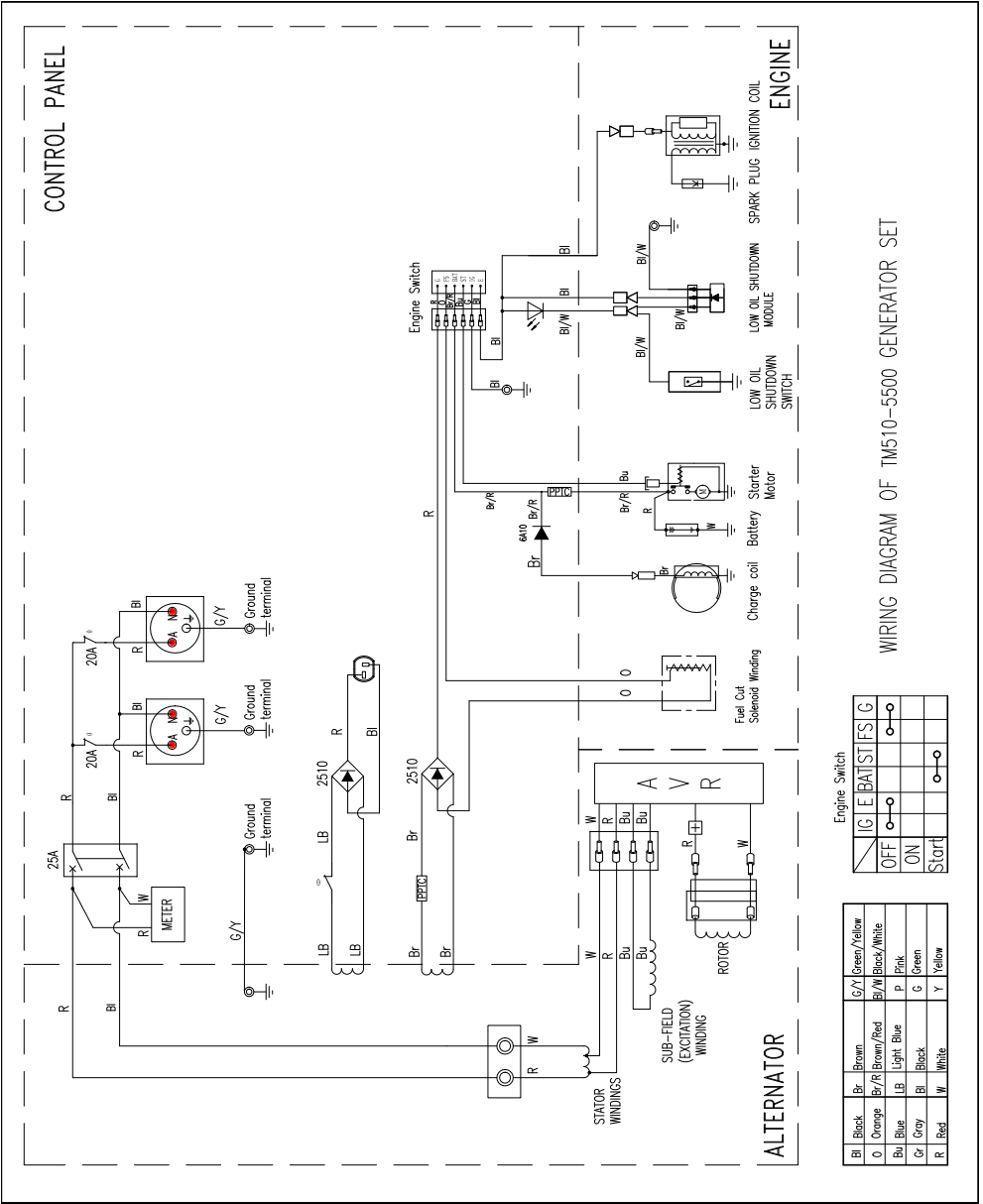
ALTERNATOR

Engine Switch

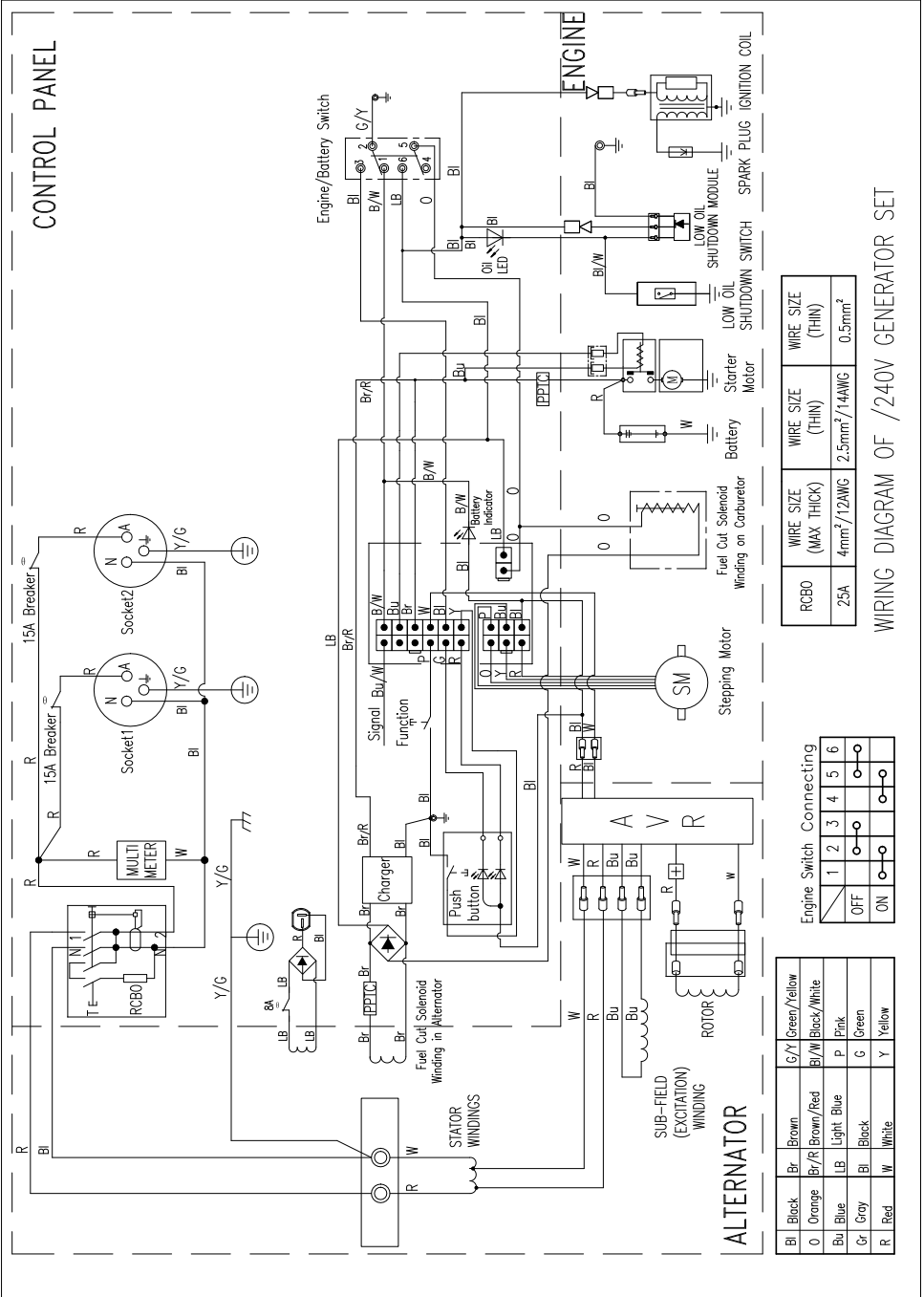
	IG	E	BAT	ST	FS	G
OFF	○	○	○	○	○	○
ON	○	○	○	○	○	○
Start	○	○	○	○	○	○

Bl	Black	Br	Brown	G/Y	Green/Yellow
O	Orange	Br/R	Brown/Red	Bl/W	Black/White
Bu	Blue	LB	Light Blue	P	Pink
Cr	Cray	Bl	Black	G	Green
R	Red	W	White	Y	Yellow

WIRING DIAGRAM OF TM510-3400 GENERATOR SET



WIRING DIAGRAM OF TM510-5500 GENERATOR SET

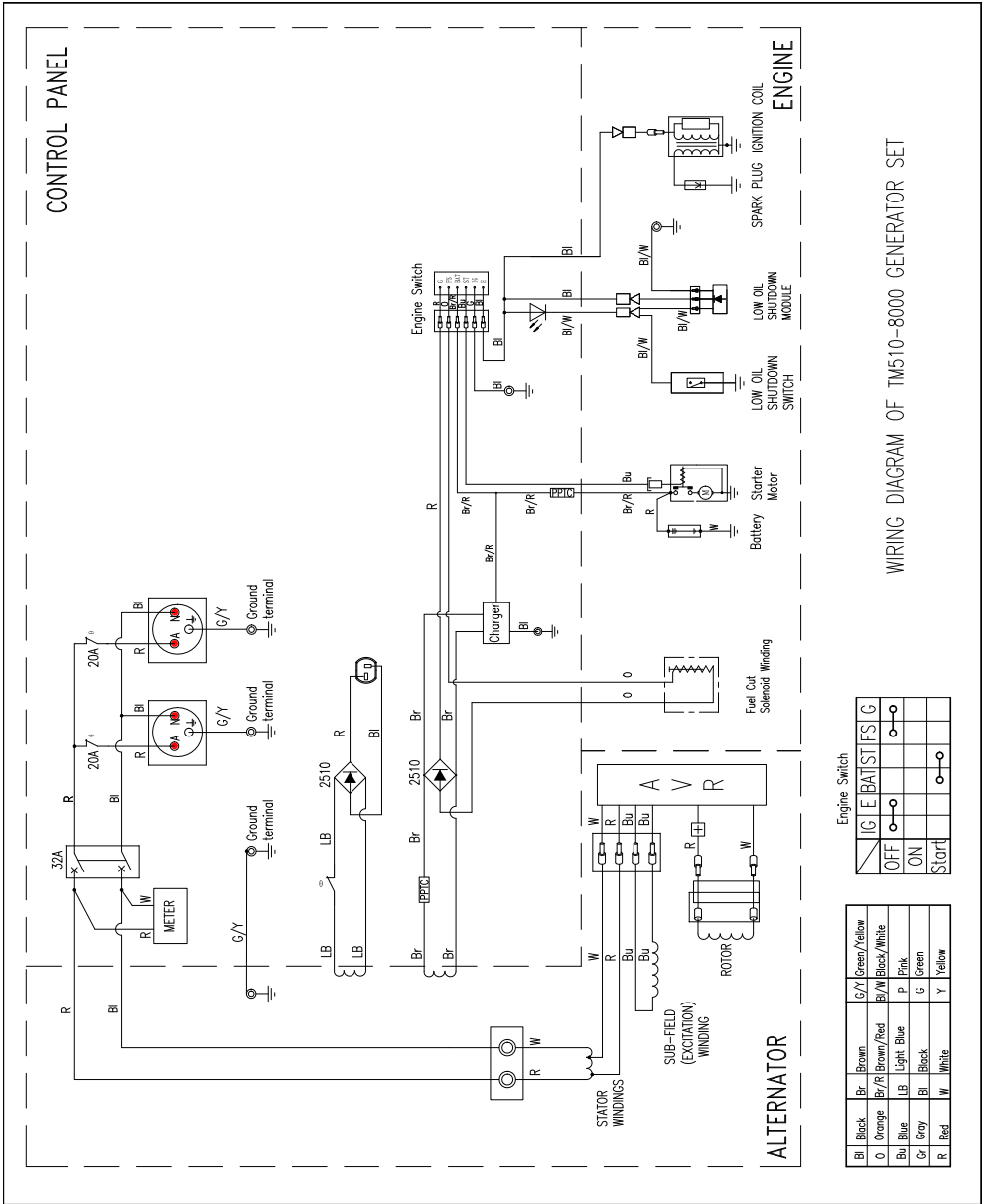


RCBO	WIRE SIZE (MAX THICK)	WIRE SIZE (THIN)	WIRE SIZE (THIN)
25A	4mm ² /12AWG	2.5mm ² /14AWG	0.5mm ²

	1	2	3	4	5	6
OFF	○	○	○	○	○	○
ON	○	○	○	○	○	○

Color	Code	Color	Code
Black	Br	Brown	C/Y
Orange	Br/R	Brown/Red	Bi/W
Blue	LB	Light Blue	P
Grey	Bi	Black	G
Red	W	White	Y
			Green/Yellow

WIRING DIAGRAM OF /240V GENERATOR SET



WIRING DIAGRAM OF TM510-8000 GENERATOR SET

Engine Switch

IG	E	B	A	T	S	F	S	G
OFF	ON	Start						

BI	Black	Br	Brown	G/Y	Green/Yellow
O	Orange	Br/R	Brown/Red	BI/W	Black/White
Bu	Blue	LB	Light Blue	P	Pink
Gr	Gray	BI	Black	G	Green
R	Red	W	White	Y	Yellow