

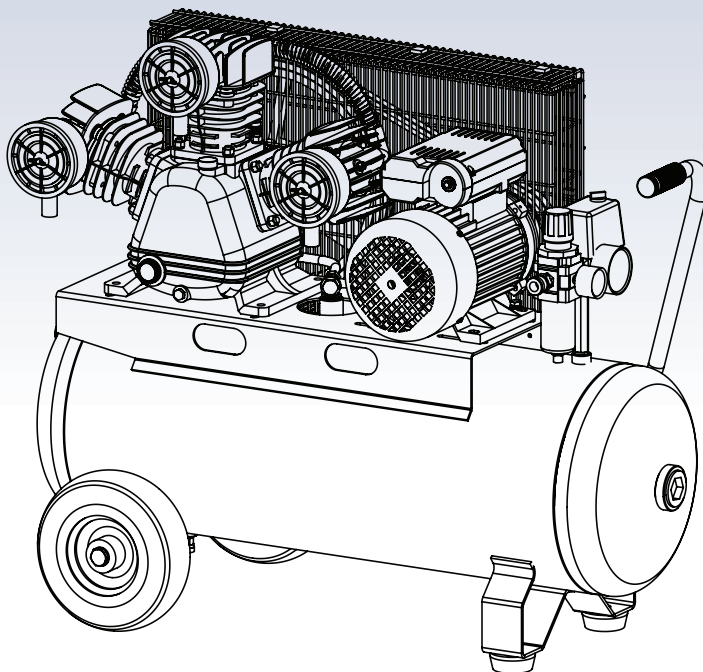


INDUSTRIAL SERIES
AIR COMPRESSOR

3.0_{HP}

BELT DRIVE AIR COMPRESSOR

OPERATOR'S MANUAL



TM351-30060 (60Ltr Tank)

TM351-30090 (90Ltr Tank)

Ver: 1.0

TABLE OF CONTENTS

Warranty	2
Product Specifications	3
Product Diagram & Parts List	4
Safety Instructions	7
Getting Started	9
Maintenance	10
Trouble Shooting	10

LIMITED WARRANTY

Industrial Tool & Machinery Sales (hereinafter referred to as ITMS) will, within twelve (12) months from the original date of purchase, repair or replace any goods found to be defective in materials or workmanship.

This warranty is void if the item has been damaged by accident, neglect, improper service or other causes not arising out of defects in materials or workmanship. This warranty does not apply to machines and/or components which have been altered, changed, or modified in any way, or subjected to overloading or use beyond recommended capacities and specifications. Worn componentry due to normal wear and tear is not a warranty claim. Goods returned defective shall be returned prepaid freight to ITMS or agreed repair agent, which shall be the buyer's sole and exclusive remedy for defective goods. ITMS accepts no additional liability pursuant to this guarantee for the costs of travelling or transportation of the product or parts to and from ITMS or the service agent or dealer, such costs are not included in this warranty.

Our goods come with guarantees which cannot be excluded under the Australian Consumer Law. You are entitled to replacement or refund for a major failure and to compensation for other reasonably foreseeable loss or damage. You are also entitled to have the goods repaired or replaced if the goods fail to be of acceptable quality and the failure does not amount to a major failure.

THE MANUFACTURER RESERVES THE RIGHT TO MAKE IMPROVEMENTS AND MODIFICATIONS TO DESIGN WITHOUT PRIOR NOTICE.

PRODUCTS IMPORTED AND DISTRIBUTED NATIONALLY BY:



INDUSTRIAL TOOL & MACHINERY SALES
18 BUSINESS ST, YATALA QLD 4207
T: 07 3287 1114 E: sales@industrialtool.com.au
F: 07 3287 1115 W: www.itmtools.com.au

! SAFETY INFORMATION

Please read and understand this entire manual before attempting to operate the product.

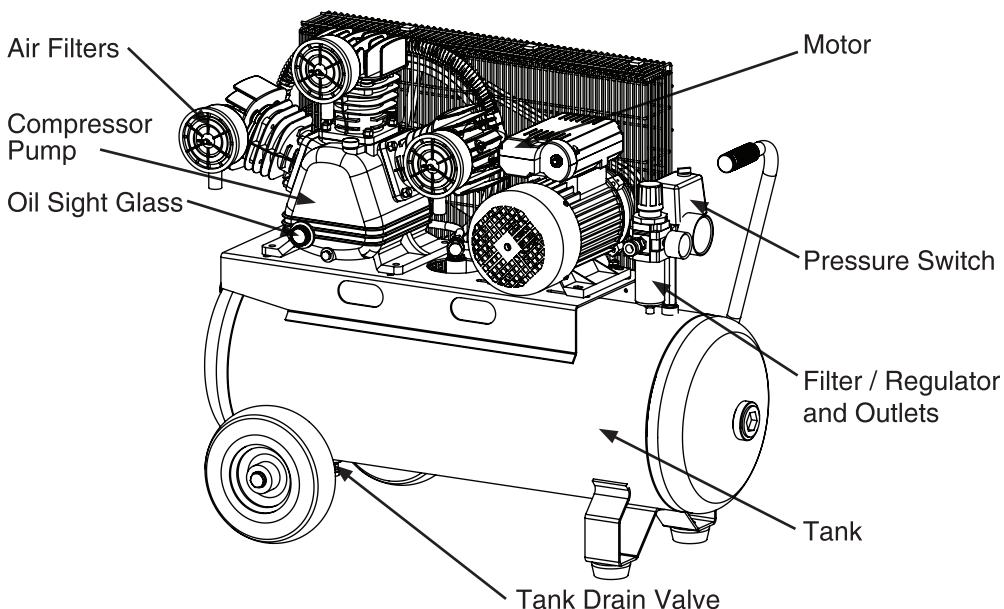
Improper operation or maintenance of this product could result in serious injury and property damage. Read and understand all warnings and operation instructions before using this equipment. When using air tools, basic safety precautions should always be followed to reduce the risk of personal injury.

ITM air compressors are manufactured to AS1210 Standards.

This air receiver is registered with WorkSafe Australia to comply with plant registration regulations in Australia.

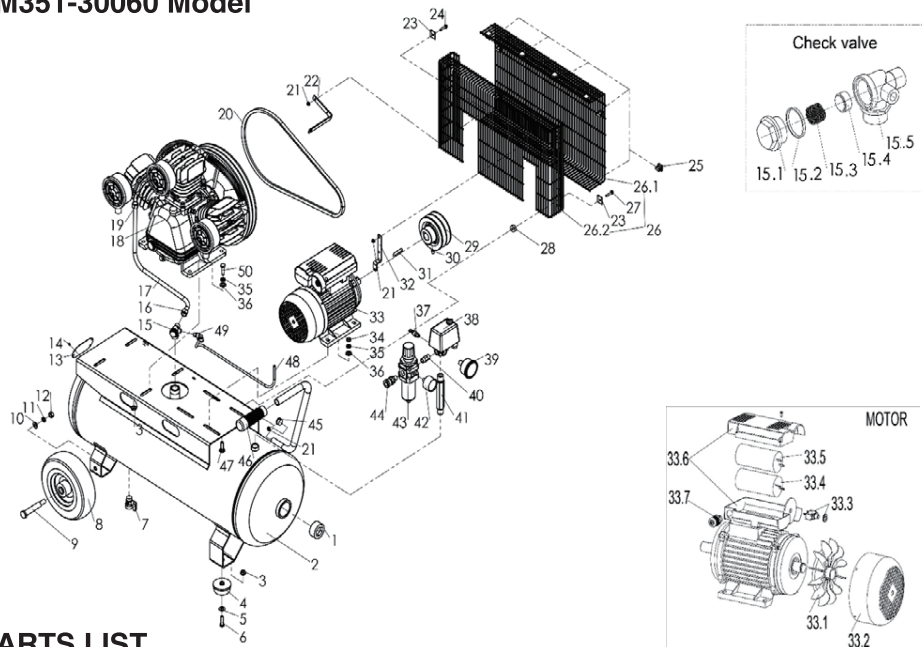
PRODUCT SPECIFICATIONS

COMPONENT	SPECIFICATIONS	
Model	TM351-30060	TM351-30090
Motor	3.0HP / 2.2KW	3.0HP / 2.2KW
Rated Speed	2,850 RPM	2,850 RPM
Voltage	240V / 50 Hz	240V / 50 Hz
Tank Capacity	60 Litre	90 Litre
Max Pressure	145 psi (10 Bar)	145 psi (10 Bar)
Free Air Delivery	328 Ltr/min	328 Ltr/min
Circuit Required	10 Amp	10 Amp
Pump Type	Belt Drive	Belt Drive



PARTS DIAGRAM - MAIN ASSEMBLY

TM351-30060 Model

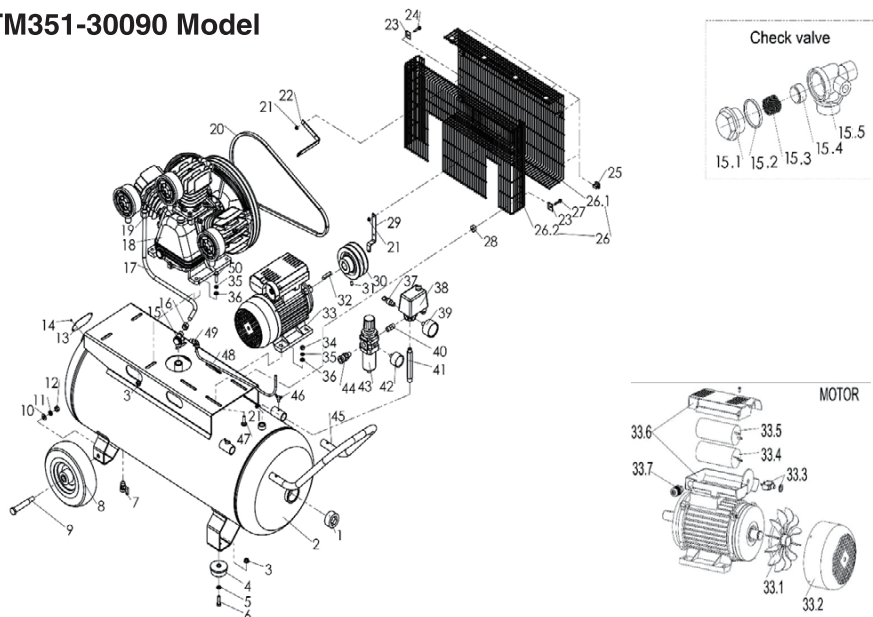


PARTS LIST

No.	Qty.	Part Name	No.	Qty.	Part Name	No.	Qty.	Part Name
1	2	Plug, Socket head	18	1	Pump	33.5	1	Capacitance, 150uf/350VAC
2	1	Air Tank	19	1	Sleeve nut	33.6	1	Capacitance box
3	6	Hex. Nut	20	2	V-Belt	33.7	1	Cable clamp
4	2	Rubber foot	21	4	Hex. Nut	34	4	Hex. Nut
5	2	PL. Washer	22	1	Bracket	35	8	Sp. Washer
6	2	Hex. Bolt	23	4	Steel clip	36	8	PL. Washer
7	1	Ball valve	24	2	Hex. Bolt	37	1	Safety valve
8	2	wheel	25	7	Plastic clip	38	1	Pressure switch
9	2	Axle	26	1	Belt guard	39	1	Pressure gauge
10	2	PL. Washer	26.1	1	Belt guard (FR)	40	1	Nipple
11	2	SP. Washer	26.2	1	Belt guard (RR)	41	1	Nipple
12	2	Hex. Nut	27	2	Hex. Bolt	42	1	Pressure Gauge
13	1	Tank name plate	28	2	Rubble washer	43	1	Pressure Regulator
14	4	rivet	29	1	Motor pulley	44	1	Quick Coupler, Mato
15	1	Check Valve	30	1	Set screw	45	1	Grip, Handle
15.1	1	Bonnet	31	1	Key	46	1	Grip, Handle
15.2	1	O-ring	32	1	Guard bracket	47	4	Bolt
15.3	1	Spring	33	1	Motor	48	1	Discharge Tube
15.4	1	valve element	33.1	1	Fan	49	1	Elbow fitting
15.5	1	valve body	33.2	1	Fan cover	50	2	Hex. Bolt
16	1	Sleeve nut	33.3	1	Overload protector	50	4	Hex. Bolt
17	1	Copper tube	33.4	1	Capacitance, 45uf/450VAC			

PARTS DIAGRAM - MAIN ASSEMBLY

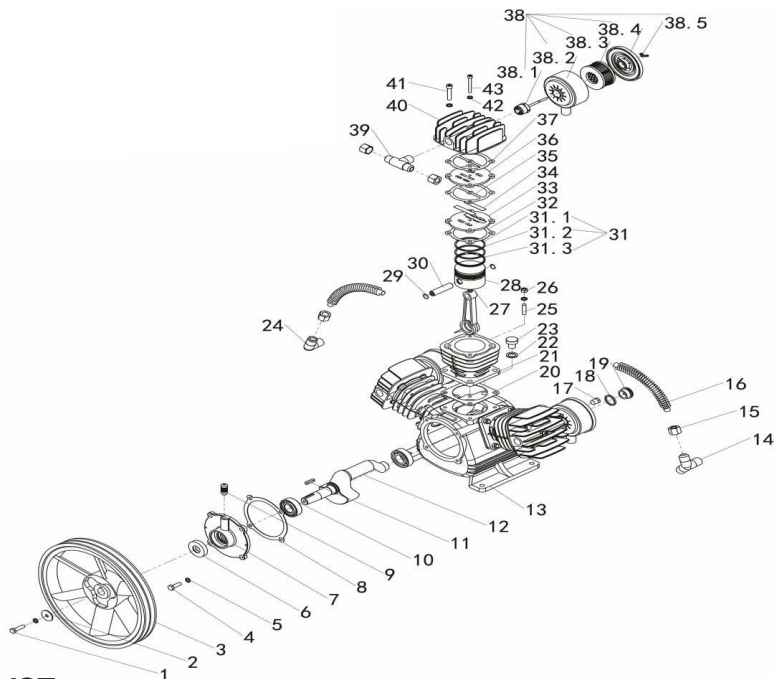
TM351-30090 Model



PARTS LIST

No.	Qty.	Part Name	No.	Qty.	Part Name	No.	Qty.	Part Name
1	2	Plug, Socket head	19	1	Sleeve nut	33.6	1	Capacitance box
2	1	Air Tank	20	2	V-Belt	33.7	1	Cable clamp
3	6	Hex. Nut	21	4	Hex. Nut	34	4	Hex. Nut
4	2	Rubber foot	22	1	Bracket	35	8	Sp. Washer
5	2	PL. Washer	23	4	Steel clip	36	8	PL. Washer
6	2	Hex. Bolt	24	2	Hex. Bolt	37	1	Safety valve
7	1	Ball valve	25	7	Plastic clip	38	1	Pressure switch
8	2	wheel	26	1	Belt guard	39	1	Pressure gauge
9	2	Axle	26.1	1	Belt guard (FR)	40	1	Nipple
10	2	PL. Washer	26.2	1	Belt guard (RR)	41	1	Nipple
11	2	SP. Washer	27	2	Hex. Bolt	42	1	Pressure Gauge
12	2	Hex. Nut	28	2	Rubble washer	43	1	Pressure Regulator
13	1	Tank name plate	29	1	Motor pulley	44	1	Quick Coupler, Mato
14	4	rivet	30	1	Set screw	45	1	Handle
15	1	Check Valve	31	1	Key	46	2	Butterfly bolt
15.1	1	Bonnet	32	1	Guard bracket	47	4	Bolt
15.2	1	O-ring	33	1	Motor	48	1	Discharge Tube
15.3	1	Spring	33.1	1	Fan	49	1	Elbow fitting
15.4	1	valve element	33.2	1	Fan cover	50	2	Hex. Bolt
15.5	1	valve body	33.3	1	Overload protector	50	4	Hex. Bolt
16	1	Sleeve nut	33.4	1	Capacitance, 45uf/450VAC			
17	1	Copper tube	33.5	1	Capacitance, 150uf/350VAC			
18	1	Pump						

PARTS DIAGRAM - PUMP



PARTS LIST

1 Hex.bolt	21 Cylinder	38 Air filter Ass'y
2 PL. washer	22 O-Ring	38.1 Screw
3 Fly wheel	23 Oil Cap	38.2 Case
4 Hex.bolt	24 2-way manifold nipple	38.3 Element
5 Sp.washer	25 Stud Bolt	38.4 Case
6 Oil Seal	26 Hex.Nut	38.5 Butterfly.Nut
7 Front cover	27 Connecting rod	39 3-Way manifold nipple
8 Gasket	28 Piston	40 Cylinder head
9 Breather	29 Circlip	41 Hex.Socket bolt
10 Bearing	30 Piston pin	42 Sp.washer
11 key	31 Piston Ring Kit	43 Hex.Socket bolt
12 Crankshaft	31.1 Compressor Ring	
13 Crank case	31.2 Scraping Ring	
14 3-way manifold nipple	31.3 Oil Ring	
15 Sleeve nut	32 Gasket Valve	
16 Copper tube	33 Valve Seat 2	
17 Plug	34 Valve blade	
18 O-Ring	35 Gasket Valve	
19 Oil sightglass	36 Valve Seat1	
20 Cylinder gasket	37 Gasket,Cylinder cover	

GENERAL SAFETY RULES FOR OPERATION

Before attempting to operate this compressor the following basic safety precautions should always be taken to reduce the risk of fire and personal injury. It is important to read the instruction manual to understand the application, limitations and potential hazards associated with any tool. They are designed for the safety of yourself and others, ensuring a long and trouble free service life from your machine.

Work Area

- a. Keep work area clean and well lit. Cluttered and dark areas invite accidents.
- b. Floors should be kept clean and free from rubbish. Special care should be taken if the floor is slippery due to sawdust or wax.
- c. Keep children and bystanders away while operating a compressor. Distractions can cause you to lose control.
- d. Do not use compressor in areas where there is a risk of explosion or fire from combustible materials, flammable liquids, e.g., paint, varnish, petrol etc or flammable gases and dust of an explosive nature.

Electrical Safety

- a. Power tool plugs must match the outlet. Never modify the plug in any way. Do not use any adapter plugs with earthed (grounded) power tools. Unmodified plugs and matching outlets will reduce risk of electric shock.
- b. Do not expose the compressor to rain or wet conditions. Water entering the electric motor will increase the risk of electric shock.
- c. Do not abuse the cord. Never use the cord for pulling or unplugging the compressor. Keep cord away from heat, oil, sharp edges or moving parts. Damaged or entangled cords increase the risk of electric shock.

Personal Safety

- a. Stay alert, watch what you are doing and use common sense when operating a compressor. Do not use while you are tired or under the influence of drugs, alcohol or medication. A moment of inattention while operating this compressor may result in serious personal injury.
- b. Use safety equipment. Always wear eye protection. Safety equipment such as dust mask, non-skid safety shoes or hearing protection used for appropriate conditions will reduce personal injuries.
- c. Avoid accidental starting. Ensure the switch is in the off-position before plugging in.
- d. Do not overreach. Keep proper footing and balance at all times. This enables better control of the power tool in unexpected situations.
- e. Dress properly. Do not wear loose clothing or jewellery. Keep your hair, clothing and gloves away from moving parts. Loose clothes, jewellery or long hair can be caught in moving parts.

GENERAL SAFETY RULES FOR OPERATION

General

- a. Do not operate the compressor without the belt guard being correctly fitted.
- b. Do not attempt to modify the compressor in any way.
- c. The use of any tool or accessory other than those designed for use with compressed air could result in injury to the operator.
- d. The output pressure of the compressor should be adjusted to the design pressure of the air tool or accessory being used.
- e. Always check that the output of the compressor does not exceed the maximum pressure for any attached tool or accessory.
- f. Repairs should only be carried out by qualified persons using original spare parts. Failure to do so may result in considerable danger to the user.

Breathable Air Warning

This compressor/pump is not equipped and should not be used to supply breathing quality air for any application of air for human consumption.

Check Damaged Parts

Before using the compressor it should be carefully checked to determine that it will operate properly and perform its intended function. Check for the correct alignment of moving parts ensuring they do not bind. Check for broken or missing parts and have them replaced or repaired at an authorised service centre. Check any other condition that may affect the operation of the compressor. A guard or any other part of the compressor that is damaged should be properly repaired or replaced by an authorised service centre.

Disconnect Compressor

Ensure that the compressor is disconnected from the mains supply and the tank is empty when not in use, before servicing, lubricating or making adjustments to air lines when changing accessories such as blades, bits, nails and cutters on air tools.

Avoid Unintentional Starting

Ensure that the switch is in the OFF position before plugging the compressor into the mains supply.

Turning The Compressor ON And OFF

Only turn the compressor on and off by using the knob on top of the pressure switch, do not leave it on and switch the compressor on or off from the power supply. Turning the unit on and off from the mains supply only will result in damage to the motor and void warranty as the pressure switch has an additional function to purge the air trapped in the delivery pipe when the motor is turned off. This minimises the load on the motor when it is next started.

GETTING STARTED

Assembly

This air compressor requires some minor assemble before it can be used.

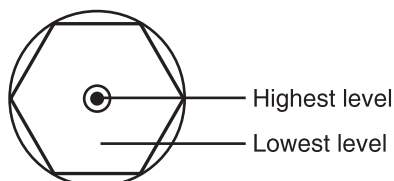
Locate the accessory pack/s. These should contain :

1. Wheel/s and axle set.
2. Rubber stoppers.
3. Air filters.
4. Oil filler breather.

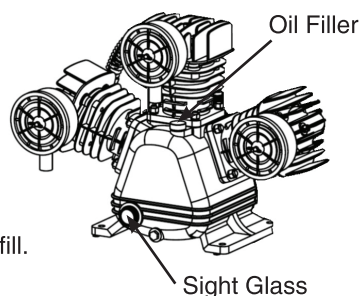
Position the unit on a even surface:

1. Fit the wheel/s to the unit.
2. Fit the rubber stoppers to the legs of the unit.
3. Remove the plastic transit plugs from the cylinder heads and screw in the plastic air filters.
4. Remove the plastic transit plugs from the pump oil filler hole and screw in the oil filler breather.

Oil Warning : Check the oil level before using the compressor.



Check the oil level. If necessary add oil until it reaches the red mark on the sight glass. Do Not over fill.



NOTE: The oil must be changed after the first 10 hours of operation then every 50 hours thereafter. Recommended compressor oil:

AGIP	DICREA100	MOBIL	RARUS 427
BP	ENERGOL CS100	FINA	EOLAN AC 100
SHELL	COREMA OIL H10	CASTROL	AIRCOL PD100
ESSO	EXXC OLUB 150	TOTAL	CORTUSA 100
FUCHX	RENOLIN 104L VG 100	API	CM-8X
IP	CALATIA OIL ISO 100		

(Suitable for room temperature ranging from +5°C to +25°C)



WARNING

Ensure the compressor is disconnected from the power supply when performing maintenance tasks to avoid injury.

MAINTENANCE REQUIRED	FREQUENCY
Check pump oil level	Before each use
Drain the condensation from the air tank	Before each use
Check for loose nuts / bolts and tighten	Before each use
Check for air leaks	Before each use
Remove air filter and clean (or replace as required)	Weekly
Check belt tension	Weekly
Change pump oil	Every 6 Months
Tighten cylinder head bolts	Every 6 Months
Clean and check non return valve	Every 6 Months

TROUBLE SHOOTING

TROUBLE	POSSIBLE CAUSES	REMEDIES
Motor unable to run or running slow	<ul style="list-style-type: none"> Fault in line, or voltage insufficient Power wire too thin or too long Fault in pressure switch Fault in motor Sticking of main compressor 	<ul style="list-style-type: none"> Check the line Replace the wire Repair or replace Repair or replace Check and repair
Sticking of main compressor	<ul style="list-style-type: none"> Moving parts burnt due to the oil insufficient Moving parts damaged, or stuck by foreign body 	Check crankshaft, bearing, connecting rod, piston, piston ring, etc. and replace if necessary
Excessive vibration or abnormal Noise	<ul style="list-style-type: none"> Connecting part loose Foreign body got into main compressor Piston knocking valve seat Moving parts seriously worn 	<ul style="list-style-type: none"> Check and retighten Check and clean away Replace with thicker paper gasket Repair or replace
Pressure insufficient or discharge capacity decreased	<ul style="list-style-type: none"> Motor running too slow Air filter choked up Leakage of safety valve Leakage of discharge pipe Sealing gasket damaged Valve plate damaged, carbon buildup or stuck Piston ring and cylinder worn or damaged 	<ul style="list-style-type: none"> Check and remedy Clean or replace the cartridge Check and adjust Check and repair Check and replace Replace and clean Repair or replace
Excessive oil consumption	<ul style="list-style-type: none"> Oil level too high Breath pipe choked up Piston ring and cylinder worn or damaged 	<ul style="list-style-type: none"> Keep the level within set range Check and clean Repair or replace