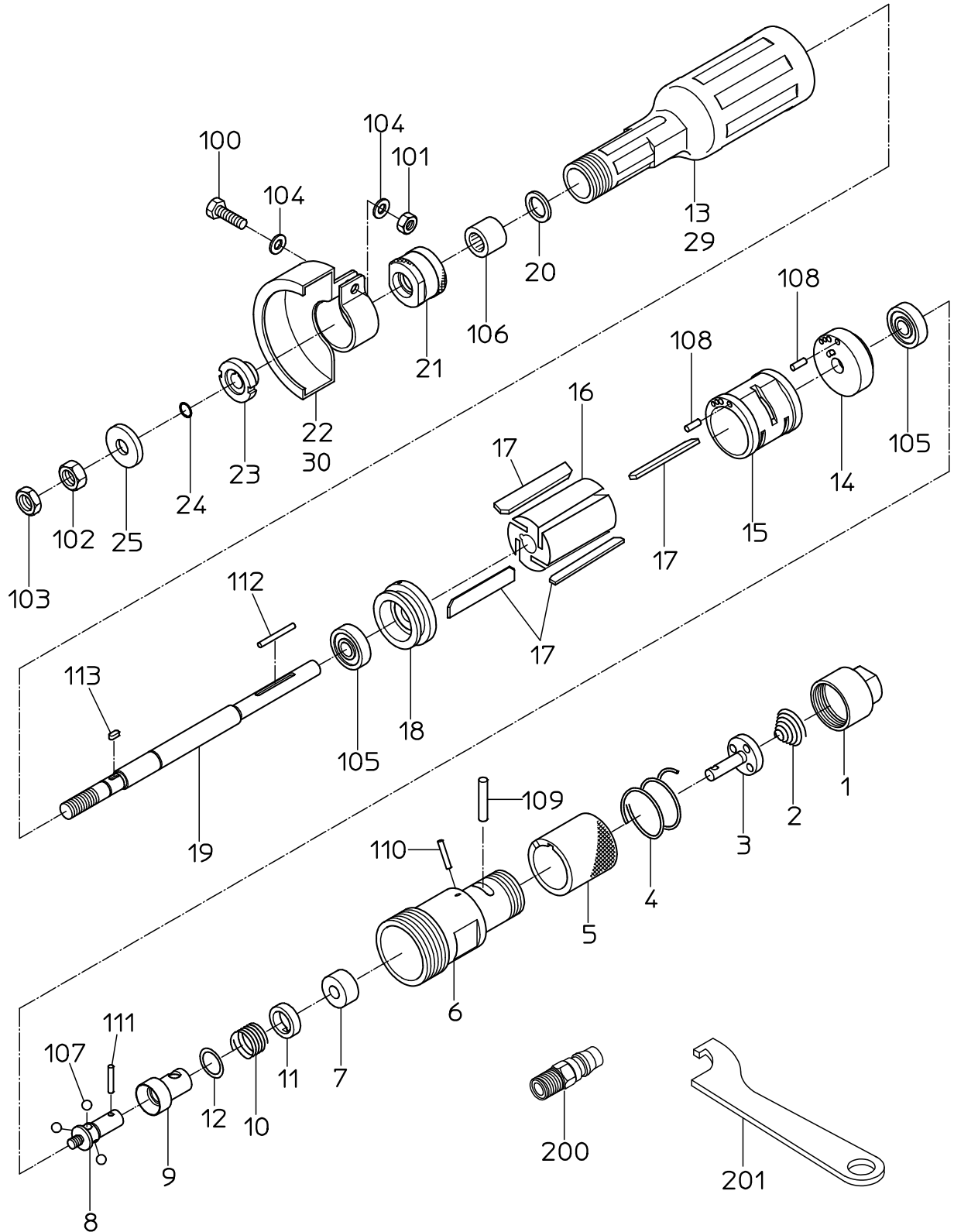


PARTS LIST

NHG-65D

501109



NIPPON PNEUMATIC MFG. CO., LTD.

PARTS LIST

(1/2)

MODEL : **NHG-65D**

501109

ITEM	PART NO.	PART NAME	Q' ty
1	15006960	INLET BUSHING	1
2	15007640	THROTTLE SPRING	1
3	15007770	THROTTLE VALVE	1
4	15007660	PUSH SPRING	1
5	15005990	GRIP	1
6	Not available separately. Available only as HANDLE WB or HANDLE CP (P/No. 15015229 No. 15015228)		1
7	Not available separately. Available only as HANDLE WB or HANDLE CP (P/No. 15015229 No. 15015228)		1
8	15003100	GOVERNOR BODY	1
9	15003090	GOVERNOR VALVE	1
10	15003080	GOVERNOR SPRING	1
11	15003120	GOVERNOR WASHER	1
12	15003280	SHIN WASHER	1
13	15016157	ROTOR CASE	1
14	15003180	TOP PLATE	1
15	15003170	CYLINDER	1
16	15003210	ROTOR	1
17	15016110	VANE	4
18	15003200	BOTTOM PLATE	1
19	15003250	STONE SPINDLE	1
20	15003260	BEARING WASHER	1
21	15003240	SPINDLE NUT	1
22	Not available separately. Available only as STONE COVER CP (P/No. 15015227)		1
23	15003140	STONE FLANGE	1
24	15003270	STOPPER RING	1
25	15003150	STONE WASHER	1
29		NAME PLATE	1
30		NAME PLATE	1
100	72206018	HEX. BOLT	1
101	76111206	NUT	1
102	28100380	NUT	1
103	28100387	NUT	1
104	76310206	WASHER	2
105	28201072	BALL BEARING	2
106	28203074	NEEDLE BEARING	1
107	28205026	STEEL BALL	3
108	28206036	PIN	2
109	28206062	PIN	1
110	28207052	ROLLER PIN	1
111	28209075	ROLLER PIN	1
112	28207067	ROLLER PIN	1
113	28209010	KEY	1
201	24999125	TURNING SPANNER	1

PARTS LIST

(2/2)

MODEL : **NHG-65D**

501109

ITEM	PART NO.	PART NAME	Q' ty
	CP LIST		
	15015226	GOVERNOR CP 8, 9, 10, 11, 12, 107, 111	
	15015227	STONE COVER CP 22, 30, 100, 101, 104	
	15015228	HANDLE CP 1, 2, 3, 4, 5, 6, 7, 109, 110	
	15015229	HANDLE WB 6, 7	