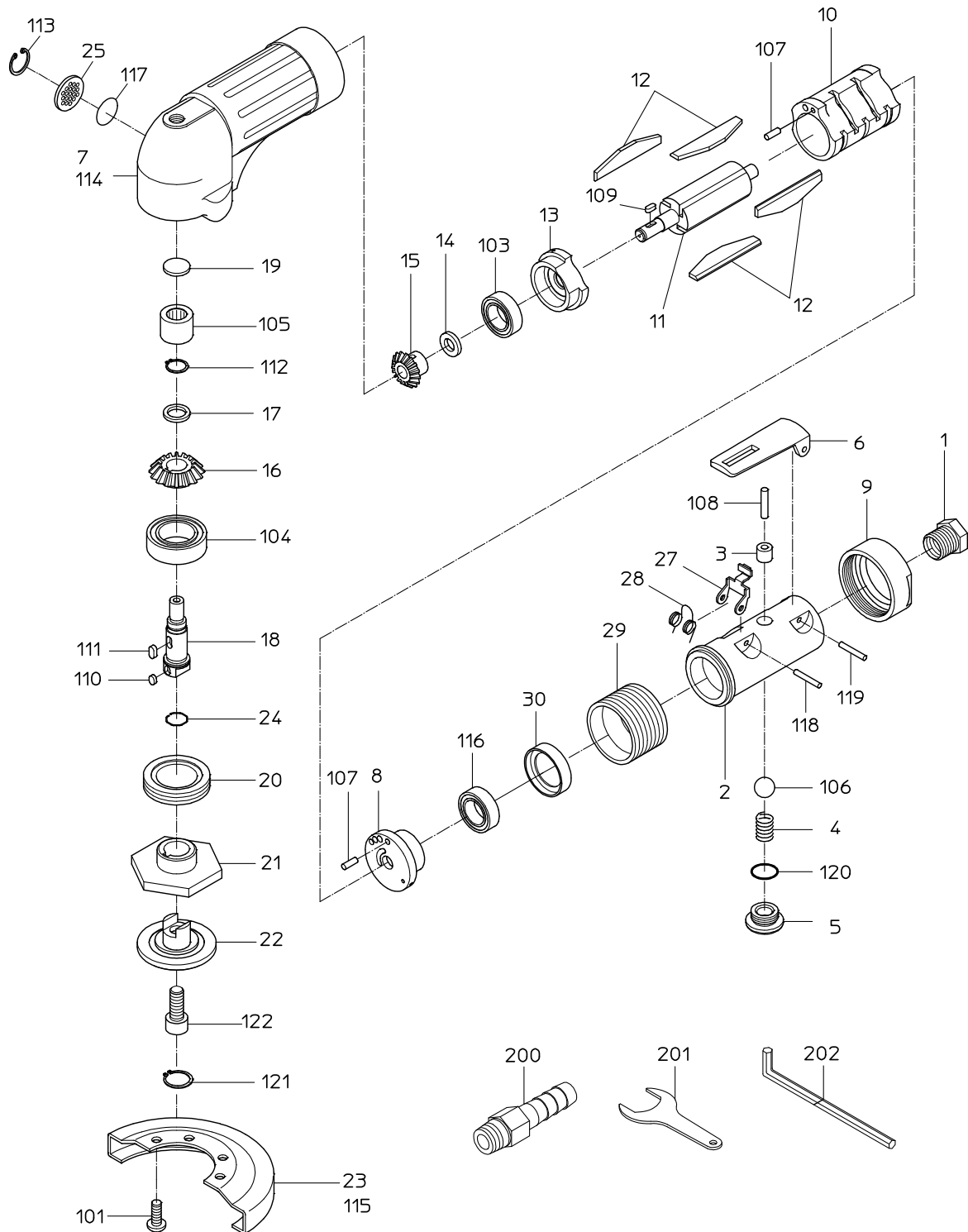


# PARTS LIST

## NAG-1FLW-05

505216



NIPPON PNEUMATIC MFG. CO., LTD.

# PARTS LIST

(1/2)

MODEL : **NAG-1FLW-05**

505216

ITEM	PART NO.	PART NAME	Q' ty
1	15204080	INLET BUSHING	1
2	Not available separately. Available only as HANDLE WB or HANDLE CP (P/No. 15015261 No. 15016045)	HANDLE	1
3	Not available separately. Available only as HANDLE WB or HANDLE CP (P/No. 15015261 No. 15016045)	THROTTLE BUSH	1
4	15102340	THROTTLE SPRING	1
5	15005490	THROTTLE PLUG	1
6	15016036	LEVER	1
7	15016148	ROTOR CASE	1
8	15016146	TOP PLATE	1
9	15005530	LOCK NUT	1
10	15015780	CYLINDER	1
11	15016074	ROTOR	1
12	15016098	VANE	4
13	15016075	BOTTOM PLATE	1
14	15005250	ROTOR WASHER	1
15	15016226	ROTOR GEAR	1
16	15005270	SPINDLE GEAR	1
17	15005260	SPINDLE WASHER	1
18	15016072	STONE SPINDLE	1
19	15015790	WASHER	1
20	15007100	SPINDLE NUT	1
21	15005431	STONE FLANGE	1
22	15016062	WHEEL NUT	1
23	15005440	STONE COVER	1
24	15007130	STOPPER RING	1
25	15015773	EXHAUST COVER	1
27	15005520	STOPPER	1
28	15008230	SPRING	1
29	15005010	AIR CONNECTOR	1
30	15016127	CAP	1
101	28100729	CAP SCREW	4
103	28201186	BALL BEARING	1
104	28201189	BALL BEARING	1
105	28203082	NEEDLE BEARING	1
106	28205051	RUBBER BALL	1
107	28206036	PIN	2
108	28207233	ROLLER PIN	1
109	28209010	KEY	1
110	28209015	KEY	1
111	28209016	KEY	1
112	25307480	RETAINING RING	1
113	25307922	RETAINING RING	1
114		NAME PLATE	1
115		NAME PLATE	1
116	28201185	BALL BEARING	1
117	25401270	O RING	1
118	28208061	SPRING PIN	1
119	25305020	SPRING PIN	1
120	61200120	O RING	1
121	25307600	RETAINING RING	1
122	74008020	CAP SCREW	1
201	24999116	SINGLE ENDED SPANNER	1

# PARTS LIST

(2/2)

MODEL : **NAG-1FLW-05**

505216

ITEM	PART NO.	PART NAME	Q' ty
202	25004060	SPANNER	1
	ASSY LIST		
	15016045	HANDLE CP	
	1, 2, 3, 4, 5, 6, 9, 27, 28, 106, 108, 118, 119, 120		
	15015261	HANDLE WB	
	2, 3		
	15015991	STONE COVER CP	
	23, 115		