

# User's Manual

## PA-9048

### RIVETER ADAPTOR



## Safety Instructions

Please note the following safety instructions to avoid malfunctions, damage or physical injury:

1. Please observe all safety notes of the used driving tool (drill.)
2. Always switch off the driving tool and pull the power plug before maintaining the blind rivet attachment, e.g. changing the nose pieces or when not in use.
3. Only use the blind rivet attachment as indicated in this manual for setting blind nuts. **The unit is not designed for continuous, professional use.**
4. Always secure the work piece.
5. Do not wear loose clothing or jewelry. Tie up hair or clothing so it cannot get caught in moving parts.
6. Only use the blind rivet attachment with the included nosepieces.
7. Should the unit become damaged do not use it and have it repaired by a professional or contact our customer support department. Do not disassemble the unit or try repairing it yourself.
8. Suitable for aluminium, aluminium / steel and all steel rivets.
9. **Not suitable for stainless steel rivets.**
10. **Not for use with impact drivers or drills in hammer mode.**

## PA-9048

Dimensions	59mm x158mm(2-11/32 x 6-3/16 inch)
Net Weight	318g=0.70 lbs
Gross Weight	368g=0.81 lbs
Nosepiece	2.4mm(3/32), 3.2mm(1/8)
	4.0mm(5/32), 4.8mm(3/16)
Hex Shank	1/4" (6.35 mm)
Cordless Drill	12V 14.4V 18V
Reversible electric	3/8" Drill
Reversible pneumatic	3/8" Drill
Min. Torque Strength	11 Nm = 8 ft/lbs
Max. rpm	1,000 rpm



1 Hex Shank	1/4 (6.35 mm)
2 Housing	PA+GF
3 Nosepiece	2.4mm , 3.2mm, 4.0mm, 4.8mm
4 Sight Window	Blind Rivet Loading
5 Wrench	1PC

## Operational Instructions



1. Insert the rivet into the tool.



2. Position the rivet into the hole. Ensure the drill is in forwards gear. While holding the body of the attachment with the handle to stop it from rotating, press the trigger. This will fasten the rivet.



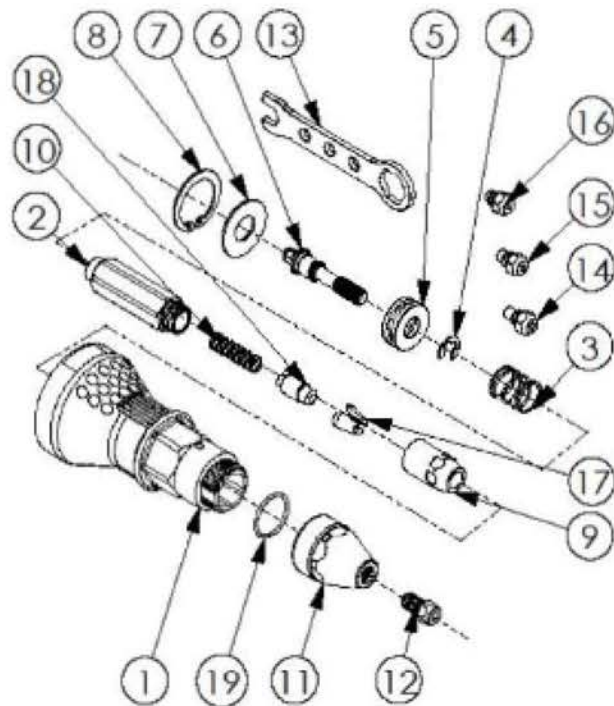
3. **IMPORTANT!!** Change the drill to reverse. While still holding the body of the attachment with the handle to stop it from rotating, press trigger. This will eject the mandrel.

View the demonstration video at  
[www.mighty-seven.com](http://www.mighty-seven.com)



## 4.8mm(3/16") Riveter Adaptor Item No : PA-9048

● The consumable parts    ▲ The replacement parts    ★ The non-replacement parts



## Part List

Item No : PA-9048



No	Part No	Description	Q'ty
1	PA-9048P01	Housing 4.8	1
2	PA-9048P02	Tube	1
3	PA-9048P03	Spring	1
4	PA-9048P04	E-Ring	1
5	PA-9048P05	Bearing	1
6	PA-9048P06	Screw 6.4	1
7	PA-9048P07	Washer	1
8	PA-9048P08	R-Ring	1
9	PA-9048P09	Jaw Tube	1
10	PA-9048P10	Spring 4.8	1
11	PA-9048P11	Housing Head 4.8	1
12	PA-9048P12	Nose 4.8	1
13	PA-9048P13	Spanner	1
14	PA-9048P14	Nose 4.0	1
15	PA-9048P15	Nose 3.2	1
16	PA-9048P16	Nose 2.4	1
17	PA-9048T17	Jaw (2 PCS)	1 SET
18	PA-9048P18	Jaw Pusher	1
19	PA-9048P19	Washer 1.0	1