

The operating manual of Shut-off Screwdriver



- How to change the bits



Push the directional switch and plug in the bit to the center.

- How to lubricate this air tool

Inject 2~3 C.C air tool oil from the inlet of tool for extended using period.



- How to set up the desired torque

1. Open the adjustment cover



2. Use the screwdriver to adjust the torque.

(1) Turn the screwdriver forward to adjust the higher torque. (H)

(2) Turn the screwdriver reversal to adjust the lower torque. (L)



3. Close the adjustment cover



4. Test the torque of shut-off screwdriver by digital torque tester for confirming the torque which is suitable.



5. The instruction button

(1) The reversal button by push with turn



(2) The forward button by turn back

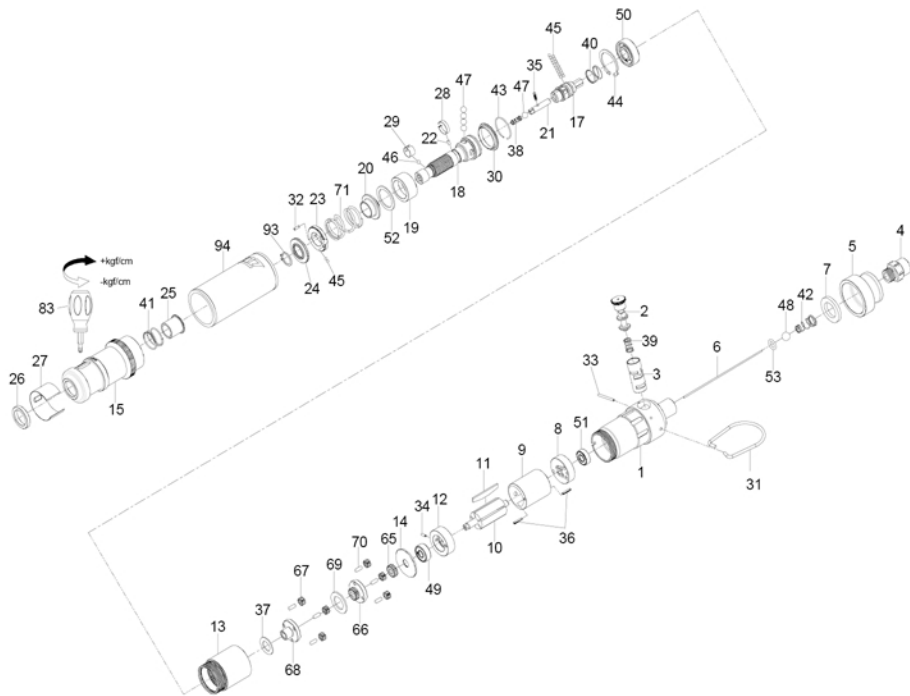




Shut off screwdriver

Item No : RA-4015

● The consumable parts ▲ The replacement parts ★ The non-replacement parts



Part List

Item No : RA-4015



NO.	PART NO.	DESCRIPTION	QTY	
★	1	RA-4015T01	Housing Assembly (01.03)	1 set
★	2	RA-4015P02	Reverse Valve	1
★	3	---	Reverse Valve Bushing	1
★	4	RA-4015P04	Air Inlet	1
★	5	RA-4015P05	Exhaust Deflector	1
▲	6	RA-4015P06	Throttle Valve Plunger	1
★	7	RA-4015P07	Muffler Element	1
★	8	RA-4015P08	Rear End Plate	1
★	9	RA-4015P09	Cylinder	1
★	10	RA-4015P10	Rotor	1
●	11	RA-4015T11	Rotor Blade (5PCS)	1 set
★	12	RA-4015P12	Front End Plate	1
★	13	RA-4015P13	Gear Housing	1
★	14	RA-4015P14	Washer	1
★	15	RA-4015P15	Hammer Case	1
▲	17	RA-4015P17	Cam Spindle	1
▲	18	RA-4015P18	Standard Anvil	1
▲	19	RA-4015P19	Cam Ring	1
▲	20	RA-4015P20	Spring Collar	1
★	21	RA-4015P21	Driving Shaft	1
★	22	RA-4015P22	Pin	1
▲	23	RA-4015P23	Adjustment Nut	1
▲	24	RA-4015P24	Adjustment Lock Ring	1
★	25	RA-4015P25	Bushing	1
★	26	RA-4015P26	Retainer	1
★	27	RA-4015P27	Adjustment Cover	1
★	28	RA-4015P28	Band	1
●	29	RA-4015P29	Band	1
★	30	RA-4015P30	Ball Holder	1
★	31	RA-4015P31	Hanger	1
★	32	RA-4015P32	Pin	1
★	33	RA-4015P33	Pin	1

NO.	PART NO.	DESCRIPTION	QTY	
★	34	RA-4015P34	Spring Pin	1
★	35	RA-4015P35	Pin	1
★	36	RA-4015T36	Spring Pin (2PCS)	1 set
★	37	RA-4015P37	Gasket	1
★	38	RA-4015P38	Spring	1
★	39	RA-4015P39	Spring Valve Plunger	1
★	40	RA-4015P40	Spring	1
★	41	RA-4015P41	Spring	1
★	42	RA-4015P42	Spring	1
★	43	RA-4015P43	Retainer	1
★	44	RA-4015P44	Retainer	1
★	45	RA-4015T45	Steel Ball (21PCS)	1 set
●	46	RA-4015P46	Steel Ball	1
★	47	RA-4015T47	Steel Ball (5PCS)	1 set
▲	48	RA-4015P48	Steel Ball	1
▲	49	RA-4015P49	Ball Bearing	1
▲	50	RA-4015P50	Ball Bearing	1
▲	51	RA-4015P51	Ball Bearing	1
★	52	RA-4015P52	Gasket	1
★	53	RA-4015P53	O-Ring	1
▲	65	RA-4015P65	Pinion Gear	1
▲	66	RA-4015P66	Work Spinner	1
▲	67	RA-4015T67	Planet Gear (6PCS)	1 set
▲	68	RA-4015P68	Work Spinner	1
★	69	RA-4015P69	Washer	1
▲	70	RA-4015T70	Pin (6PCS)	1 set
▲	71	RA-4015P71	Spring	1
★	83	RA-4015P83	Screwdriver	1
★	93	RA-4015P93	Retainer	1
★	94	RA-4015P94	Rubber Grip	1