

Read this manual carefully before installing, operating, servicing or repairing.

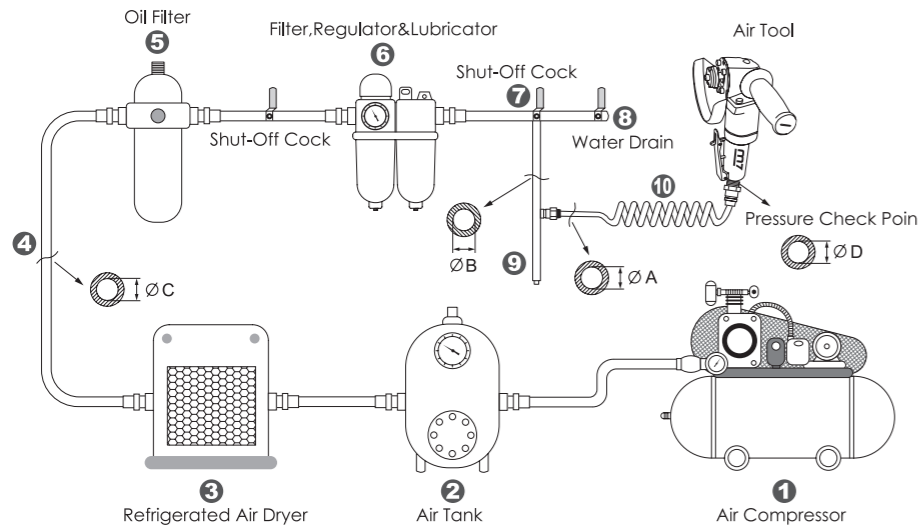
Working environment:

- Using these tools in any potentially explosive environment is strictly prohibited.
- It is always recommended that these types of tools must be operated when standing on a solid or firm location.
- Always use these tools in a well ventilated area.
- Slipping, stumbling and falling are the major causes of potential serious injury, therefore, a clean and clutter free surface in the working area before operating the tools is strongly recommended.

Air supply and connection requirements:

- The maximum recommended air pressure during operation must not exceed 90 psi (6.3bar). Higher air pressure may create unsafe operating conditions for the tool and the user.
- The compressed air should be cooled and have a water filter installed at the outlet end of the compressor. Even with a water filter installed, some water may still condense in the piping or hose and will enter the tool mechanism causing premature damage to the tool. Therefore, it is recommended to install an air filter-lubricator device somewhere between the tool and the compressor.
- Always use an air compressor of the proper capacity to operate each tool.
- Clean the hose with a blast of compressed air before connecting the hose to the air tool. This will prevent both moisture and dust inside the hose from entering the tool and causing possible rust or malfunction.

Ideal system connection:



Piping diameters and length requirement:

- ★The diameter ΦA required for the inlet pipe (10) is recommended on the specification table.
- ★The diameter ΦB required for the branch pipe (from 7 to 9) should be 2 times as large as ΦA. $\Phi B = 2 \times \Phi A$
- ★The diameter ΦC required for the primary air supply (from 1 to 3) should be 3 times as large as ΦA. $\Phi C = 3 \times \Phi A$
- ★The length for the inlet pipe (10) should be less than 15 feet (4.5m).

Item No.	Pad Dia inch	Spindle Size inch	Free Speed R.P.M	Ave. Air Consumption CFM	Air Pressure PSI	Overall Length mm	Net Weight kg	Air Hose ID mm	Water Hose ID mm	Sound Pressure dBA	Vibration level m/s²
QB-603L	3"	5/8"-11	4500	15.1	90	206	2.2	6.5	5.0	82.3	0.6
QB-603	3"	5/8"-11	4500	15.1	90	206	2.2	6.5	5.0	82.3	0.6

Uncertainty K=0.5a if a < 5 m/s² or K=0.4a if a > 5 m/s²

Warning:

- This tool should only be used as a hand operated tool. It is powered by compressed air and is not insulated against electric shock.
- This tool is specially designed for grinding sharp edges, burrs or surfaces on certain spots or inner holes for polishing and smoothing. Any application or use of this tool other than what it is designed for is strictly prohibited.
- High sound levels may cause hearing damage. Always wear hearing protection when operating this tool.
- Wearing eye/face protection can reduce the danger of high-speed materials being emitted from the tool.
- User must wear proper clothing. Loose clothing, long hair, stings, straps, belts and jewelry should not be worn when operating this tool.
- Working with certain materials can create dust and fumes, which may cause a potential explosive environment and a hazard to the health. Therefore, wearing proper breathing protection and taking preventive measures are recommended.
- Always wear gloves to reduce the risk of cuts or burns.
- Make sure that all the specifications of the shank stone to be used are compatible with this tool.
- Inspect the shank stone carefully before use. Use of chipped, cracked or otherwise defective implements will create an unsafe condition.
- Make sure that the allowed operating speed of the grinding shank stone is higher than this tool.
- Make certain that the minimum gripping length on the stem of shank stone should be 10mm observed.
- Make sure that the shank stone is correctly mounted and tightened before use. Then, run the tool at no-load for 30 seconds in a safe location to check the function and rotating direction. Stop immediately if there's considerable vibration or any other defects.
- Ensure that the work piece is properly supported or fixed before operating.
- Ensure that there is no bystander in the vicinity of working area.
- Make sure that the direction of the sparks generated from the grinding shank stone is properly directed so as not to create a hazard.
- Release the throttle lever to avoid danger if there is a failure of energy supply and when connecting or disconnecting the air hose.
- To prevent an accidental start and cause a hazard, rest the idle grinder in a stable position.
- Always turn off the air supply and disconnect the air hose before replacing grinding shank stone or making adjustments on the tool.
- Examine the shank stone thoroughly before re-use if this tool has been dropped.
- Beware if the compressed air hose breaks unexpectedly, or is being connected or disconnected improperly. This whipping action may cause injury.
- Prolonged use will cause user fatigue. Periodic breaks are recommended for user safety.
- It is recommended to stop operating the tool whenever the user experiences discomfort, tingling or pain during use.
- Make sure there is no gas or combustible material stored near the tool when servicing, changing insert tools, or storage.
- Avoid storing this tool where it is subject to high humidity.



EC DECLARATION OF CONFORMITY



Original Language
Serial Number: Please refer to the tool
Air Angle Grinders
Item No.: QB-603 QB-603L 6.3 bar (90. psi)

We declare under our own responsibility that the above machinery fulfils all the relevant provisions of (MD) Machinery Directive 2006/42/EC and its amendment and is manufactured and tested according to the following standards:
EN ISO 11148-7 / EN ISO 15744 / EN ISO 28927-1

Declared in: Taichung, Taiwan
Date: 2013/06/01

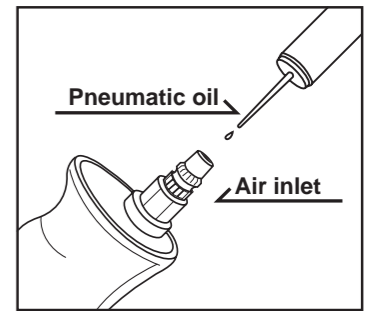
Signature
Jonney Chen
Jonney Chen
Declared by: QA Manager

Manufacturer:
Mighty Seven International Co., Ltd.
No. 70-25, Ching Qunag Rd., Wu-Jih Shiang,
Taichung Hsien, 41466 Taiwan
www.mighty-seven.com

Authorized contact, to compile the technical files :
King Tony France
3 Rue des imprimeurs ZI République Nord 1.
86000 POITIERS FRANCE
TEL : (+33) 5-49-30-30-90
E-MAIL : christian.aubineau@kingtony.eu

Maintenance:

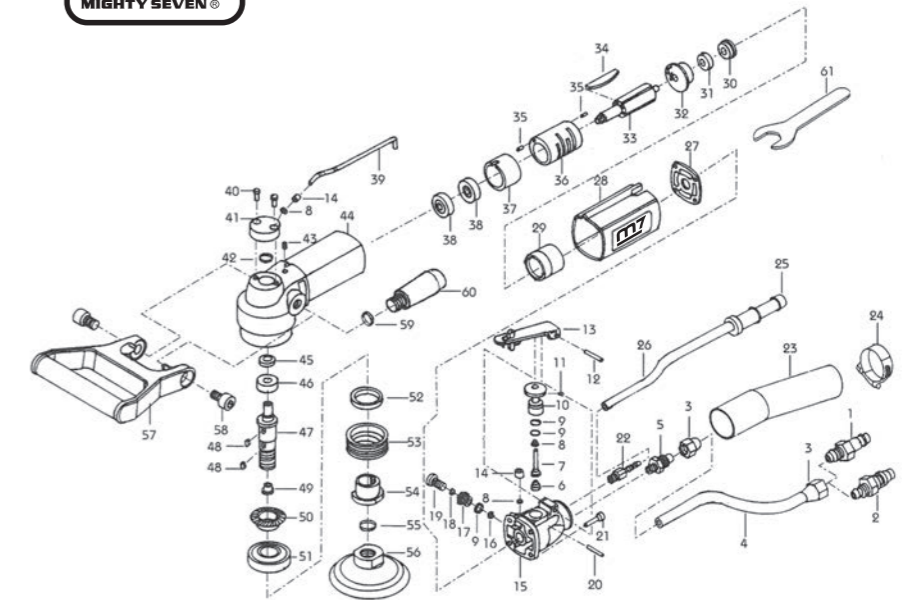
- Before connecting the air hose to this tool or after operating, apply 4 or 5 drops of pneumatic oil into the air inlet and run it for several seconds, referring this operation to the attached picture.
- Maintain this tool regularly by performing the same oiling application every 3 to 4 hours of operation.
- Do not lubricate tools with flammable or volatile liquids. Use only the lubricant recommended by Mighty-Seven or authorized dealers. Any other lubricant will lead to reduce performance of the tool and permanent damage. Whenever any unauthorized lubricant is used by accident, flush it immediately with recommended pneumatic oil.
- Follow all the recycling laws of waste disposal once this tool is no longer usable.



Regular maintenance



Air Wet Stone Polisher
Item No : QB-603 / QB-603L



No.	Part No.	Description	Q'ty
1	QB-603LP01	Quick Joint (PT 19)	1
3	QB-603LT03	Hose Adaptor (2 PCS)	1 SET
4	QB-603LP04	Air Hose	1
5	QB-603LP05	Air Inlet Nozzle	1
6	QB-603LP06	Spring	1
7	QB-603LP07	Valve Pin	1
8	QB-603LT08	O-Ring (3 PCS)	1 SET
9	QB-603LT09	O-Ring (3 PCS)	1 SET
10	QB-603LP10	Air Plunger	1
11	QB-603LP11	Riveter	1
12	QB-603LP12	Spring Pin	1
13	QB-603LP13	Throttle Lever	1
14	QB-603LP14	Brass Cover (2 PCS)	1 SET
15	QB-603LP15	Exhaust Plate Set	1
16	QB-603LP16	E-Ring	1
17	QB-603LP17	Bushing	1
18	QB-603LP18	O-Ring	1
19	QB-603LP19	Water Inlet	1
20	QB-603LP20	Pin	1
21	QB-603LT21	Csp Screw (4 PCS)	1 SET
22	QB-603LP22	Water Valve	1
23	QB-603LP23	Exhaust Hose	1
24	QB-603LP24	Retainer Ring	1
25	QB-603LP25	Water Valve	1
26	QB-603LP26	Water Hose	1
27	QB-603LP27	Gasket	1
28	QB-603LP28	Rubber Sleeve	1
29	QB-603LP29	Cylinder Bushing	1
30	QB-603LP30	Dust-Proof Plug	1
31	QB-603LP31	Bearing	1
31	QB-197P31	Spring Pin (3x25)	1

No.	Part No.	Description	Q'ty
32	QB-603LP32	Rear Cylinder Cap	1
33	QB-603LP33	Rotor	1
34	QB-603LT34	Blade (4 PCS)	1 SET
35	QB-603LT35	Spring Pin (2 PCS)	1 SET
36	QB-603LP36	Cylinder	1
37	QB-603LP37	Cylinder Cap	1
38	QB-603LT38	Bearing (2 PCS)	1 SET
39	QB-603LT39	Water Inlet Tube (2 PCS)	1 SET
40	QB-603LT40	Screw (2 PCS)	1 SET
41	QB-603LP41	Water Inlet Transfer Pos	1
42	QB-603LP42	O-Ring	1
43	QB-603LP43	Set Screw	1
44	QB-603LP44	Body	1
45	QB-603LP45	Oil Seal	1
46	QB-603LP46	Bearing	1
47	QB-603LP47	Main Shaft	1
48	QB-603LP48	Key (2 PCS)	1 SET
49	QB-603LP49	Water Exit	1
50	QB-603LP50	Spiral Gear	1
51	QB-603LP51	Bearing	1
52	QB-603LP52	Oil Seal	1
53	QB-603LP53	Lock Screw Cap	1
54	QB-603LP54	Wheel Holder Flange	1
55	QB-603LP55	O-Ring	1
56	QB-603LP56	Sanding Pad	1
57	QB-603LP57	C Handle	1
58	QB-603LP58	Screw (2 PCS)	1 SET
59	QB-603LP59	O-Ring	1
60	QB-603LP60	Side Handle	1
61	QB-603LP61	Open Spanner	1