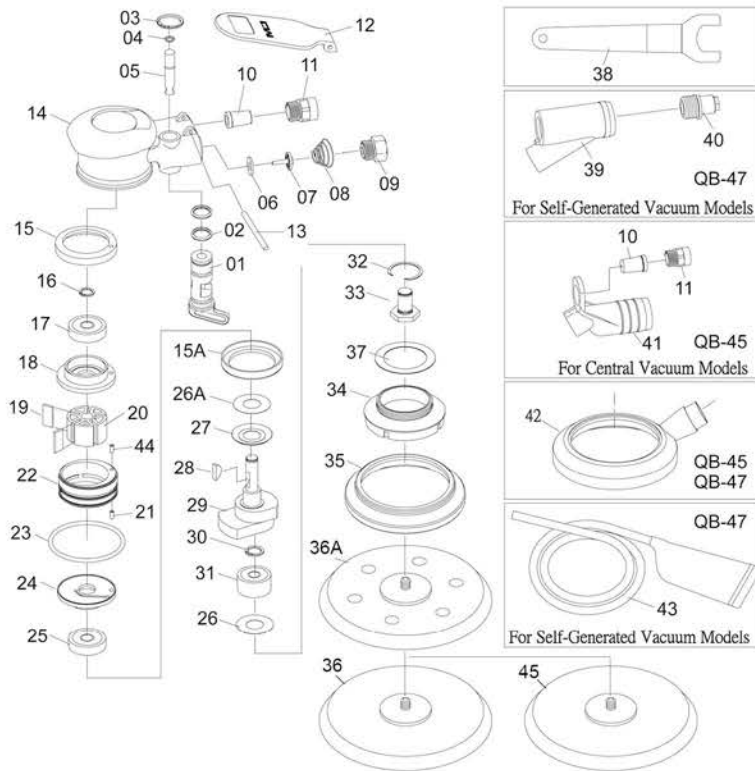




Air Sander Item No : QB-45-46-47



● The consumable parts ▲ The replacement parts ★ The non-replacement parts



Part List QB-45-46-47

	NO.	INDEX NO.	DESCRIPTION	Q'TY
★	1	QB-45P01	Speed controller	1
▲	2	QB-45T02	O-Ring (2pcs)	1set
★	3	QB-45P03	Retaining Ring	1
▲	4	QB-45P04	O-Ring	1
★	5	QB-45P05	Valve Stem	1
★	6	QB-45P06	Washer	1
★	7	QB-45P07	Valve	1
★	8	QB-45P08	Spring	1
★	9	QB-45P09	Air Inlet Bushing	1
●	10	QB-45P10	Cone Muffler	1
★	11	QB-45P11	Exhaust Hood	1
★	12	QB-45P12	Throttle Lever	1
★	13	QB-45P13	Spring Pin	1
★	14	QB-45P14	Motor Housing	1
★	15	QB-45P15	Rubber Bushing	1
★	15A	QB-45P15A	Rubber Bushing	1
▲	16	QB-45P16	Retaining Ring	1
▲	17	QB-45P17	Ball Bearing	1
▲	18	QB-45P18	Rear End Plate	1
●	19	QB-45T19	Rotor Blades (5pcs)	1set
●	20	QB-45P20	Rotor	1
★	21	QB-45P21	Spring Pin	1
★	22	QB-45P22	Cylinder	1
▲	23	QB-45P23	O-Ring	1
▲	24	QB-45P24	Front End Plate	1

	NO.	INDEX NO.	DESCRIPTION	Q'TY
●	25	QB-45P25	Ball Bearing	1
★	26	QB-45P26	Washer (0.5mm)	1
★	26A	QB-45P26A	Washer (0.4mm)	1
★	27	QB-56P27	Washer	1
▲	28	QB-56P28	Woodruff Key	1
★	29	QB-56P29	Balancer Shaft (Pad of 5")	1
★	29A	QB-45P29A	Balancer Shaft (Pad of 6")	1
▲	30	QB-45P30	Retaining Ring	1
●	31	QB-45P31	Ball Bearing	1
▲	32	QB-45P32	Retaining Ring	1
▲	33	QB-45P33	Working Spindle	1
★	34	QB-45P34	Housing Cover	1
★	35	QB-45P35	Shroud (for QB-46)	1
●	36	QB-45P36	5" Hook-Face Pad (for QB-46)	1
●	36A	QB-45P36A	6" Hook-Face Pad (for QB-45 & QB-47)	1
★	37	QB-45P37	Washer	1
★	38	QB-45P38	Pad Wrench	1
★	39	QB-45P39	Vacuum Adaptor (for QB-47)	1
★	40	QB-45P40	Muffler Body (for QB-47)	1
★	41	QB-45P41	Vacuum Adaptor (for QB-45)	1
★	42	QB-45P42	Shroud (for QB-45 & QB-47)	1
★	43	QB-45P43	Rubber Hose+Bag (for QB-47)	1
★	44	QB-45P44	Spring Pin	1
●	45	QB-45P45	6" Hook-Face Pad (for QB-46)	1