

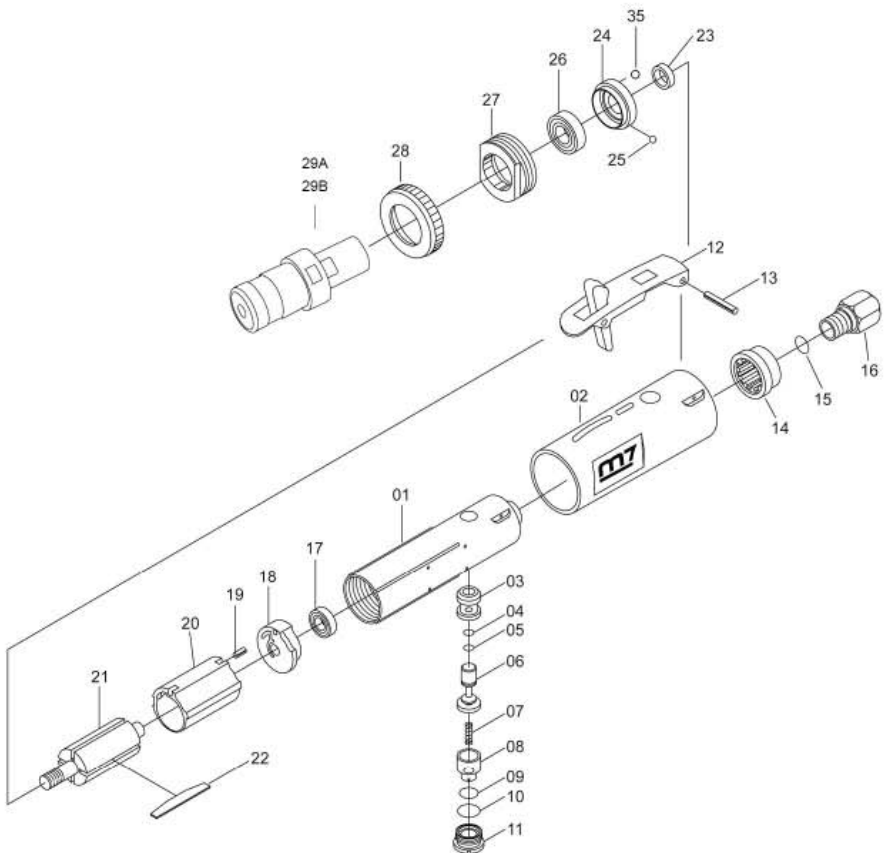


1/4" Air Die Grinder

Item No : QA-210



● The consumable parts ▲ The replacement parts ★ The non-replacement parts



Part List QA-210

	NO.	PART NO.	DESCRIPTION	Q'TY
★	1	QA-210P01	Motor Housing	1
★	2	QA-210P02	Grip	1
★	3	QA-210P03	Throttle Bushing	1
▲	4	QA-210P04	O-Ring	1
▲	5	QA-210P05	O-Ring	1
★	6	QA-210P06	Valve Stem	1
★	7	QA-210P07	Spring	1
★	8	QA-210P08	Regulator	1
▲	9	QA-210P09	O-Ring	1
▲	10	QA-210P10	O-Ring	1
★	11	QA-210P11	Throttle Valve Plug	1
★	12	QA-210P12	Throttle Lever	1
★	13	QA-210P13	Spring Pin	1
★	14	QA-210P14	Exhaust Plate	1
▲	15	QA-210P15	O-Ring	1
★	16	QA-210P16	Air Inlet Bushing	1
▲	17	QA-210P17	Ball Bushing	1
▲	18	---	Rear End Plate	1
▲	19	---	Spring Pin	1
★	20	QA-210P20	Cylinder	1
★	21	QA-210P21	Rotor	1
●	22	QA-210T22	Rotor Blade (4pcs)	1 set
▲	23	QA-210P23	Rotor Collar	1
▲	24	---	Front End Plate	1
▲	25	---	Steel Ball	1
▲	26	QA-210P26	Ball Bearing	1
★	27	QA-210P27	Motor Clamp	1
★	28	QA-210P28	Clamp Nut	1
▲	29	QA-210T29A	Quick Release Collet (6mm)	1 set
▲	29	QA-210T29B	Quick Release Collet (1/4")	1 set
▲	35	---	Steel Ball	1
★		QA-210T01	Rear End Plate Ass'y (18.19)	1 set
★		QA-210T02	Front End Plate Ass'y (35.24.25)	1 set