

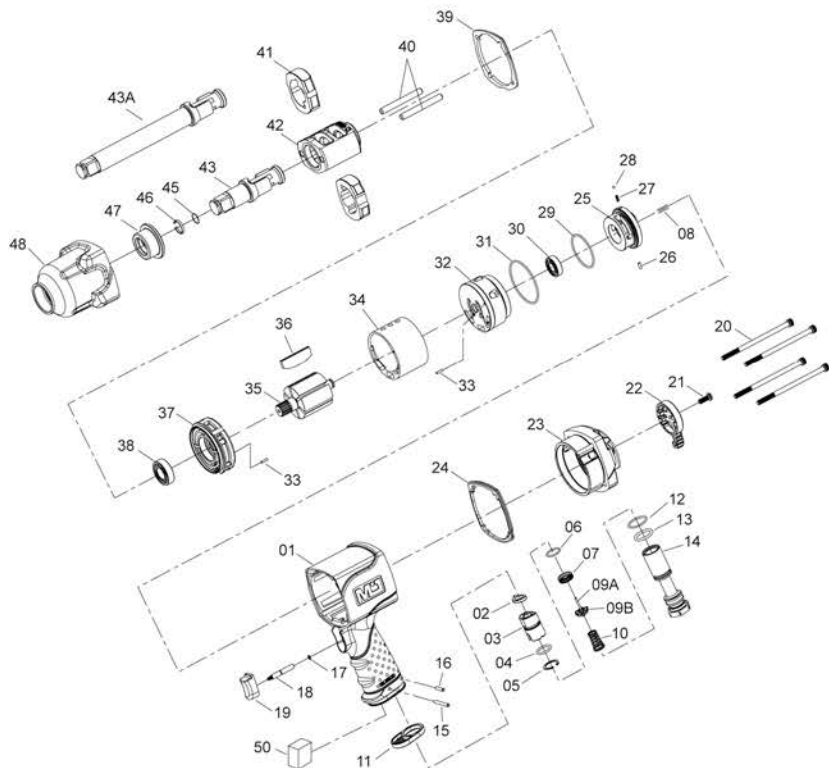


1" Air Impact Wrench

Item No : NC-8212



● The consumable parts ▲ The replacement parts ★ The non-replacement parts



Part List New Twin Hammer Type NC-8212

NO.	INDEX NO.	DESCRIPTION	Q'TY	NO.	INDEX NO.	DESCRIPTION	Q'TY	
X	01	---	1	★	39	NC-8212P39	Front Gasket	1
X	02	---	1	▲	40	NC-8212T40	Hammer Pin (2 pcs)	1 set
X	03	---	1	▲	41	NC-8212T41	Hammer (2 pcs)	1 set
★	04	NC-8212P04	1	▲	42	NC-8212P42	Hammer Cage	1
★	05	NC-8212P05	1	X	43	---	Anvil	1
★	06	NC-8212P06	1	X	43A	---	8" Extended Anvil	1
★	07	NC-8212P07	1	X	45	---	O-Ring	1
X	08	---	1	X	46	---	Socket Retainer	1
X	09A	---	1	X	47	---	Bushing	1
X	09B	---	1	X	48	---	Hammer Case	1
★	10	NC-8212P10	1	▲	50	NC-8212P50	Muffler Element	1
★	11	NC-8212P11	1	★		NC-8212T01	Motor Housing Assembly (01.02.03)	1 set
★	12	NC-8212P12	1	★		NC-8212T02	Throttle Valve Assembly (09A.09B)	1 set
★	13	NC-8212P13	1	★		NC-8212T03	Trigger Assembly (18.19)	1 set
★	14	NC-8212P14	1	★		NC-8212T04	Rear End Plate & Reverse Valve Assembly (08.23.25.26.27.28.29.30.31.32)	1 set
★	15	NC-8212P15	1	★		NC-8212T05	Hammer Case Assembly (47.48)	1 set
★	16	NC-8212P16	1	★		NC-8212T43	Anvil Assembly (43.45.46)	1 set
★	17	NC-8212P17	1	★		NC-8212T43A	8" Extended Anvil Assembly (43A.45.46)	1 set
X	18	---	1					
X	19	---	1					
★	20	NC-8212T20	1 set					
★	21	NC-8212P21	1					
★	22	NC-8212P22	1					
X	23	---	1					
★	24	NC-8212P24	1					
X	25	---	1					
X	26	---	1					
X	27	---	1					
X	28	---	1					
X	29	---	1					
X	30	---	1					
X	31	---	1					
X	32	---	1					
★	33	NC-8212T33	1					
★	34	NC-8212P34	1					
★	35	NC-8212P35	1					
★	36	NC-8212T36	1 set					
★	37	NC-8212P37	1					
▲	38	NC-8212P38	1					