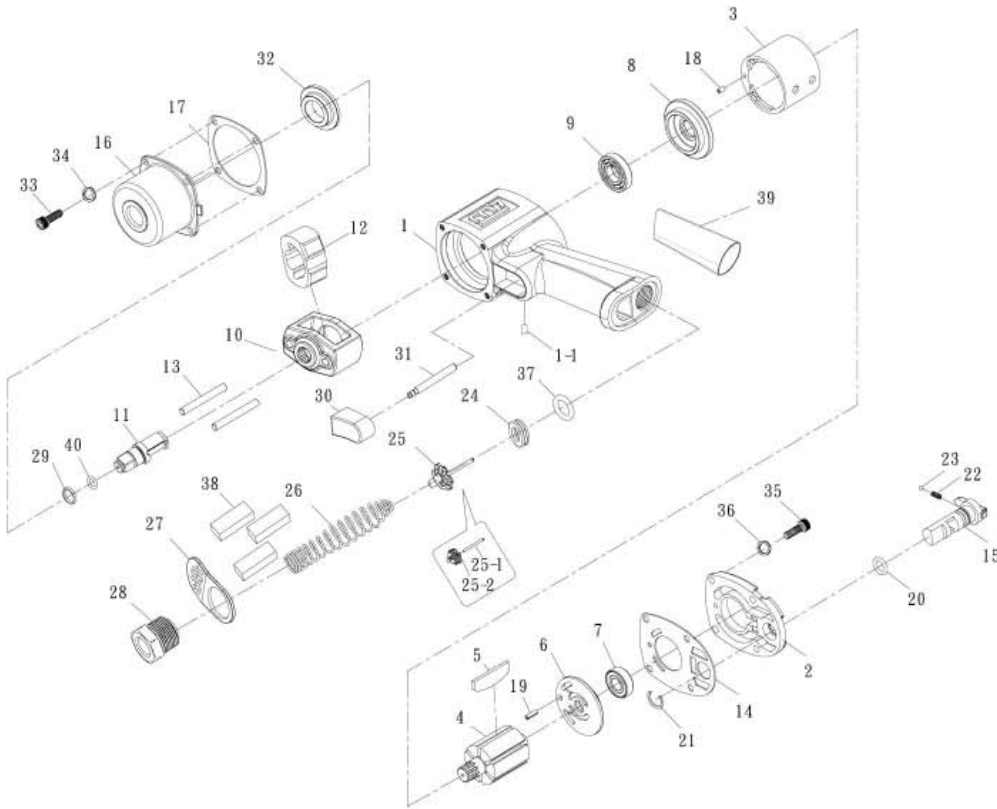




3/8" Air Impact Wrench

Item No : NC-3610Q

● The consumable parts ▲ The replacement parts ★ The non-replacement parts



Part List

Jumbo Hammer Type



NC-3610Q

| NO. | PART NO. | DESCRIPTION | Q'TY | NO. | PART NO. | DESCRIPTION | Q'TY | | |
|-----|----------|-------------|------------------------|-------|----------|-------------|------------|--------------------------------------|-------|
| ★ | 1 | NC-3610T01 | Housing Ass'y (1, 1-1) | 1 set | ★ | 22 | NC-3610P22 | Spring | 1 |
| ★ | 1-1 | --- | Screw | 1 | ★ | 23 | NC-3610P23 | Steel Ball | 1 |
| ★ | 2 | NC-3610P02 | Backhead | 1 | ★ | 24 | NC-3610P24 | Throttle Valve Seat | 1 |
| ★ | 3 | NC-3610P03 | Cylinder | 1 | ★ | 25 | NC-3610T25 | Throttle Valve Assembly (25-1, 25-2) | 1 set |
| ★ | 4 | NC-3610P04 | Rotor | 1 | ★ | 25-1 | --- | Throttle Valve Pin | 1 |
| ● | 5 | NC-3610T05 | Rotor Blade (6pcs) | 1 set | ★ | 25-2 | --- | Throttle Valve | 1 |
| ▲ | 6 | NC-3610P06 | Rear End Plate | 1 | ★ | 26 | NC-3610P26 | Spring | 1 |
| ▲ | 7 | NC-3610P07 | Ball Bearing | 1 | ★ | 27 | NC-3610P27 | Exhaust Deflector | 1 |
| ▲ | 8 | NC-3610P08 | Front End Plate | 1 | ★ | 28 | NC-3610P28 | Air Inlet | 1 |
| ▲ | 9 | NC-3610P09 | Ball Bearing | 1 | ● | 29 | --- | Socket Retainer | 1 |
| ▲ | 10 | NC-3610P10 | Hammer Frame | 1 | ★ | 30 | NC-3610T30 | Trigger (30, 31) | 1 set |
| ● | 11 | --- | Standard Anvil | 1 | ★ | 31 | --- | Trigger Pin | 1 |
| ● | 12 | NC-3610P12 | Hammer | 1 | ★ | 32 | NC-3610P32 | Bushing | 1 |
| ▲ | 13 | NC-3610T13 | Hammer Pin (2 pcs) | 1 set | ★ | 33 | NC-3610T33 | Screw (4pcs) | 1 set |
| ● | 14 | NC-3610P14 | Gasket | 1 | ★ | 34 | NC-3610T34 | Washer (4pcs) | 1 set |
| ★ | 15 | NC-3610P15 | Reverse Valve | 1 | ★ | 35 | NC-3610T35 | Screw (4pcs) | 1 set |
| ★ | 16 | NC-3610P16 | Hammer Case | 1 | ★ | 36 | NC-3610T36 | Washer (4pcs) | 1 set |
| ● | 17 | NC-3610P17 | Gasket | 1 | ▲ | 37 | NC-3610P37 | O-Ring | 1 |
| ★ | 18 | NC-3610P18 | Spring Pin | 1 | ● | 38 | NC-3610T38 | Muffler Element (3pcs) | 1 set |
| ★ | 19 | NC-3610P19 | Spring Pin | 1 | ● | 39 | NC-3610P39 | Rubber Grip | 1 |
| ● | 20 | NC-3610P20 | O-Ring | 1 | ● | 40 | --- | O-Ring | 1 |
| ★ | 21 | NC-3610P21 | Retainer | 1 | ● | | NC-3610T11 | Standard Anvil Ass'y (11, 29, 40) | 1 set |