

1T TO 10T BEAM CLAMP

OPERATOR'S MANUAL



Part No:

| | |
|--------------|------------------------|
| TM9121-01023 | 1T X 230MM BEAM WIDTH |
| TM9121-02023 | 2T X 230MM BEAM WIDTH |
| TM9121-03032 | 3T X 320MM BEAM WIDTH |
| TM9121-05032 | 5T X 320MM BEAM WIDTH |
| TM9121-10032 | 10T X 320MM BEAM WIDTH |

Ver: 1.0

Serial: _____

Buyer to record serial number above



This beam clamp should not be installed, operated or maintained by any person who has not read all the contents of these general instructions. Failure to read and comply with these instructions or any of the limitations noted herein can result in bodily injury and/or property damage.



TESTED & CERTIFIED TO AS 4991

LIMITED WARRANTY

Industrial Tool & Machinery Sales (hereinafter referred to as ITMS) will, within twelve (12) months from the original date of purchase, repair or replace any goods found to be defective in materials or workmanship. This warranty is void if the item has been damaged by accident, neglect, improper service or other causes not arising out of defects in materials or workmanship. This warranty does not apply to machines and/or components which have been altered, changed, or modified in any way, or subjected to overloading or use beyond recommended capacities and specifications. Worn componentry due to normal wear and tear is not a warranty claim. Goods returned defective shall be returned prepaid freight to ITMS or agreed repair agent, which shall be the buyer's sole and exclusive remedy for defective goods. ITMS accepts no additional liability pursuant to this guarantee for the costs of travelling or transportation of the product or parts to and from ITMS or the service agent or dealer, such costs are not included in this warranty.

Our goods come with guarantees which cannot be excluded under the Australian Consumer Law. You are entitled to replacement or refund for a major failure and to compensation for other reasonably foreseeable loss or damage. You are also entitled to have the goods repaired or replaced if the goods fail to be of acceptable quality and the failure does not amount to a major failure.

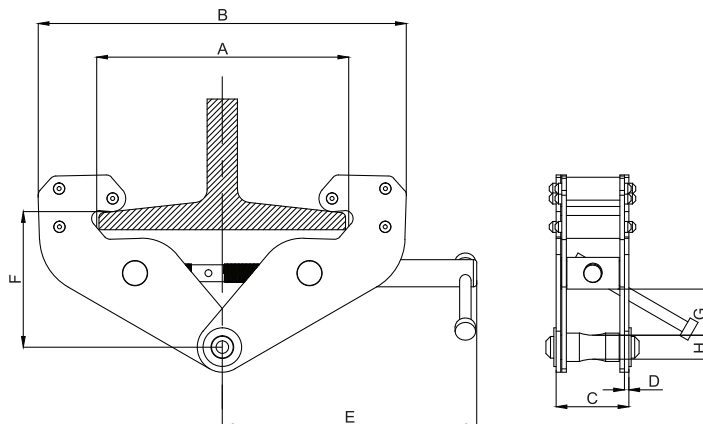
THE MANUFACTURER RESERVES THE RIGHT TO MAKE IMPROVEMENTS AND MODIFICATIONS TO DESIGN WITHOUT PRIOR NOTICE.

PRODUCTS IMPORTED AND DISTRIBUTED NATIONALLY BY:



INDUSTRIAL TOOL & MACHINERY SALES
11 EASTERN SERVICE ROAD, STAPYLTON, QLD, 4207
T: 07 3287 1114 E: sales@industrialtool.com.au
F: 07 3287 1115 W: www.itmtools.com.au

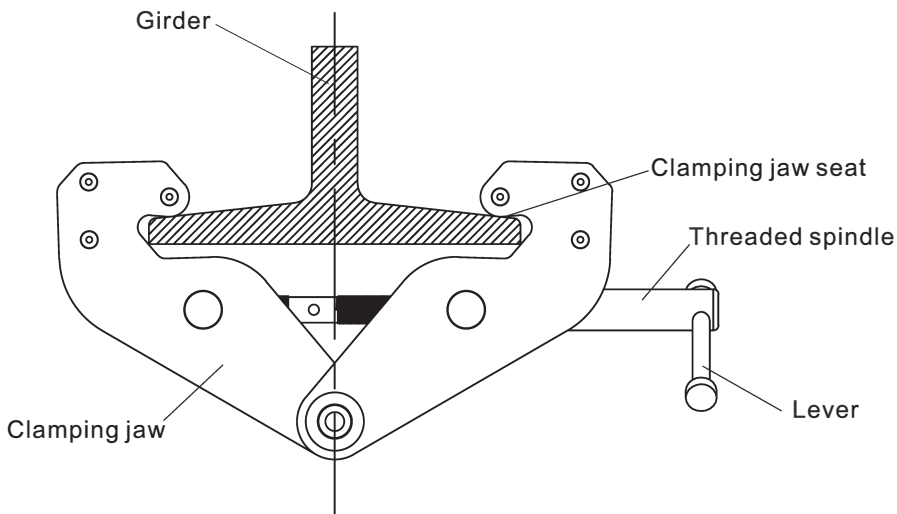
SPECIFICATIONS



| Capacity (t) | Applicable Beam Width (mm) | A (mm) | B (mm) | C (mm) | D (mm) | E (mm) | F (mm) | G (mm) | H (mm) | N.W. (kg) |
|--------------|----------------------------|--------|--------|--------|--------|--------|--------|--------|--------|-----------|
| 1 | 75-230 | 230 | 337 | 64 | 4 | 220 | 114 | 36.5 | 21 | 3.6 |
| 2 | 75-230 | 230 | 437 | 64 | 6 | 220 | 114 | 36.5 | 21 | 4.5 |
| 3 | 80-320 | 320 | 467 | 100 | 8 | 243 | 174 | 56 | 26 | 9.1 |
| 5 | 80-320 | 320 | 486 | 112 | 10 | 240 | 170 | 76 | 32 | 11.2 |
| 10 | 90-320 | 320 | 500 | 120 | 12 | 270 | 226 | 87.5 | 39 | 17.2 |

INSTALLATION INSTRUCTIONS:

1. Open the clamping jaws by rotating the lever counter-clockwise.
2. Position the clamp on the girder.
3. Close the clamping jaws by rotating the lever clockwise until hand tight.
4. Check that the clamping jaw seat has engaged the girder fully.
5. Ensure the hoist or sling being attached to the girder clamp is located directly under the centre-line of both the girder and the clamp.



WARNING:

USE ONLY on girder widths that are within the adjustable limits of the clamp.

DO NOT exceed the W.L.L. of the clamp.

DO NOT use clamps which are damaged or deformed.

Do inspect the clamp after every use.

DO NOT attempt to repair a damaged clamp - it must be repaired by an authorised repair agent.

DO NOT stand under load or installed clamp.

| W.L.L. | Beam With (mm) |
|--------|----------------|
| 1t | 75-230 |
| 2t | 75-230 |
| 3t | 80-320 |
| 5t | 90-320 |
| 10t | 90-320 |

INSPECTIONS & LOGS

Daily Inspection must be carried out each day before use, and an entry reporting on the inspection must be completed in the Inspection and Service Log at the back of this user manual. Please take a copy of the blank log before first entry so you can continue the process. Logs must be archived, and will be requested if any warranty claims or injury occurs.

THIS PRODUCT MUST ONLY BE USED BY SUITABLY TRAINED PERSONS.

Inspection & Service Log

| Date | Notes | Auth Signature |
|------|-------|----------------|
| | | |
| | | |
| | | |
| | | |
| | | |
| | | |
| | | |
| | | |
| | | |
| | | |
| | | |
| | | |