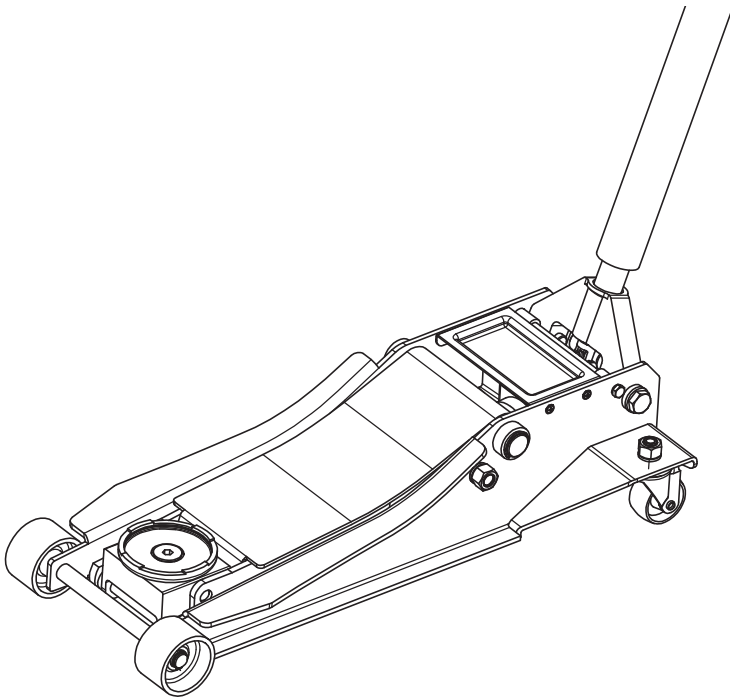




OWNER'S MANUAL 3000KG LOW PROFILE TROLLEY JACK

**WORKING LOAD LIMIT: 3000KG
HEIGHT LOWERED: 85mm
HEIGHT RAISED: 535mm**



PART NO: TM827-03000

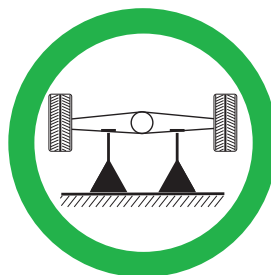
WWW.ITMTOOLS.COM.AU

Staple your receipt here
for future reference.

Safety Warnings



**DEATH OR INJURY
FROM INCORRECT USE**



**USE TWO
SUPPORT STANDS**



**FLAT, HARD,
LEVEL GROUND**



**FREE TO ROLL DURING
LIFTING & LOWERING**

Safety Information

- Consult the vehicle manufacturer's manual prior to the lifting of the vehicle.
- Conduct a pre-operational check of the equipment.
- Use the hydraulic trolley jack for lifting and lowering only; the raised vehicle should be supported on suitably rated vehicle support stands.
- Use the hydraulic trolley jack on a hard level surface and ensure it is free to roll during lifting and lowering.
- No person should remain in a vehicle that is being lifted.
- Chock the unlifted wheels of the vehicle.
- Centrally locate the load on the head cap.
- Support the vehicle on suitably rated vehicle support stands and remove the hydraulic trolley jack prior to commencement of work.
- No person should get bodily under a vehicle that is supported only by a hydraulic trolley jack.

To ensure that this trolley jack provides you with the years of service for which it is designed, carefully read and follow the instructions in this manual.

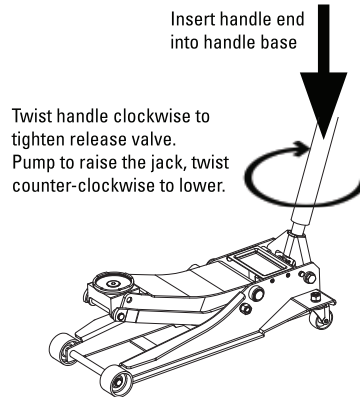
Be sure to keep this manual for future reference.

Specifications

Working Load Limit	3,000kg
Height Lowered	85mm
Height Raised	535mm

Assembly Instructions

- Place trolley jack carton in an open space and remove lid.
- Remove handle pieces from foam inserts then remove foam inserts to access trolley jack.
- Remove trolley jack from carton. Assistance may be required with this step depending on the size and weight of the jack.
- Remove the handle base retaining clip by pushing down the handle base towards the ground to relieve pressure off the retaining clip.
Note: Keep this clip in a safe location as it will be required when adding hydraulic fluid.
- Connect bottom and top handle pieces together ensuring the retaining spring pin locates into the hole correctly.
- Loosen retaining bolt on the handle base to allow the assembled handle to be placed into the handle base socket. Rotate handle while in handle base until handle locates onto the trolley jack release valve drive.
- Tighten retaining bolt to lock handle in place.
- Confirm handle is fitted correctly by twisting handle clockwise to tighten release valve then pump the trolley jack up without load then lower by rotating handle counter-clockwise.
- The speed at which the head cap lowers is proportional to the amount the handle is rotated counter - clockwise. Less rotation = slower rate; More rotation = faster rate.



Operation

To Raise Trolley Jack and install Jack Stands

- Turn the operating handle clockwise until the release valve closes. Do not over tighten the valve.
- Place the hydraulic trolley jack directly under the vehicle lifting point so that the saddle is centrally located with lifting point. Refer to the vehicle owner's manual for correct lifting points.
- Operate handle until saddle takes a slight amount of load then check positioning to ensure head cap is centrally loaded and will not slip from the lifting point.
- Raise the vehicle to required height. When lift is completed, carefully place jack stands under vehicle in the correct locations. (Refer to vehicle owner's manual).
- Gently turn jack handle counter-clockwise slowly. Check the stands are correctly located under the vehicle as per owner's manual.
- Remove hydraulic trolley jack from under the vehicle and put in a safe location while work on the vehicle is being completed.

To Remove Jack Stands and Lower Trolley Jack

- Reposition the hydraulic trolley jack at the same lifting point as was used to lift the vehicle.
- Rotate handle clockwise to tighten release valve.
- Operate handle until saddle takes a slight amount of load then check positioning to ensure head cap is centrally loaded and will not slip from the lifting point.
- Carefully raise the hydraulic trolley jack until jack stands are free to be removed.
- Ensure there are not items obstructing a safe lowering of the vehicle.
- Once vehicle has been lowered and the hydraulic trolley jack is back to the lowest position remove jack and store in a safe location.

Inspection

The product shall be maintained in accordance with the product instructions. No alterations shall be made to this product.

Prior to use of the Trolley Jack

A visual inspection should be carried out to ensure jack is in good working order. Ensure there are no oil leaks, loose parts, weld cracks and that all necessary operation components are in good condition and not worn.

After use

Check again for oil leaks, loose parts, weld cracks and that all components are in good condition and not worn. Should the trolley jack be subject to extreme shock loads, it is recommended the product be sent to a recommended repair agent via the manufacturer's representative. Always store the trolley jack in it's fully lowered position.

Annual inspection

An annual inspection is highly recommended and should be carried out by the manufacturer or supplier's agent.

Maintenance

All moving parts on the trolley jack should be lubricated every month with a general purpose grease to maintain durability and safe operation of the trolley jack.

- Apply the general purpose grease to all moving parts such as wheels, rollers, lifting arm pivot points, handle base, universal joint etc. ensure the main lifting arm pivot point is well lubricated so it does not cause excessive wear or noise when lifting loads.

Check Oil Level

Rotate release valve counterclockwise to allow ram to fully retract. Using handle base clip, lock down the handle base so that access to oil plug may be gained.

Remove the oil fill plug. Add ISO 68 hydraulic jack oil until the level is 10mm below the filler hole opening.

Replace fill plug and remove handle base retaining clip (do not dispose). Check jack operation. Purge air from system as required.

Adding Oil

When adding or replacing oil, only use ISO 68 hydraulic jack oil. Do not add any other type of oil or mix other oil with the ISO 68 hydraulic jack oil.

NEVER use motor oil, brake fluid, alcohol, dirty oil or any other type of liquid other than the ISO 68 hydraulic jack oil. Incorrect oil or fluid will cause damage to the trolley jack hydraulic system.

Modifications

Modifications must not be carried out or accessories added.

This hydraulic trolley jack is designed for use with a 110mm diameter head cap, and a handle length of 1250mm.

Air Purge

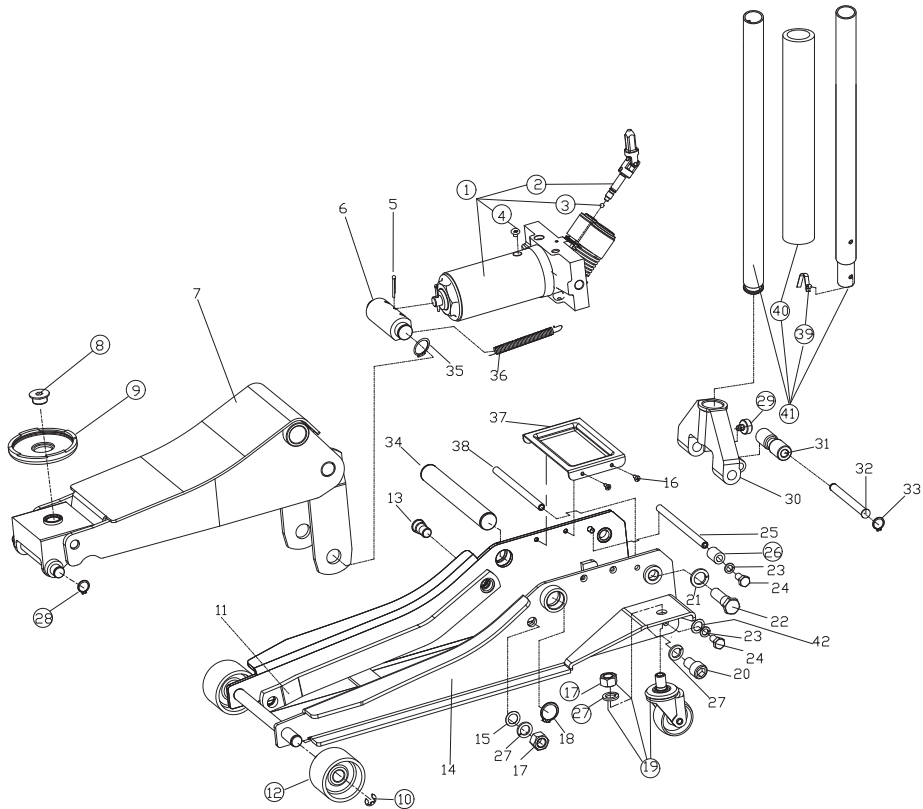
1. Place trolley jack on a hard level surface.
2. Turn handle/ release valve counter-clockwise to lower trolley jack completely.
3. Operate handle 10 - 15 times to purge any air out of the system.
4. Turn handle / release valve clockwise until tight.
5. Operate handle until trolley jack completes full lift cycle.

Now your Trolley Jack is ready to use.

Troubleshooting

Problem	Possible Cause	Action
Jack will not lift to full height.	Low oil level.	Check oil level, top up if low.
Jack will not hold load.	Release valve not closed properly. Hydraulic jack oil contaminated. Pump valves not sealing. Cylinder ram binding.	Take jack to the closest repair agent.
Lift arm will not lower.	Cylinder ram binding Part worn. Internal damage Broken return spring or unhooked. Lift arm linkage bent or binding.	Take jack to the closest repair agent.
Jack feels spongy with lifting.	Air in hydraulic system.	Purge air from system.
Jack leaking oil.	Damaged seal. Missing oil filler plug. Release valve taken out.	Take jack to the closest repair agent.
Wheels noisy when moved.	No lubrication on wheel bearings.	Lubricate wheel bearings.
Jack noisy when lifting.	No lubrication on moving parts.	Lubricate all moving parts.

Parts



Parts

Ref	Part Description	Qty
1	Power unit assembly	1
2	Universal joint assembly	1
3	Steel ball bearing Ø6mm	1
4	Oil plug	1
5	Cotter pin Ø4X45mm	1
6	Coupling connector	1
7	Lifting arm assembly	1
8	Pin for saddle	1
9	Saddle	1
10	C-clip Ø15mm	4
11	Connected bar	2
12	Front wheel	2
13	Connecting bar pintle	2
14	Frame assembly	1
15	Washer M16	2
16	Hex drive flat head screw M4.8X16mm	4
17	Nut M16	2
18	C-clip Ø28mm	4
19	Rear caster assembly M16	2
20	Socket head cap screw M16X25mm	2
21	Washer M18	2
22	Shoulder bolt M18X54mm	2
23	Spring Washer M10	4
24	Hex head screw M10X16mm	4
25	Position shaft for handle socket	1
26	Plastic sleeve	2
27	Spring Washer M16	6
28	C-clip Ø28mm	2
29	Handle socket screw M10X19mm	1
30	Handle socket	1
31	Contact roller	1
32	Pin for roller	1
33	C-clip Ø12mm	1
34	Supporting shaft	1
35	C-clip Ø25mm	2
36	Return spring	2
37	Cover plate	1
38	Back shaft	1
39	Handle lock pin	1
40	Flexible protective pipe	1
41	Handle assembly	1
42	Washer M10	2

This jack complies with Australian Standard
AS 2615:2016 Hydraulic trolley jacks

CAUTION

This jack is designed for lifting purposes only. Please read the enclosed instructions for safe and correct operating procedures

