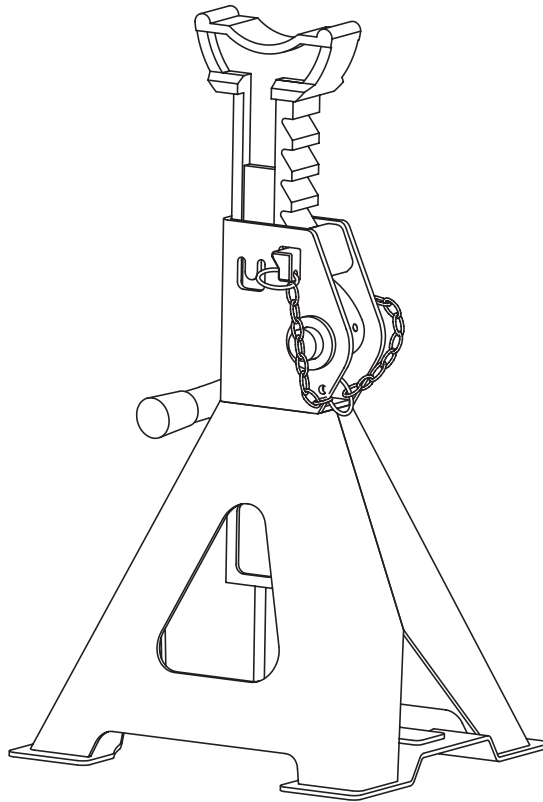




OWNER'S MANUAL RATCHETING JACK STAND 3000KG



PART NO: TM820-03000

Complies with Australian Standard
AS 2538:2016 Vehicle support stands

CAUTION

*Use vehicle support stands on a hard level surface, preferably concrete Use vehicle support stands in pairs
Check that no part of the underbody of the vehicle will foul as the stands are positioned
Check the unlifted wheels of the vehicle Ensure that the locking mechanism is fully engaged
Do not extend the height of the stand beyond its maximum working height*

TECHNICAL SPECIFICATIONS

This jack stand complies with Consumer Goods (Vehicle Support Stands) Safety Standard AS 2538:2016

Working Load Limit	3000kg
Height Raised	515mm
Height Lowered	350mm

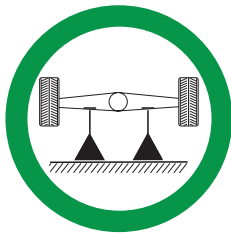
SAFETY WARNING



Death or injury
from incorrect use



Flat, hard,
level ground



Use two
support stands



Free to roll during
lifting & lowering

SAFE USAGE INSTRUCTIONS

1. Study, understand, and follow all instructions before operating this device.
2. Do not exceed rated capacity.
3. Use only on hard, level surfaces, with less than 3 degrees of slope.
4. Center load on saddle.
5. Use as a matched pair only.
6. Stands are not to be used to simultaneously support both ends of a vehicle.
7. No alterations shall be made to this product.
8. Support only on areas of the vehicle as specified by the vehicle manufacturer.
9. Only attachments and/or adapters supplied by the manufacturer shall be used.
10. Use wheel chocks or other blocking device on opposing wheels before using jack stands.
11. Do not use jack stands for any use other than the manufacturer specified usage.
12. Do not use if damaged in any way.
13. NEVER use jack stands on a lawn mower or lawn tractor.
14. Do not move or dolly the vehicle while on support stands.
15. Do not rock the vehicle while working on or around equipment.
16. The following are not recommended for supporting on this equipment: Foundations, Homes, Mobile Homes, Trailers, RV's, Campers, nor Fifth Wheels, etc...
17. Failure to heed these markings may result in personal injury and/or property damage.

DIRECTIONS FOR USE

If the operator is not fluent in English, the product and safety instructions shall be read to and discussed with the operator in the operator's native language by the purchaser/owner or his designee, making sure that the operator comprehends their contents.

Visual inspection shall be performed before each use of the stand by checking abnormal condition, such as cracked welds, leaks and damaged, loose, or missing parts if stand is believed to have been subjected to abnormal load or shock inspection shall be made by authorized repair facility.

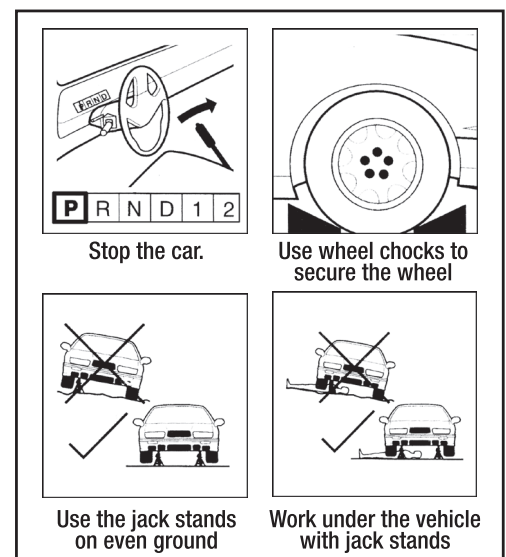
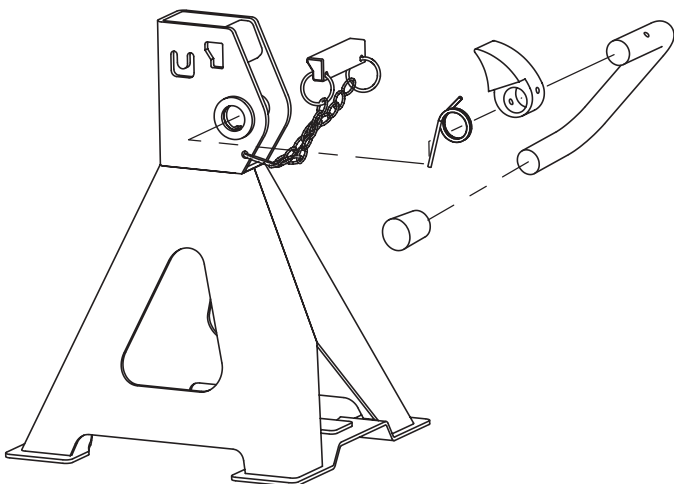
1. After the vehicle been lifted up to the height, where is enough to have the tire leave from the ground, then place the jack stand under the position where to support the vehicle.
2. Unlock the torsion spring and pull out the safety pin, then lift up the handle to make the ratchet bar raise up automatically to touch the position where to support the vehicle.
3. Slowly lower the vehicle down to the jack stand, make sure the ratchet bar been fully engaged with jack stand base.
4. Insert the safety pin and lock it with torsion spring.
5. After completion of the vehicle repair or maintenance, lift up the vehicle to the height, where is enough to remove the jack stands.
6. Remove the jack stands, and slowly lower the vehicle down to the ground.
7. Unlock the torsion spring and pull out the safety pin, lift up the handle and then press the ratchet bar to the mini height.
8. Insert the safety pin and lock it with torsion spring.
9. Store the jack stands for future use.

INSPECTION

Visual inspection shall be performed before each use of the stand by checking abnormal condition, such as cracked welds, leaks and damaged, loose, or, missing parts if stand is believed to have been subjected to abnormal load or shock inspection shall be made by authorised repair facility.

Equipment that appears damage or worn or operates abnormally shall be removed from service until repair. Repair should be made by authorised repair facility. Annual inspection of the stand is recommended and should be made by the manufacturer's or supplier's authorised repair facility to ensure that you stand is optimum conditions and that the stand has correct decals and safety labels specified by the manufacturer.

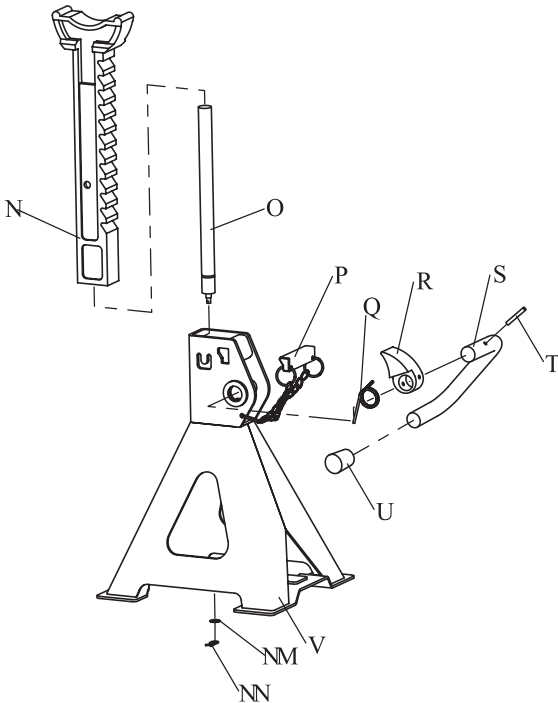
Some models may have a screw rather than a metal tab.



WARNING

- Confirm that the load to be applied does not exceed the working load limit of the vehicle support stands.
- Conduct a pre-operational check of the equipment.
 - Use vehicle support stands on a hard level surface, such as concrete.
 - Use vehicle support stands in pairs.
 - Check that no part of the underbody of the vehicle will foul as the stands are positioned.
 - Ensure that each stand is securely located under a strong point of the vehicle. Consult the vehicle manufacturer's manual for guidance.
 - Ensure that the locking mechanism is fully engaged.
 - Chock the unlifted wheels of the vehicle.
 - Do not extend the height of the stand beyond its maximum working height, nor use any item such as bricks or timber to support the vehicle.
- Modifications must not be carried out or accessories added.

PART LIST AND DIAGRAM



REF.	Description	QTY
1	Ratchet bar	1
2	Pneumatic spring	1
3	Safety pin assembly	1
4	Spring	1
5	Locking pawl	1
6	Locking handle	1
7	Spring pin	1
8	Handle sleeve	1
9	Base frame	1
10	Washer	1
11	R pin	1