

Biodegradable Hand & Surface Bucket Wet Wipe Solution

Offshoot is the leader in NZ for the supply of Commercial Wet Wipes, providing a solution for any type of facility, focusing on three major areas - Gyms, Offices and Supermarkets

As the market continues to drive towards sustainable options, Offshoot provides a full range of **Biodegradable & Antibacterial Wet Wipes**

Our wipes are suitable for any type of Fitness Centre, Office, Public Events, Retail, Supermarket, Hospitality and Transportation Service

Especially effective formula on touch points and surfaces including **Hands, Cardio Machines, Benches, Electronic Devices, Workstations, Trolley Handles, Screens** and any other hard, non-porous surface

As our wipes are Alcohol Free, they **will also not damage your equipment, fabrics or electronics or hands**



Height: 202mm

Width/Diameter: 209mm



Challenges with Paper Towels, Cloths, Spray Bottles, Chemicals & Other Wipes

- ▶ Customers spraying cleaner directly onto electrical equipment - *Cardio Machines*
- ▶ **Cloths are expensive**, generally thrown away and not good for the environment
- ▶ **Other Wet Wipe Buckets do not hold enough wipes** - *300 wipes maximum*
- ▶ Constantly running out and having to change paper towels in the dispensers
- ▶ **Lint, dust and paper pieces** from towel dispensers collecting on the floor
- ▶ Automatic and Hands Free Systems breaking down or batteries going flat
- ▶ **Incorrect dilution ratios** for cleaning chemicals
- ▶ **Other Wipes are not fully biodegradable**
- ▶ **Spray bottles not correctly labelled**



100-200 Wipes



300 Paper Towels



700 Wipes

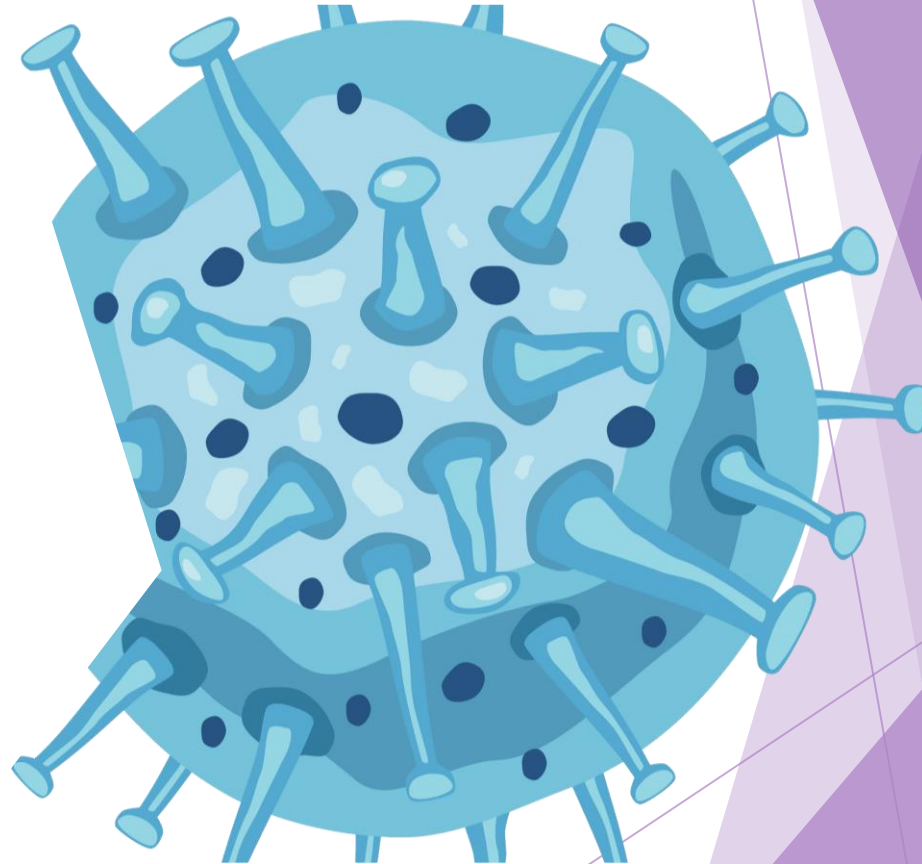
Advantages of Our Wipes

- ▶ **Super easy to use** - Encourages customers/staff to keep your surfaces clean, which improves morale & satisfaction
- ▶ **Effective sanitising ensures clean surfaces** - Kills 99.99% of Germs, Bacteria & Viruses
- ▶ **Long lasting** - Large rolls of 700 Wipes mean more cleans per refill, less changing of paper and less mixing of spray bottles
- ▶ **Dries fast protecting surfaces from damage** (Rust, moisture in the screens or on surfaces)
- ▶ **Labelled Buckets** - Our buckets are compliant with NZ labelling standards
- ▶ **Recyclable/Reusable Buckets** - Our bucket system is designed to be re-used over and over and is also fully recyclable
- ▶ **100% Biodegradable and Landfill Friendly Wipes** - 100% biodegradation in landfill with 90 days



How **EFFECTIVE** are our Wipes & **WHAT** are they tested against?

- ▶ Our wipes have been **Clinically Tested*** to **Kill 99.99% of the Virus COVID-19** within 10 minutes of Surface Contact Time
 - ▶ Murine Hepatitis Virus (MHV)-1 ATCC/VR-261 - Virus
- ▶ Our wipes have been **Clinically Tested*** to **Kill 99.9999% of Germs & Gram (+) and (-) Bacteria** within 5 minutes of Surface Contact Time
 - ▶ MRSA - Gram (+) Bacteria
 - ▶ Klebsiella Pneumonia - Gram (-) Bacteria
 - ▶ Candida Albicans - Yeast
 - ▶ Staphylococcus Auereus (Staph) - Gram (+) Bacteria
 - ▶ Escherichia coli (E. coli) - Gram (-) Bacteria
 - ▶ Pseudomonas Aeruginosa - Gram (-) Bacteria
 - ▶ Listeria Monocytogenes (Listeria) - Bacteria
 - ▶ Salmonella typhimurium (Salmonella) - Gram (-) Bacteria
 - ▶ Aspergillus - Fungi/Mold



Certifications & Approvals

We take our wipes very seriously and are dedicated to providing the most effective and biodegradable wipes on the market. Our wipes are rigorously tested and have the following accreditations & approvals:

- ▶ **MPI C44 Approved** - Hand Sanitiser Towelette
- ▶ **MPI C32 Approved** - Surface Sanitiser
- ▶ **AsureQuality Assessed**
- ▶ **TMD110 & EN1276 Approved** - Time Kill Test for Bacteria
- ▶ **TMCV 006 & ASTM E1053 Approved** - Testing of virucidal activity of disinfectants by surface carrier technique
- ▶ **ASTM D5511 Approved** - Biodegradable in Landfill Conditions - 100% biodegradation within 90 days
- ▶ **Soft Plastics Recycling Scheme** - Plastics packets can be recycled in drop-offs locations



Biodegradable

Ministry for Primary Industries
Manatū Ahu Matua



AsureQuality

Bucket Wet Wipe System

- ▶ **Portable - No installation** and can be positioned exactly where you need them
- ▶ **Holds 1 Roll of 700 Biodegradable Wipes**
- ▶ **Recyclable** and **Re-usable** Bucket and Lid
- ▶ Encourages users to **pull 1 Wipe at a time**
- ▶ Lid to **keep wipes moist** to the last wipe
- ▶ **Lightweight**, solid, compact and robust
- ▶ Easy to load and empty



