

Application

For interior and exterior applications.

This quality bottom roller hardware is ideally suited to high class joinery installations.

Designed for heavy straight sliding partitions, fully glazed patio or showroom doors. Also suitable for flush or panelled doors.

The bottom roller design is suited to applications where the supporting structure or lintel is insufficient for the weight of the door or where headroom is limited.

To cover width of opening, any number of doors can be used on single or multiple lines of rail.

To accommodate different building designs, doors can slide to one or both sides.

Where doors are fitted externally, a canopy is recommended to protect the top guide channel, brackets and top guide rollers.

Door Specification

Rail System:

For Individual Doors:
Max Door Height
Max Door Weight
Min Door Thickness

Timberoll 300

3300mm
300kg
44mm

Doors must be constructed with bottom rails of at least 175mm depth to accommodate the concealed, mortised, bottom rollers.
Door weight is carried on the floor permitting the use of a light overhead structure.

Hardware Specification

Top Guide Channel:

Heavy Duty
Material
Finish
Standard Lengths

900A Aluminium with safety lip
Aluminium
Clear Anodised
2000mm, 3000mm, 4000mm and 6000mm.

Top Guide Brackets:

For single line - face fitted
For double line - face fitted

1SS/250 Stainless Steel
5SS/250 Stainless Steel

Constructed from cast 316 Stainless Steel fit at 900mm maximum centres.

Top Guide Rollers (2 per door):

Top Plate fitting
Cast 316 Marine grade stainless plate with double nylon rollers with one adjustable laterally to prevent rattle.

61SS/900 (for 900 Top Guide Channel)

Bottom Rollers (2 per door):

The 916SS roller is constructed of stainless steel with a precision bearing for ease of use and smooth, maintenance-free rolling.

916SS

Bottom Rail:

Material
Standard Lengths
Bottom Rail is drilled and countersunk for screwing to timber floor.

917
Brass
2000mm, 3000mm and 4000mm.

Interlocker:

Material
Finish

924
Aluminium
Clear Anodised (CA), Black Anodised (BLK) and Anodised Bronze (BZ)

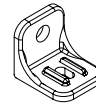
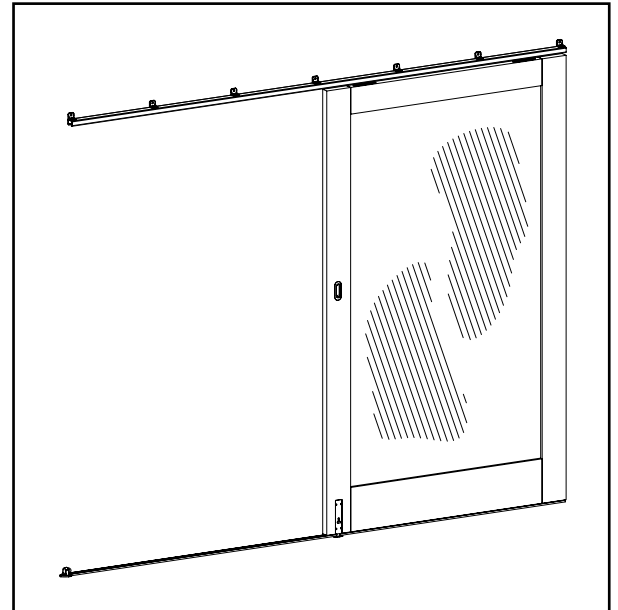
Standard Lengths
Interlocker is drilled and countersunk, comes with brush seal.

4800mm (to suit typical 2400mm high door)

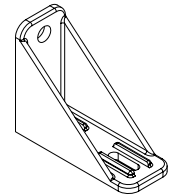
Accessories:

Locking
Flush Bolt
Flush Pull
Door Stop
Frame Seal

6400 Sliding Mortice Lock
456
401
110
AQ21



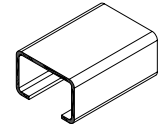
No. 1SS/250 Bracket



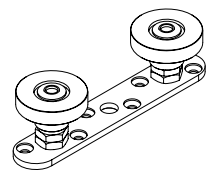
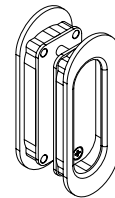
No. 5SS/250 Bracket



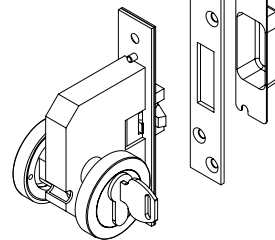
No. 924 Interlock Seal



No. 900A Top Guide Channel



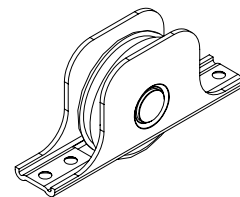
No. 61SS/900 Top Guide



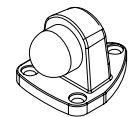
No. No.6400 Sliding Door Mortice Lock with Flush Pull



No. 917 Bottom Rail



No. 916SS Bottom Roller



No. 110 Door Stop

