

**Application**

Widely used in lighter commercial and industrial applications.  
 To cover any width of opening, any number of doors can be used.  
 To accommodate different building designs, doors can slide to one or both sides.  
 Hinged door for easy access may be incorporated into a sliding door.  
 Where doors are fitted externally, a canopy is recommended.

**Door Specification**

**Track System:** Single Run 180  
 For Individual Doors:  
 Max Door Height 3500mm  
 Max Door Weight Nylon Tyre Hanger 180kg  
 Door Thickness 35-48mm  
 For ease of operation it is recommended that the door width should not exceed 75% of the height of door height.  
 Timber doors for interior use can be of flush construction or glazed.  
 Timber doors for industrial applications should be framed, ledged and braced.  
 Metal doors should be constructed of box section, channel or angle framing, well braced and clad with flat or corrugated sheets.

**Hardware Specification**

**Track:** 180  
 Material Aluminium  
 Standard Lengths 2000mm, 3000mm, 4000mm and 6000mm  
 Aluminium track available in mill or clear anodised

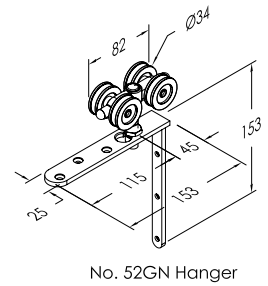
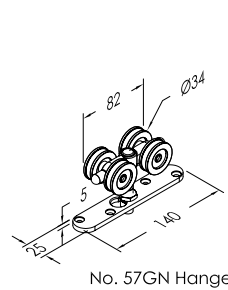
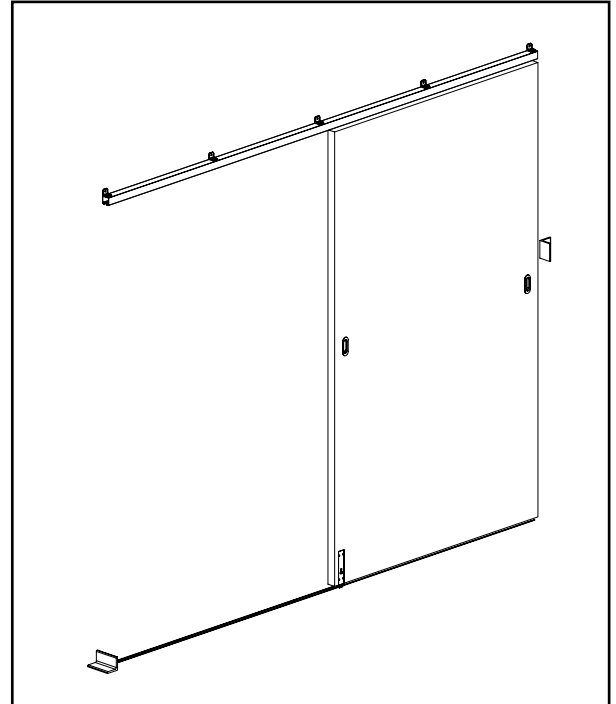
**Brackets:**  
 Face fitted stainless steel angle 1SS/250  
 Double face fitted bracket SS 5SS/120  
 Fit at 900mm maximum centres

**Hangers (2 per door):**  
**Hangers:** Full Stainless  
 Timber Doors - angle fitting 52GN 52SS/GN  
 Timber Doors - plate fitting 57GN 57SS/GN  
 Metal Doors - angle frame 56GN 56SS/GN  
 Metal Doors - box frame 56GLN 56SS/GLN  
 Metal Doors - plate fitting 57GN 57SS/GN  
 All hangers suffixed 'N' have nylon tyre wheels and are fitted with ball race bearings.  
 Nylon tyre wheel hangers should not be used on installations involving temperatures exceeding 80°C.

**Guides:**  
 Timber Doors - SS plate fitting 106RB/94  
 Multiple Doors 102W/94SS

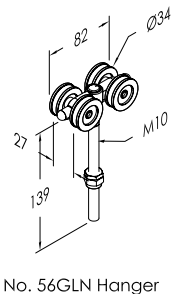
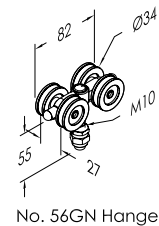
**Channels:**  
 Aluminium 94A Aluminium  
 94PPA Aluminium Support & Polypropylene  
 Finish Aluminium - Mill or Clear Anodised  
 Standard lengths 2000mm, 3000mm, 4000mm and 6000mm  
 Brass 94B Brass  
 Standard Lengths 2000mm, 3000mm, 4000mm and 6000mm

**Accessories:**  
 Flush pulls 401  
 Door stop 180DS  
 Locks 6400 Series Sliding mortice locks  
 Flush Bolts 456  
 Flush bolts and flush pulls are available in (PVDB) PVD Brass, (SN) Satin Nickel & (PN) Polished Nickel



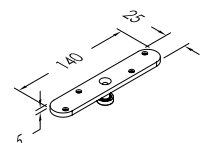
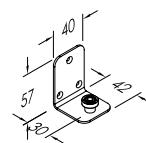
No. 57GN Hanger

No. 52GN Hanger



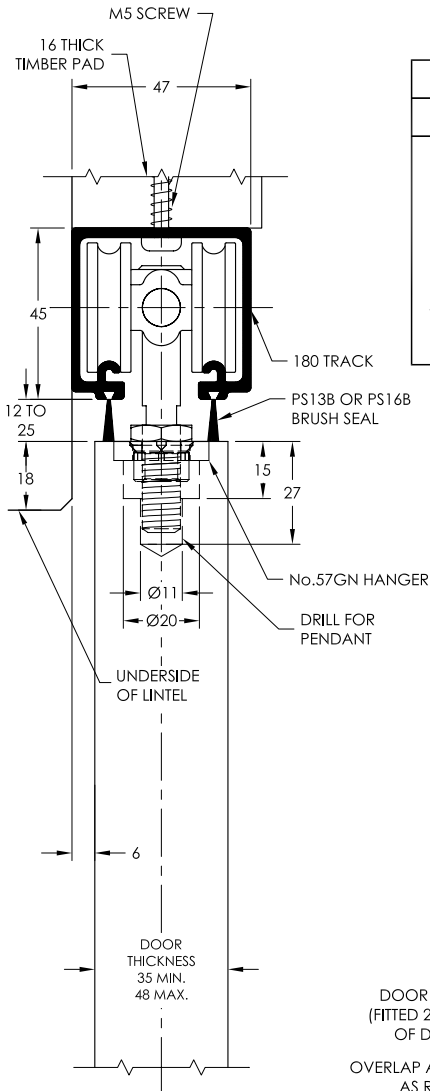
No. 56GN Hanger

No. 56GLN Hanger



No. 102W/94SS Guide

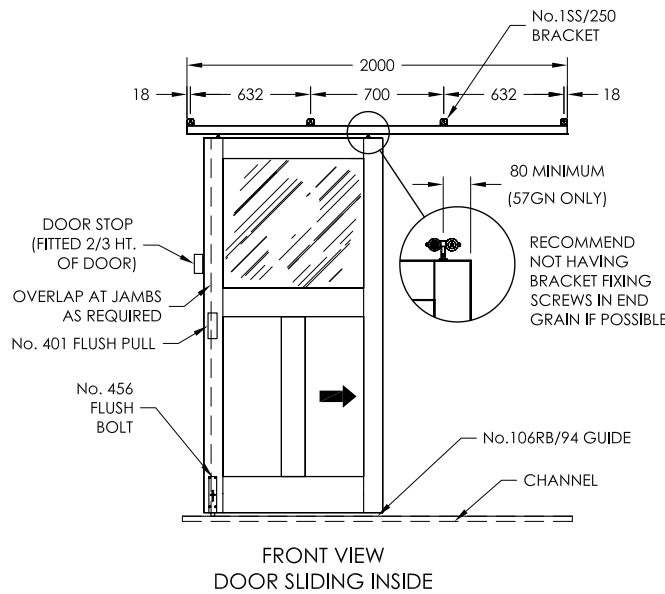
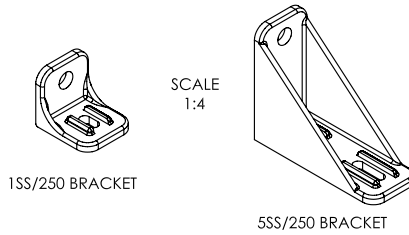
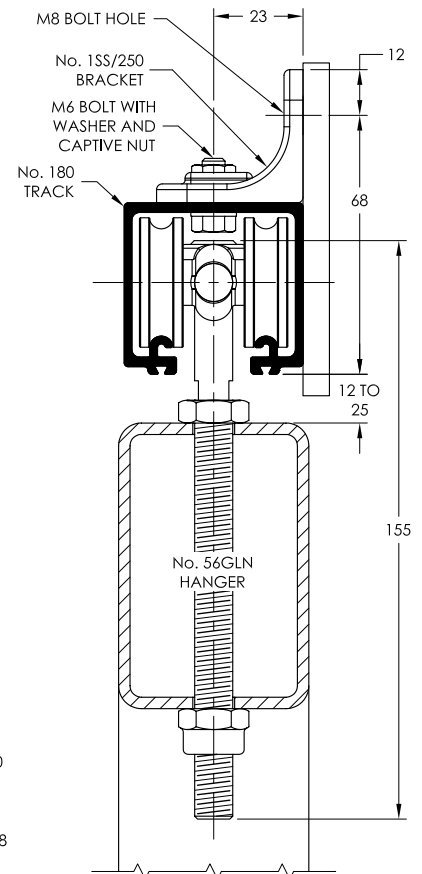
No. 106RB/94 Guide



STANDARD TRACK LENGTH	2000	3000	4000	6000
NORMAL BRACKET CENTRES	650 - 700	750	800	750

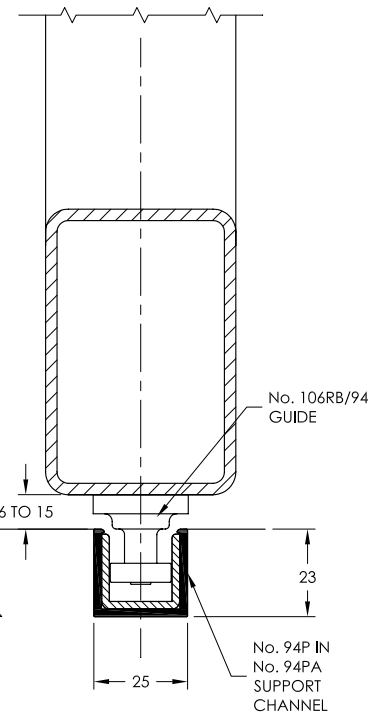
FOR HEAVY DOORS, OR THOSE SUBJECTED TO ABNORMAL USE, BRACKET CENTRES SHOULD BE REDUCED TO 500

CENTRE 'E' IS BALANCE OF TRACK LENGTH LESS 18 WITH 1SS/250 BRACKETS



HANGERS AND GUIDES AVAILABLE WITH SHORT STEM FOR ANGLE OR CHANNEL FRAMED DOOR

SECTION SCALE 1:2



SECTION SCALE 1:2

GUIDE SYSTEMS WITH CHANNEL

SECTION SCALE 1:2

