

Applications

Brio's new Open Round Rail Timber is an ideal internal system for residential and commercial applications of timber panels with exposed hangers and rail.

Open Round Rail Timber 100 hangers are 304 stainless steel with precision bearings.

Panel Specification

Track System:

For Individual Panels:

Max Panel Height	3000mm
Max Panel Width	2000mm
Max Panel Weight	100kg
Panel Thickness	35-44mm

Open Round Rail Timber 100

Standard Packs

Packs includes 2 hangers, doorstops, guide, handle, brackets and fixings

Pack No.

ORT100

Max Panel Width

2000mm

Hardware Specification

Track:

100OR

Material

Stainless Steel

Standard lengths

2000mm, 2500mm, 3000mm and 4000mm

Guides:

Stainless precision bearing 106E/94

Nylon spring loaded guide 108N/814

Channels:

Polypropylene

94P Black

Aluminium

94PPA Aluminium Support & Polypropylene 814 Aluminium Rail

Finish

Aluminium - Mill or Clear Anodised

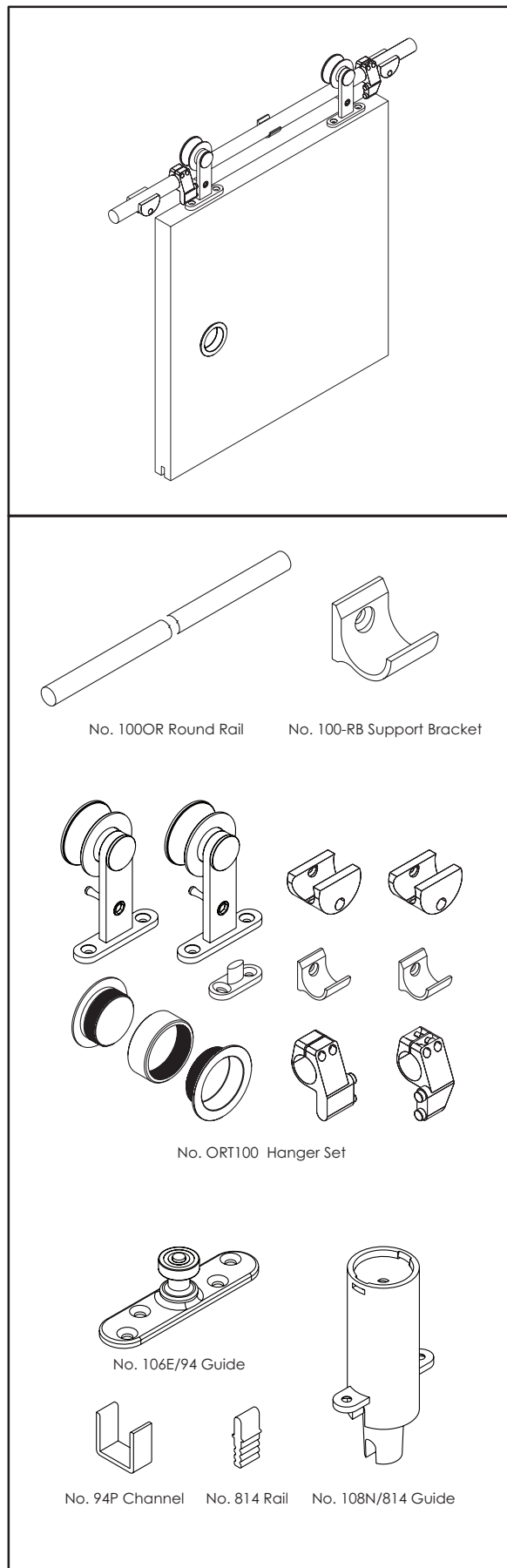
Standard lengths

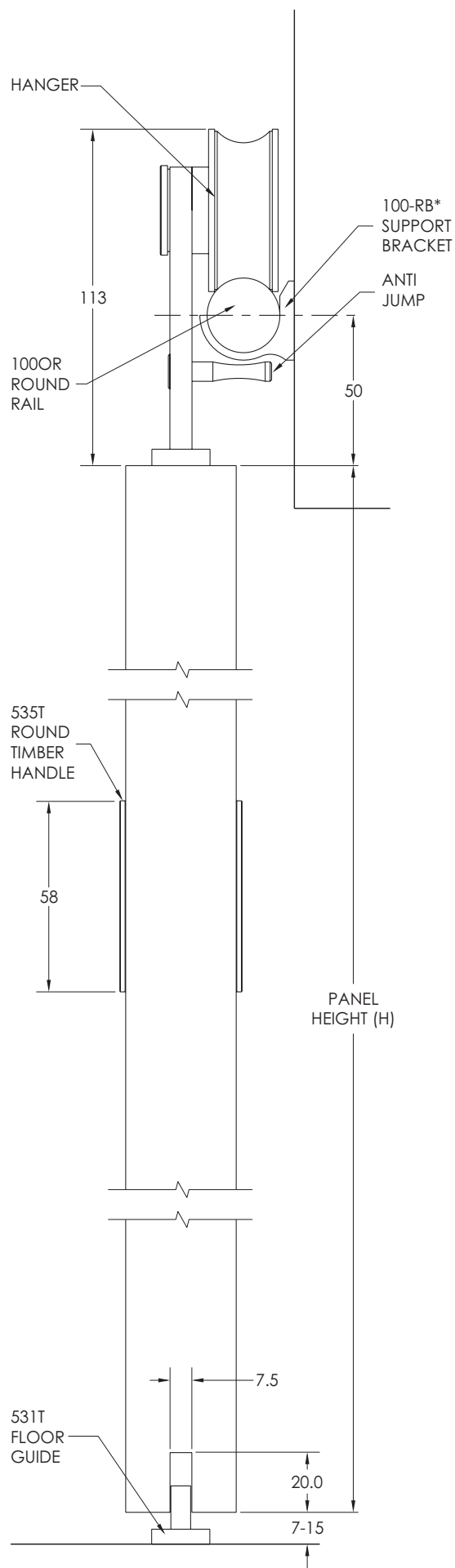
2000mm, 3000mm, 4000mm and 6000mm

Support Bracket:

Support bracket

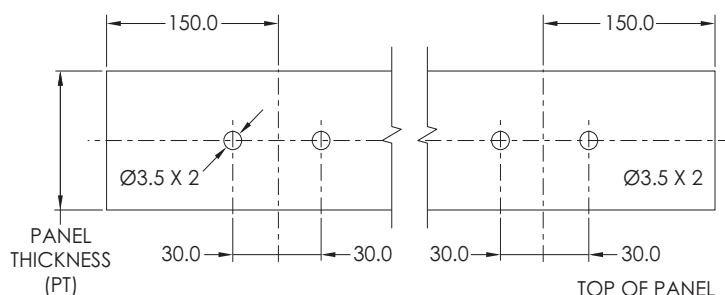
100-RB



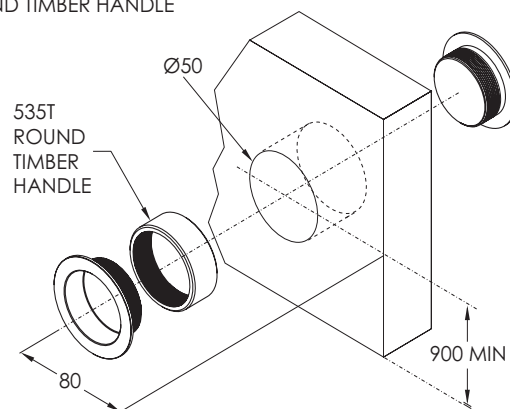


PANEL PREPARATION

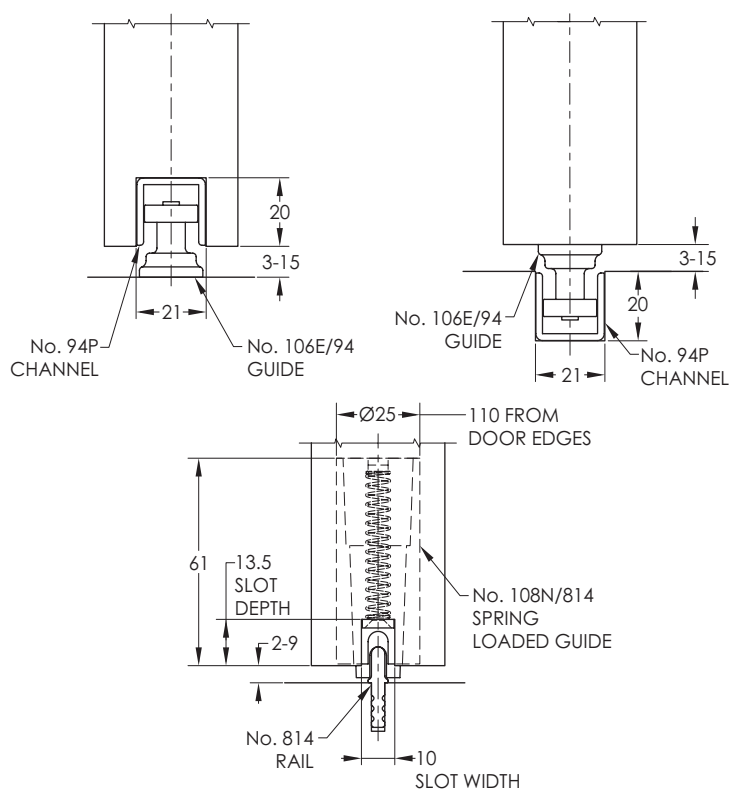
HANGERS



ROUND TIMBER HANDLE



OPTIONAL GUIDES



RAIL LENGTH	*ADDITIONAL 100-RB REQUIRED
2500mm	1
3000mm	2
4000mm	4