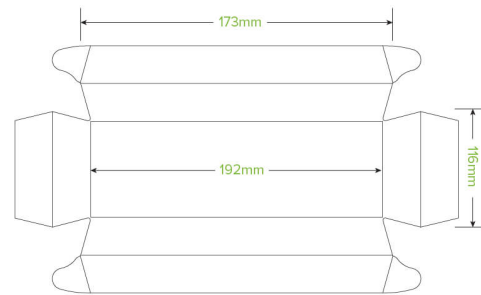


Long BioBoard Sushi Tray BB-ST-LONG



Made from FSC™ Premium paper with a unique aqueous coating, with home compostable certification (AS5810) underway, this long sushi tray is perfect for larger servings. Compliment with a clear PLA or PET lid to keep sushi fresh for deliveries. Ideal packaging that offers a stylish and sturdy base for your creations.

Carton quantity: 300	Sleeves per carton: 6	Units per sleeve: 50
Carton Size LxWxH (cm): 42x26x22.5	Carton gross weight (kg): 4.600000	Raw material: Paper - FSC™ Mix certified paper
Lining/coating: Bioplastic - PLA	Window material: None	Printing Type: Offset
Inks: Food Contact Safe Inks	Brim fill capacity (ml): 345	Dimensions top LxW (mm): 207x75
Dimensions base LxW (mm): 192x63	Product Depth: 25	Product weight (g): 13.61
Thickness: 255	Use: Dry Contents Only, Hot or Cold	Manufactured: China
Customise: Print	MOQ custom: 100000	Mould fees: No
Environmental production certified: ISO 14001	Facility Quality Systems: ISO 9001	Factory food safety certified: BRC
Corporate social accreditation: SMETA	Home compostable: Pending Certification to AS5810 Australian Standards	Industrially compostable: No
Recyclable: No		