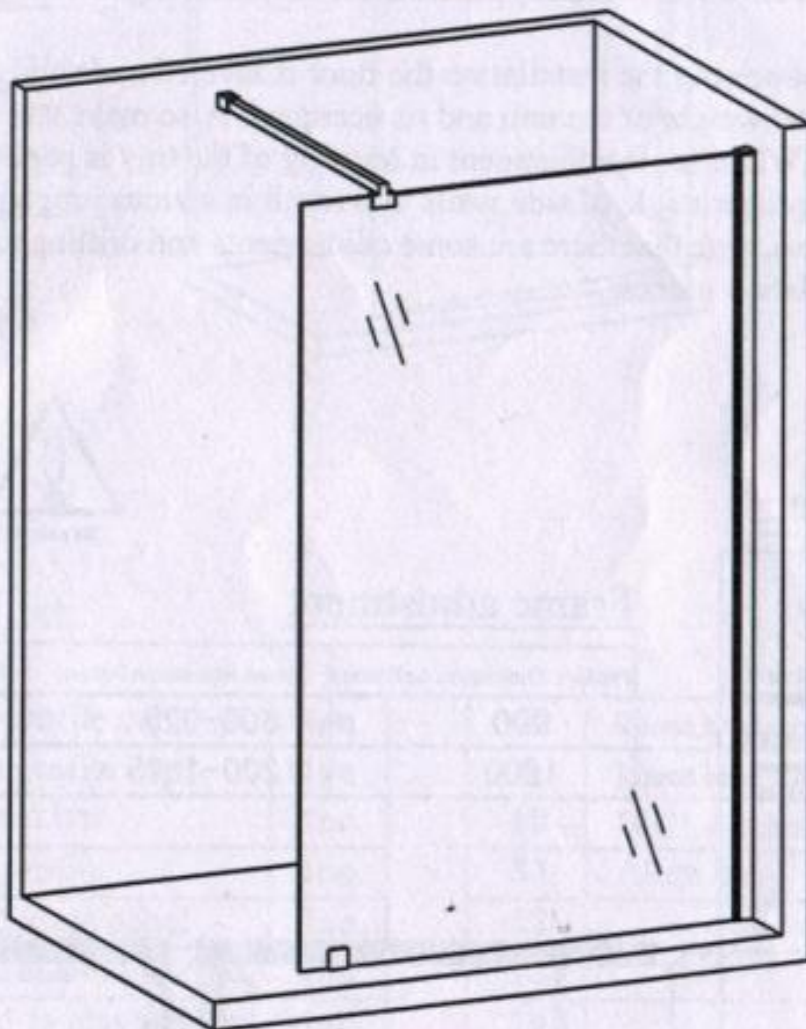


WAIK- IN SHOWER ENCLOSURE INSTALLATION INSTRUCTIONS

Model: W1N10



Our product may have changes without prior notice.

PREPARATION

1. After opening the boxes, read this instruction carefully, check all the packed parts are complete by cross checking all the components against the "Detailed Diagram of Shower Enclosure Components". Examine for shipping damage. If the unit has been damaged, has a finishing defect or has missing parts please contact your local distributor within 3 business days. Contact your distributor if you have any questions.
2. Please note that you should consult your local building codes on questions on installation compliance standards (if required).
3. Install all the required plumbing and drainage before securing the shower. Use a competent and licensed (if required) plumber for all plumbing installation.
4. Please insure that prior to the installation the floor is leveled and solid and will be able to support the total weight of the unit and its occupant. Also make sure the walls are at the right angles. While some adjustment in leveling of the tray is possible, irregular floor level or improper angle of side walls will result in serious problems for your installation. Please, note that there are some adjustments and drilling might be necessary during the installation process.

Tools Required



Be careful



This item requires two people to install

Frame adjustment

Product Dimension AxB(mm)	frame adjustment A(mm)	frame adjustment B(mm)
900	900-925	>700
1200	1200-1225	>700

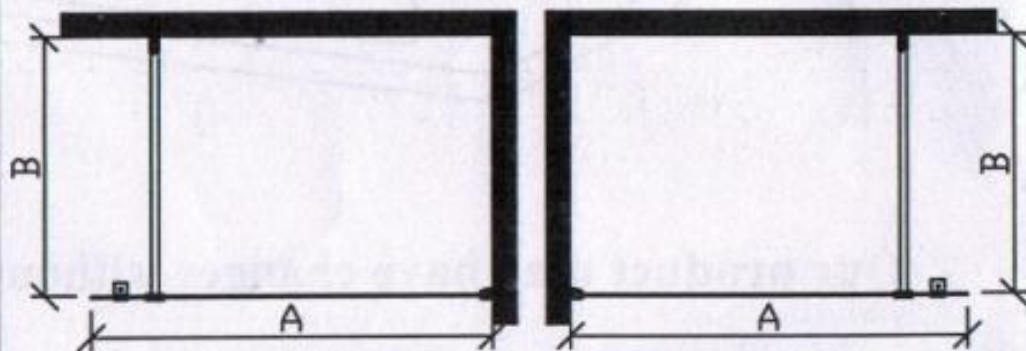
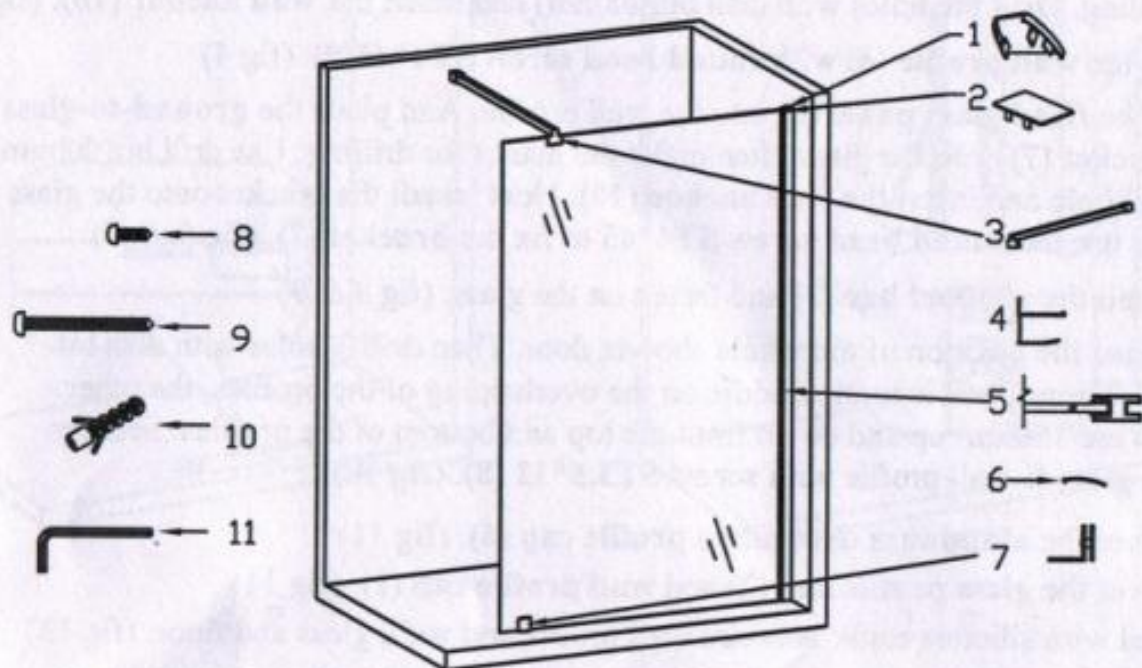


Diagram of Enclosure Components



Packing List

1	Wall profile cap	1pc
2	Glass profile cap	1pc
3	Support bar	1pc
4	Wall profile	1pc
5	Fixed glass panel	1pc
6	Aluminum decorative profile cap	1pc
7	Ground-to-glass bracket	1pc

8	Round head screw ST3.5x12	3pcs
9	Round head screw ST4x45	3pcs
10	Wall Anchor	3pcs
11	Allen key	1pc
12		
13		
14		

Now you have checked that all components are here, you are now ready to start the installation of your shower enclosure.

Assemble steps

1. Make sure the designated position horizontal. (fig 1)
2. Place the **wall profile (4)** to the wall and level it, make sure it is vertical to the floor and wall, then make the marks through the predrilled holes on the aluminum profile for drilling. Drill the holes with drill bit($\Phi 8\text{mm}$) and insert the **wall anchor (10)**. (fig 2 & 3)
3. Fix the **wall profile (4)** with **round head screw ST4*45(9)**. (fig 4)
4. Put the **fixed glass panel (5)** into the wall profile. And place the **ground-to-glass bracket (7)** onto the glass, then make the marks for drilling. Use drill bit($\Phi 8\text{mm}$) to drill hole and insert the **wall anchor (10)**. Next install the bracket onto the glass again and use the **round head screw ST4*45** to fix the **bracket (7)**. (fig 5, 6, 7)
5. Install the **support bar (3)** and fasten on the glass. (fig 8 & 9)
6. Adjust the position of the whole shower door. Then drill 3 holes with drill bit ($\Phi 2.75\text{mm}$), one is in the middle on the overlapping of the profiles, the other two are 150mm up and down from the top and bottom of the profiles. Secure the glass & wall profile with **screw ST3.5*12 (8)**. (fig 10)
7. Cover the **aluminum decorative profile cap (6)**. (fig 11)
8. Cover the **glass profile cap (2)** and **wall profile cap (1)**. (fig 11)
9. Seal with silicone caulk between wall profile and wall, glass and floor. (fig 13)
10. WAIT 24 HOURS BEFORE USING THE SHOWER ENCLOSURE.

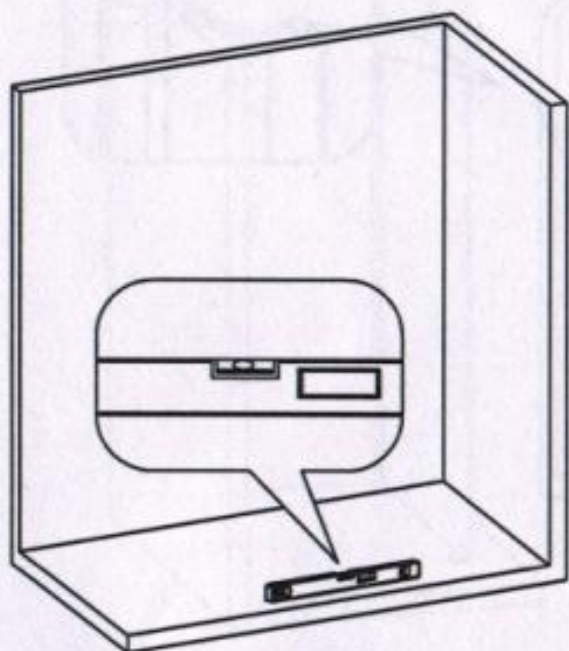


fig 1

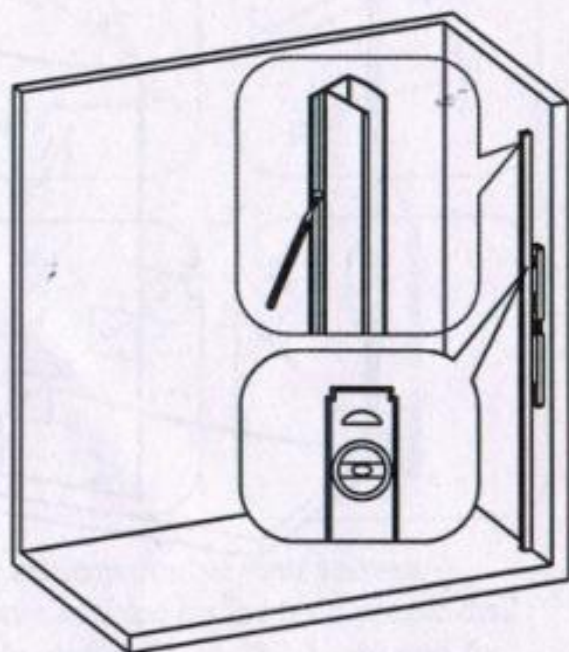


fig 2

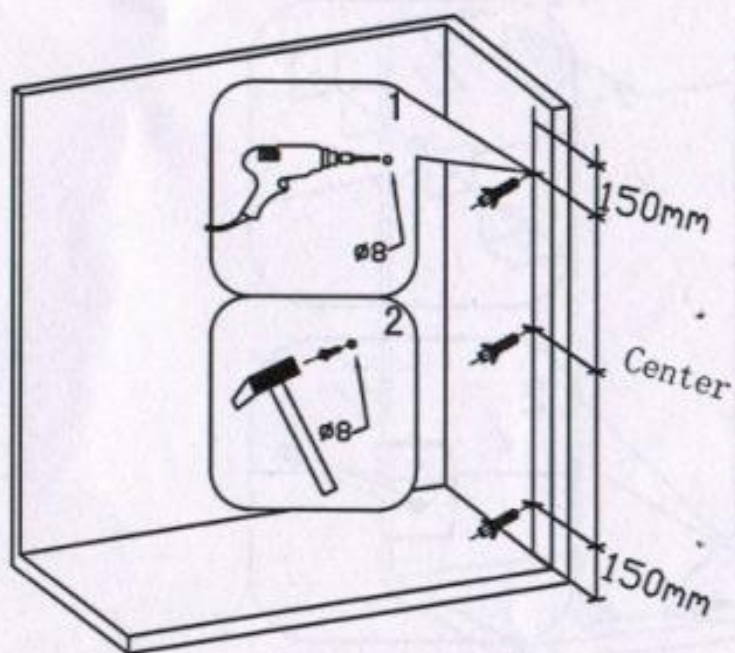


fig 3

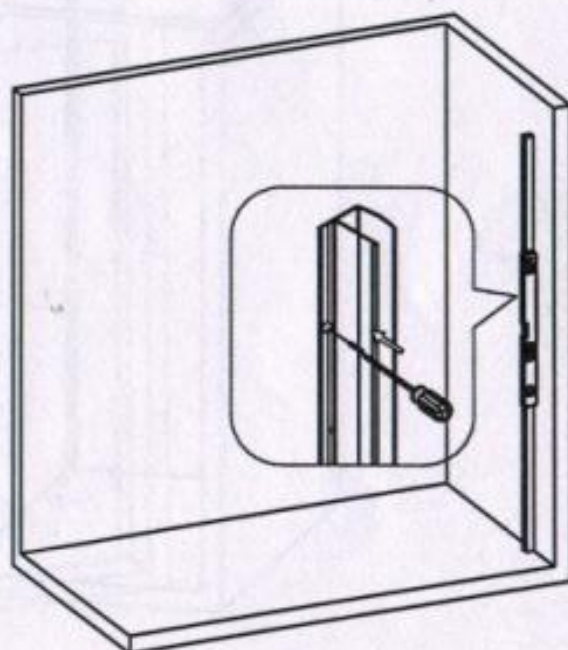


fig 4

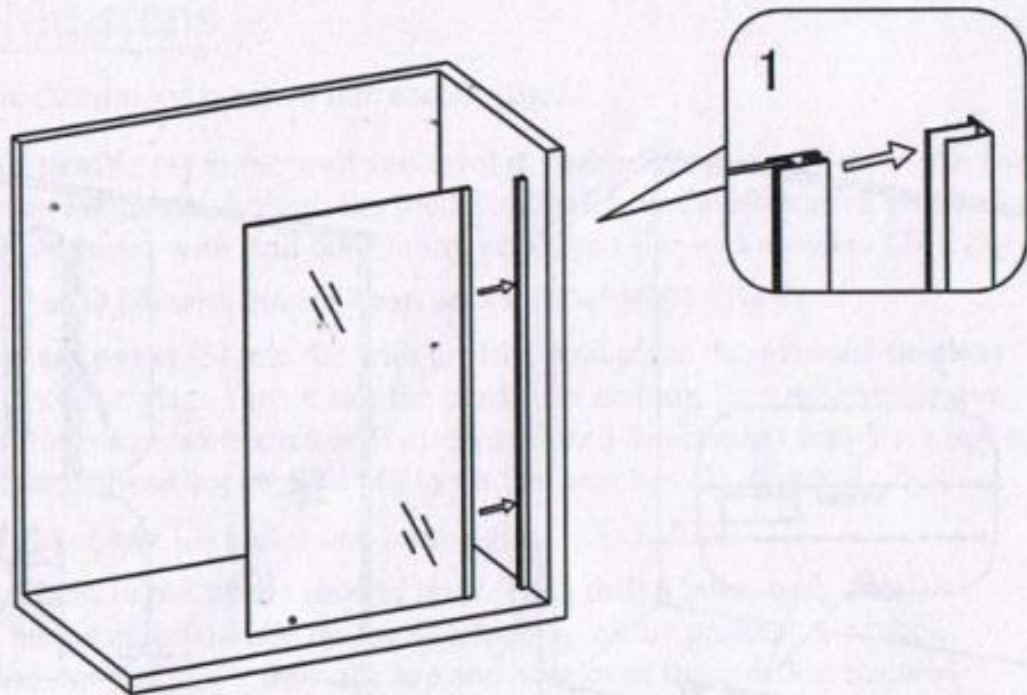


fig 5

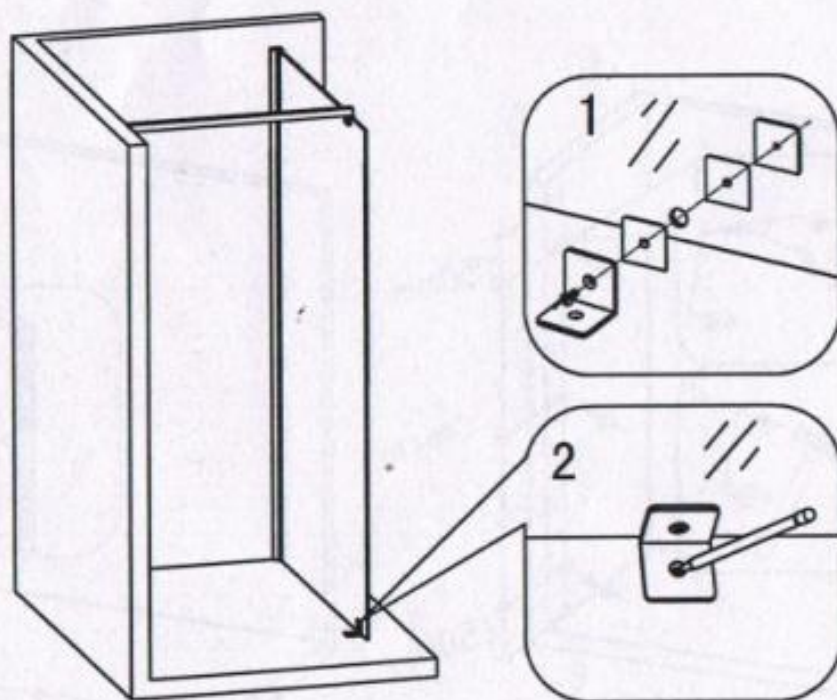
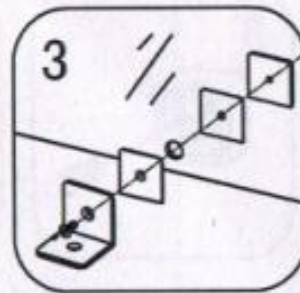
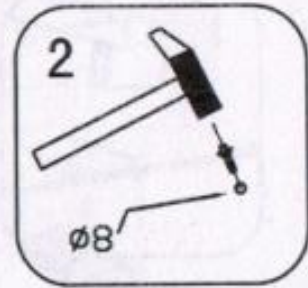
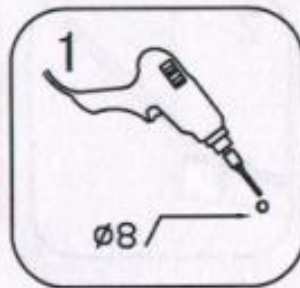
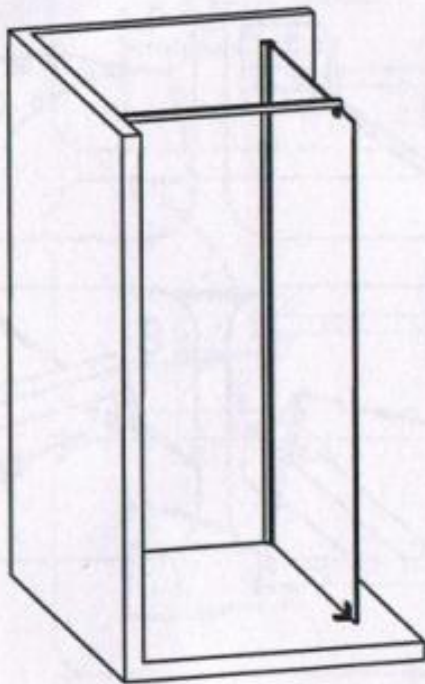


fig 6



Warm information: If your shower enclosure is fixed on the tray, please drill the hole with drill bit ($\varnothing 2.7\text{mm}$) and fix with the matched screw directly.

fig 7

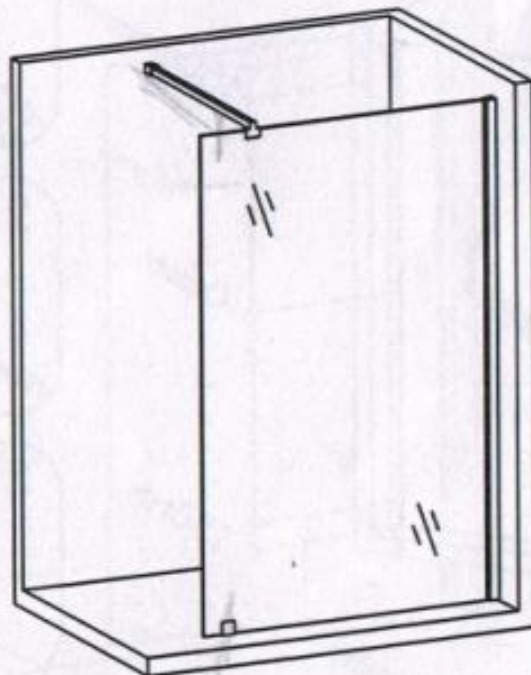


fig 8

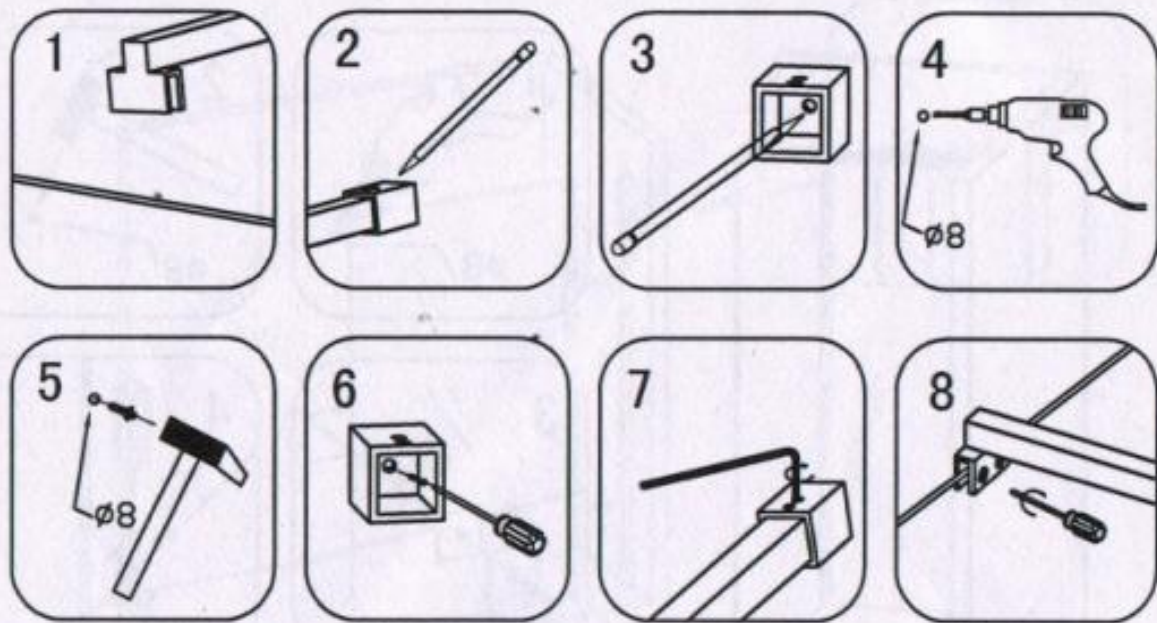


fig 9

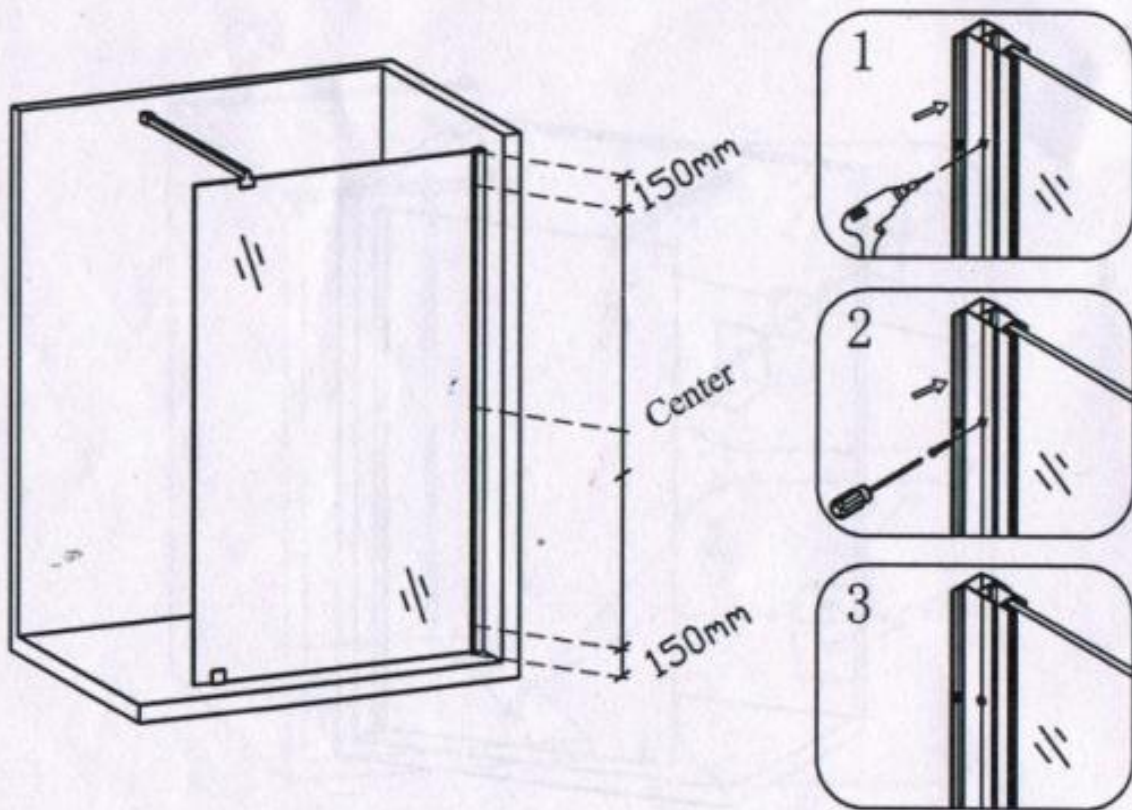


fig 10

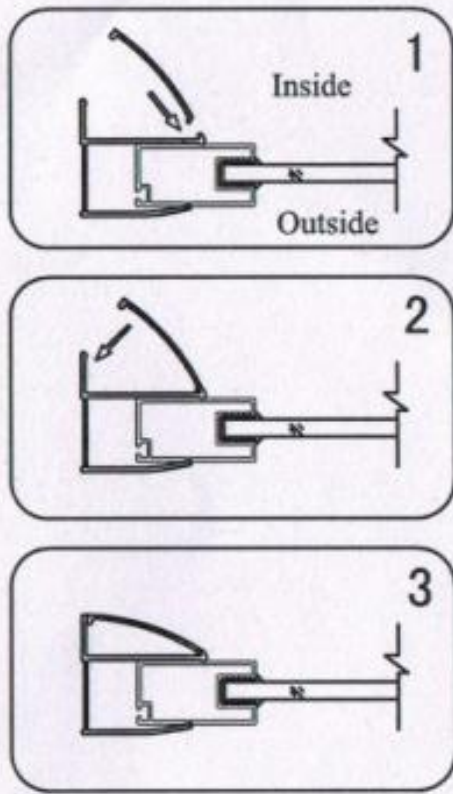


fig 11

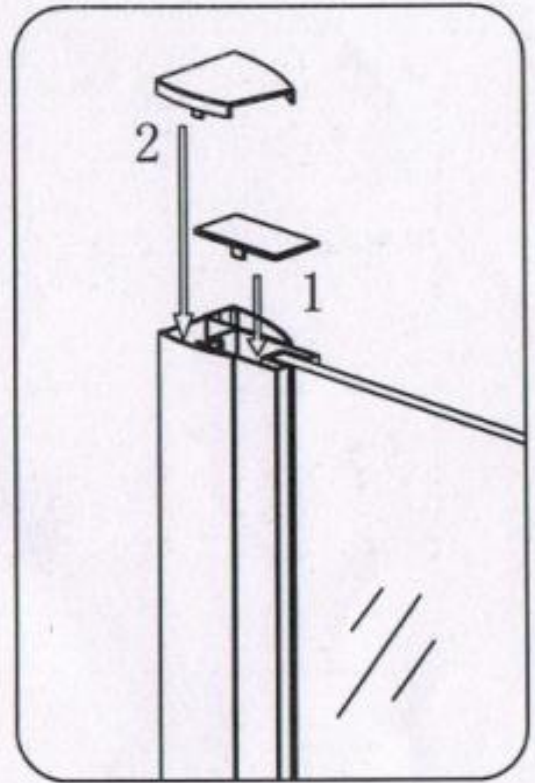


fig12

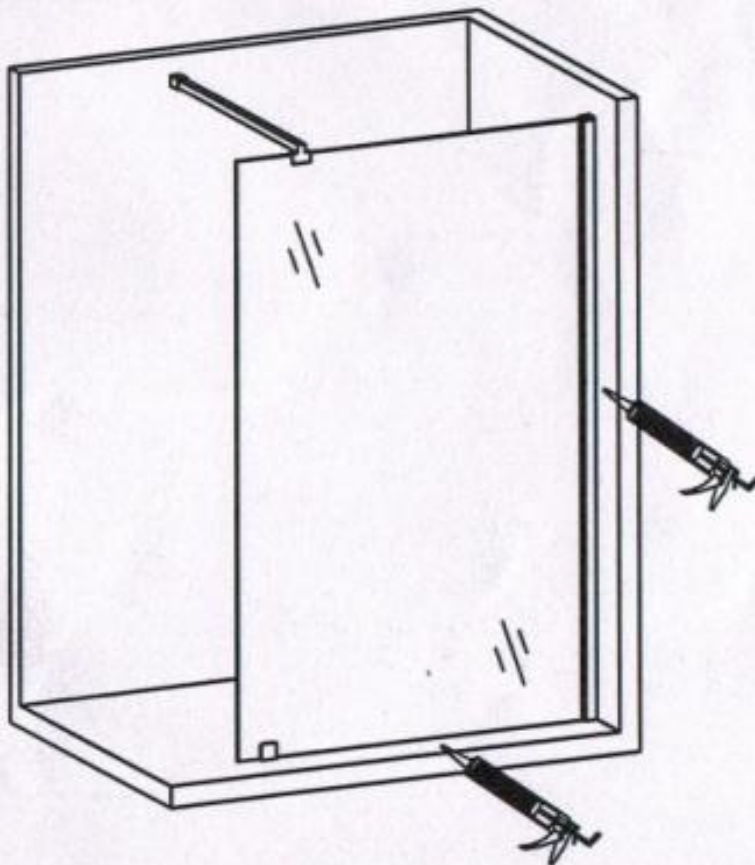


fig 13