

SLIDING DOUBLE DOOR CORNER INSTALLATION INSTRUCTIONS

Model: S6C22



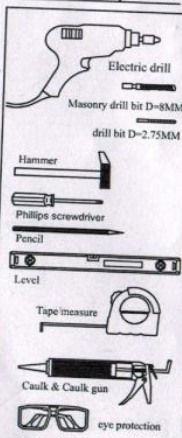
Our product may have changes without prior notice

1

PREPARATION

1. After opening the boxes, read this instruction carefully, check all the packed parts are complete by cross checking all the components against the "Detailed Diagram of Shower Enclosure Components". Examine for shipping damage. If the unit has been damaged, has a finishing defect or has missing parts please contact your local distributor within 3 business days. Contact your distributor if you have any questions.
2. Please note that you should consult your local building codes on questions on installation compliance standards (if required).
3. Install all the required plumbing and drainage before securing the shower. Use a competent and licensed (if required) plumber for all plumbing installation.
4. Please insure that prior to the installation the floor is leveled and solid and will be able to support the total weight of the unit and its occupant. Also make sure the walls are at the right angles. While some adjustment in leveling of the tray is possible, irregular floor level or improper angle of side walls will result in serious problems for your installation. Please, note that there are some adjustments and drilling might be necessary during the installation process.

Tools Required



Frame adjustment

Product Dimension AxB (mm)	frame adjustment A (mm)	frame adjustment B (mm)
900X900	865~890	865~890
1000X1000	965~990	965~990
1220X900	1185~1210	865~890

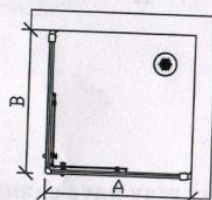
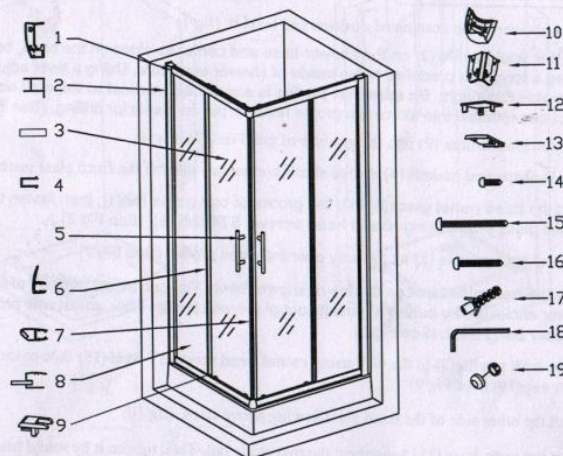


Diagram of Enclosure Components



Packing List

1	Guild rail	4pcs	12	Wall profile cover	2pcs
2	Wall profile	2pcs	13	Glass profile cover	2pcs
3	Glass door	2pcs	14	Round head screw ST3.5x12	16pcs
4	U-shape seal gasket	6pcs	15	Round head screw ST4x45	8pcs
5	Handle	2pcs	16	Round head screw ST4x30	18pcs
6	Anti-water strip	4pcs	17	Wall anchor	8pcs
7	Magnetic strip	2pcs	18	Allen key	1pc
8	Fixed glass w/ glass profile	2pcs	19	Screw cap	14pcs
9	Glass plug	4pcs	20		
10	Angle cap	2pcs	21		
11	Angle base	2pcs	22		

Now you have checked that all components are here, you are now ready to start the installation of your shower enclosure.

3

Assemble steps

1. Put the shower at the designated position and level it. (fig 1)
2. Place the **wall profile (2)** on the shower base and center its sides on the base, be sure to keep a tong with predrilled holes inside of shower enclosure. Using a level adjust the wall profile (2) upright. **Be sure that profile is absolutely vertical to the wall and base.** Then use predrilled into aluminum profile holes to put on marks for drilling. (See Fig 2,3)
3. Insert the glass holder (9) into the grooves of guild rail (1). (fig 4)
4. Place U-shape seal gaskets (4) on two short (horizontal) sides of the fixed glass panel (8). (fig 5)
5. Insert the **fixed panel glass(8)** into the groove of one **guide rail(1)**, then fasten the guide rail and glass profile using **round head screws ST4x30(16)**. (See Fig 6)
6. Push the **wall profile (2)** all the way over the glass profile. (See Fig 7)
7. Carry the assembled unit on the top of shower base. You can adjust position of the shower enclosure by pulling it partially out of the wall profile. Now, adjust wall profiles vertically using level. (See Fig 8)
8. Fix the **wall profile(2)** to the wall using **round head screw ST 4x45(15)** then cover the **screw cap(19)**. (See Fig 9)
9. Install the other side of the fixed glassflowing above steps. (fig 10)
10. Using the angle base (11) to connect the two guide rail. Then tighten it by round head screw ST 3.5x12. Finally, cover the angle cap (10). (fig 11)
11. Install handles(5) and magnetic strips (7) on the door glass(3). (fig 12)
12. Refer to diagram (from Fig 13 to 15) how to install **Glass doors (3)** to the **guide rail(1)**.
 - a. Slide top roller into the top guide rail (See Fig 15-1) note that the roller goes on the top has an adjustable screw to adjust the door level and it should face up. (See Fig 15)
 - b. Adjust the glass door to the lowest position by the adjustable screw, and push the bottom roller to the bottom guide rail by pressing down the button. (See Fig 15-3, 15-4)
 - c. Adjust the upper rollers again, make sure they move smoothly and the doors close tight. (See Fig 15-5)
13. Install the anti-water strip (6) into the vertical side of the fixed glass and door glass. (fig 15-16)
14. Refer to the diagram (see fig 16) how to fasten the wall profile and glass profile. Drill 3 holes with **D=2.75mm drill bit** on the glass profile. One is the middle of the overlapping between glass profile and wall profile, the other two is 150mm up and down from the top and bottom of the profiles. Secure the wall profile and glass profile with **round head screws ST3.5x12(14)** then cover the **screw caps (19)**. (See Fig 16)
15. Cover all the profile cover. (fig 17)
16. Seal with silicone caulk between wall profile and wall, bottom rail guild and base. (fig 18)
17. WAIT 24 HOURS BEFORE USING THE SHOWER ENCLOSURE.

4

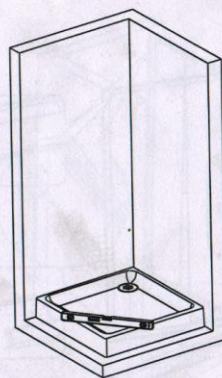


fig 1

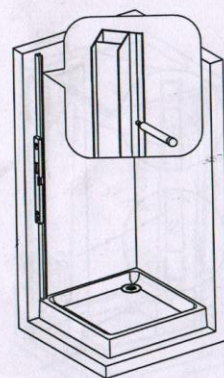


fig 2

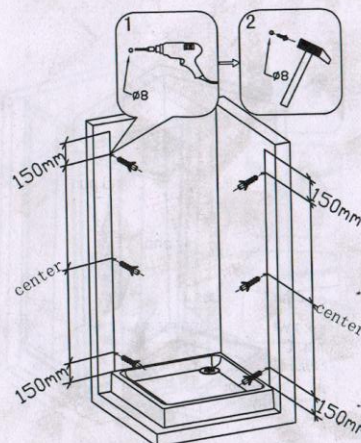


fig 3

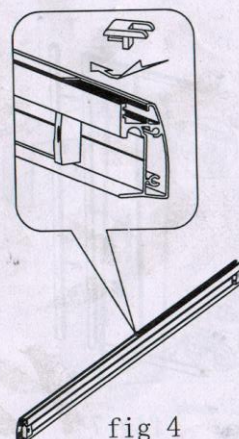


fig 4

5

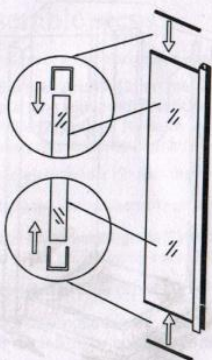


fig 5

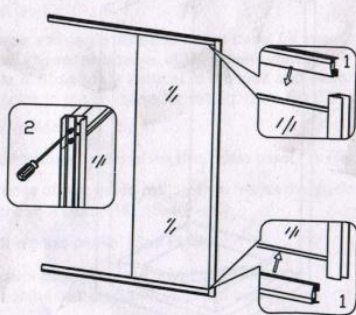


fig 6

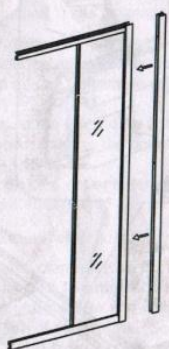


fig 7

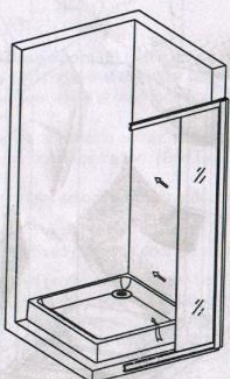


fig 8

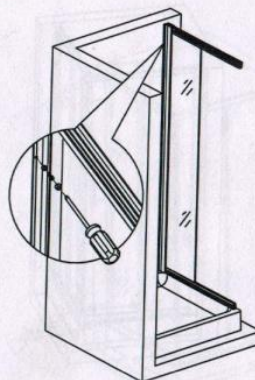


fig 9

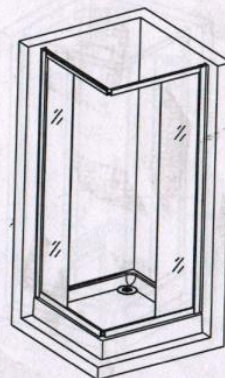


fig 10

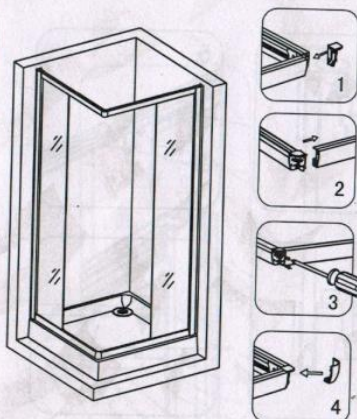


fig 11

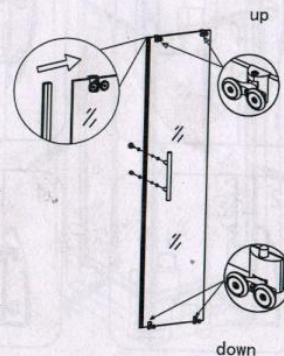


fig 12

7

6

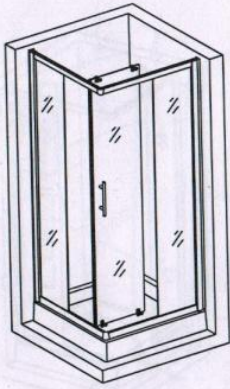


fig 13

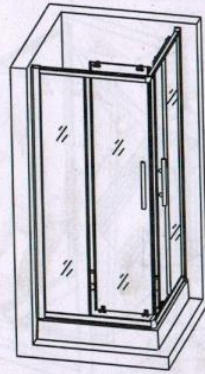


fig 14

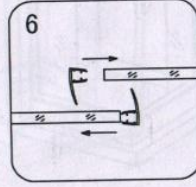
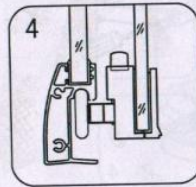
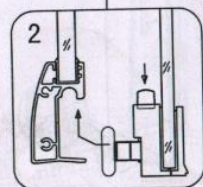
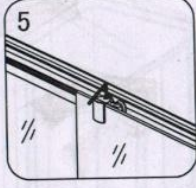
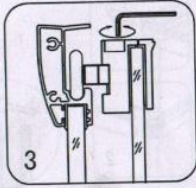
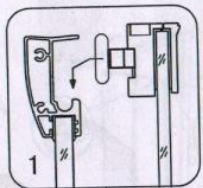


fig 15

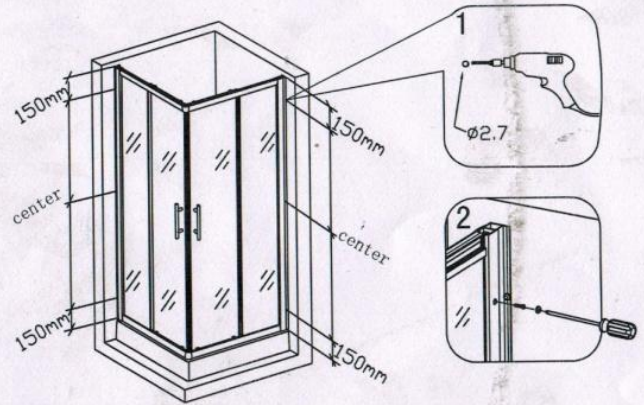


fig 16

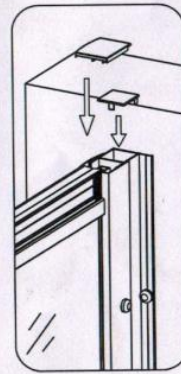


fig 17

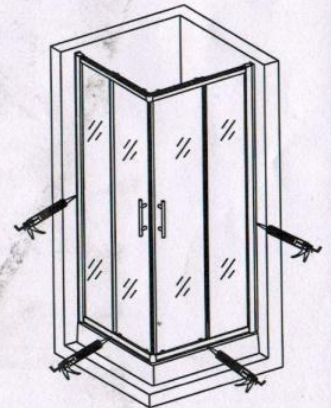


fig 18