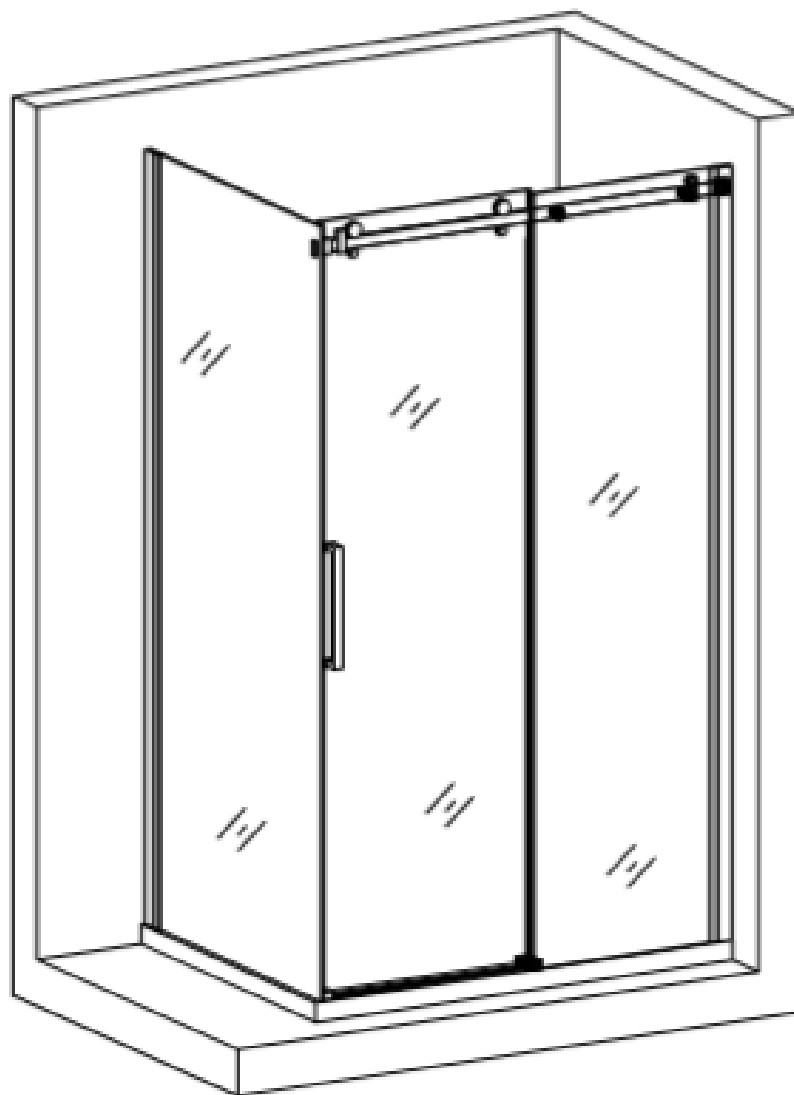


SHOWER ENCLOSURE HANGING WHEEL SLIDING DOOR INSTALLATION INSTRUCTIONS

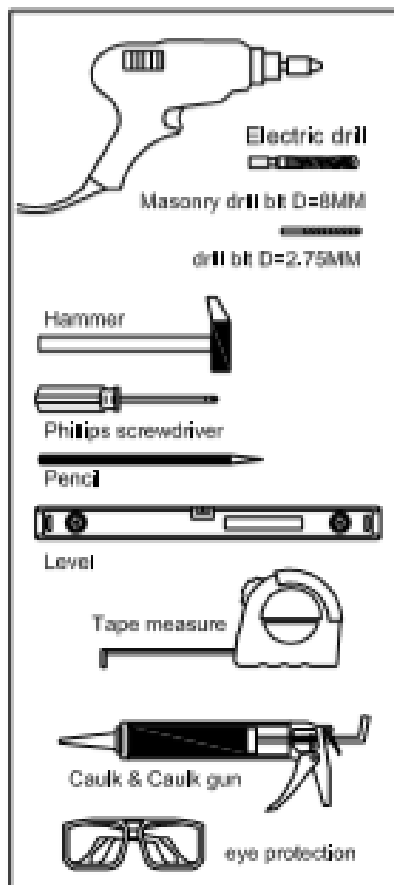


Our product may have changes without prior notice

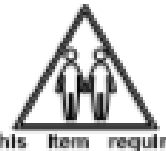
PREPARATION

1. After opening the boxes, read this instruction carefully, check all the packed parts are complete by cross checking all the components against the "Detailed Diagram of Shower Enclosure Components". Examine for shipping damage. If the unit has been damaged, has a finishing defect or has missing parts please contact your local distributor within 3 business days. Contact your distributor if you have any questions.
2. **Please note that you should consult your local building codes on questions on installation compliance standards (if required).**
3. Install all the required plumbing and drainage before securing the shower. Use a competent and licensed (if required) plumber for all plumbing installation.
4. Please insure that prior to the installation the floor is leveled and solid and will be able to support the total weight of the unit and its occupant. Also make sure the walls are at the right angles. While some adjustment in leveling of the tray is possible, irregular floor level or improper angle of side walls will result in serious problems for your installation. Please, note that there are some adjustments and drilling might be necessary during the installation process.

Tools Required



Frame adjustment



Product Dimension(mm)	frame adjustment A(mm)	frame adjustment B(mm)
	≅ 1220	≅ 900

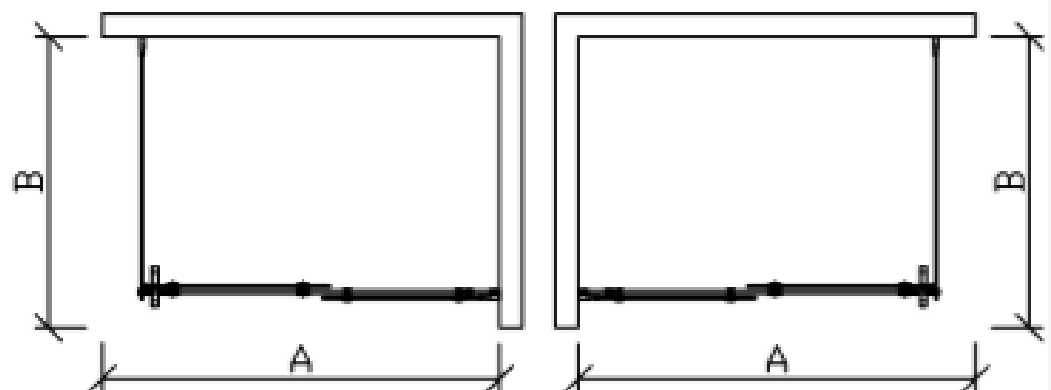
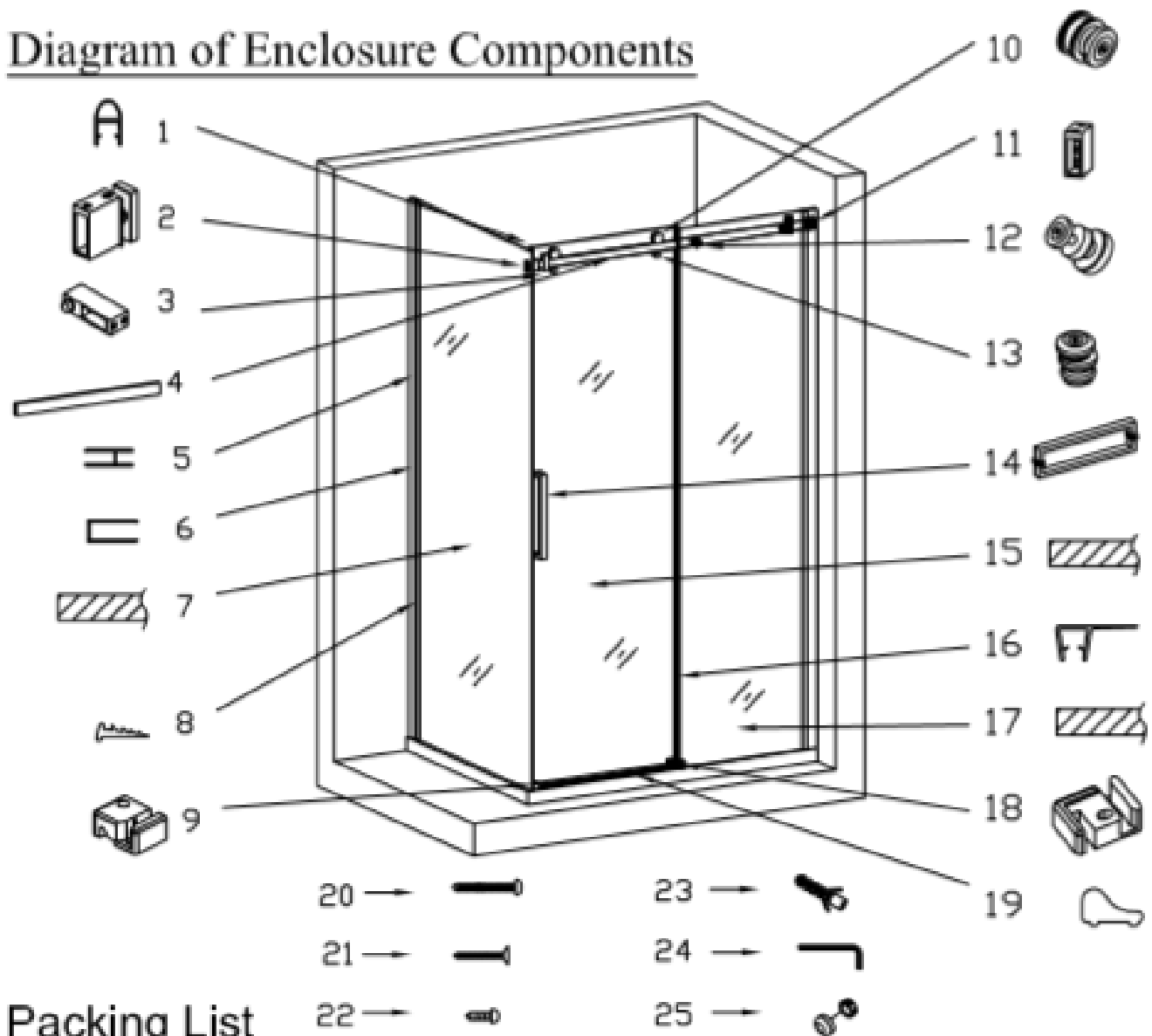


Diagram of Enclosure Components



Packing List

1	Anti-Water Strip	1pc
2	Return panel's fixed wall base	1pc
3	Glass stopper	2pcs
4	Support Bar	1pc
5	Glass profile	2pcs
6	Wall profile	2pcs
7	Return panel glass	1pc
8	Unilateral strip	2pcs
9	Side Navigational Block	1pc
10	Wheel	2pcs
11	Fixed wall base	1pc
12	Glass holder	2pcs

13	Safety pin	2pcs
14	Handle	1pc
15	Glass door	1pc
16	Side anti-water strip	2pcs
17	Fixed glass	1pc
18	Middle Navigational Block	1pc
19	Bottom aluminum strip	2pc
20	Round head screw ST4*45	6pcs
21	Flat head screw ST4*25	2pcs
22	Round head screw ST3.5*12	6pcs
23	Wall anchor	6pcs
24	Allen key	1pc
25	Screw caps	6pcs

Now you have checked that all components are here, you are now ready to start the installation of your shower enclosure.

Assemble Steps

1. Put the tray at the designated position and level it. (Fig 1)
2. Seal with silicone inside the **glass profile (5)**, then put the **return panel glass (7)** into glass profile, and then insert the **unilateral strip (8)**. (Fig 2)
3. Place the **wall profile (6)** centrally and vertically above the ground, using a level adjust the wall profile upright, then make the marks through the predrilled holes on the wall profile for drilling. Now drill the holes with drill bit ($\Phi 8\text{mm}$) and insert the **wall anchor (23)**. Then lock tightly the wall profile with **round head screw ST4*45 (20)**. (Fig 3)
4. Place the return panel into wall profile and adjust the position. (Fig 4)
5. Put the **glass stopper (3)** into **support bar (4)**, and screw gently the screws. (Fig 5)
6. Install the **return panel's fixed wall base (2)** to **return panel glass (7)**, and put the support bar into return panel's fixed wall base. Put the **fixed wall base (11)** into the other side of support bar. Then make the marks through the predrilled holes on the fixed wall base. Now drill the holes with drill bit ($\Phi 8\text{mm}$) and insert the **wall anchor (23)**. Then lock tightly with **round head screw ST4*45 (20)**. (Fig 6)
7. Fix the **wall profile (6)** on the wall, then install **glass profile (5)** and **fixed glass (17)**. (Fig 7 & 8)
8. Install the **glass holder (12)** on the **fixed glass (17)**. (Fig 9)
9. Insert the **bottom aluminum strip (19)** into the pot holes of **side navigational block (9)** and **middle navigational block (18)**. Install the **side anti-water strip (16)** on the fixed glass. (Fig 10)
10. Make the marks through the predrilled holes on the side navigational block and middle navigational block. Drill holes and fasten with screws. (Fig 11)
11. Install the **wheel (10)**, **side anti-water strip (16)** and **handle (14)** on the **glass door (15)**. (Fig 12)
12. Hang the wheels of glass door on the support bar, and put the bottom of glass door into the pot holes of side navigational block and middle navigational block. (Fig 13)
13. Install the **safety pin (13)** to glass door, then adjust the safety pin and glass door at the same horizontal position. (Fig 14)
14. Adjust the bedded position of wall profiles and glass profiles, and cover the **screw caps (25)**. (Fig 15)
15. Seal with silicone caulk between wall, glass and tray or ground. (Fig 16)
16. **WAIT 24 HOURS BEFORE USING THE SHOWER ENCLOSURE.**

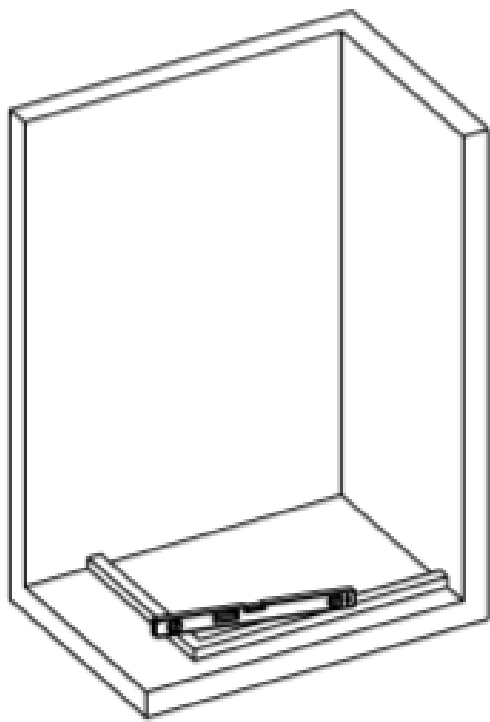


Fig 1

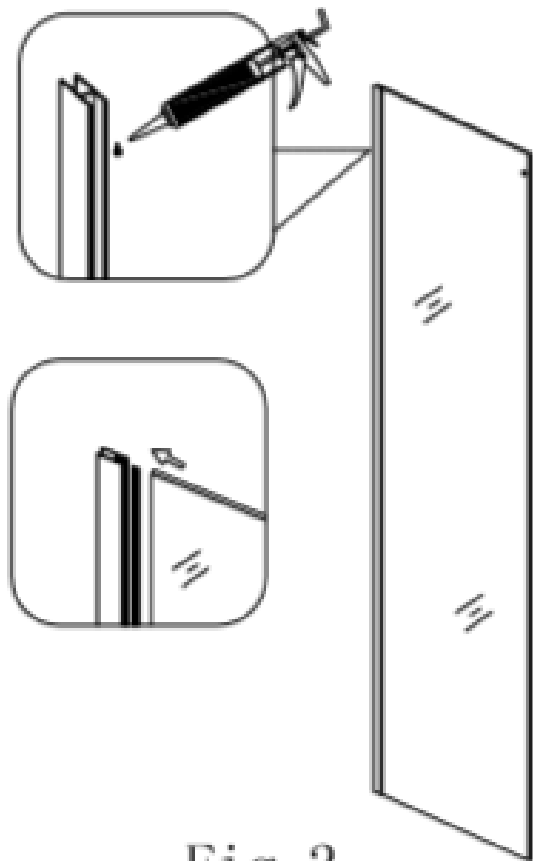


Fig 2

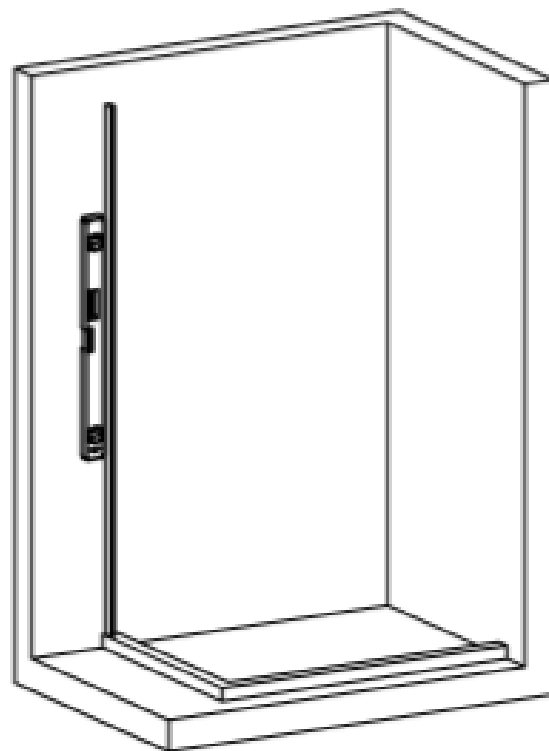
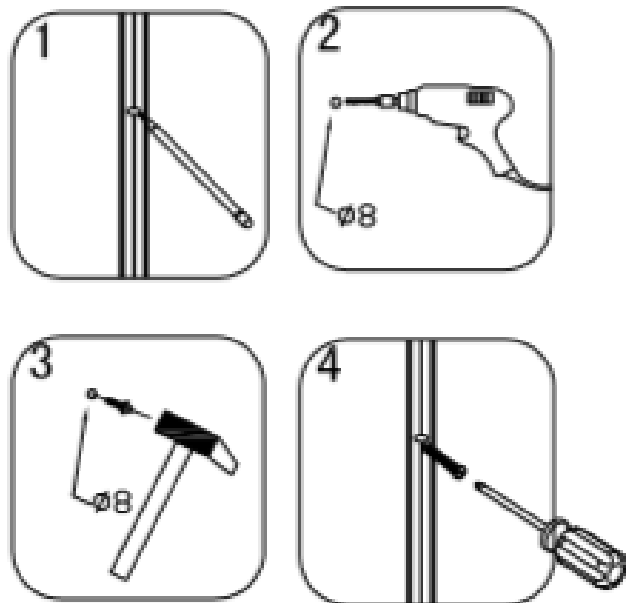


Fig 3

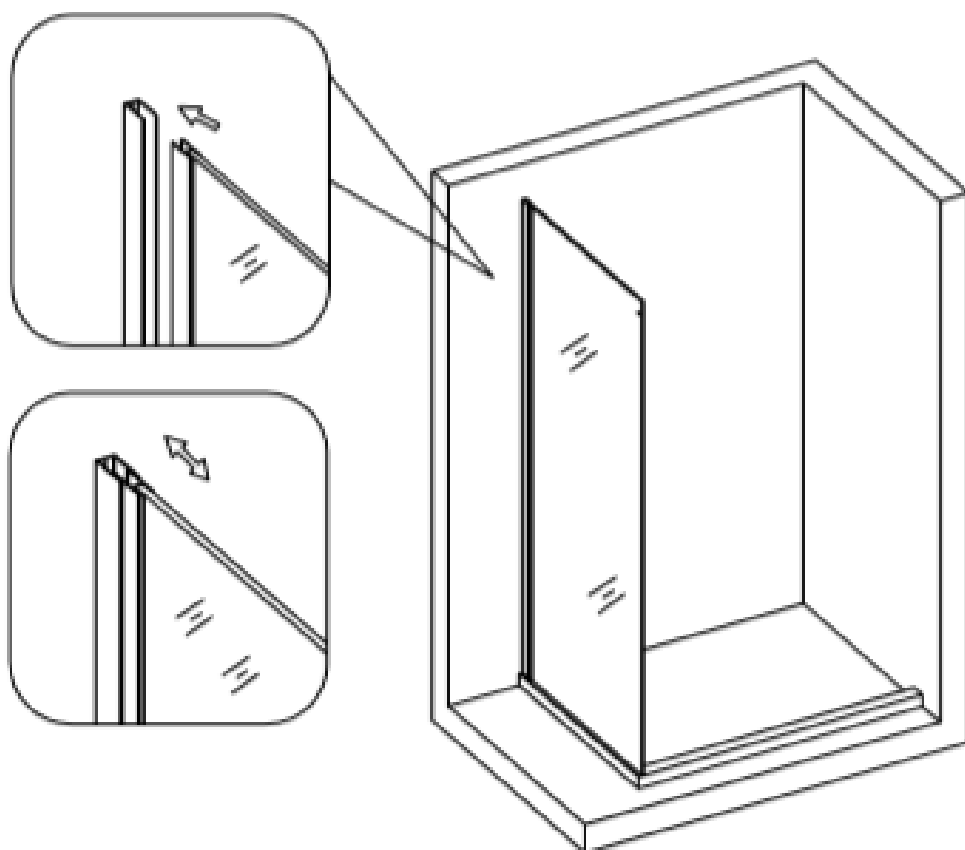


Fig 4

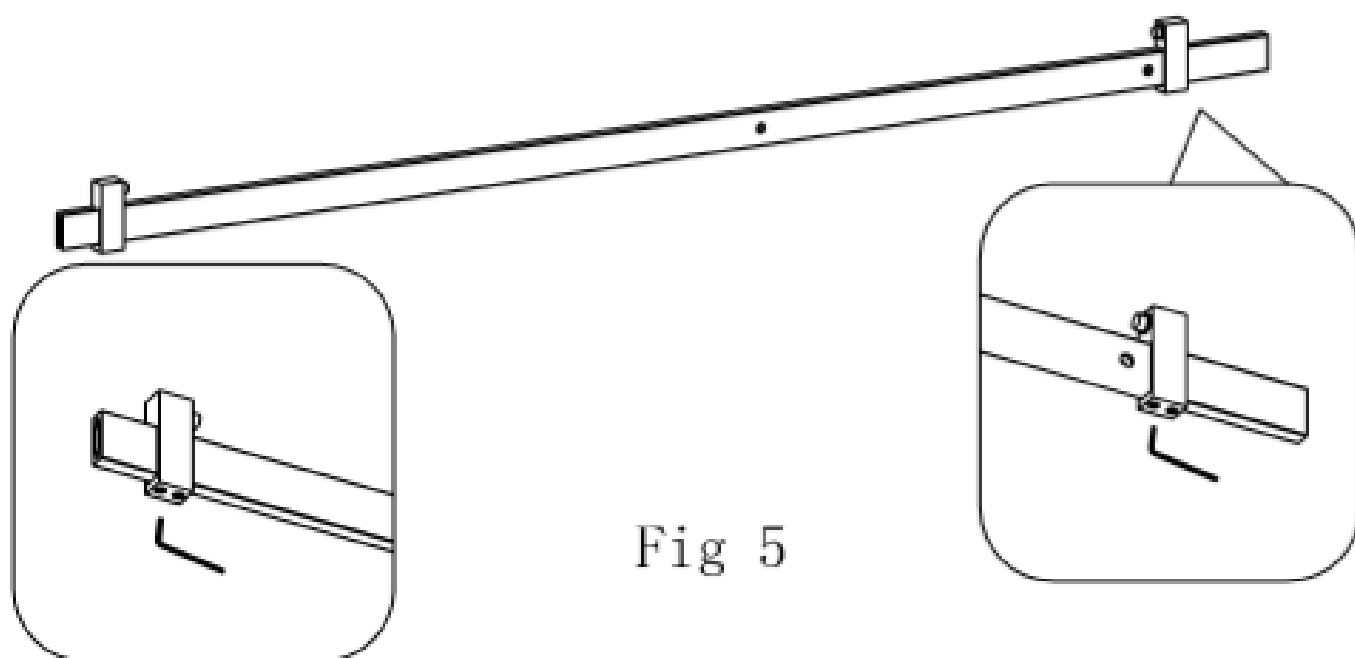


Fig 5

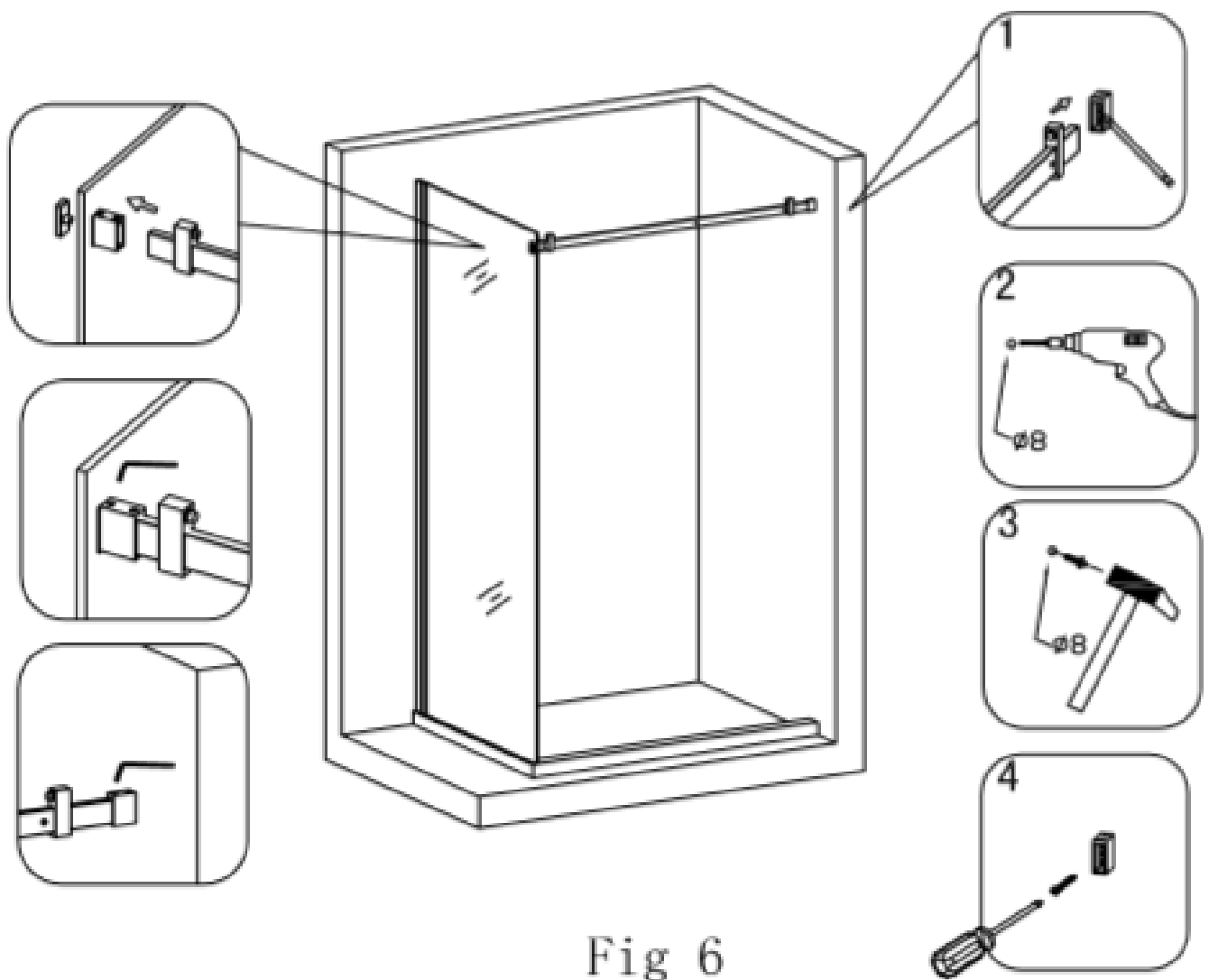


Fig 6

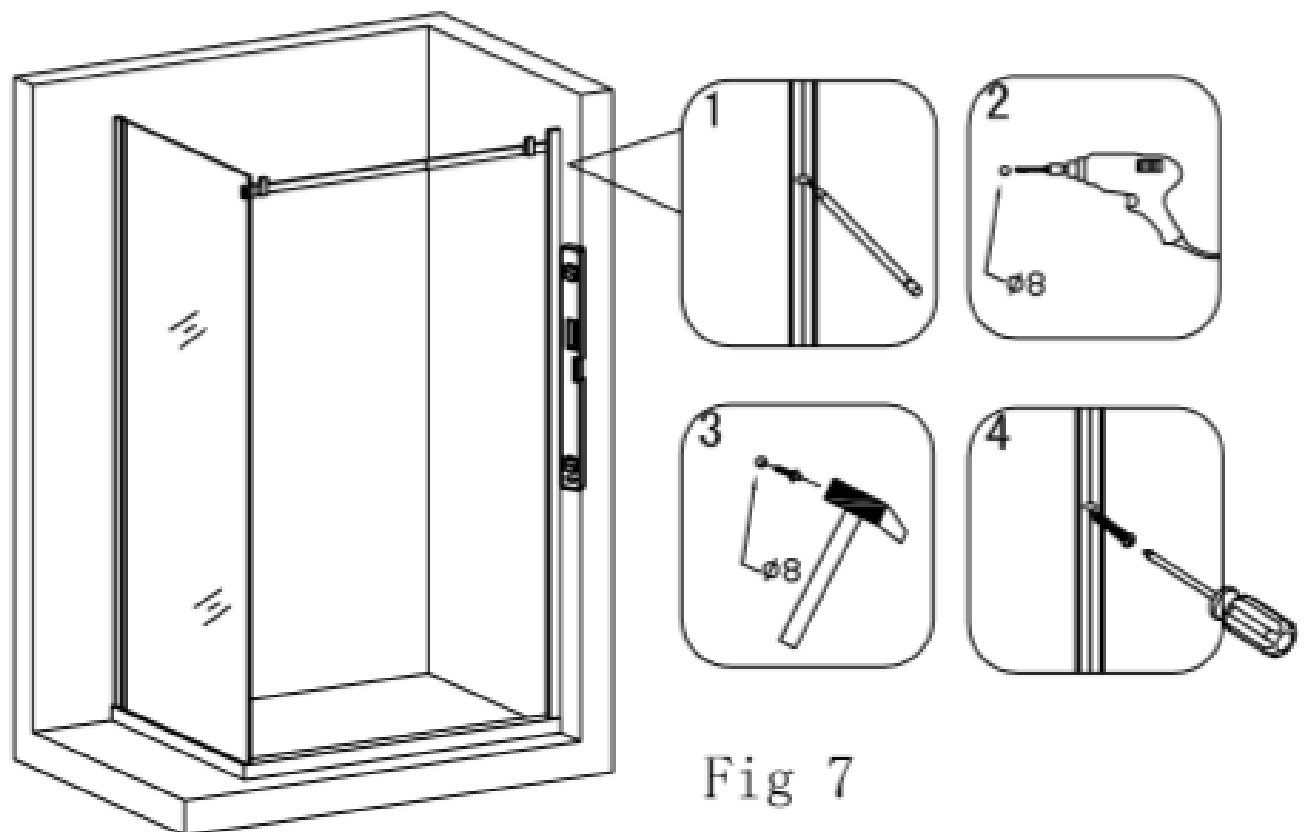


Fig 7

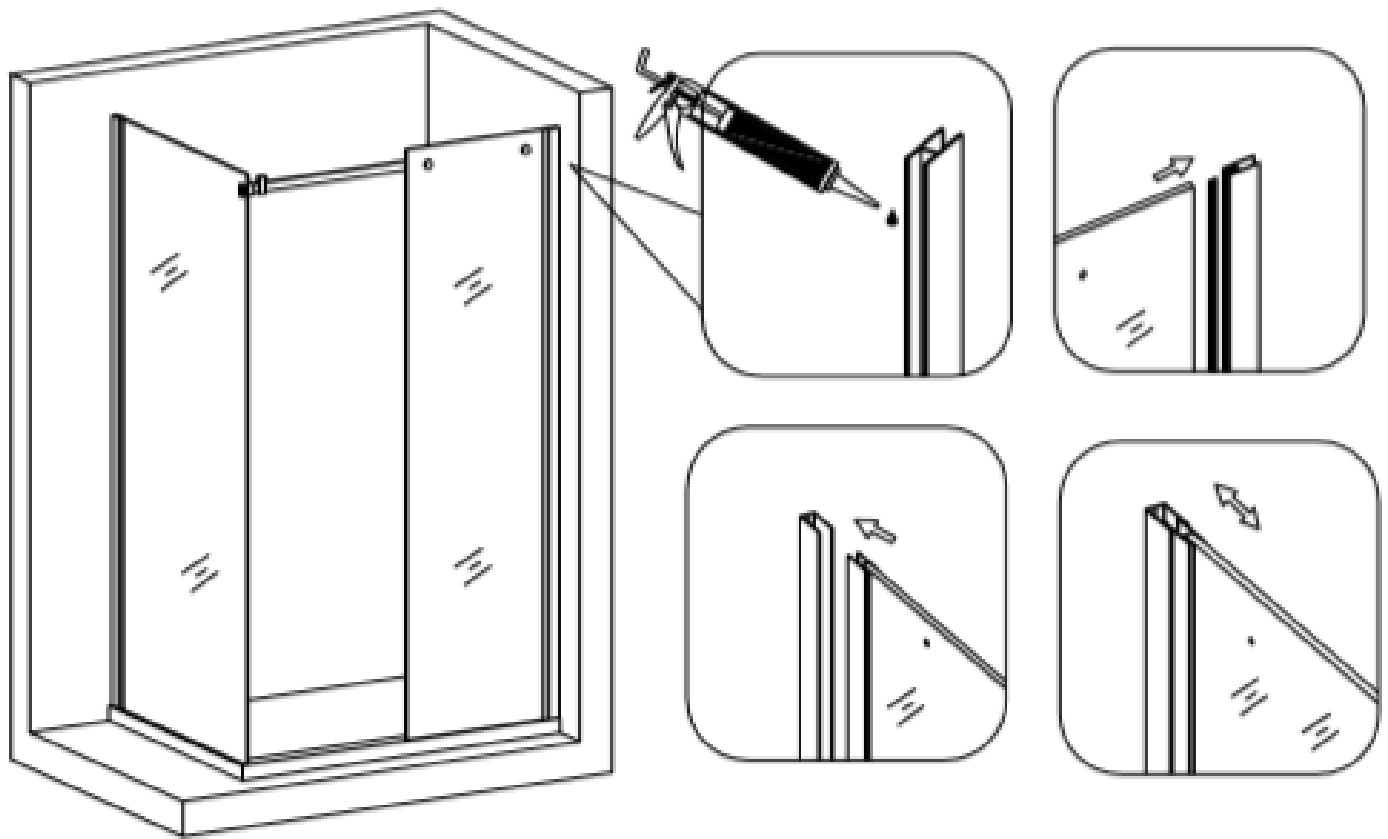


Fig 8

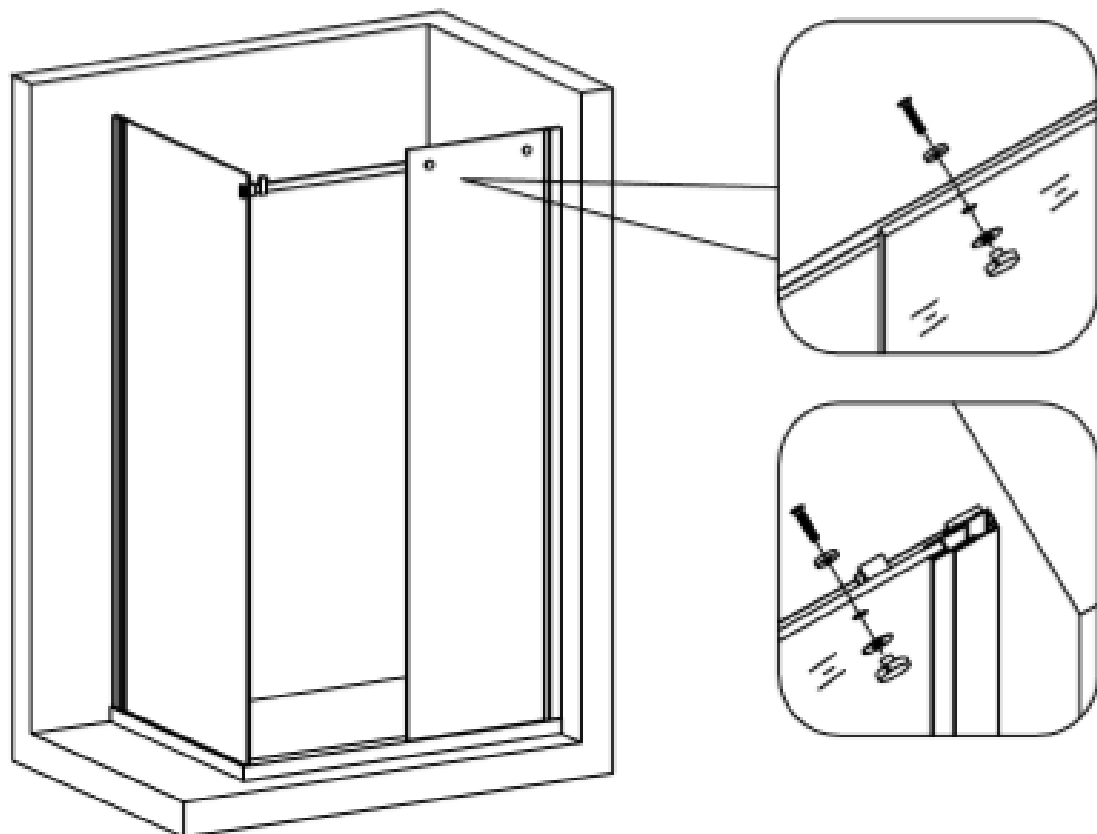


Fig 9

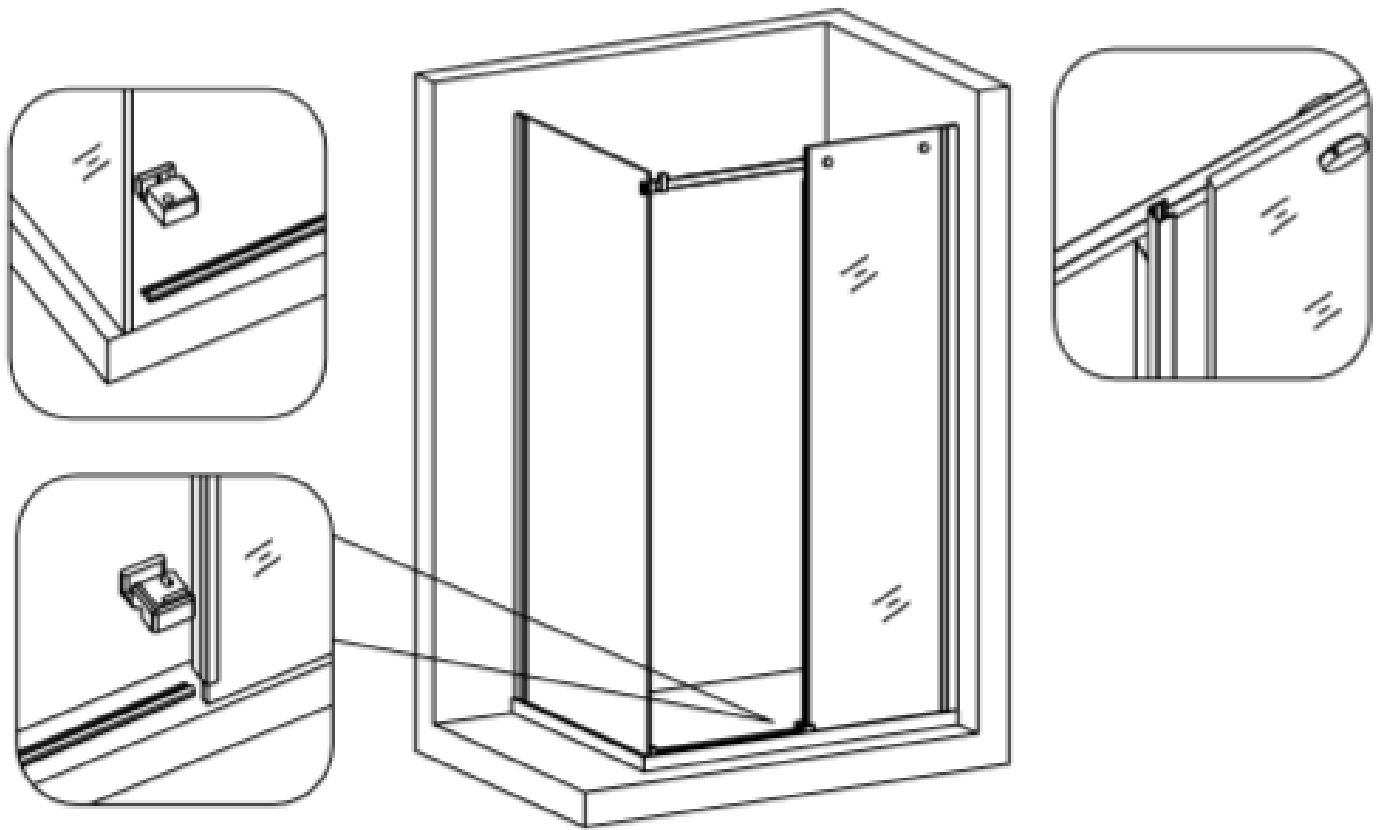


Fig 10

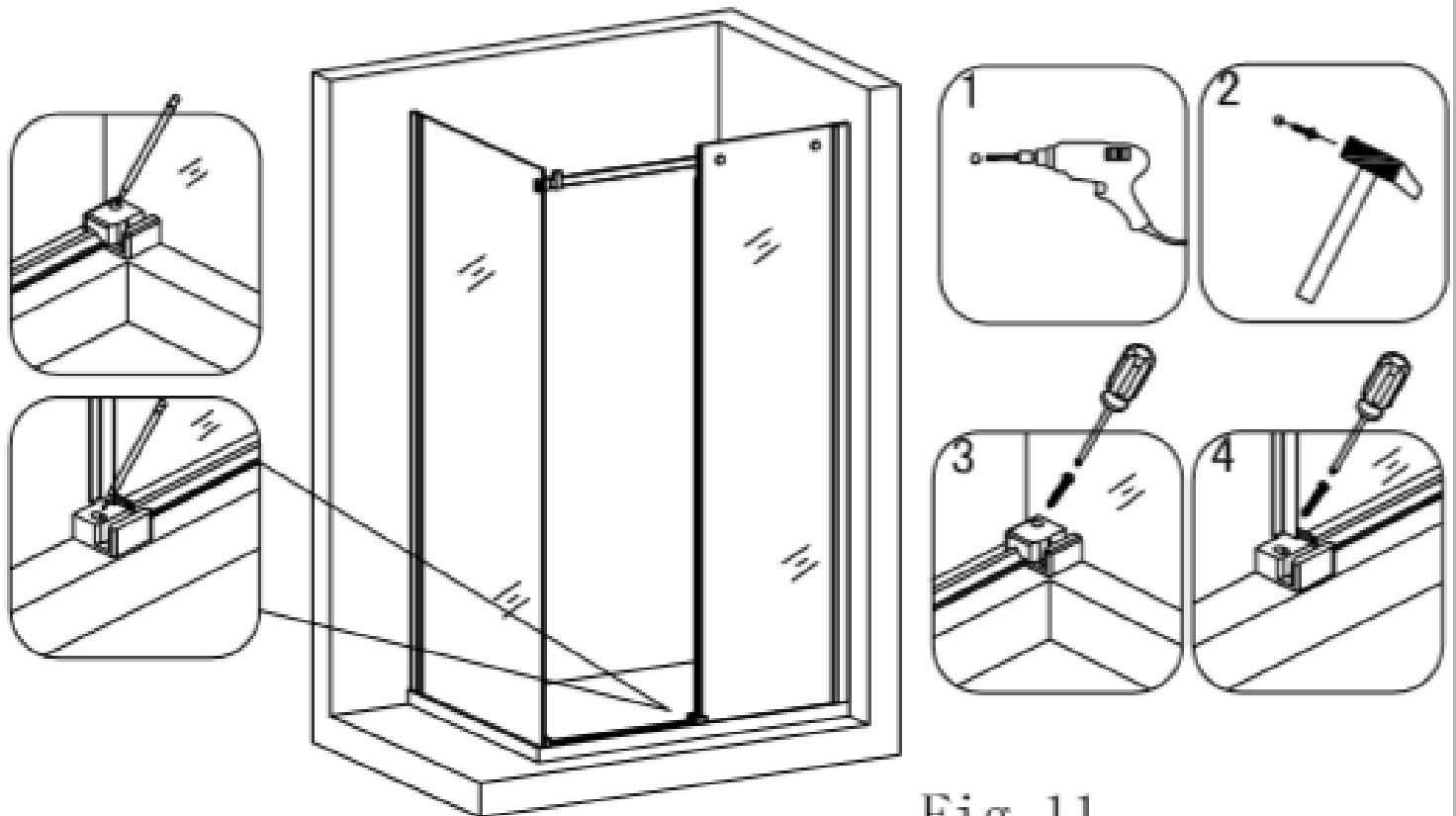


Fig 11

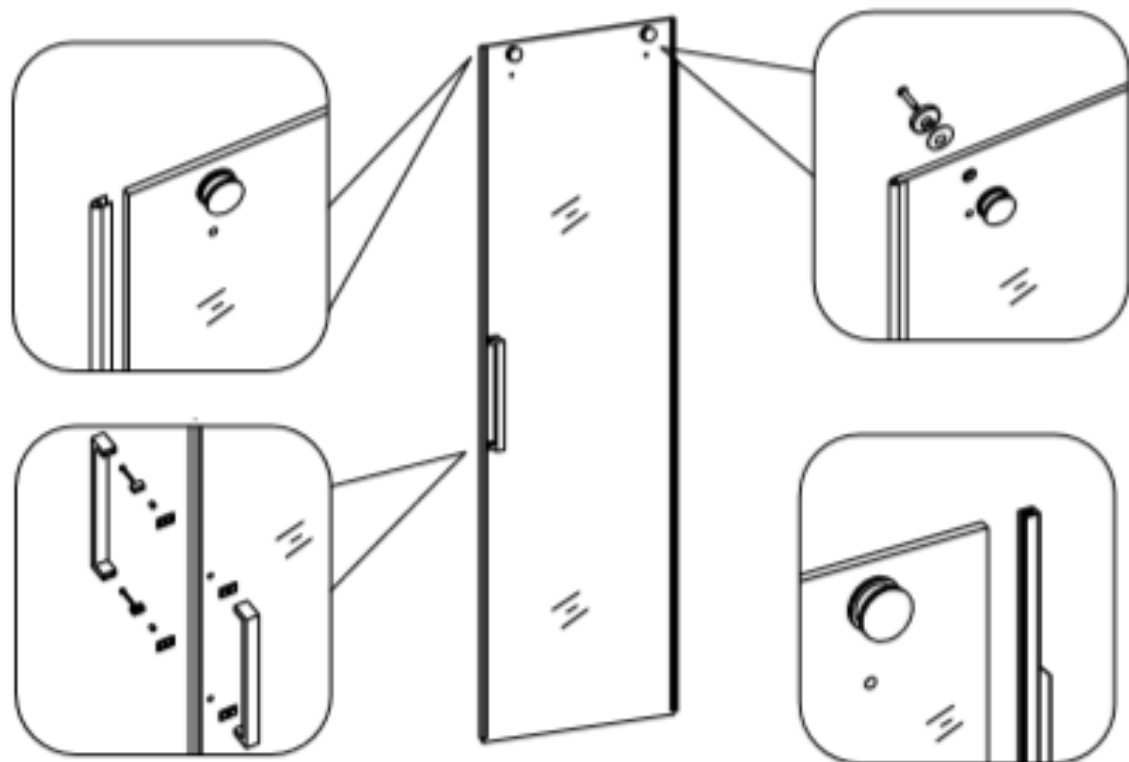


Fig 12

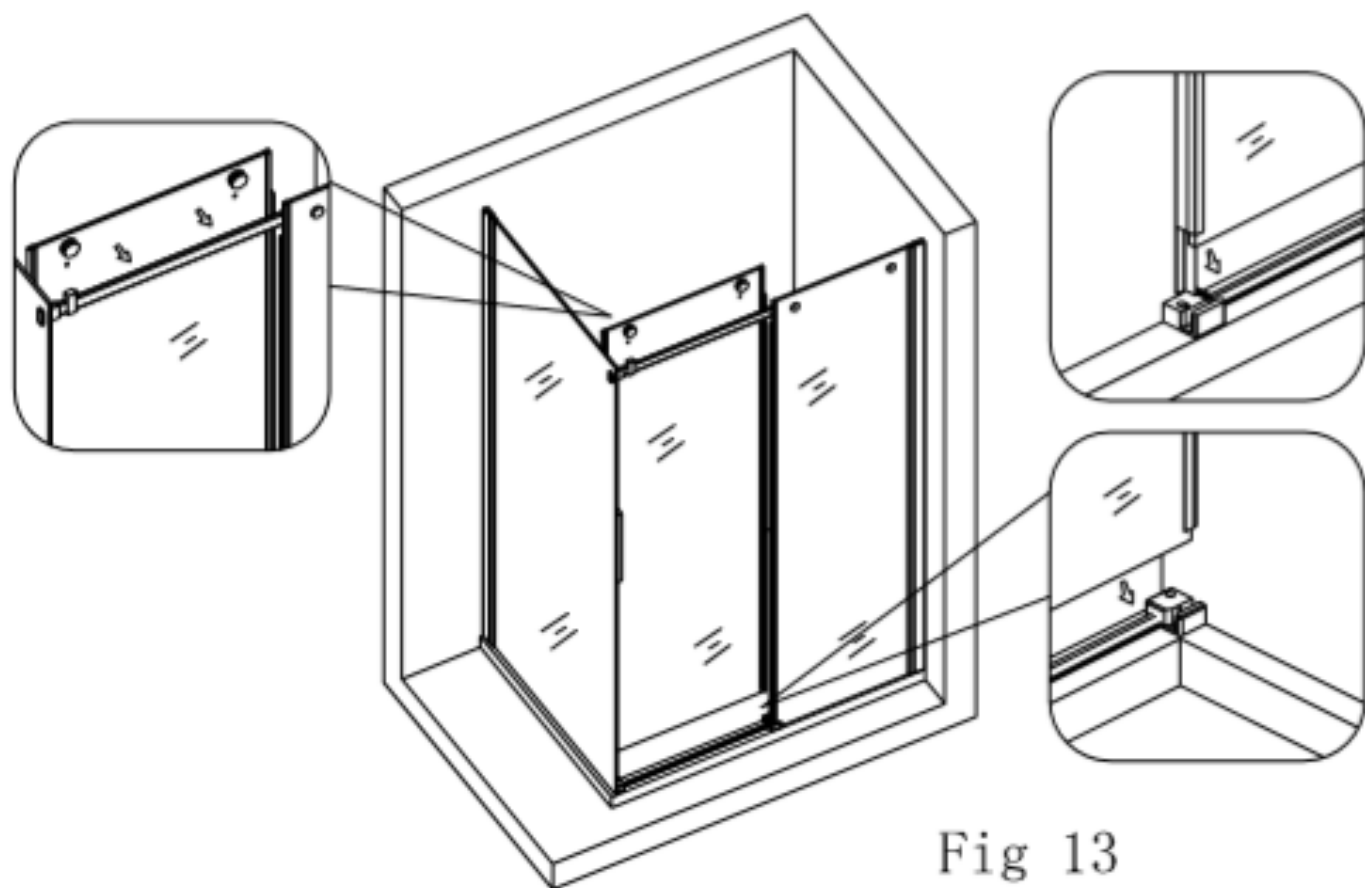


Fig 13

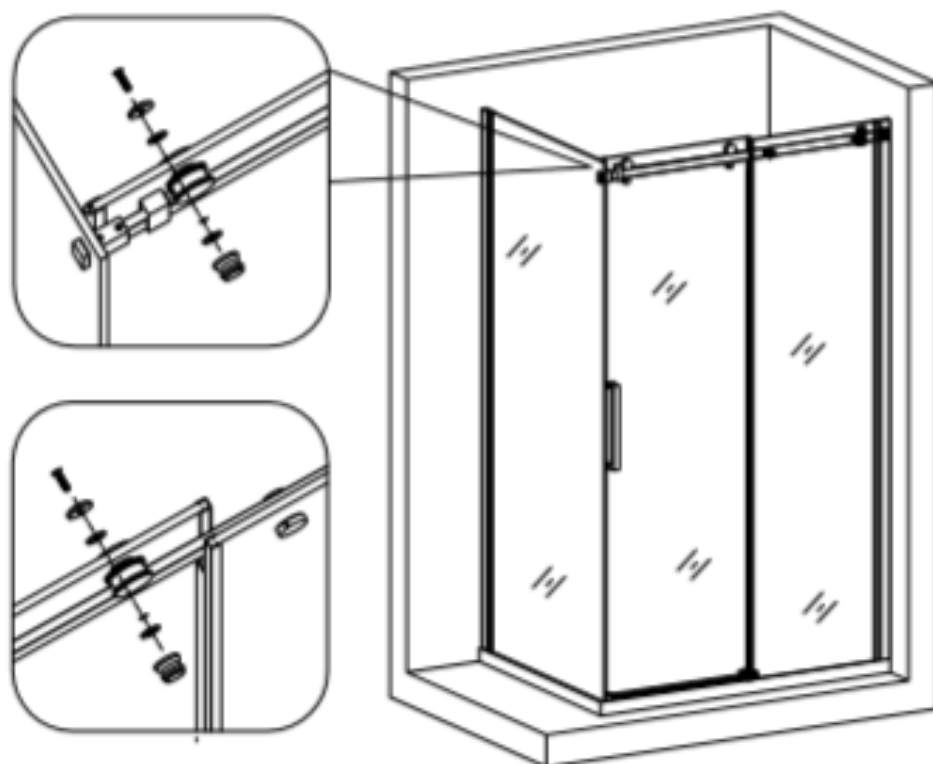


Fig 14

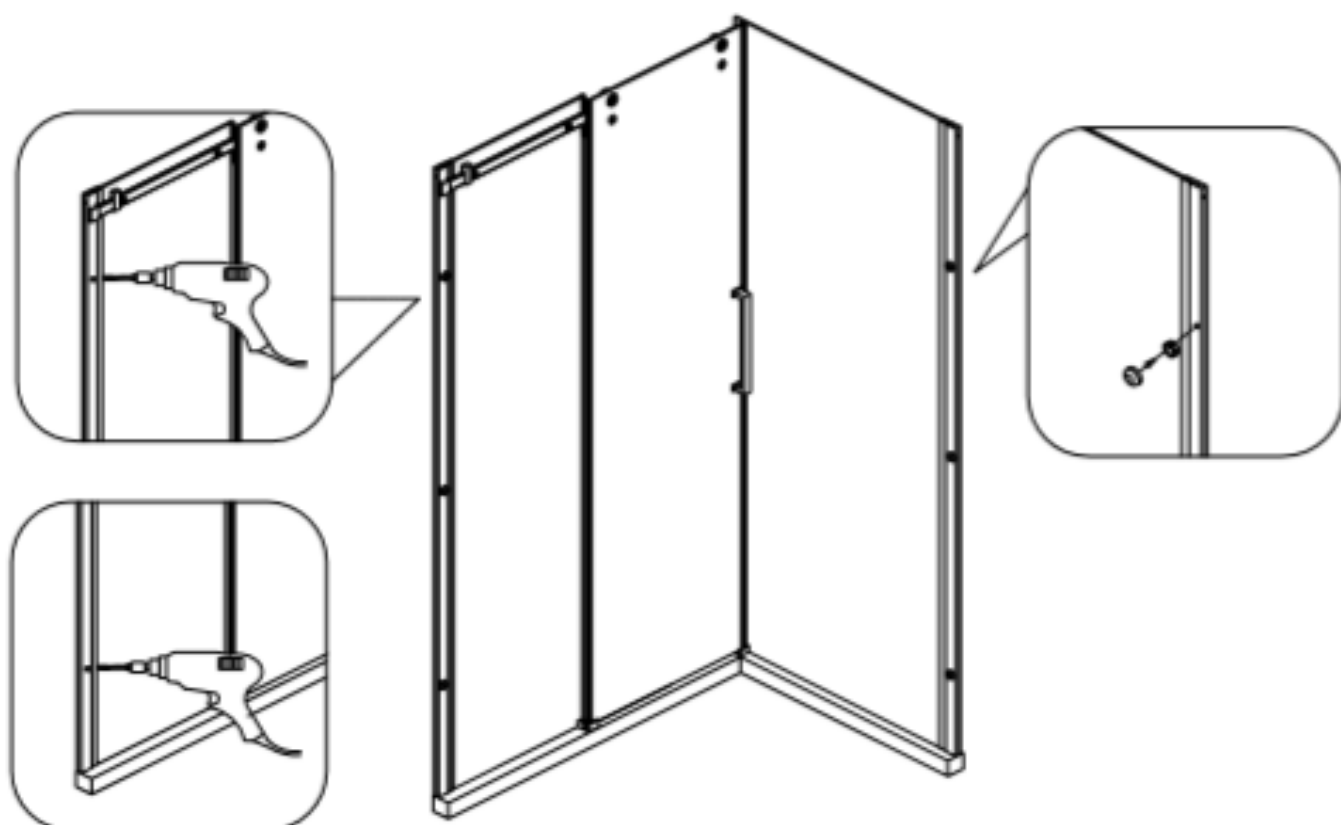


Fig 15

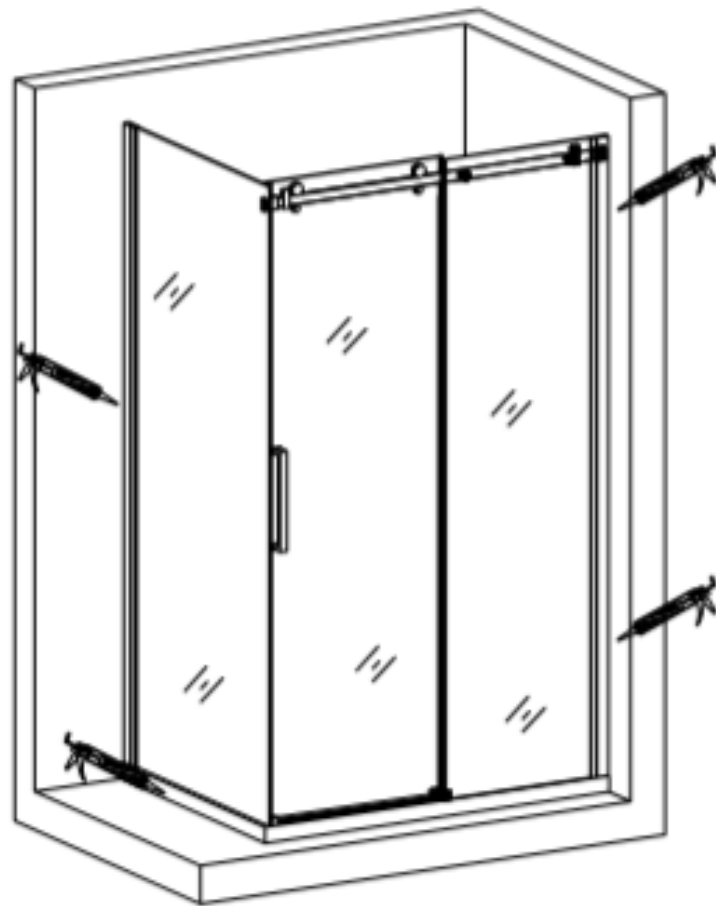


Fig 16