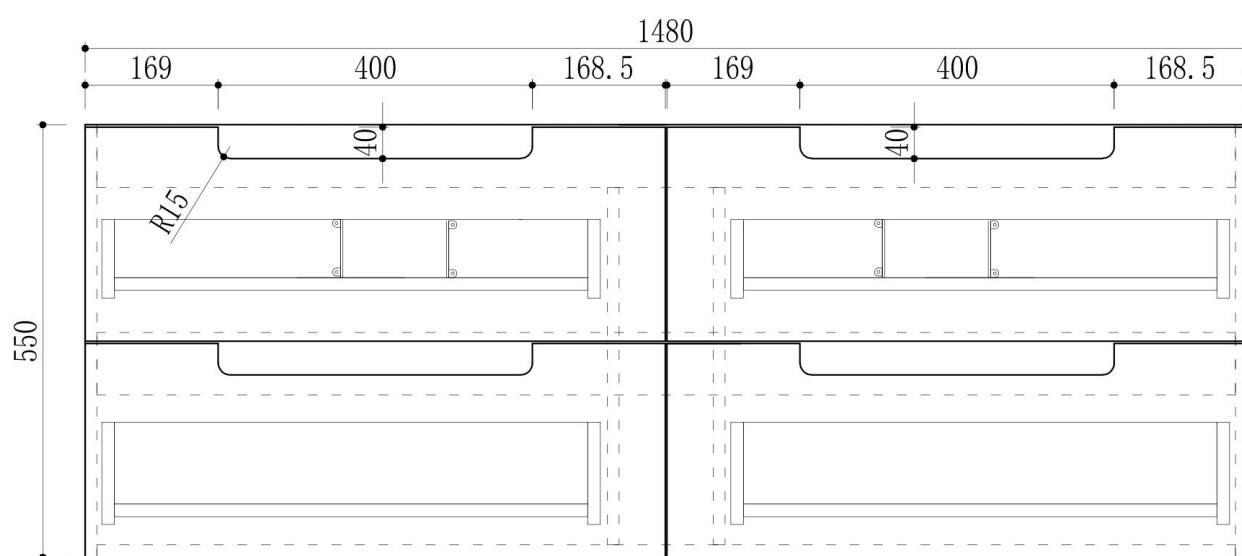


Diamond Collection

LOVINA TIER WALL HUNG

Code: CAWH55-1500



Features:

- Stacked drawers: Versatile and spacious
- Wave groove in thermo laminate Harvest Oak colour finish
- Hettich Quadro S full extension, soft close drawer runners
- Drawer organisers included
- Minimalist L-rail design finger pull drawers
- Premium graphite interior

