

# Dolce II

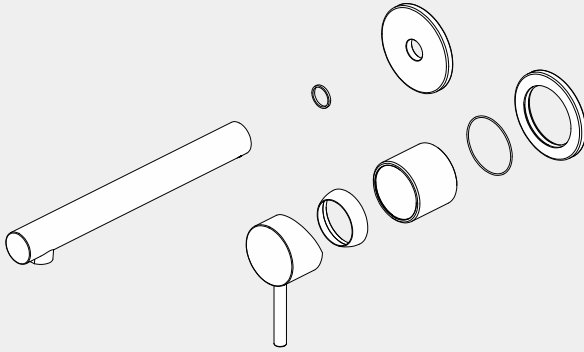
## Wall Basin/Bath Mixer

Separate Back Plate  
Trim Kits Only

# Nero



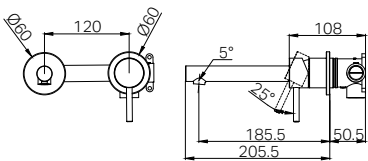
Lead Free



Version : 202509



### Drawing








### Specifications

**Watermark License**  
WM-060073  
**Temperature Rating**  
Min 1 °C - Max 75 °C  
**Pressure Rating**  
Min 150kpa - Max 500kpa

### Packing Includes

- 1 x Handle
- 1 x Dressing Ring
- 1 x Cartridge Bell
- 1 x Wall Plate For Handle
- 1 x Spout
- 1 x Wall Plate For Spout
- 1 x Extra Aerator(Without Flow Restrictor)

### Finish & SKU

- |   |   |  |
|---|---|--|
|  <b>Chrome</b><br>25B009CH       |  <b>Matte Black</b><br>25B009MB    |  <b>Gun Metal</b><br>25B009GM |
|  <b>Brushed Gold</b><br>25B009BG |  <b>Brushed Nickel</b><br>25B009BN |  |

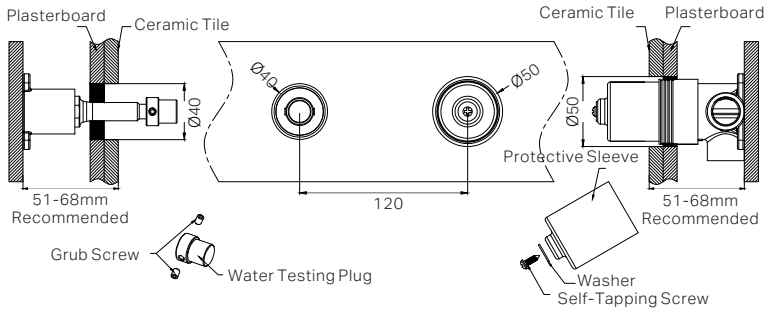
\*Dimensions are nominal measurements only.

## INSTALLATION INSTRUCTIONS

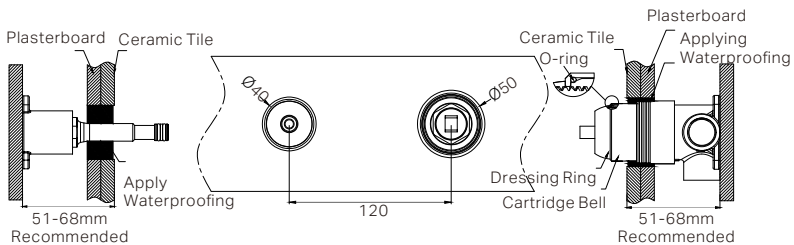
### GENERAL INSTRUCTIONS:

- This product must be installed by a licensed plumber. Ensure that your plumbing installation conforms to the Australian/New Zealand Standard AS/NZS 3500.
- All pipework must be thoroughly flushed prior to the installation of the mixer. In-line filters must be fitted on both hot and cold supplies to prevent foreign particles from damaging the ceramic cartridge.
- All outlets used primarily for personal hygiene must deliver water at a safe temperature in accordance with regional regulations.

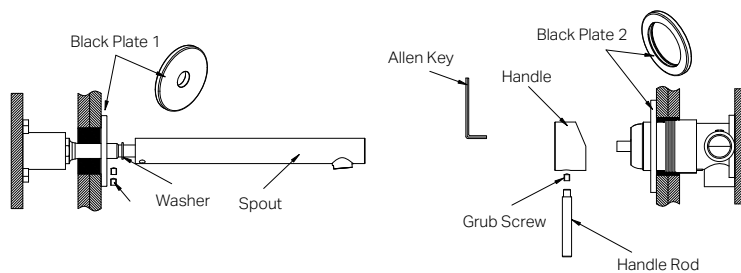
### INSTALLATION STEPS FOR TRIM KITS



1. Drill a  $\varnothing 50\text{mm}$  and a  $\varnothing 40\text{mm}$  hole in the ceramic tile, then position it as shown in the above diagram.
2. Undo the self-tapping screw to remove the protective sleeve, and release the grub screws to remove the water testing plug.



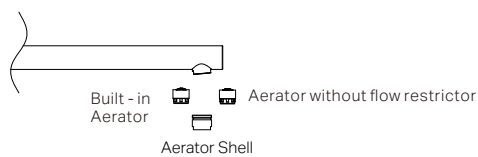
3. Slide the cartridge bell onto the body and insert the O-ring to the groove of the cartridge bell.
4. Apply waterproof treatment to the area in the diagram above.
5. Tighten the dressing ring onto the cartridge bell.



6. Slide the back plates and washer onto the wall, set the spout in place, and secure it tightly using the grub screws.

7. Insert the handle onto the cartridge stem, unscrew the handle rod, and use a allen key to tighten the grub screw to secure the handle. Then, screw the handle rod back in place.

## REPLACING THE AERATOR



### Note:

The built-in aerator is equipped with an internal flow restrictor, while the extra aerator included in the box does not have one. You can switch them based on your needs.

# Nero

