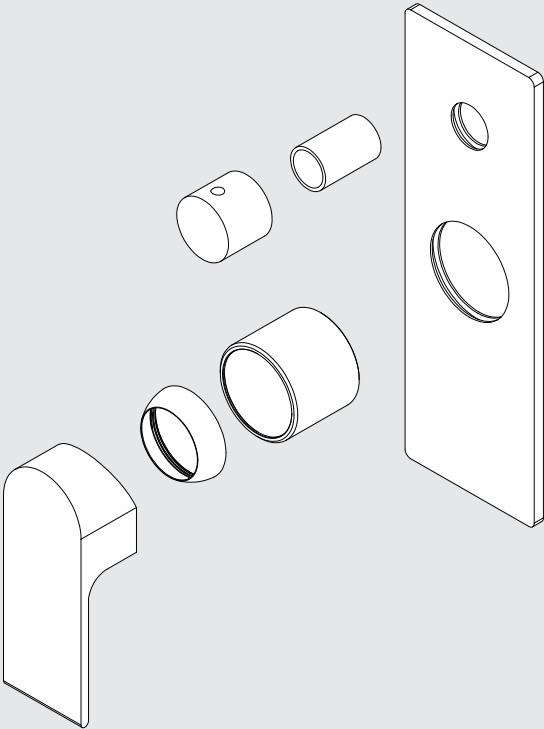


Bianca Shower Mixer With Divertor Trim Kits Only

Nero

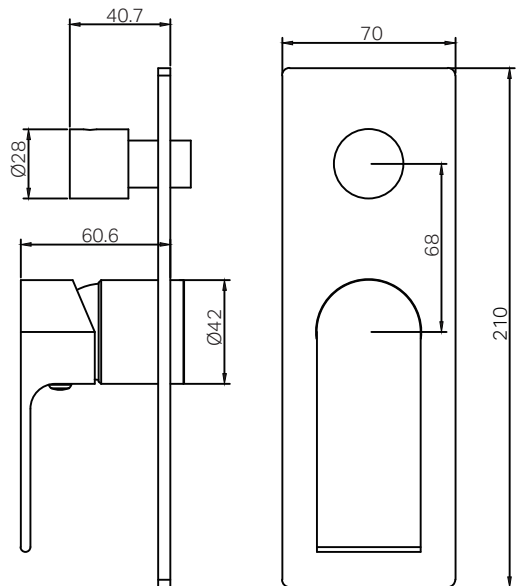


Lead Free



Versions:202506

Drawing






Specifications

Watermark License
WM-060073
Temperature Rating
Min 1°C-Max 75°C
Pressure Rating
Min 150kpa - Max 500kpa

Packaging Includes

- 1x Plate
- 1x Handle
- 1x Divertor Knob
- 1x Divertor Sleeve
- 1x Cartridge Bell
- 1x Dressing Ring
- 1x Installation Kits

Finish & SKU

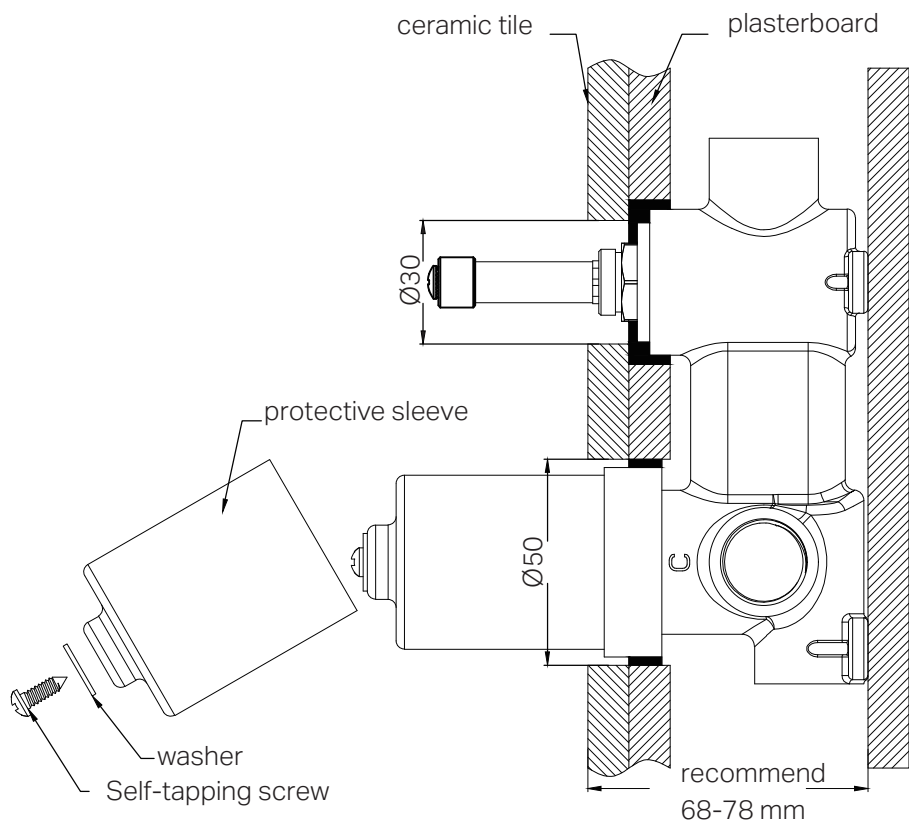
- | | | |
|---|--|--|
|  Chrome
NR321511atCH |  Gun Metal
NR321511atGM |  Brushed Nickel
NR321511atBN |
|  Matte Black
NR321511atMB |  Brushed Gold
NR321511atBG |  Brushed Bronze
NR321511atBZ |

*Dimensions are nominal measurements only.

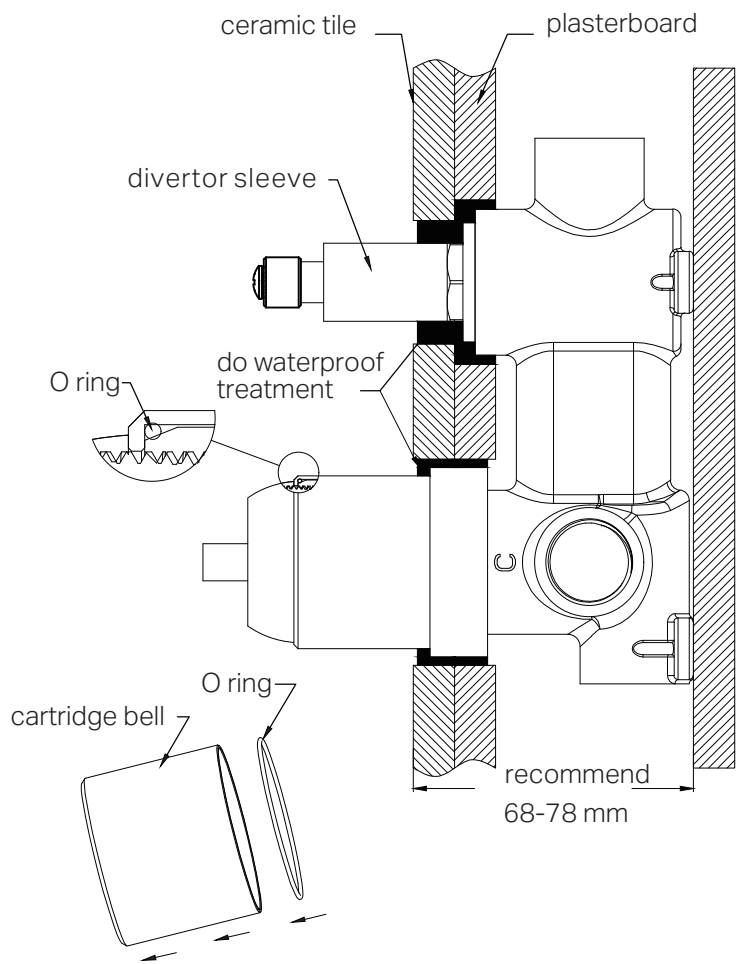
Installation Instruction

GENERAL INSTRUCTIONS:

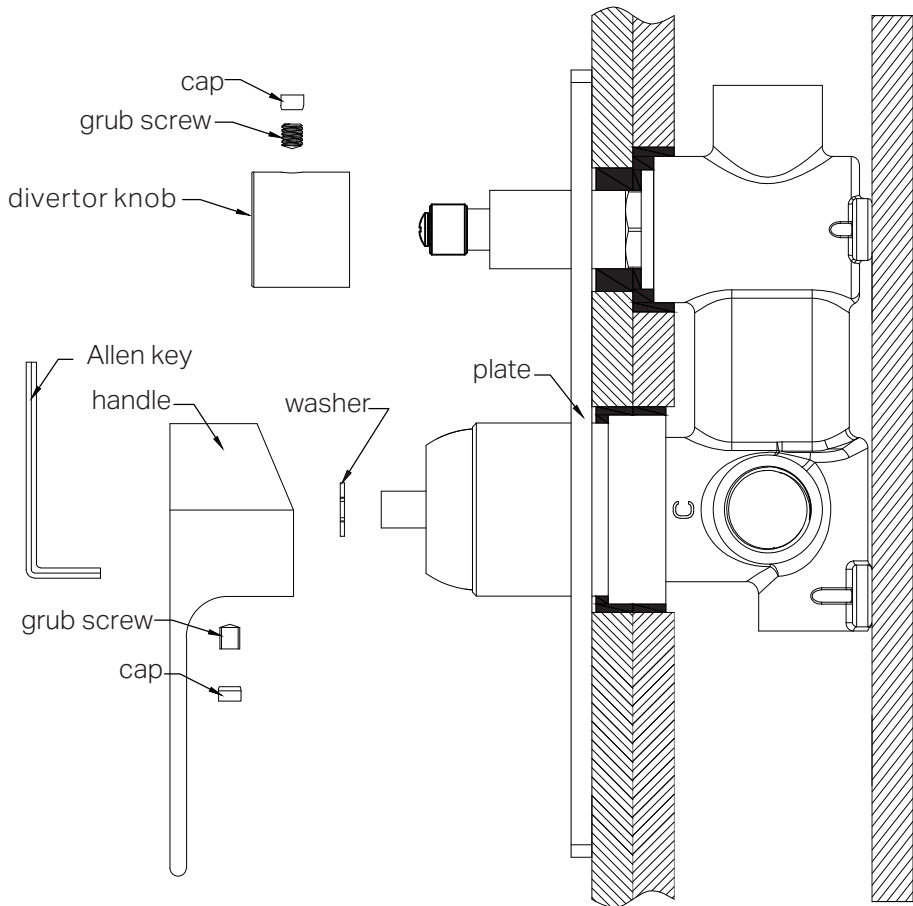
- This product must be installed by a licensed plumber. Ensure that your plumbing installation conforms to the Australian/New Zealand Standard AS/NZS 3500.
- All pipework must be thoroughly flushed prior to the installation of the mixer. In-line filters must be fitted on both hot and cold supplies to prevent foreign particles from damaging the ceramic cartridge.
- All outlets used primarily for personal hygiene must deliver water at a safe temperature in accordance with regional regulations.



1. Drill a Ø50mm and a Ø30mm hole in the ceramic tile, then position it as shown in the above diagram.
2. Undo the self-tapping screw to remove the protective sleeve .



3. Insert the O ring to the Cartridge Bell groove, and slide the Cartridge bell onto cartridge and slide divertor sleeve onto divertor cartridge.
4. Apply waterproof treatment to the area indicated in the diagram above.
5. Thread the dressing cap on the cartridge bell.



6. Slide the backplate onto body.
7. Attach the washer to cartridge rod, position the handle, Thread it with a grub screw using an Allen key, and cap the grub screw hole.
8. Attach the divertor knob to divertor cartridge, Thread it with grub screw using Allen key, and cap the grub screw hole.

MAINTENANCE AND CARE:

- Regularly check the mixer and connections for signs of wear or leaks.
- Clean the tap with mild soapy water to maintain its appearance, avoiding harsh chemicals and abrasive materials that may damage the finish.

FINAL INSPECTION:

- Ensure the tap operates smoothly and that there are no leaks at the connections.
- Clean the area and the newly installed tap with a soft cloth to remove any installation residues.

Nero

