

# Mecca

## Wall Basin/Bath Mixer

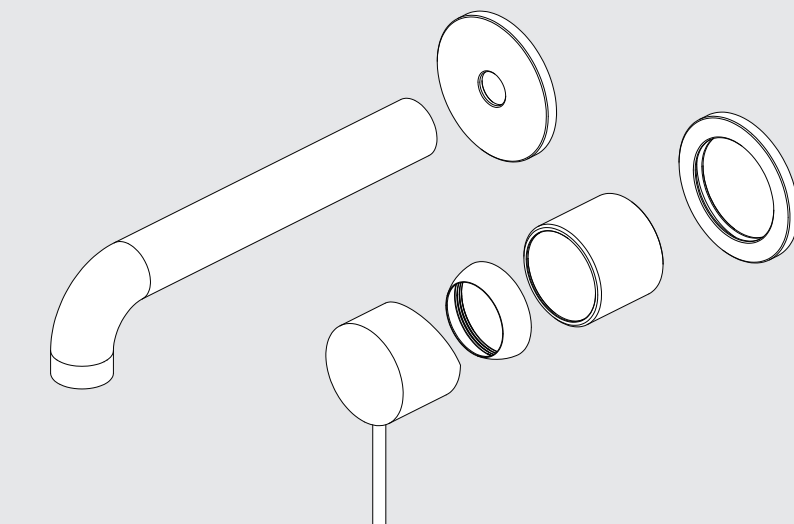
### Separate Back Plate

### Trim Kits Only



Lead Free

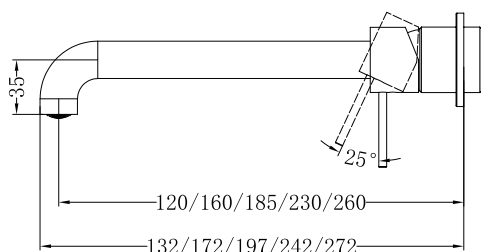
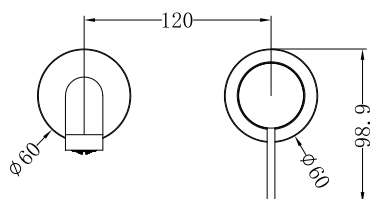
# Nero



Versions:202506



#### Drawing



#### Specifications

##### Watermark License

WM-060073

##### Temperature Rating

Min 1°C-Max 75°C

##### Pressure Rating

Min 150kpa - Max 500kpa

#### Packaging Includes

- 1x Spout
- 2x Plates
- 1x Handle
- 1x Cartridge Bell
- 1x Dressing Ring
- 1x Non-Restricting Aerator

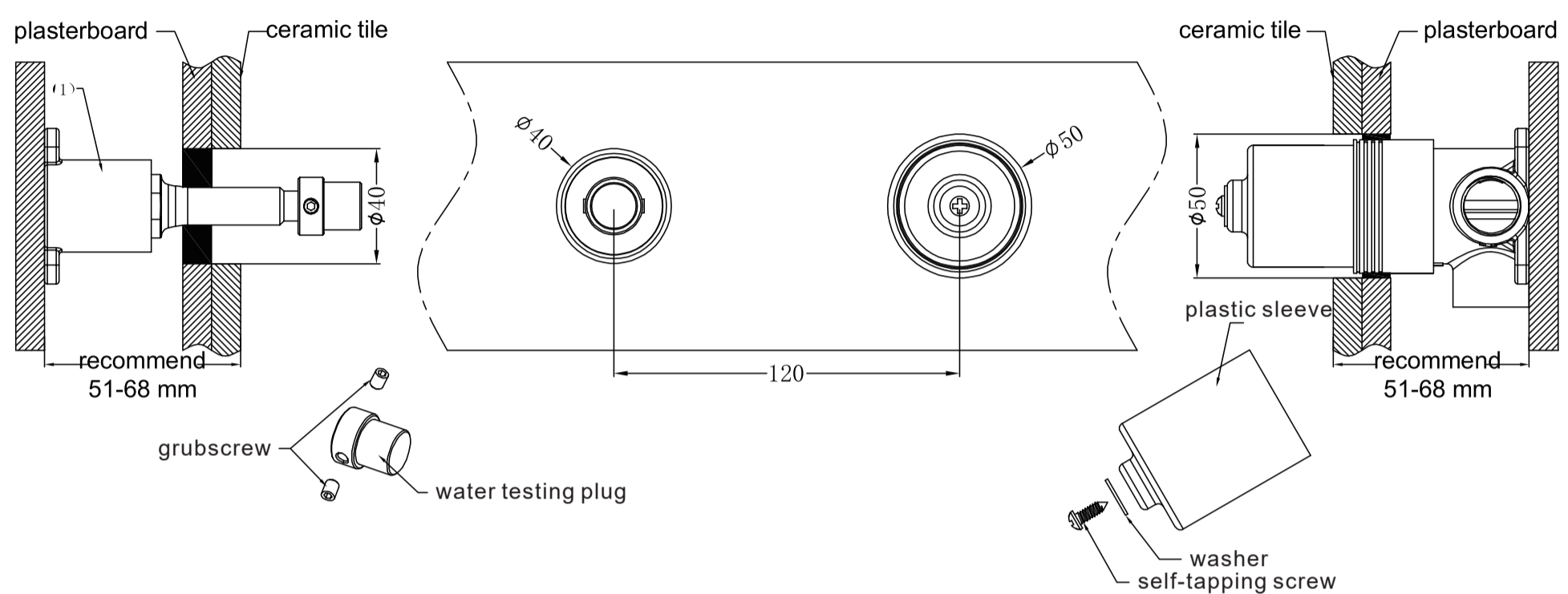
#### Finish & SKU

- |  |   |
|--|---|
| <ul style="list-style-type: none"> <li>Chrome<br/>NR221910c(120/160/185/230/260)tCH</li> <li>Matte Black<br/>NR221910c(120/160/185/230/260)tMB</li> <li>Brushed Bronze<br/>NR221910c(120/160/185/230/260)tBZ</li> <li>Matte White<br/>NR221910c(120/160/185/230/260)tMW</li> </ul> | <ul style="list-style-type: none"> <li>Gun Metal<br/>NR221910c(120/160/185/230/260)tGM</li> <li>Brushed Gold<br/>NR221910c(120/160/185/230/260)tBG</li> <li>Brushed Nickel<br/>NR221910c(120/160/185/230/260)tBN</li> </ul> |
|--|---|

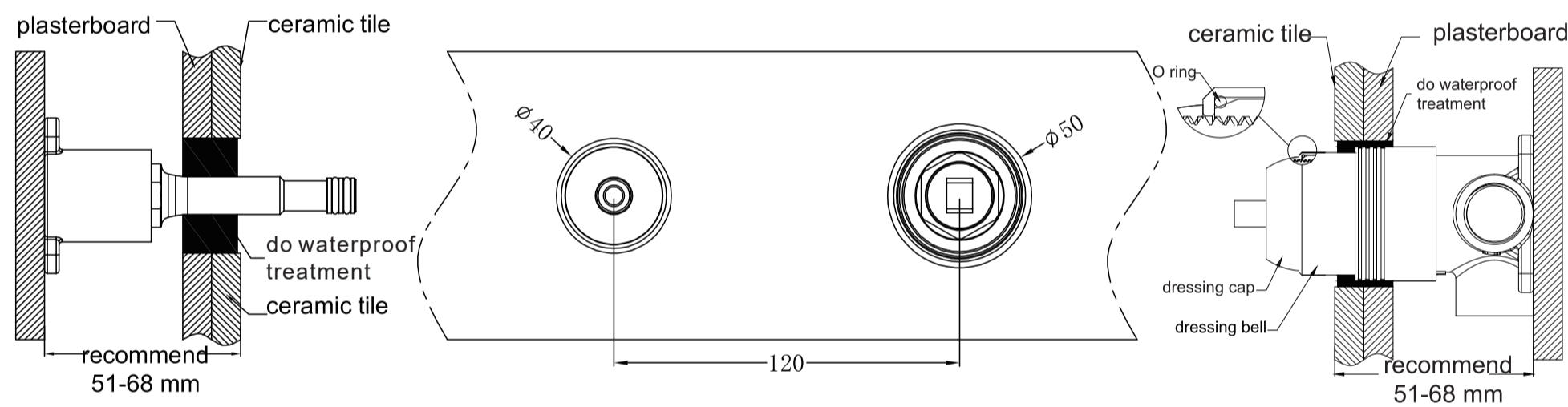
\*Dimensions are nominal measurements only

\*\*Includes an additional non-restricting aerator for bath use

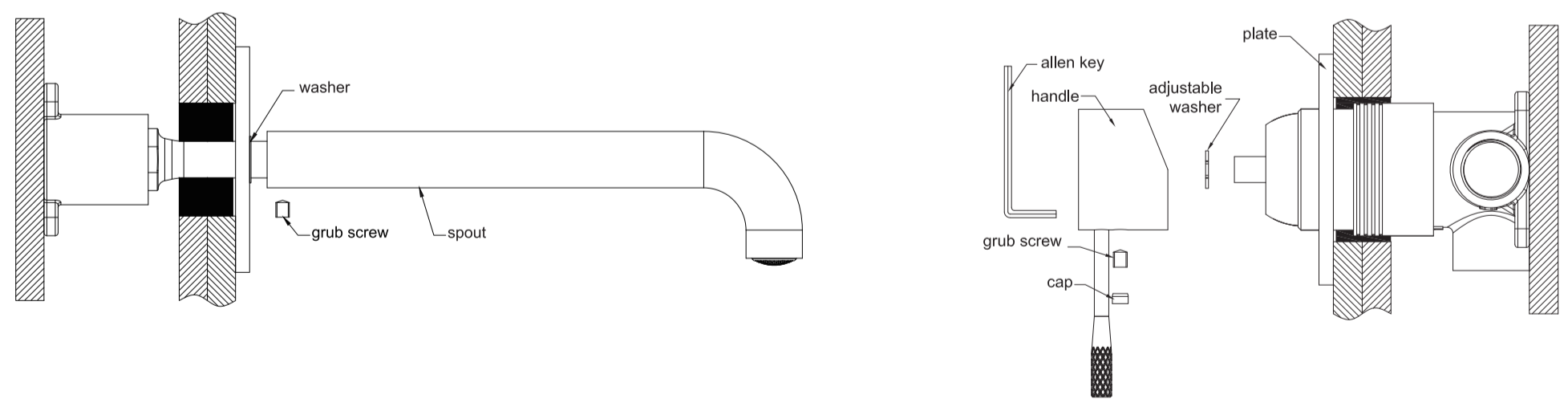
# Installation Instruction For Trim Kits Only



- 1. Drill a Ø50mm and a Ø40mm hole in the ceramic tile, then position it as shown in the above diagram.
- 2. Undo the self-taping screw to remove the plastic sleeve, and release the grub screws to remove the water testing plug.



- 3. Insert the O ring to the dressing bell groove, and slide the dressing bell onto cartridge.
- 4. Apply waterproof treatment to the area indicated in the diagram above.
- 5. Tighten up the dressing ring on the cartridge bell.



- 6. Slide the backplates and washer onto the wall, set the spout in place, and secure it tightly using the grub screw.
- 7. Attach the washer to the cartridge rod, position the handle, tighten it with a grub screw using an Allen key, and cap the grub screw hole.

Please note: there is a washer between backplate and the spout.

Nero

