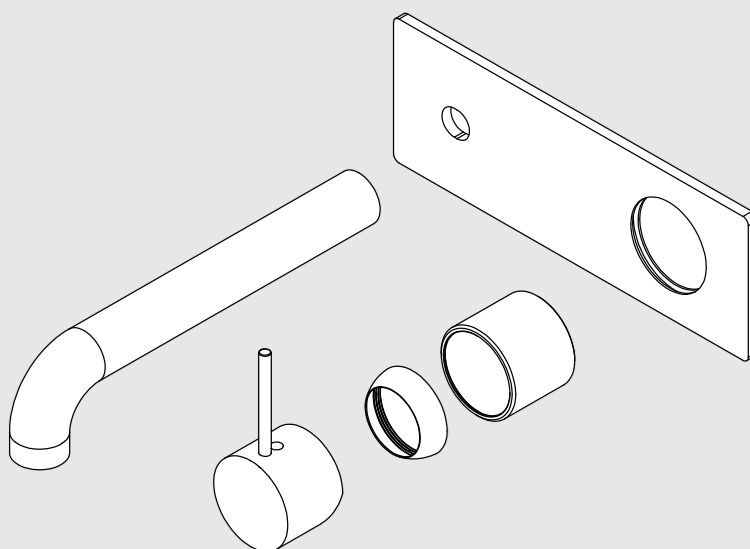


Mecca Wall Basin/Bath Mixer Handle Up Trim Kits Only

Nero



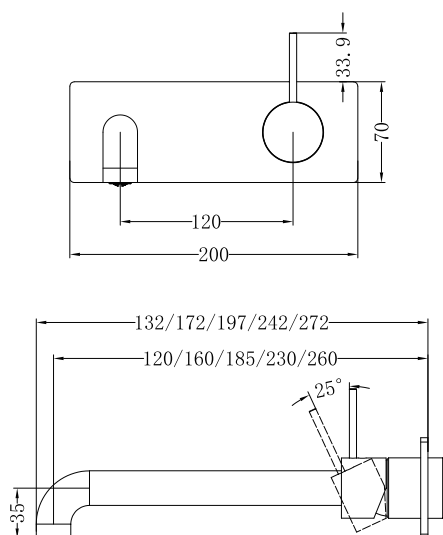
Lead Free



Versions:202506



Drawing



Specifications

Watermark License

WM-060073

Temperature Rating

Min 1°C-Max 75°C

Pressure Rating

Min 150kpa - Max 500kpa

Packaging Includes

- 1x Spout
- 1x Plate
- 1x Handle
- 1x Cartridge Bell
- 1x Dressing Ring
- 1x Non-Restricting Aerator

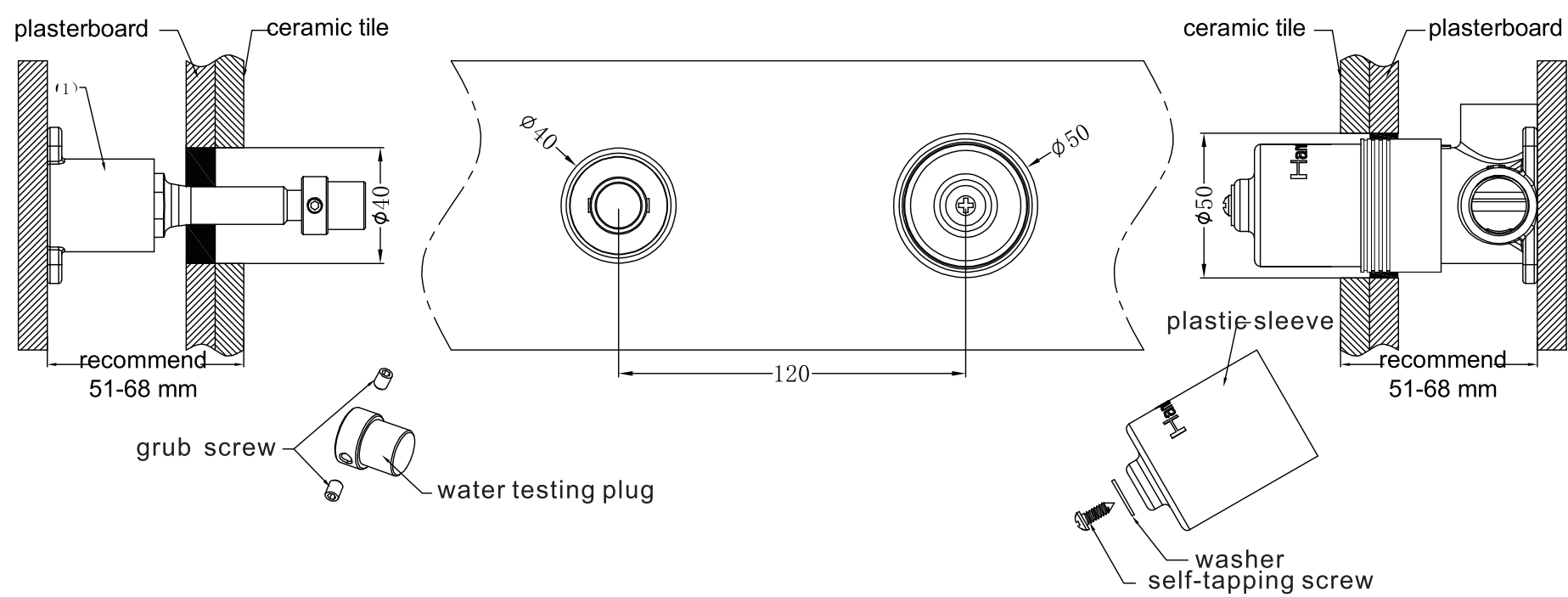
Finish & SKU

- | | |
|--|---|
| <ul style="list-style-type: none"> Chrome
NR221910b(120/160/185/230/260)tCH Matte Black
NR221910b(120/160/185/230/260)tMB Brushed Bronze
NR221910b(120/160/185/230/260)tBZ Matte White
NR221910b(120/160/185/230/260)tMW | <ul style="list-style-type: none"> Gun Metal
NR221910b(120/160/185/230/260)tGM Brushed Gold
NR221910b(120/160/185/230/260)tBG Brushed Nickel
NR221910b(120/160/185/230/260)tBN |
|--|---|

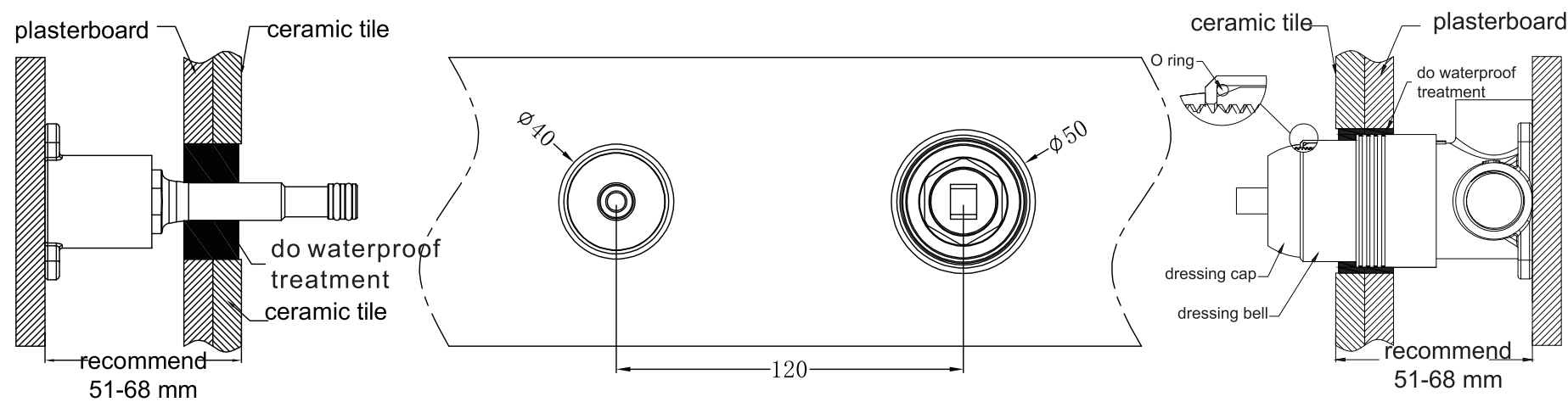
*Dimensions are nominal measurements only

**Includes an additional non-restricting aerator for bath use

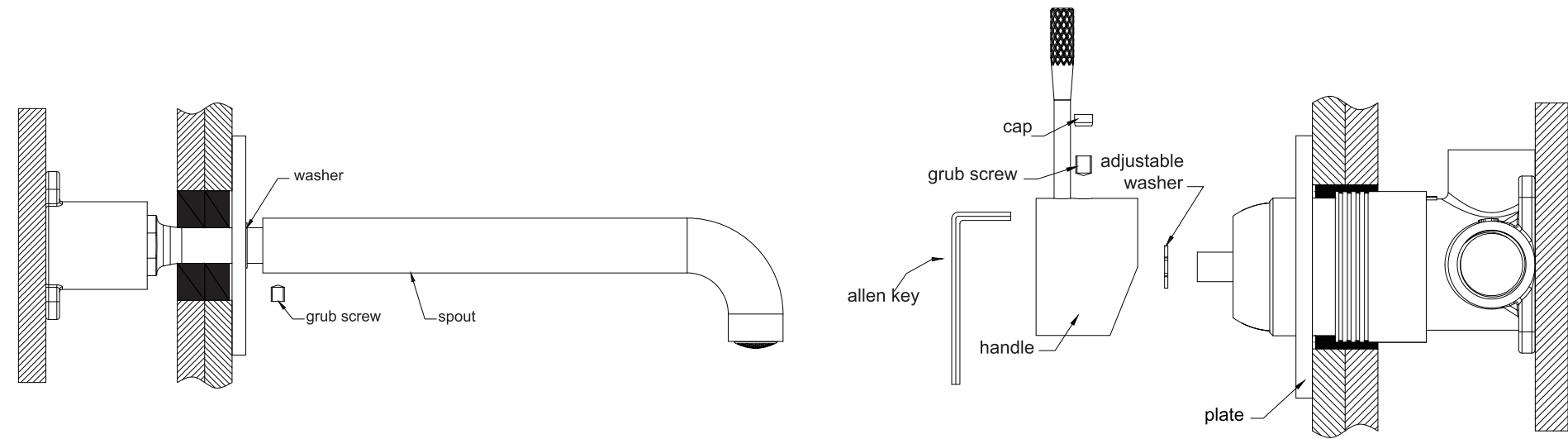
Installation Instruction For Trim Kits Only



- 1. Drill a Ø50mm and a Ø40mm hole in the ceramic tile, then position it as shown in the above diagram.
- 2. Undo the self-taping screw to remove the plastic sleeve, and release the grub screws to remove the water testing.



- 3. Insert the O ring to the dressing bell groove, and slide the dressing bell onto cartridge.
- 4. Apply waterproof treatment to the area indicated in the diagram above.
- 5. Tighten up the dressing ring on the cartridge bell.



- 6. Slide the backplate and washer onto the wall, set the spout in place, and secure it tightly using the grub screw.
- 7. Attach the washer to the cartridge rod, position the handle, tighten it with a grub screw using an Allen key, and cap the grub screw hole.

Please note: there is a washer between backplate and the spout.

Nero

