

**Bolted Connectors & Terminals**

**Easitap - Tee Off Connectors**

Type V

Type V-ET

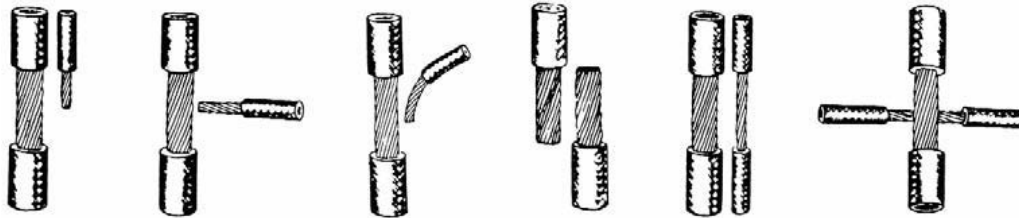


An extremely versatile three-piece connector for all combinations of mains and tee off conductors. Typical connections include: Parallel tap; Tee connections; Cross connections and End-to-end connections.

**Materials:** Current carrying centre plate and outer planes are high strength copper alloy, Type V-ET are electro tinned.

**Hardware:** Stainless steel  
All edges rounded for easy insertion of conductor.

**Typical Connections**



Type V Cat. No.	Type VET Cat. No.	Fig. No.	Metric Conductor Range								Dimensions mm			
			Run				Tap							
			Area mm <sup>2</sup>		O.D.		Area mm <sup>2</sup>		O.D.		B	H	J	W
			Min.	Max.	Min.	Max.	Min.	Max.	Min.	Max.				
V1B	VET1	1	16	35	5.10	7.65	16	35	5.1	7.65	35	40	8	37
V2B	VET2	1	50	95	8.90	12.60	16	35	5.1	7.65	37	49	8	41
V3B	VET3	1	50	95	8.90	12.60	50	95	8.9	12.46	46	56	10	46
V4B	VET4	1	120	240	14.21	20.25	16	35	5.1	7.65	37	56	8	49
V5B	VET5	1	120	240	14.21	20.25	50	95	8.9	12.46	43	57	10	46
V6B	VET6	2	120	240	14.21	20.25	120	240	14.21	20.25	52	70	10	52
V7B	VET7	1	240	500	20.25	28.80	16	35	5.1	7.65	37	62	8	59
V8B	VET8	1	240	500	20.25	28.80	50	95	8.9	12.46	46	73	10	62
V9B	VET9	2	240	500	20.25	28.80	120	240	14.21	20.25	52	78	10	62
V10B	VET10	2	240	500	20.25	28.80	240	500	20.25	28.80	62	87	10	62

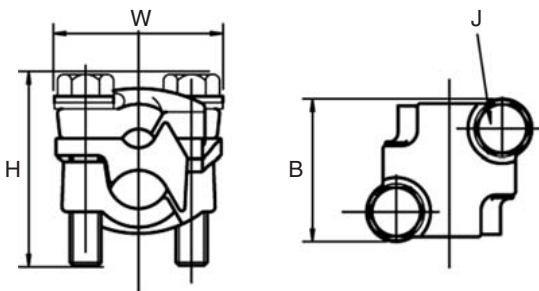


Fig. 1

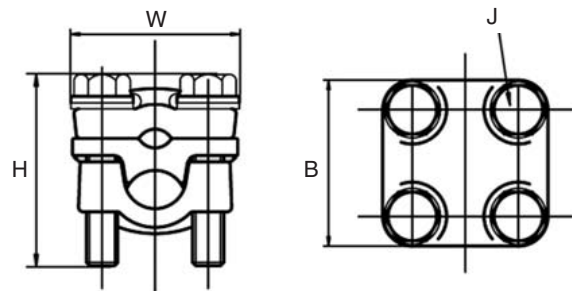


Fig. 2