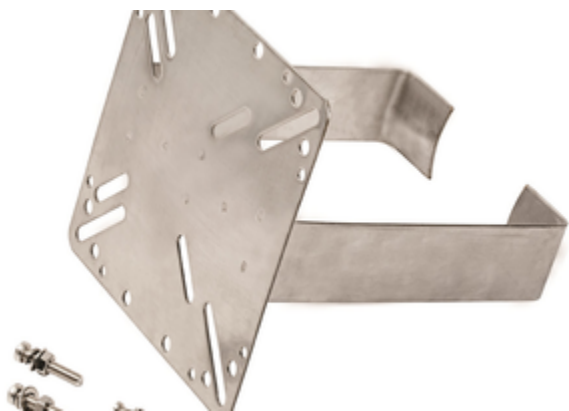


SUPPORT BRACKET



nVent RAYCHEM SB-XXX and JB-SB-26 are a range of stainless steel support brackets used to fix equipment such as thermostats or junction boxes on pipes or cable trays. The range allows different mounting positions, various junction box and thermostat sizes and protects the heating cable or sensor cable when exiting the insulation cladding. They include a set of M6 and/or M4 fixing screws, nuts, washers and spring lock washers for the fixation of one junction box or thermostat.

FEATURES & BENEFITS

Simple and fast to install

Different models, tailored to each application

Includes fixing screws and washer to fix junction box or thermostat

Passivated stainless steel 304 for high corrosion resistance

SPECIFICATIONS

Table 1/1

Item Name	Max Pipe Temperature	Height	Plate Width	Plate Length
SB-100	230 °C	100 mm	160 mm	230 mm
SB-101	230 °C	160 mm	160 mm	160 mm
SB-110	230 °C	100 mm	130 mm	130 mm
SB-120	230 °C	120 mm	120 mm	220 mm
SB-111	230 °C	100 mm	130 mm	130 mm

Material SS304

PROUDLY DISTRIBUTED BY



Web www.gvk.com.au
Email sales@gvk.com.au
Phone 03 9312 6633
Fax 03 9312 6433

PROUDLY DISTRIBUTED BY



PTY
LTD

Web	www.gvk.com.au
Email	sales@gvk.com.au
Phone	03 9312 6633
Fax	03 9312 6433



Our powerful portfolio of brands:
CADDY ERICO HOFFMAN RAYCHEM SCHROFF TRACER

© 2021 nVent. All nVent marks and logos are owned or licensed by nVent Services GmbH or its affiliates. All other trademarks are the property of their respective owners.

nVent reserves the right to change specifications without notice.