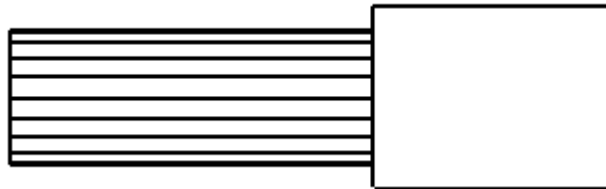


Installation Instructions for Single-Core Re-Usable Pulling Eyes

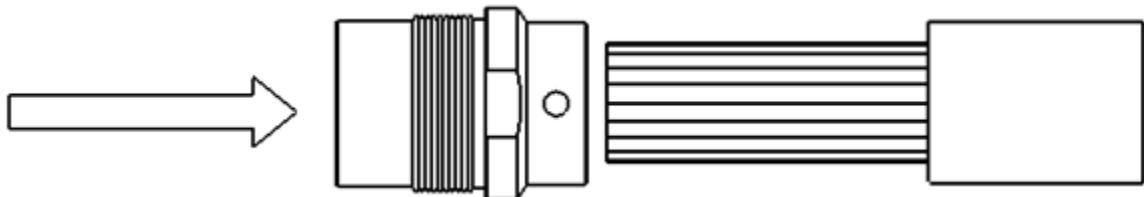
1. Select a Re-usable pulling eye suitable for the outside diameter of the cable conductor (see Cable data sheet).
Example:
If your cable conductor is 240mm² (this equals a diameter of 18mm). Your required pulling eye is **RPE-1520**.

RPE-5055
Lower Limit Conductor Range (mm) —
Upper Limit Conductor Range (mm) —

2. Remove all cable sheathing, exposing the conductor. A length equivalent to the length of the base nut plus 20mm is required. Be careful not to cut the conductor as this will create a breaking point during pulling.



3. Place the threaded base nut over the exposed conductor. Firmly tighten all the grub screws with the provided Allen key

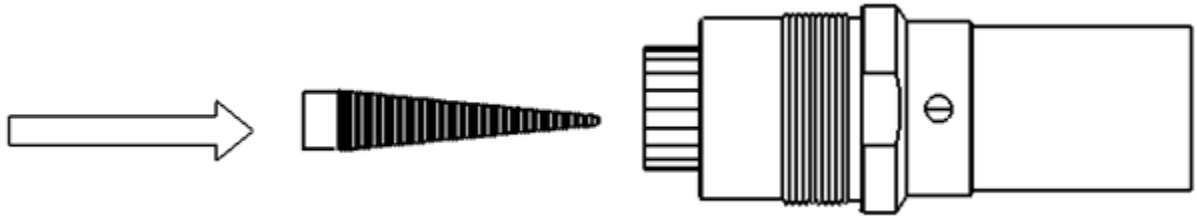


Torque settings for grub screws are not provided, testing and certification for the pulling eye to your specified cable is offered at an additional cost.

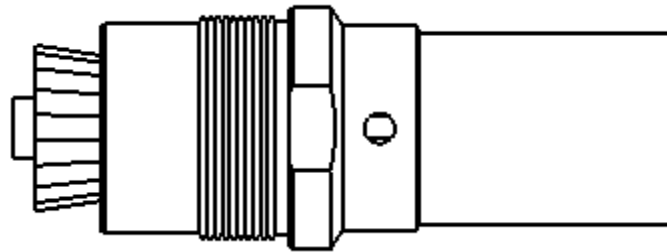
There are 2 'cone point' grub screws securing each conductor onto the RPE

PROUDLY DISTRIBUTED BY

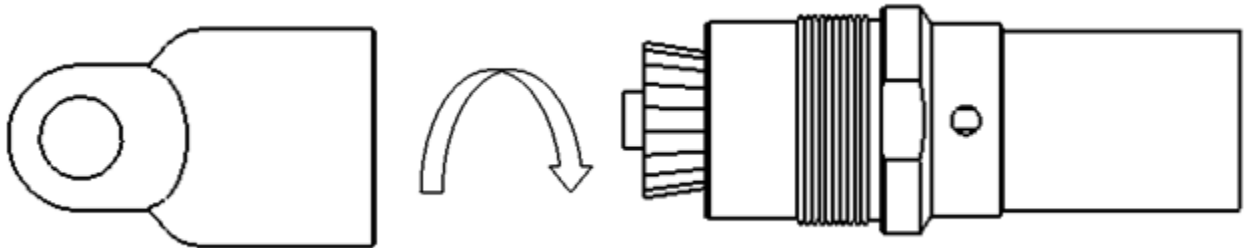
4. Insert the conical wedge into the centre of the conductor. With a hammer, drive the conical wedge into the conductor until it will advance no further.



5. The flared conductor wires must not protrude past the base nut as this will prevent the head from threading on. If the conductor wires protrude past the base nut, tap or trim the protruding wires until all wires don't lie outside the threaded area.



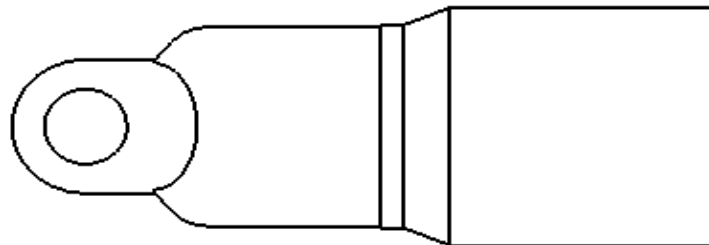
6. Screw the head onto the base nut and tighten with a wrench on the flats provided.



Pulling eye and cable sealing

To seal the pulling eye and cable from ingress of water, mud and/or debris a metal sleeve is an optional feature. The ordered sleeve ID should be 2-3mm larger than the size of the outer sheath.

This welded sleeve will then be crimped with the appropriate crimping tools.



PROUDLY DISTRIBUTED BY

GVKinsman PTY
ELECTRICAL DISTRIBUTOR LTD

Web www.gvk.com.au
Email sales@gvk.com.au
Phone 03 9312 6633
Fax 03 9312 6433