



Quick Reference Guide

KRONE Fuse Switch Disconnects and Outdoor Connectors

PROUDLY DISTRIBUTED BY

GVKinsman
ELECTRICAL DISTRIBUTOR PTY LTD

Web www.gvk.com.au
Email sales@gvk.com.au
Phone 03 9312 6633
Fax 03 9312 6433

TE ENERGY
connectivity

Contents

KGH Series Fuse Switch Disconnectors

KGH250	Fuse Switch Disconnectors 250A	3
KGH400	Fuse Switch Disconnectors 400A	5

Type OCK Outdoor Connector

KGH-NBLOCK	Outdoor Connector (Neutral)	7
-------------------	-----------------------------	---

KGH250

250A

Features

- Extremely compact
- One or three-pole units
- On-load switching capability
- Corrosion proof
- Fully insulated
- Suits standard hook-stick
- Individual, hinged terminal covers for maximum safety

The KRONE KGH250 Switch

The upper housing holds the conductor, terminals and contacts.

The lower housing is hinged for easy opening and closing.

It houses the mounting for size 1-2 fuses, links or short circuiting facilities.

Switches are available in single or triple pole versions.

The triple pole switch is supplied with mounting bracket.

Cable Termination

The KGH250 is available terminals;

- Pillar type terminals for stripped copper and aluminium compacted cables ranging from 25-185mm²

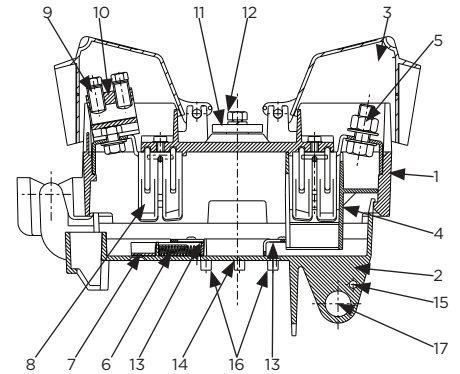
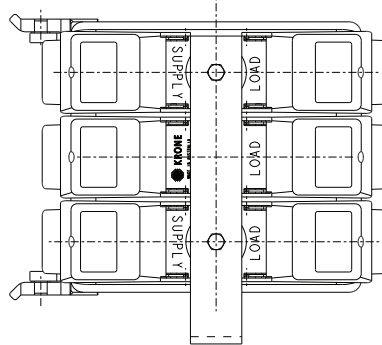
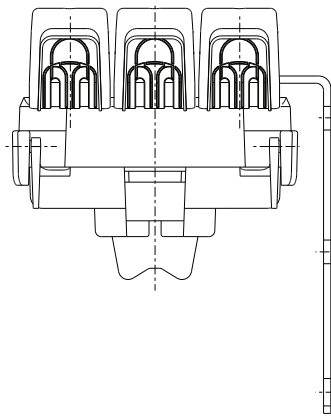


*Pillar
Type
Terminal*



Catalogue Reference	No of Poles	Ganged Switching	Pillar 2x25-185mm ² Al & Cu cables
KGH250	3	yes	in/out

Cross Section KGH250



Technical Data

In accordance with tests and requirements to IEC 947-3 and AS2847-3

	KGH250
Rated operational voltage, U _e	450V
Rated insulation voltage, U _i	1000V
Rated frequency	50-60Hz
Rated impulse withstand voltage, U _{imp}	16kV
Rated operational current, I _e	
- with fuse links	250A
- with connecting-links	250A
Rated make-break current at 0.65pg	375A
Rated short-time withstand current I _{cw} for one second	
- with connecting links	25kA
Rated short-circuit making capacity I _{cm}	
- with connecting links	10kA
Rated conditional short-circuit current	
- with fuse-links	50kA
Utilisation category	AC 22 B
Infrequent operation with current	200
Infrequent operation without current	1400
Degree of protection	IP2L4
Mass (without fuse)	6.5kg

1. Upper housing
2. Hinged removable lower housing
3. Hinged terminal cover
4. Arc chute
5. Stainless steel 12mm bolted lug type terminal (option)
6. Fuse-link retaining clip
7. Yellow indicator fuse-link/ connecting-link installed
8. Nickel plated copper alloy contact
11. Switch mounting bracket
12. Switch mounting screw
13. Voltage test points
14. Neon indicator (option)
15. Rod actuating pin (optional)
16. Connecting-link storage position (option)
17. Hook stick position for opening/ closing
18. Hook stick position for removal/ replacement of cover

KGH400

400A/630A

Features

- Extremely compact
- One or three-pole units
- On-load switching capability
- Corrosion proof
- Fully insulated
- Suits standard hook-stick
- Individual, hinged terminal covers for maximum safety

The KRONE KGH400 Switch

The upper housing holds the conductor, terminals and contacts.

The lower housing is hinged for easy opening and closing.

It houses the mounting for size 1-2 fuses, links or short circuiting facilities.

Switches are available in single or triple pole versions.

The triple pole switch is supplied with mounting bracket.

Cable Termination

The KGH400 is available terminals;

- Pillar type terminals for stripped copper and aluminium compacted cables ranging from 25-185mm².

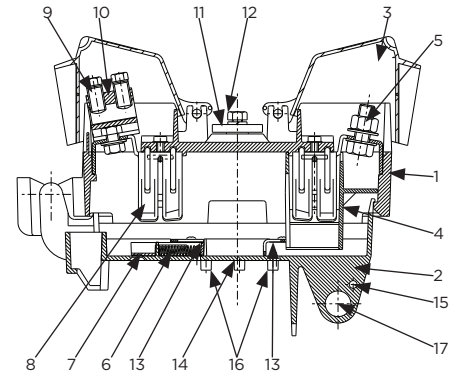
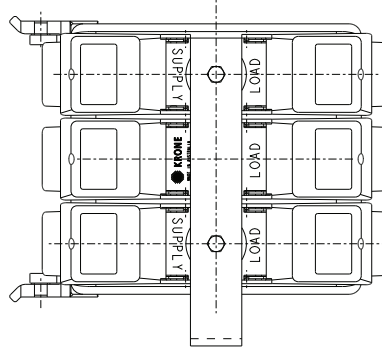
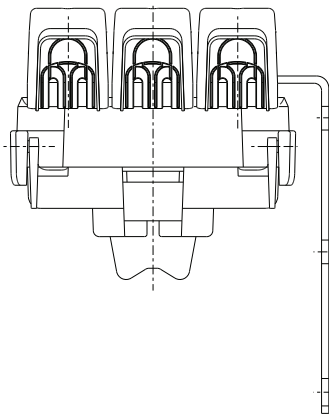


*Pillar
Type
Terminal*



Catalogue Reference	No of Poles	Ganged Switching	Pillar 2x25-185mm ² Al & Cu cables
KGH400	3	yes	in/out

Cross Section KGH400



Technical Data

In accordance with tests and requirements to IEC 947-3 and AS2847-3

	KGH400
Rated operational voltage, Ue	450V
Rated insulation voltage, Ui	1000V
Rated frequency	50-60Hz
Rated impulse withstand voltage, Uimp	16kV
Rated operational current, Ie	
- with fuse links	400A
- with connecting-links	630A
Rated make-break current at 0.65pg	945A
Rated short-time withstand current Icw for one second	
- with connecting links	25kA
Rated short-circuit making capacity Icm	
- with connecting links	10kA
Rated conditional short-circuit current	
- with fuse-links	50kA
Utilisation category	AC 22 B
Infrequent operation with current	200
Infrequent operation without current	1400
Degree of protection	IP2L4
Mass (without fuse)	6.5kg

1. Upper housing
2. Hinged removable lower housing
3. Hinged terminal cover
4. Arc chute
5. Stainless steel 12mm bolted lug type terminal (option)
6. Fuse-link retaining clip
7. Yellow indicator fuse-link/ connecting-link installed
8. Nickel plated copper alloy contact
11. Switch mounting bracket
12. Switch mounting screw
13. Voltage test points
14. Neon indicator (option)
15. Rod actuating pin (optional)
16. Connecting-link storage position (option)
17. Hook stick position for opening/ closing
18. Hook stick position for removal/ replacement of cover

KGH-NBLOCK

12kV

Features

- Re-usable connector
- Fully insulated
- IP24 protection
- UV resistant polyimide housing
- Corrosion proof
- Flexible easy mounting
- Test access
- Multiple cable connections
- Accepts cable 25-185mm² aluminium or copper

Mounting

The KGH-NBLOCK may be free hanging or secured to a mounting bracket (widths 40 and 24mm) using the cable tie provided.

Benefits

- Neutral cable connections
- Phase cable connections
- Access point for testing
- Connection point for earth leads
- Connection for different cable sizes



The KRONE Type KGH-NBLOCK

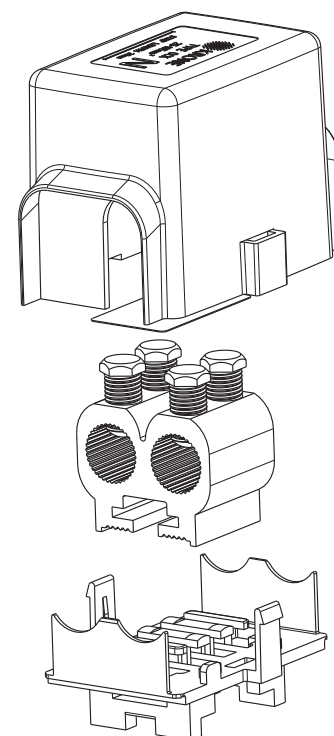
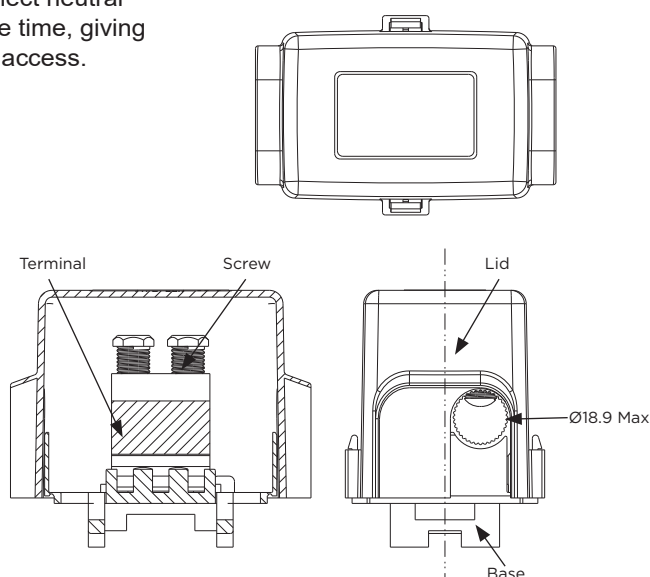
is an outdoor low voltage cable connector designed for use with KRONE's range of low voltage fuse switch disconnectors.

The KGH-NBLOCK solves the problem of how to connect neutral cables and, at the same time, giving easy voltage test point access.

Materials

Base/Lid: Polyamide (UV stabilised) black

Pillar Terminal: Aluminium alloy



P. NO:	Catalogue Reference	Pillar
		for 25 - 185mm ² Al/Cu
KGH-NBLOCK	OUTDR CON 2X25-185MMSQ TUNL	2 cables in / 2 cables out

Technical Data

Rated operational voltage, Ue	450V
Rated insulation voltage, Ui	1000V
Rated impulse withstand voltage, Uimp	12kV
Degree of protection	IP24