

Issue Date: 10/04/2012
Page: 1 of 2
File: PSS-K1501A1

15/25kV	200A Deadbreak Bushing Insert	K1501A1
---------	--------------------------------------	---------



Features:

- **15/25kV, 200 Amp Deadbreak Rated**
- **Fits standard Elastimold® bushing well**
- **Peroxide-cured insulation and jacket**

K1501A1 Deadbreak Bushing Insert

Applications:

The ELASTIMOLD® K1501A1 bushing insert is a fully-shielded, fully submersible separable insulated connector designed for de-energized operation. The K1501A1 is suitable for use on 15/25kV class systems and may be used as the bushing interface for connecting shielded cable to the following:

- Sub-surface/Pad mount transformers
- Generators
- Reclosers
- Regulators
- Switchgear

Designed for use as an apparatus bushing interface, the K1501A1 should be installed in an Elastimold® universal bushing well and mated with an appropriate Elastimold® product. The K1501A1 is designed to mate with the following Elastimold® products including:

- 156LR Elbow
- K150DR
- K151SR

Ratings:

Meets ANSI/IEEE Standard 386, Latest Revision

For 15kV Voltage Class:

8.3kV Max Phase-to-Ground – Operating Voltage
 14.4kV Max Phase-to-Phase
 95kV BIL – Impulse Withstand (1.2 x 50 microsecond wave)
 34kV AC – One minute withstand
 53kV DC – 15 minutes withstand
 11kV AC – Corona Extinction @ 3pC sensitivity
 200 Amp – Continuous
 10kA Sym – 10 Cycles Momentary

For 25kV Voltage Class:

15.2kV Max Phase-to-Ground – Operating Voltage
 26.3kV Max Phase-to-Phase
 125kV BIL – Impulse Withstand (1.2 x 50 microsecond wave)
 40kV AC – One minute withstand
 78kV DC – 15 minutes withstand
 19kV AC – Corona Extinction @ 3pC sensitivity
 200 Amp – Continuous
 10kA Sym – 10 Cycles Momentary

PROUDLY DISTRIBUTED BY

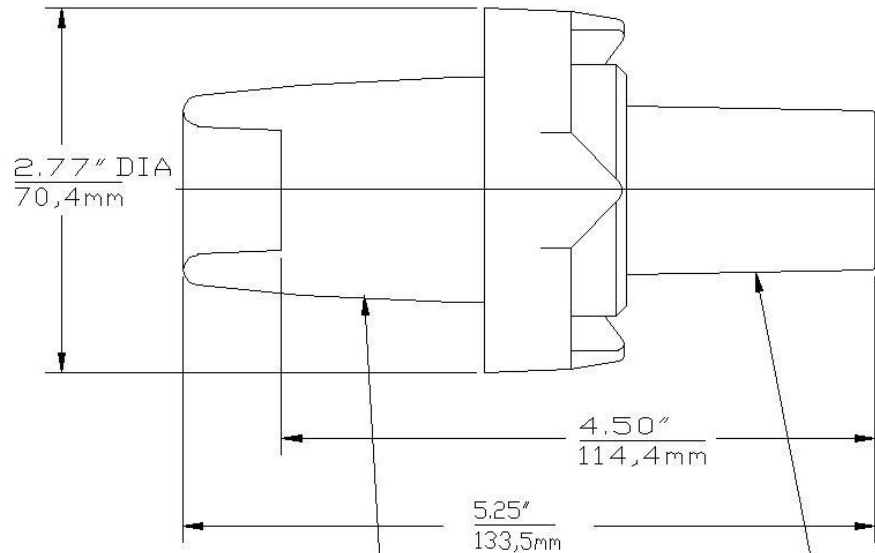


Web www.gvk.com.au
 Email sales@gvk.com.au
 Phone 03 9312 6633
 Fax 03 9312 6433

15/25kV

200A Deadbreak Bushing Insert

K1501A1



MATES WITH BUSHING WELLS
CONFORMING TO
ANSI Std. 386, Fig. 3

CONFORMS TO IEEE
STD 386, Fig 4

Ordering Instructions:

To order, specify number **K1501A1** bushing insert.

Each kit contains the following:

1	Bushing Insert	K1501A1
1	Protective shipping cap	180-PPC
1	Lubricant	82-08
1	Installation Instruction	IS-0213

Notes:

Bails are required but not included. Order separately.

PROUDLY DISTRIBUTED BY

 **GVKinsman**
ELECTRICAL DISTRIBUTOR PTY
LTD

Web www.gvk.com.au

Email sales@gvk.com.au

Phone 03 9312 6633

Fax 03 9312 6433