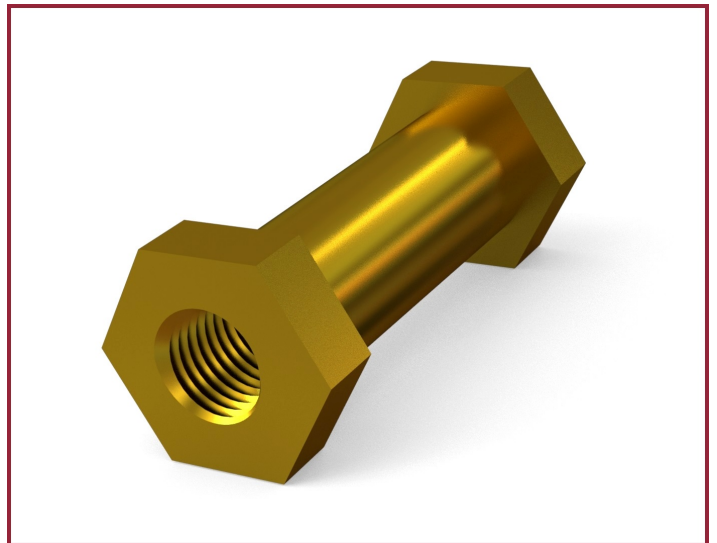


Brass Earth Stub

Earthing stubs are made from high purity brass, able to carry fault currents up to 40kA for 0.5 seconds or equivalent and suitable for connection of earthing devices onto structures.

- Material: Brass
- Hardware: Stainless Steel G304
- Length: 80mm
- Shaft Diameter: 22mm
- Hex head: 30mm AF



Ordering Information:

ESB-M16-1 - Earth Stub Brass with M16 thread

ESB-M12-1 - Earth Stub Brass with M12 thread