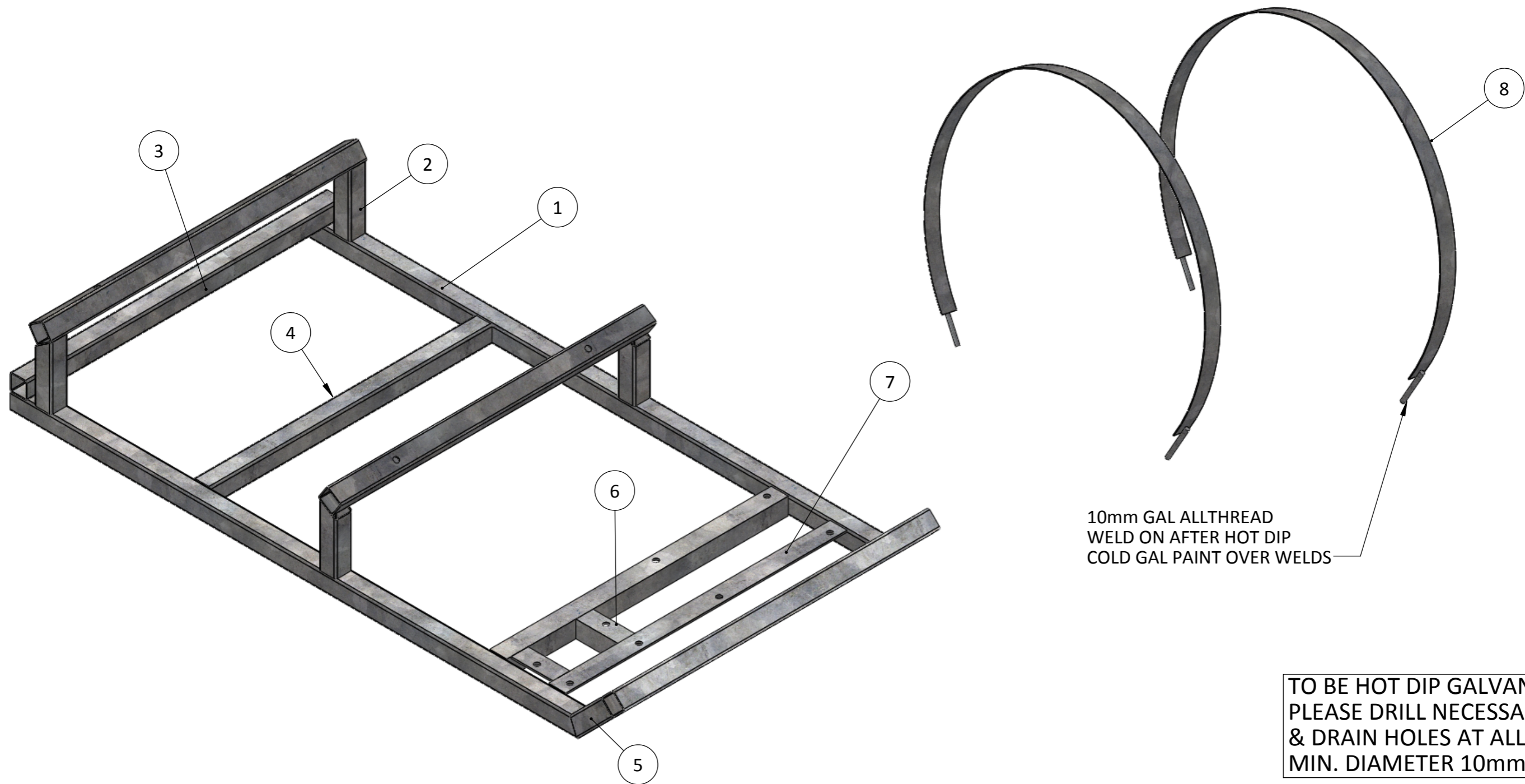


ITEM NO.	QTY.	DESCRIPTION	LENGTH
1	2	40 x 40 x 2.5 SHS	1329
2	4	40 x 40 x 2.5 SHS	146
3	4	40 x 40 x 2.5 SHS	740
4	2	40 x 40 x 2.5 SHS	660
5	2	40 x 40 x 2.5 SHS	120
6	2	40 x 40 x 5 ANGLE	98
7	2	40 x 40 x 5 ANGLE	660
8	2	40 x 3 FLAT	1715



TO BE HOT DIP GALVANISED.  
PLEASE DRILL NECESSARY VENT  
& DRAIN HOLES AT ALL JUNCTIONS.  
MIN. DIAMETER 10mm

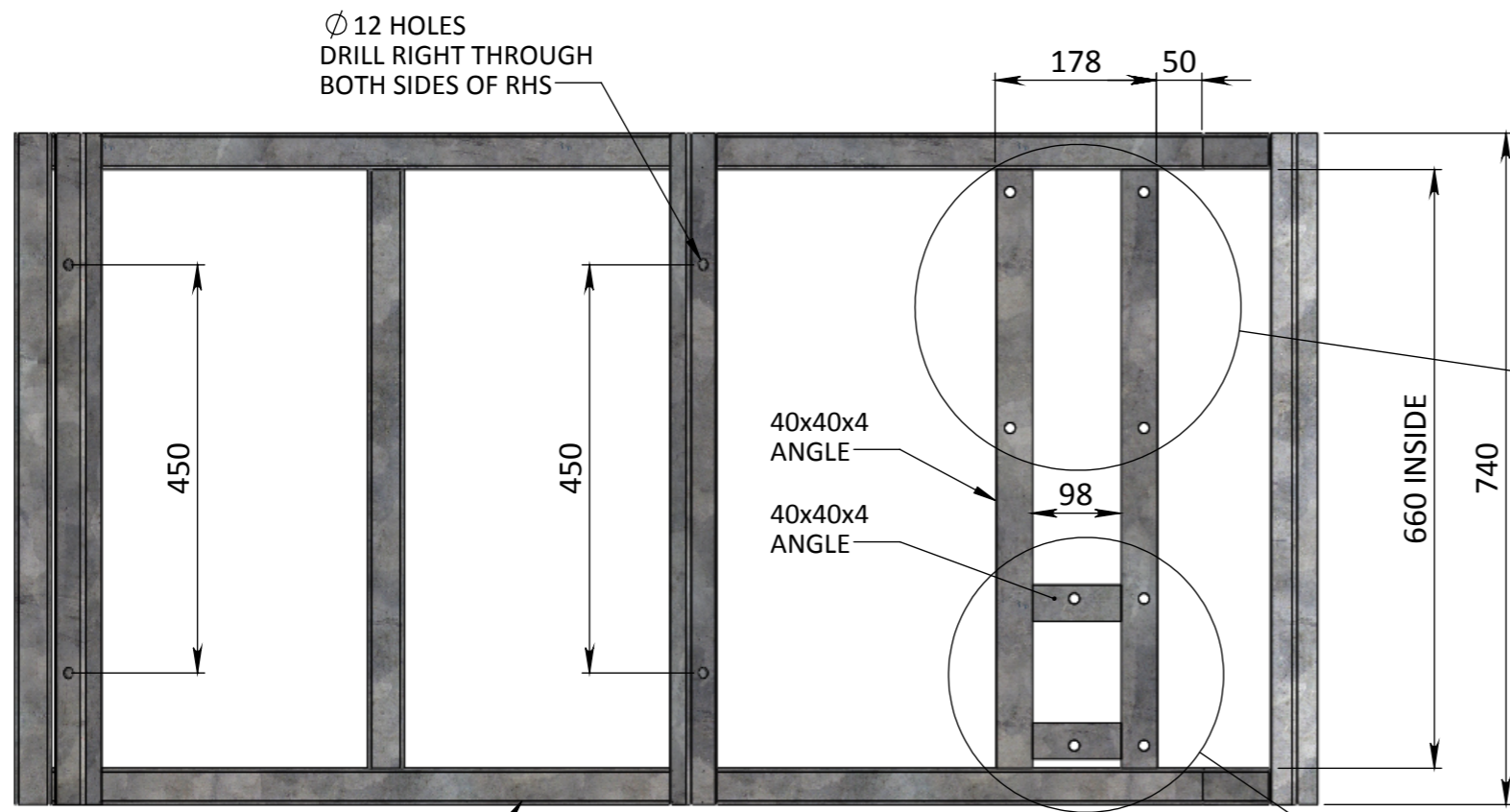
REV	DATE	BY	DESCRIPTION	GOUGH
				APPROV.
			REVISION	



A.C.N. 010 028 547  
Gough Industries Pty. Ltd.  
833 Ingham Road  
Bohle, Townsville  
P.O. Box 7570, Garbutt BC, Qld. 4814.  
Telephone 07 47747606  
Facsimile 07 47747608

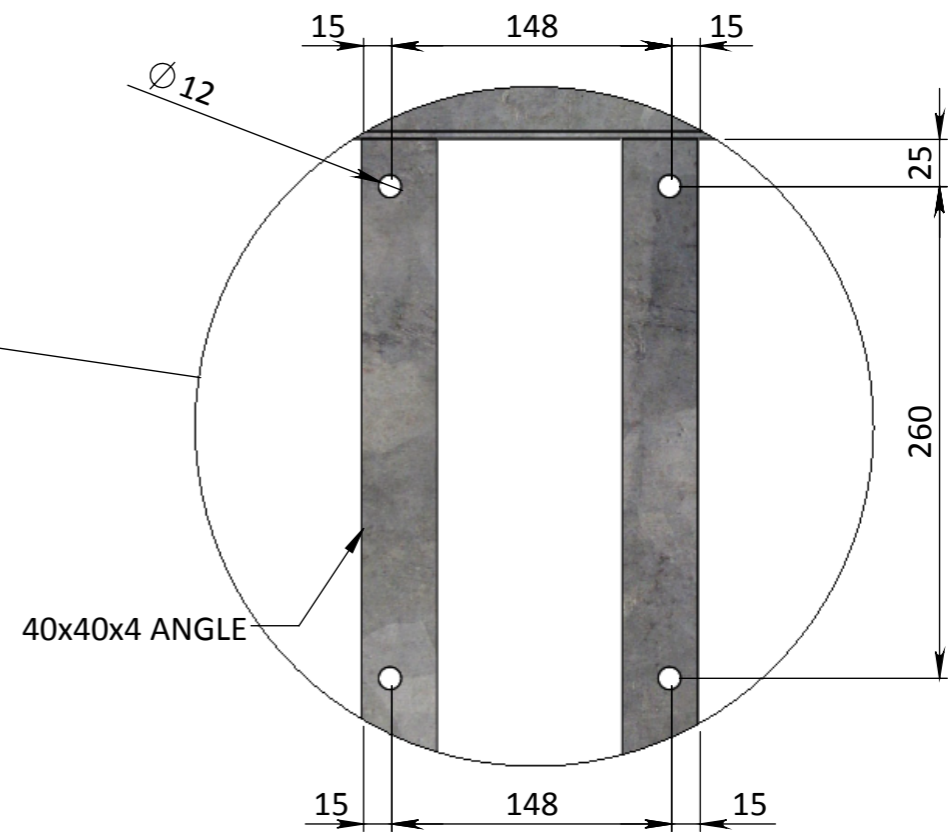
### 400L CARTAGE TANK\_PUMP SKID\_sheet 1 of 2

Signature	Date	SCALE	A3	Gough Plastics Drg. No.	A	REV
D.HOLLIER	13.06.16	1:20		FFAR500.4042		
DRN. CHK		S:\Products\Rural\Transporters\400LTransporter\Production Admin\Frames				

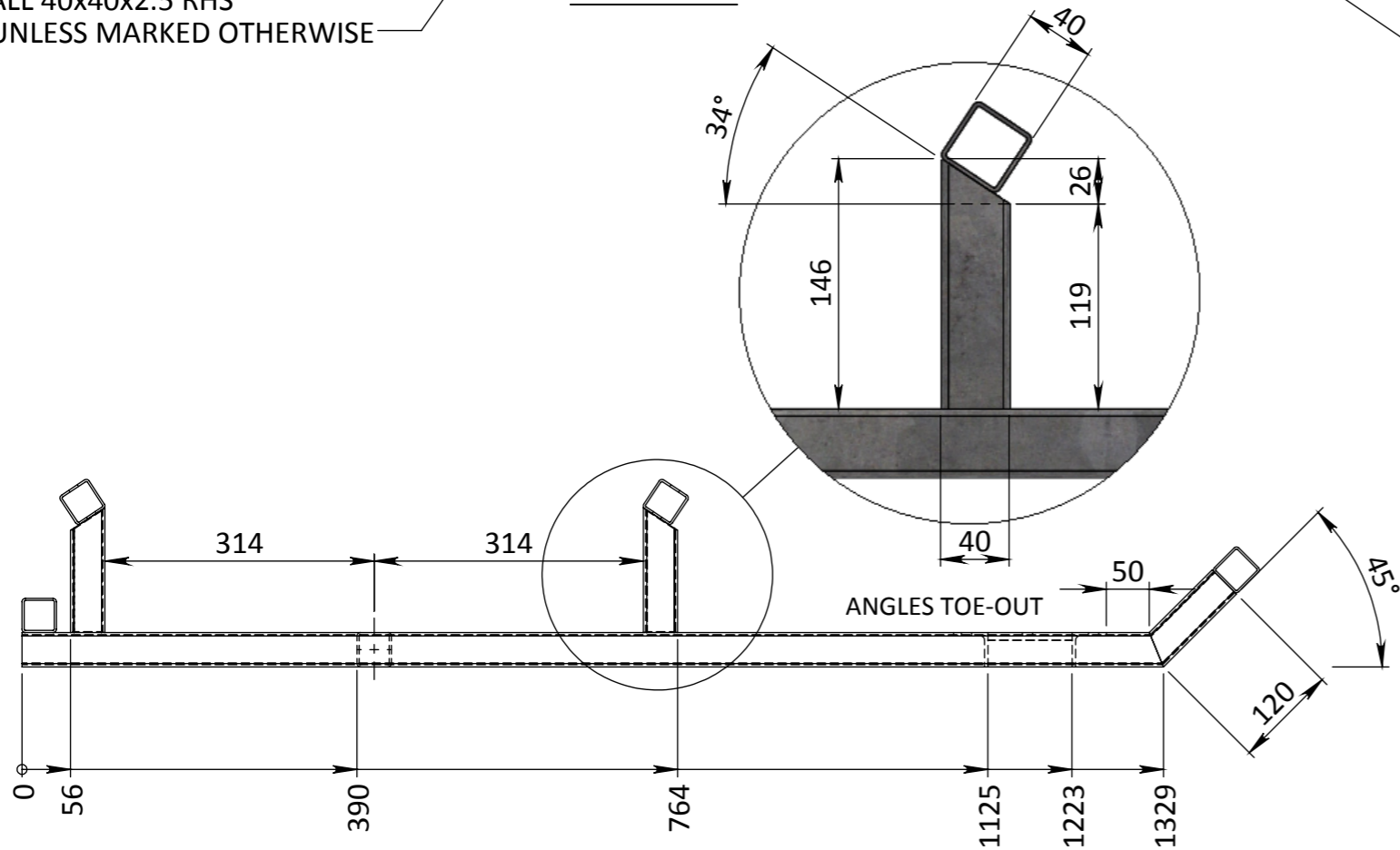


PLAN VIEW

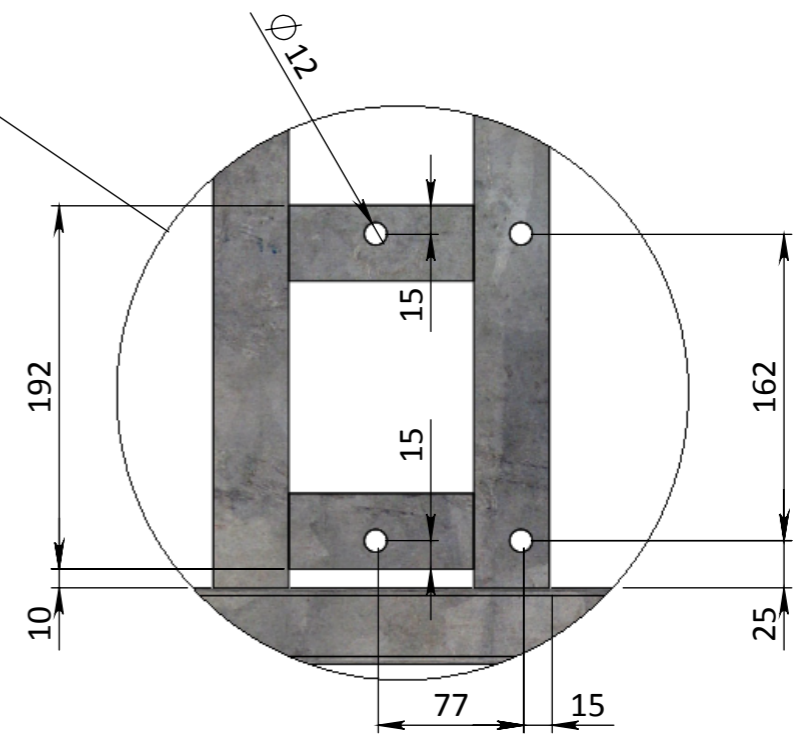
ALL 40x40x2.5 RHS  
UNLESS MARKED OTHERWISE



40x40x4 ANGLE



SIDE VIEW



REV	DATE	BY	DESCRIPTION	GOUGH
				APPROV.
			REVISION	



A.C.N. 010 028 547  
Gough Industries Pty. Ltd.  
833 Ingham Road  
Bohle, Townsville  
P.O. Box 7570, Garbutt BC, Qld. 4814.  
Telephone 07 47747606  
Facsimile 07 47747608

400L CARTAGE TANK\_PUMP SKID\_sheet 2 of 2

DRAWN	Signature D.HOLLIER	Date 13.04.16	SCALE	A3	Gough Plastics Drg. No. FFAR500.4042	A	REV
DRN. CHK			S:\Products\Rural\Transporters\400LTransporter\Production Admin\Frames				