

# ColorVu 3.0 Camera



# Making Pro, More Pro

ColorVu 3.0

- Pro for low illumination
- Pro for dynamic effect
- Pro for WDR

AcuSense 3.0

- Pro for event retrieval
- Pro for algorithm



Audio 2.0

- Pro for sound clarity
- Pro for two-way audio
- Pro for live guard



What's more...

- Pro for usability
- Pro for user-friendly
- Pro for eco-friendly

# ColorVu 3.0

**Ai**-Powered night vision  
hits new heights



Noise Reduction



Color Accuracy

# AcuSense 3.0

AcuSearch    Algorithm Upgrades

AI WDR



**CORROSION  
RESISTANT+**



F1.0



1/1.8 Sensor

**ECO  
FRIENDLY**



Image Calibration

EIS

Rotation Mode



# Audio 2.0

Built-in Arrayed  
Dual-Mic

# Smart PA Speaker



Live Guard

# Two-way Audio

# ColorVu 3.0

 - **Powered night vision**  
hits new heights



# ColorVu 2.0 Technology

---

## Cutting-edge Hardware

- **F1.0 super large aperture**
- **Advanced sensor**

## State-of-the-art Image Processing

- **Pioneering ISP technology** realizes precise color rendition to reveal accurate colorful image.
- **WDR**



## Super-high Reliability

- **Active alignment technology** guarantees the focusing performance



# ColorVu 3.0 Technology

## Cutting-edge Hardware

- F1.0 super large aperture
- Advanced sensor

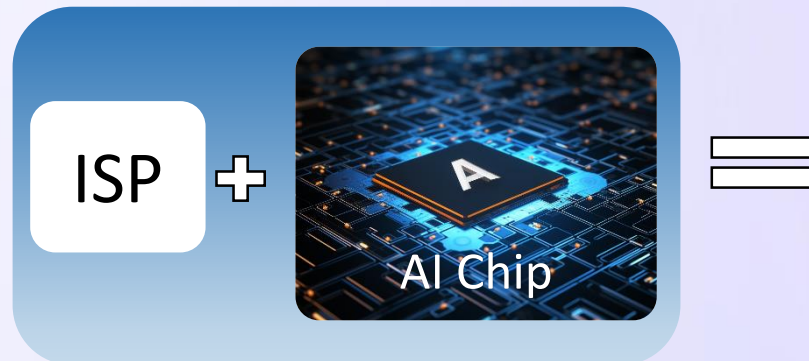


## Super-high Reliability

- **Active alignment technology** guarantees the focusing performance

Self-developed

**HIK AI-ISP**



Noise Reduction



Color Accuracy



Image Clarity



More Detailed

# Did you suffer from?



**Poor Brightening**



**Motion Blur**



**Ineffective WDR**

# Brightness Enhancement





**Phone illumination**  
**\*Taken at 1:00 a.m.**



**ColorVu 2.0**

**\* Without supplemental light**





Greatly enhance the brightness to  
**get more details**

**ColorVu 3.0**  
**\* Without supplemental light**

# Motion Blur Reduction



# Motion Blur Reduction



**ColorVu 2.0**

**\* Without supplemental light**



# Motion Blur Reduction



**Effectively reduce the motion blur issues at night**

AI WDR

# Better WDR Effect



WDR OFF



ColorVu 2.0  
WDR On



ColorVu 3.0  
WDR On

- Brilliant image in full frame
- Clear targets at boundary between light and shade



# Auto WDR

Auto On 



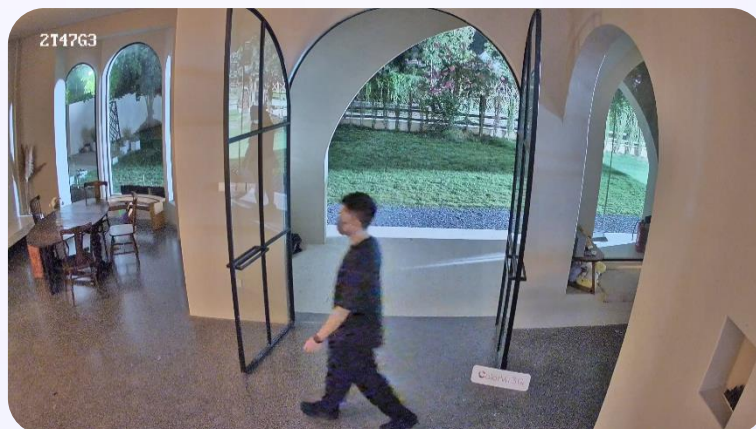
\* Daytime WDR off



\* Daytime WDR on

- Both Day & Night Scenario get good performance

Auto OFF 



\* Night time WDR on



\* Night time WDR off

- Intelligent Scenario Adaptive to auto on/off WDR



# 3D LUT color correction



**Providing more vivid & truer color**



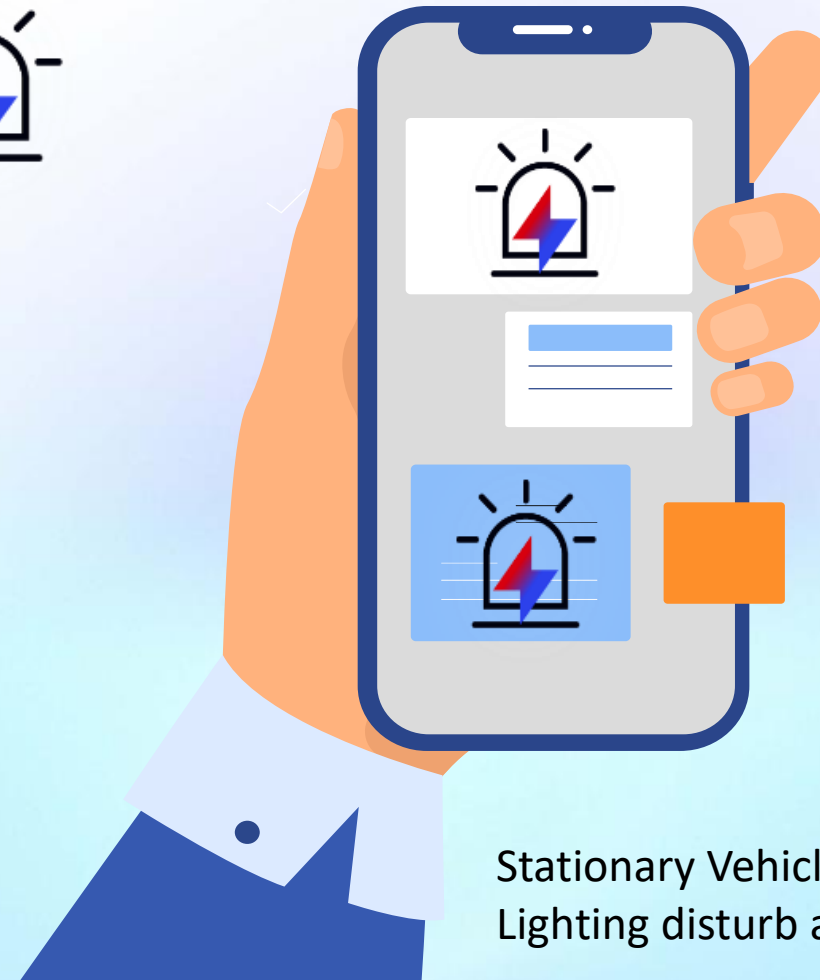




AcuSense 3.0

**Intelligence better  
fits scenarios**

# Painpoint



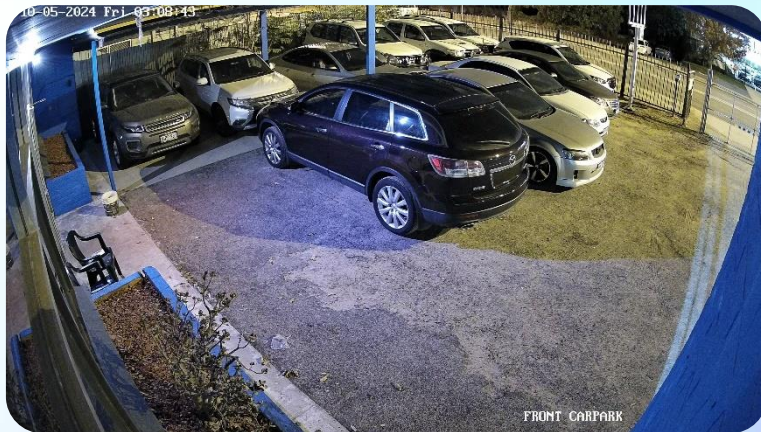
Stationary Vehicle False alarm by  
Lighting disturb a lot



# Continuously optimized algorithms



⋮

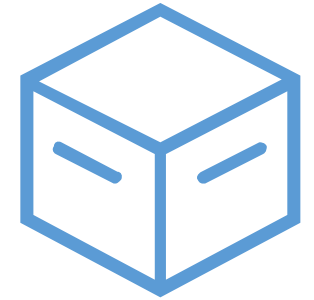


False alarm database



Training

Optimized Algorithm



# Algorithm Upgrades



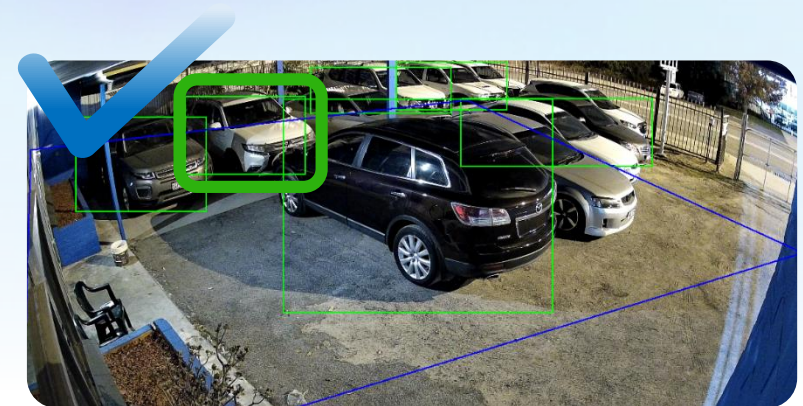
## Stationary Vehicle

False alarm by

**lighting**

90% OFF

After Upgrading

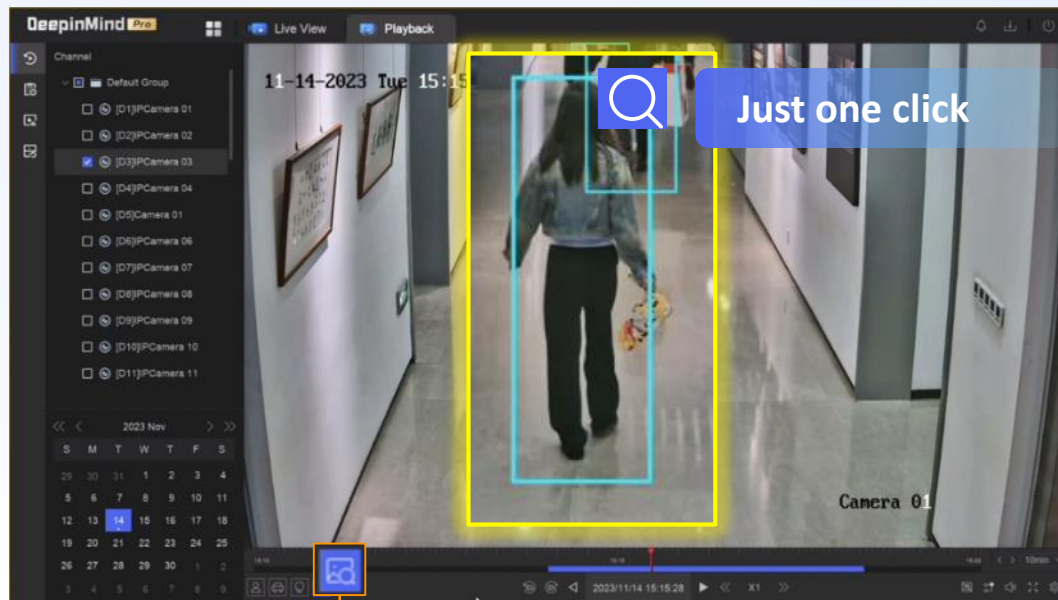




# AcuSearch

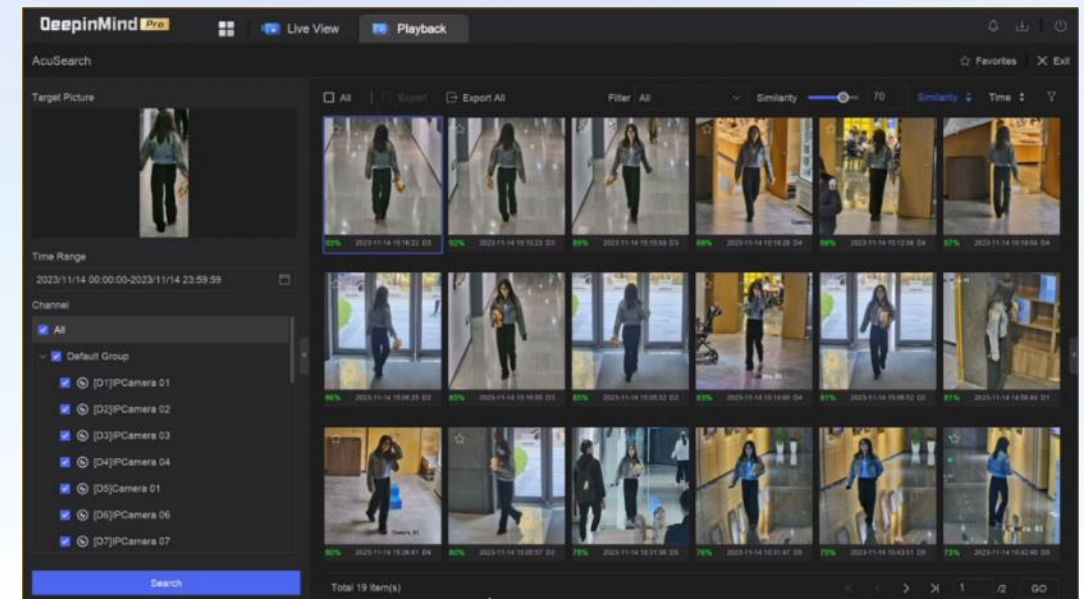
Just one click to focus on the specific target of interested precisely, and then related videos will be displayed

Select an interested Person target



AcuSearch

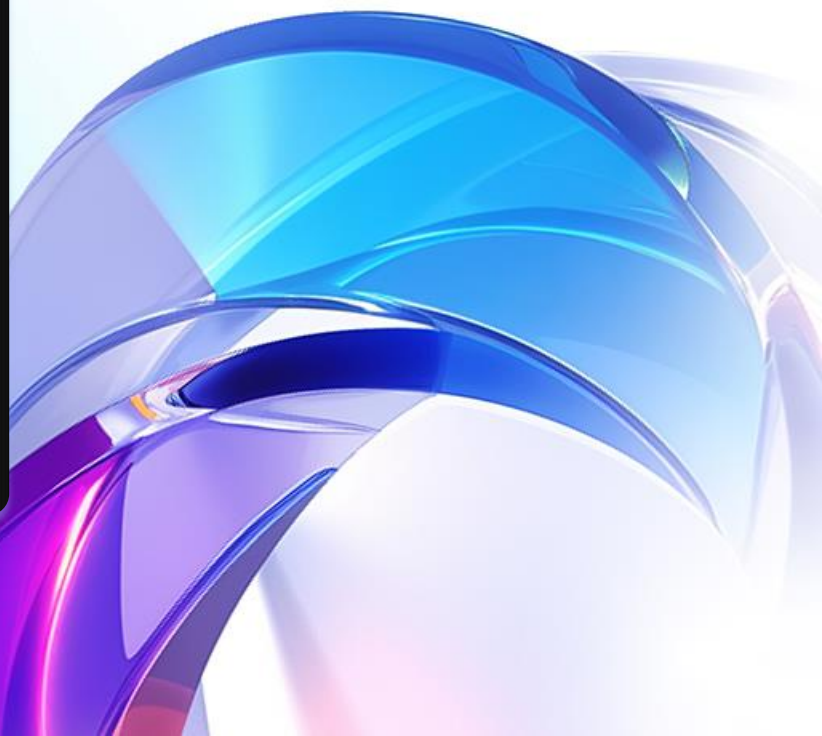
Find out all the related recordings







AcuSearch



# Supported Model

AcuSense 3.0



## IPC

Series	Firmware Version
2xx6G2 (G5 Platform)	V5.7.17
2xx7G2H (G5 Platform)	V5.7.17
2xx7G3 (H13 Platform)	V5.8.2

## NVR

Series	Firmware Version	Releasing Time
DeepinMind M series	V5.02	released



Audio 2.0

**Crystal-Clear audio**  
with intelligence

# Pain points

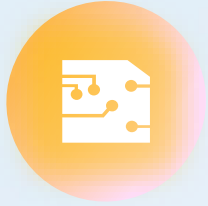


- **Complex scenarios** will affect the performance of voice pickup
- Speaker has limitation in **sound reinforcement**



- **Two-way audio effect** is limited by microphone and speaker performance





Smart PA Algorithm



Clear and  
louder voice

Two-way Audio

Live Guard

# Smart PA Speaker



Double Distance  
as Single Mic

Built-in Arrayed  
**Dual-Mic** 



Clear and loud  
person voice



Person Voice

Ambient Noise

# Arrayed Dual-Mic



Single mic (10m)



Arrayed Dual-mic (10m)

# Why Audio 2.0 Cameras

## Audio 2.0 Camera



- Better **Noise Reduction** Effect
- **Longer** Voice pickup distance
- **Louder** Voice output

## Normal camera



- Ambient noise
- Short Voice pickup distance
- Weak voice input

What's more?



# Anti-corrosion Protection

(NEMA 4X)

**CORROSION  
RESISTANT+**



- Increase the product lifetime
- Avoid the risk of appearance & function problem caused by corrosion

\* the camera supports to be used in seaside towns and areas that are not prone to splashing water.

## EIS



- Image Stabilization Technology
- Image Vibrations can be effectively controlled
- Effectively reduces picture instability

## Image Calibration



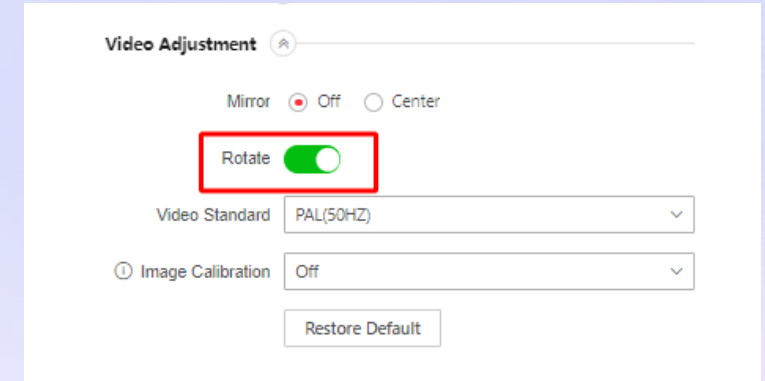
Greatly improve Image Distortion



After Adjustment



## Rotate Mode



- Rotate(Corridor) mode and Smart events are mutually compatible now.
- It is easier to have access to Rotate Mode.



# Eco-Friendly Package Design

## Conventional packaging

EPE foam for interior cushioning



## Eco-friendly packaging

Folded cardboards for interior cushioning



Folded Cardboard



Biodegradable PLA material or  
Paper for accessory packs





# Tamper-Free Packaging



Installer can pre-configure the camera **without opening the packaging.**

# ColorVu 3.0

**Ai**-Powered night vision  
hits new heights



Noise Reduction



Color Accuracy

# AcuSense 3.0

AcuSearch

Algorithm Upgrades

AI WDR



**CORROSION  
RESISTANT+**

F1.0



1/1.8 Sensor



Image Calibration

EIS

Rotation Mode



# Audio 2.0

Built-in Arrayed  
Dual-Mic

# Smart PA Speaker



Live Guard

# Two-way Audio



# Product Showcase

DS-2CD23**6**7G3-LIS2UY/SL  
DS-2CD23**8**7G3-LIS2UY/SL



DS-2CD21**6**7G3-LI2UY  
DS-2CD21**8**7G3-LI2UY



DS-2CD20**6**7G3-LI2UY/SL  
DS-2CD20**8**7G3-LI2UY/SL



DS-2CD2T**6**7G3-LIS2UY/SL  
DS-2CD2T**8**7G3-LIS2UY/SL



ColorVu 3.0

Audio 2.0

AcuSense 3.0